

THE NEW WOODEND STAR

Circulation of 3500 throughout

Woodend postal district, Newham, Hesket, Ashbourne,
North Woodend, Hanging Rock, Carlsruhe, Cobaw.



AN INITIATIVE OF THE ROTARY CLUB OF WOODEND

February 2014

A Monthly Community Periodical

First Published 1997

Volume Eighteen No 1

Make a Pledge at the Sustainable Living Festival

This year the Macedon Ranges Sustainable Living Festival is asking attendees to make a pledge about something from the festival that has inspired them. It might be to stop using plastic bags or bottles, or putting up solar panels on their home, or having a monthly massage, or eating less meat, or buying local. The Festival gives many ideas on how you can approach sustainability in a holistic and practical way.



“Each year in February for the last five years many people volunteer their time and effort in getting the festival off the ground. That is why it is such a great festivals” says Alastair Fleming, event organiser and added, “There were over 1,000 people who attended the festival last year and we want more to attend this time. There are lots of speakers, entertainment, music and food. A great day out for the family...and there are lots of ideas on how you can modify and improve your life.”

The Permaculture Garden is a popular feature and there will be a number of workshops focusing on what you can do in your garden to be more sustainable - from native bees, to medicinal plants and Water Wise solutions. There will be two garden tours by Fleur Tysoe, a local permaculture enthusiast. “Permaculture (permanent agriculture) is the conscious design and maintenance of agriculturally productive ecosystems which have the diversity, stability, and resilience of natural ecosystems.” Definition by its founder Bill Mollison.

continued on page 2

Rotary to officially Launch Exercise Track

The Rotary Club of Woodend will officially open its community exercise track after construction was recently completed.

Macedon Ranges Shire Mayor Roger Jukes and councillors will formally launch the track on February 6 at 3pm after four years of planning and development

Planned for completion in two stages, the track now runs from the Buffalo Stadium through to Jeffrey Street and the Five Mile Bridge.

Construction of the second stage included grading and gravel work along with grass clearing and signage.

The idea for an exercise track was first raised in 2010 for the enjoyment and health of the Woodend community, since then the project committee, local businesses and community members have made the idea a reality and raised significant funds and donations.

Families, joggers and dog walkers have already taken advantage of the track which passes rare protected native grasslands and local forest.

The track also features a number of exercise stations which are already a favourite of fitness groups and early morning exercisers.

The official opening will be held at the track entrance near Buffalo Stadium at 3pm Thursday 6th February, all community members are welcome.

Submitted by Brendan Watters. Project Co ordinator



Pictures courtesy B Watters

The New Woodend Star website has been re-launched:

www.newwoodendstar.org.au

Check it out -you'll find current and back issues available to download, as well as all the information on submitting an article, booking advertising space or paying your account.

Share our website with your friends and family, former residents or those considering moving here, it is a great way to connect with the community.

The New Woodend Star

An initiative of the Rotary Club of Woodend Inc.
The Bank, 75 High Street, Woodend, Vic. 3442
ABN 32 685 225 161 No. A0021518E

Disclaimer: Articles and comments published in this newspaper are the result of contributions from local groups and relevant news articles pertinent to the Woodend district. Neither the Rotary Club of Woodend Inc., The New Woodend Star nor the editorial team are liable for any mistakes, omissions, or misprints. It prints and makes no representation as to the truth or accuracy of any description, and accepts no liability for any loss suffered by any person who relies on any statement contained herein. Persons or organisations submitting material for publication in the New Woodend Star do so on the condition that the New Woodend Star has the right to reproduce this material in electronic format, which the public may access on the New Woodend Star web page. The opinions expressed are not necessarily those of the editorial team. The committee reserves the right to omit, reject, cut, alter or otherwise re-work submitted articles to make them suitable.

Committee: Barry Naphine, Ivor Johnson, Claudia Green, Brendan Watters, Alexia Downie, Sue Macklin & Jane Watters

Layout & printing by Collier Office & Business Assist

Information for Advertisers

Prices for advertising 2014 only. Rates are not subject to GST.

Size	Dimensions height x width	Cost
Business card	(55mm x 90mm)	\$56
Trade page	(40mm x 60mm)	\$40
Quarter page	(134mm x 90mm)	\$112
Half page	(277mm x 90mm) verticle	\$210
Half page	(134mm x 190mm) horizontal	\$210
Full page	(277mm x 190mm)	\$350
Insert	(of your printed brochure)	\$260

Advertisers: please note - it is in your interest to book and pay for a year in advance, as a 10% discount applies to any full year pre-paid booking. Any existing pre-paid ads will revert to the new rate on completion of the pre-paid period.

Booking form and back issues available from The New Wooded Star website, go to: www.newwoodendstar.org.au. Please send completed forms to Alexia Downie via sales@collieroffice.com.au or fax to 5427 3209, call 5427 3092 for advertising & content. Accounts queries can be made to Sue via nws@johnsonwoodend.com.au or on 5427 4089. Mail should be directed to: New Woodend Star, C/- The Bank, 75 High Street, Woodend 3442.

All bookings, artwork & content must be received by the 15th of the month prior to publication.

The New Woodend Star 2014 publication dates

February	February 3	July	June 30
March	March 3	August	July 28
April	March 31	September	September 1
May	May 5	October	September 29
June	June 2	November	October 27
	December	December 1	

Changes to advertisements, new advertisements or cancellations must all be made by email or in writing. All advertisements will be placed and charged for until notified otherwise.

Circulation: 3500 copies throughout Woodend & district

Subscribe to the New Woodend Star

Do you live outside the New Woodend Star distribution area? Be sure to receive your copy every month by subscribing. A yearly subscription of 11 issues is just \$36.00 Post to New Woodend Star, C/- The Bank, 75 High Street, Woodend 3442.

Name: _____

Address: _____

Phone: _____ Enclosed: Cheque/Money Order for

Make a Pledge at the Sustainable Living Festival

The MRSG permaculture garden involves keeping hens, fruit trees, a vegetable garden and pond with 3 compost heaps and a group of people who take great care in its upkeep. The three Permaculture principles are: Earth care, Fair share, People care.

The keynote speaker Julian Burnside, QC, human rights advocate and eminent lawyer will speak on, "Is the Aussie Myth Sustainable?". There are many other speakers on diverse topics such as straw bale building, solar hot water and understanding and taking control of your energy bill. A talking post is another new item which will enable anyone to have a yarn.

Alastair says, "This will be the second year that Woodend businesses have agreed to be a part of the Sustainability Trail. They will reveal the changes they have made to be more sustainable. The Sustainability Trail map can be picked up at the festival."

He also acknowledges the generous support for the festival by many individuals and organisations, including sponsorship by the Bendigo Bank, Lisa Chesters MP and Joanne Duncan MP.

Delicious vegetarian food is provided by MR VEG group. There is a special activity program for the children. Over 50 stalls from businesses, individuals and community groups giving as much information as possible. There will be a great line-up of local, live musicians including Brothers Johnstone.

Macedon Ranges Sustainable Living Festival is on February 8, 2014, 10am to 4pm, in the garden at the rear of the Woodend Neighbourhood Centre, 47 Forest St, Woodend. For more information contact Alastair 0412 178 408 or go to www.mrsgonline.org.au

Submitted by Alastair Fleming



Top Hat Productions



- * 8 mm / 16 mm Film to DVD
- * VHS/Mini DV/ Hi 8 to DVD
- * Filming/Editing Services
- * Corporate & Special Events Productions

AVPA Multi -Award Winners
Accredited Producers

PH: 03 5422 3930

Would your bank tell you if a competitor had a better home loan?

Sion Orritt will.

Call Sion Orritt
your local Aussie Broker
0498 498 898
sion.orratt@aussie.com.au

It's Smart to Ask





Music to make the Relay swing

Australian Country Music songstress Donna Fisk will headline the live entertainment at next month's Lancefield/

Macedon Ranges Relay For Life. The popular singer, whose accolades include five Southern Hemisphere country music awards and top hits on country music charts, will perform with her father Gene at Lancefield Park on Saturday, March 1.

The effervescent Marcie Jones will also strut her sassy style on stage. Marcie is an energetic performer who often lends her talent to charity events in her home town of Kyneton. She made her name with 'Marcie and the Cookies', the top female singing group in Australia during the sixties.

Lancefield's Harry Nanos, an established musician and familiar participant at the annual event, has been busy booking an impressive mix of acts to help motivate teams at the overnight fundraiser. Harry's band is also sure to help walkers step up their laps.

Rising blues & roots musician Jarrod Shaw will be welcomed back by those who were won over by his unique voice and guitar technique last year. Actor Annie Phelan will again show her versatility with songs both lively and soul stirring.

Event chairmanager Ken Wiltshire says the "special showcase of entertainment" will start at 6pm and run until the Candlelight ceremony at 8pm.

"They are all immensely talented artists and they are certain to put on a good show. In addition there will be a host of other performers at other times during the course of the Relay including the Gisborne Singers."

Now in its 12th year, the Lancefield/Macedon Ranges Relay For Life has raised more than \$1 million for the Cancer Council Victoria.

Committee members encourage anyone wishing to volunteer to help over the Relay weekend to contact Kathy at jakalake57@gmail.com. Team and individual registrations can be made online at www.relayforlife.org.au or call 1300 65 65 85.

A Team Captains meeting will be held on Wednesday, February 19 at 7.30pm in the Laurie Green Room at Lancefield Park. This meeting is a great way to get all the important information before the big weekend. Team sites will be allocated and any questions answered.

Submitted by Nadine Hartnett

Exciting new book released.

"Time Gentleman Please!" – a history of the over fifty hotels which have operated in the district over the years, is no boring text book history. The author Jannyse Williams, has caught the real spirit of the times and produced a very readable and interesting book which we can all enjoy.

Another major feature of this new publication is the superb drawings by extremely talented illustrator, Joycelyn Moreland. The result is a beautifully produced and illustrated work that is entertaining and imaginative while providing accurate historical information by way of additional appendices.

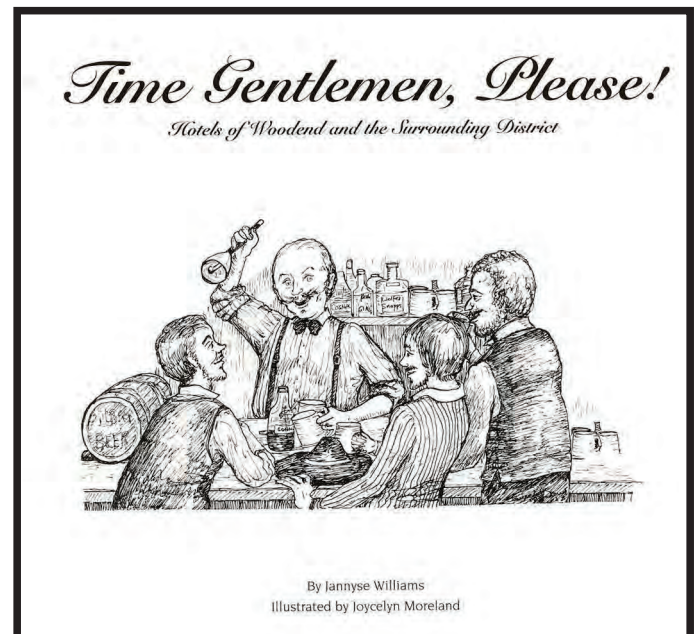
Copies of "Time Gentleman Please!" are on display at Collier Office and Business Assist and the Local History Centre at the Court House in Forest Street (Wednesdays 9 – 5 pm) where it can be purchased for \$39.70. This new publication by the Woodend & District Heritage Society is a must read!

0402 228 286

**Pacifique Vue
Vanuatu**

Luxury Accommodation
www.pacifiquevue.com
Ocean front + FREE rental car

Woodend Rainfall Report 2013						
Each month we add the rainfall details and the year to date total. Our rainfall report shows 2008, 2009, 2010, 2011, 2012 and 2013 comparisons. Please note that your own rainfall readings may not exactly match these.						
	2008	2009	2010	2011	2012	2013
January	17.1	0.08	54.0	227.5	31.0	3.9
February	22.1	2.5	71.5	115.0	133.0	97.4
March	25.4	42.5	121.0	35.0	84.0	53.0
April	20.4	51.0	45.0	63.5	35.5	20.5
May	43.7	30.5	39.0	73.5	54.4	47.2
June	88.7	66.5	98.5	69.0	126.8	147.8
July	112.5	76.5	87.5	82.5	102.0	101.8
August	52.2	107.5	148.5	56.0	113.7	116.4
September	42.0	88.5	97.0	98.5	54.6	85.0
October	13.0	46.0	154.5	86.0	39.0	75.6
November	67.2	99.0	193.0	82.0	31.4	67.2
December	96.0	60.0	93.0	120.0	21.4	35.2
YTD:	600.3	670.5	1202.5	1108.5	826.8	851mm
For year end 2013 there was rainfall of 851 mm						
1 inch = 25.4 mm therefore the total year to date is 33.5 inches						



Submitted by Janet Hawkins

Woodend Connections Volunteer Network

Coming up in February

Workshop & Planning Session: "Planning a Community Event" Wednesday 26th February, 12.30pm – 3.30pm at Woodend Neighborhood House, presented by the Bendigo Volunteer Resource Centre. Come along to this workshop and get tips on running successful events for your group or club, then join us as we plan a memorable community fundraiser that will benefit Woodend's fantastic volunteers! Bookings essential!!

Call Woodend Neighbourhood House 5427 1845 or email reception@woodendnh.org.au.

Free Training for Volunteers

Woodend Connections will be offering training in Responsible Volunteering through the Woodend Neighbourhood House. This training is aimed at all individuals who would like to volunteer or are currently volunteering. With this program, you will be able to pass on skills to other volunteers in your community groups & clubs. The training will cover: Basic administrative skills, Communication with Clients, Members and Public, Working with others, National Standards in Volunteering and also using the Internet for networking: Setting up Facebook, Twitter & Google+ accounts.

Sign up by contacting the Neighbourhood House: c/reception@woodendnh.org.au, phone 5427 1845

Join Our Team

Woodend Connections Volunteer Network is compiling a database of all community organisations and clubs in our town. For the network to link all groups together, it is important that we have your current details, so please contact us to make sure you are in our database correctly. A Working Group of independent community members manages the network. If you would like to join the Working Group, we meet on the second Tuesday of the month at the Woodend Neighbourhood House and welcome all newcomers.

How can we help you?

We would like to hear from you about the kind of networking activities that would be useful for your group or club. What would help your volunteers? What resources do you wish you could access locally? What kind of volunteer work are you interested in?

Woodend Connections is supported by Bendigo Volunteer Resource Centre and Macedon Ranges Shire Council.

For more information about the network or to book into the workshop & training sessions please contact Janet Pearce or Lisa Richards c/reception@woodendnh.org.au

Call 5427 1845 or find us on Facebook: www.facebook.com/WoodendConnections.

Submitted by Lisa Richards

View back issues @
www.newwoodendstar.org.au



Stocking the largest range of inks & toners in the Macedon Ranges



Bring in your used inks and toners for recycling with Planet Ark. Prevent your waste from going to landfill.

Choose from any writing instrument: pens, markers, chalk, pencils, crayons, refills, or highlighters.

Buy any 4 only pay for 3!



High Quality Printing

We can help you with all your professional or personal printing needs: from Business Cards, Booklets, Flyers and Brochures, to Greeting Cards or Invitations, Posters & much more.

- Speedy turn around
- Impressive quality
- Flexible paper options
- High volume discount



CATERING FOR ALL YOUR BUSINESS NEEDS

Printing
Office products
Administrative services

P 5427 3092 E print@collieroffice.com.au
A Shop 5, 130 High Street Woodend

Help keep our CFA volunteers cool!

Did you spend much time outside during the last heatwave?
Now imagine if you had just spent 6 hours standing on a fire ground.

Well that's how it is for the Woodend Volunteer Fire Fighters except when they go back to the station to wait for the next call out on a Total Fire Ban day dressed in their heavy overalls there is no air conditioning to help them cool off. We want to rectify this situation by raising funds so we can install an air conditioning unit in their station and let our volunteers know how much we appreciate all they do for our community on weeks like this.

Donations can be made via credit card, cash or cheque at the Woodend Wine Store.

Submitted by Caroline Bailey

NOW OPEN



il Caffé
Woodend

Open from 6am
Tuesday - Saturday

Coffee	Cold Drinks
Gelati	Pastries & Pies
Quiches	Cakes & Biscuit
Muffins	Foccacias
Antipasto	All made fresh

5427 4336 | 66 High Street Cnr Brooke Street

ENJOY YOUR PRECIOUS WEEKENDS

TERRY'S GROUND CREW



0400 909 303

National Trust Invites Woodend to help honour iconic Avenue

The National Trust of Australia (Victoria), in partnership with the Woodend RSL and Woodend & District Heritage Society, invites the people of Woodend and surrounding communities to commemorate Woodend's iconic Avenue of Honour.

In the lead-up to the centenary of World War I, the National Trust has been conducting a campaign to raise awareness of avenues across the state that were planted to commemorate the sacrifice of local volunteers. Once numbering more than 335 across Victoria, less than 50 Avenues of Honour are actively cared for and appreciated today.



Woodend Avenue of Honour Official Opening, 14 September 1918. Courtesy of Woodend & District Heritage Society.

Following successful campaigns in Bacchus Marsh and Sandringham, the Trust has selected Woodend for the last of three pilot projects, to explore the sacrifices made by volunteers from Victoria's small communities. The Woodend RSL will host an information hub on ANZAC Day, where original copper plaques from the avenue and other information will be on display.

Woodend RSL Member, Peter Whitelaw, says "We are privileged to have a wonderful Avenue of Honour of some 224 oak trees that were planted from 1918 onwards to recognise the men and women from the shire who served in WWI. We are planning to commemorate the Centenary of ANZAC with several events, including this information display, by involving community organisations and particularly the school children of Woodend and nearby towns."

The National Trust is inviting schools and other groups to participate in the project, and welcomes information about the avenue from the community. For further information, contact Felicity Watson on 9656 9818 or at felicity.watson@natstrust.com.au.

Submitted by Felicity Watson, Community Advocate, National Trust of Australia (Victoria)



Plant Nursery
Function Hire
Talks & Tours
Exhibitions
Events

www.budacastlemaine.org

Tel: 03) 5472-1032

Woodend Art Group

(WAG)

Find us at the Woodend Railway Station building. We are very fortunate to lease the old refreshment rooms there and have two large studios as well as a kitchen.

WAG has been running for over 30 years and we have over 80 members. We offer weekly classes, weekend workshops and life drawing and portrait painting groups.

We have two major exhibitions a year in our studios and have recently had a very successful exhibition at the Chamber cafe in Woodend. The work of WAG members can also be seen in other cafes in Woodend in the Art Walk. You can check out more information on the Woodend Art Group website.

Some information on the Term 1 classes is shown opposite and here are the details of the excellent weekend workshops coming up.

WAG Workshops With Helen Cottle

- For intermediate level painters who are in need of some new ideas, hints and tips. These workshops will offer a fun and relaxed atmosphere in which to discover and learn. Watercolour, Simple And Fresh on Saturday 15 February, 10am – 3pm. & Acrylic Impressions on Sunday 16 February from 10am – 3pm. The cost for either workshop is \$75 for WAG members, \$85 for non members.
- Etching Workshop using Ferric Chloride with Tim Jones on Sunday 23 February and Sunday 2 March from 10am – 4pm. This workshop is aimed at giving participants a well grounded understanding of the etching process, along with the necessary OHS knowledge to safely produce an etching. The total cost for the two days is \$150 for WAG members and \$170 non-members plus \$30 for materials. To reserve a place please contact Pamela Simmons on 5427 1659 or email her at colin.simmons@bigpond.com
- Printing Workshop with Lorna Ryan Burden and Vicki Harman on Saturday 22 March, 10.00am – 4pm. We will be using a UV light box and in the workshop we will use two plates: Plate 1: Photo based image or drawing on transparency, whichever method you prefer. Plate 2: working with found objects. Cost: \$90 for WAG members and \$100 non-members. All materials will be included in this cost. (2 solar plates provided). If you wish to purchase an extra plate they will be available for sale. Bring your own lunch, an apron and a pair of rubber gloves – blue nitrile are the best.

Bookings: Direct with Lorna Ryan Burden on greyfriars22@gmail.com or 0421034545

Submitted by Pamela Simmons for Woodend Art Group



Woodend Art Group Term 1 Classes

Wednesdays

10 – 12.30pm

Sculpture – clay modelling
with Pauline Morrison-Jack

5 February \$200 for 8
weeks

All materials provided

7 – 9.30pm

General Drawing with Tim
Jones

5 February \$230 for 8
weeks

Fridays

10am – 1pm

Printmaking with Marysia
Jarosinska

7 February \$160 for 8
weeks

Plus \$20 for materials

1 – 3pm

Acrylic Painting with
Pauline Morrison-Jack

7 February \$150 for 8
weeks

Folio Club for ages 7-14 yrs

Monday – Thursday 4 - 6pm with Jennifer Barnett

Commences week beginning Monday 10 February

\$140 or \$160 (for 7 or 8 weeks, depending on fall of public holiday) plus materials fee

For more information or to reserve a place please contact

**Pamela Simmons on 5427 1659 or email
colin.simmons@bigpond.com**

Please note that the term fees are for members of Woodend Art Group.
Non-members pay an additional \$10 per term.

ZIPTRAK Panel Blinds

@ **Bradley's**
Curtains+Blinds

t 5427 2361 fx 5427 1019
72 High Street, Woodend VIC 3442



Protect your entertaining area all year around by enclosing it with the mesh or PVC panel blinds.

Specially designed slotted side tracks allow the blind to glide smoothly and easily and to stop at whatever location you require.

Versatility of spring, crank or motor operation.



WOODEND & DISTRICT PODIATRY

John F. Shapland
Resident Practitioner

Reg. Department Veteran's Affairs

5427 2064
Business and After Hours

1895 Mt. Macedon Rd., Woodend

What's on at Woodend Library

Adult programs

Woodend Library is once again thrilled to partner with ABC Open's 500 Words project to present free writing workshops. Workshops will be held in the library on the first Tuesday of the month from 1-3pm, beginning Tuesday 4 February.

500 words is a monthly writing challenge that invites regional Australians to write a short non-fiction story and get it published on ABC online. This month's theme is personal challenge. Share a story about stepping outside your comfort zone in the name of self-improvement. Maybe you set out to learn a new skill, conquer a long-held fear or explore a different side of yourself? If you would like to learn more about how to write and edit your own short stories, you are sure to love this program.

Places are limited. Book at the library: 5427 2074.

Children's programs

Children's Programs at Woodend Library will recommence in line with the new school term. Please check our website for days and times, as changes are afoot! We look forward to introducing a new staff member in Children's Services at Woodend Library, and to seeing you all again soon for a fun year of Rhyme Time, Toddler Time and Storytime.

www.ncgrl.vic.gov.au

New technology

A new Self Loan Station is coming to Woodend Library, along with a newly configured workspace for using our public PCs and plugging your mobile device into our free Wi-Fi.

We look forward to seeing you at Woodend Library soon. Corner Forest and High Streets, Woodend.

Submitted by Susie Prestney and Lulu Cockram, Managers.

Program launch Arts Festival

Mark the date: Festival 6 - 9 June 2014

Program launch - 22 March

Our 10th Anniversary Festival is coming and we're ready for launch so join us

for the launch of the 2014 program, in conjunction with Duneira, with the fabulous Acacia String Quartet performing World's Apart.

Australian born Alfred Hill was an aspiring twenty year old when he travelled to the other side of the world to study music in Leipzig. Between 1887 and 1891 Hill was a student of Hans Sitt at the Royal Conservatorium of Music in Leipzig and began working on his first string quartet (he wrote a total of 17). He was invited to play second violin in the famous Gewandhaus Orchestra and was conducted by Brahms as well as Tchaikovsky, Grieg and Bruch. This inspiring period was to have a lasting influence on Alfred Hill and greatly influenced his northern European Romantic style of writing.

In contrast, Johannes Brahms had been composing for more than 30 years by 1891 and had already completed 3 string quartets, 2 string quintets and 4 symphonies. It is said that Brahms spent over ten years working on his first string quartet and had burnt nearly twenty quartets before he was content to publish his string quartets Nos 1 & 2, Op 51. at the age of forty.

The program will feature – Hill: No. 1 in B flat major and Brahms: No. 2, Op. 51 in A minor.

St Ambrose Church, Saturday 22 March, 2.30 - 3.30pm. \$35 / \$25 concession . Booking essential – www.duneira.com.au or by phoning 5426 1490.

Submitted by Alicia Patterson, House Consulting



KYNETON EQUIPMENT & PARTY HIRE

FOR ALL YOUR HIRING NEEDS
8-12 BEAUCHAMP ST PHONE (03) 5422 2311
KYNETON VIC 3444 FAX (03) 5422 2930

Email: kynhire@bigpond.net.au
website: www.kynetonhire.com.au

24sevenalarms.com.au

24 Seven Alarms Aust Pty Ltd

- Alarms installed, Serviced and Monitored
- Data cabling and phone line installation
- Medical Alert Systems
- Access Control Systems PSBL: 732-083-90s
- Digital Video Surveillance CCTV packages: domestic and commercial

1800 247 111/ 03 5427 4411
sales@24sevenalarms.com.au

Need A Shed

1300 019 960
needashed.com.au

- GARAGES
- BARNs
- HAY SHEDS
- MACHINERY SHEDS
- INDUSTRIAL SHEDS
- CARPORTS
- AIRCRAFT HANGERS
- CARAVAN SHELTERS
- GABLE OR FLAT ROOF

Quality Blinds at factory direct prices

- Sunscreen/Blockout Blind
- Latest Styles/Fabrics/Colours
- Automated Blinds
- Roller/Roman Blinds/Venetians
- Exterior Awnings
- Professional Installation Team

Ring Now for a **Free In House Consultation/Quotation**
Mark 0437 759013 Simon 0458 338995

*Contemporary Blinds
Where Style is Affordable*

O PIG!

Well, pigs really are flying! The Newham Mechanics Institute Sculptural Pig Project is in full swing and four pigs have flown to the studios of renowned local artists Helen Cottle, Stephanie Goss, Tim Jones and Jill Noble, who will apply their skills to transform these life size pig sculptures into works of art.



Other pigs have been allocated to local community groups to be decorated and local residents Joycelyn Moreland, Ellie Martin and Fran Spain will be assisting with this activity.

There are also many tiny pigs being decorated by members of the community with a theme of "P", such as punk pig, Picasso pig, postie pig, peppercorn pig, pearly pig etc. These are on show at the Newham General Store.

The culmination of the project will take place on Saturday 22nd March 2014 with a huge Festival, where all the pigs will be on display in Wesley Park, Newham, together with stalls of produce, music and entertainment. A prestigious art exhibition will also take place in the Newham Mechanics Institute on that day and also on Sunday 23rd March and artists who will be contributing works include, David Bryant, Peter Cole, Phil Cooper, Dan Flynn, Kevin Foley, Sarah Gabriel, Anton Hasell, John Wolseley, and many more. Mark those dates in your diary.

Submitted by Sue Massie on behalf of the steering committee.

Friends of Macedon Ranges Libraries

FOMRL invites anyone interested to join them for their Annual General Meeting and afternoon tea in Romsey Library on 6 February at 3pm.

Annual reports will be presented and there will be an election for office bearers for the forthcoming year. Macedon Ranges Shire Council's Manager of Community and Culture, Jill Karena will talk briefly about the libraries in the Shire – Gisborne, Kyneton, Romsey and Woodend. Nomination forms and the agenda will be available at all the libraries.

During the past year FOMRL has raised funds from book stalls held on Woodend Farmers' Market days, some of which were used for magazine subscriptions in libraries; to sponsor library events such as author talks and book vouchers for the Summer Reading Programme; and children's sessions for the Woodend Winter Arts Festival. We also visit interesting events and venues and have helped set up technology classes in Woodend library.

With your help we could do more, please join us! Membership is free.

Submitted by Helen Scott, Secretary. Tel 5427 4900



When you shop with a
local business
YOU GET BETTER SERVICE

green bean machine mobile coffee

local business for sale

- Operating Since 2006
- High Turnover
- Large number of regular clients and bookings
- Annual contracts in place with V-Line and Kyneton & Hanging Rock Racing Club
- 3 Coffee Vehicles - 2010 Hyundai i-Load, 5 x 8 custom built coffee trailer and stand alone coffee cart (with trailer for transport)
- Honda 6.5 kVa generator
- All equipment and stock on hand included
- Not a franchise so not limited by territories or suppliers
- Extensive client contact listings
- Walk In - Walk Out opportunity

The green bean machine will continue to operate until sold, so bookings into the future will be taken.

Genuine enquiries welcome via email
info@greenbeanmachine.com.au



BRIDGING THE GAP IN HEALTHCARE

Our local business offers personalised private mobile healthcare support to assist our clients in maintaining their independence in their own home and community. We are there when family and friends can't be.

Call our highly skilled Nursing Team today to discuss how we can enhance your lifestyle and independence, including health and domestic coordination.

Please refer to our website for a full description of services offered by our experienced team.

Our Services

- **Transport**
 - Qualified Nursing assistance to or from hospital, medical or other health appointments, on time, and in comfort. Wheelchair and walker enabled.
- **Social Support**
 - assistance to attend shopping, social outings, lunch, movies etc.
- **Patient Advocacy**
 - attendance at medical appointments to translate jargon, take notes for family, assist with scripts, pathology and radiology.
- **Personal Nursing and Home Care**
 - in your own comfortable surroundings.

procaresupport.com.au
1300 783 765



- Kyneton Farmers' Market - 8th February - St Pauls Park, Piper St, Kyneton
- Riddells Creek Farmers' Market - 15th February - Riddells Creek Primary School, Riddells Creek
- Lancefield & District Farmers' Market - 22nd February - High St, Lancefield
- Woodend Community Farmers' Market - 1st March
Cnr High & Forest Streets Woodend
Riddells Creek will feature a cooking demonstration with a local resident at the market. The Home Produce Exchange at Woodend's Community Farmers' Market is a great place to take your excess garden bounty & trade with others. This initiative is put on by the Macedon Ranges Sustainability Group.

Check out the website www.mrsgonline.org.au for this & other great local initiatives.

Sign up to be a local 'trader' in the Macedon Ranges with the Macedon Ranges Community Exchange. Administrators are present at the markets to answer all your questions. See www.mrce.net.au for more information. All four markets have great locally prepared foods available to eat whilst shopping. Friendly dogs are welcome on a leash. There will be free face painting for the kids & great live music happening too. It really is the place to be on a Saturday morning!

Submitted by Meggs Hannes



Woodend RSL

The Woodend RSL Sub Branch Women's Auxiliary would like to thank the community for their support in our Christmas Raffle. It was drawn at our Christmas Dinner night on the 21st

December 2013. The winners were, as follows; 1st Robyn Cozers, 2nd Les Thurgood, 3rd Gwenda, 4th Marg, 5th Shirley Newcombe, 6th Jeff Coundon, 7th Linda, 8th Steve, 9th Joyce and 10th Reg Till.

Our Dinner nights will recommence in March as the cook will be in Tassie for 5 weeks R&R, however the Wood ol' Boys, will have a Blues night here on the 7th of February. The next Dinner Night is on the 15th March with entertainment by local artist, Liz McKimm.

Submitted by Karen Meldrum Secretary



bodywise
UNDERWEAR

www.bodywise.com.au
1300 66 17 66
PO Box 804, Woodend. Hours 9-3 Mon-Fri.
ONLINE, MAIL, PHONE SALES ONLY

Wire-free bras, briefs & more ... sizes 10 to 30





Phone us to place an order and arrange delivery

JOANNE DUNCAN MP

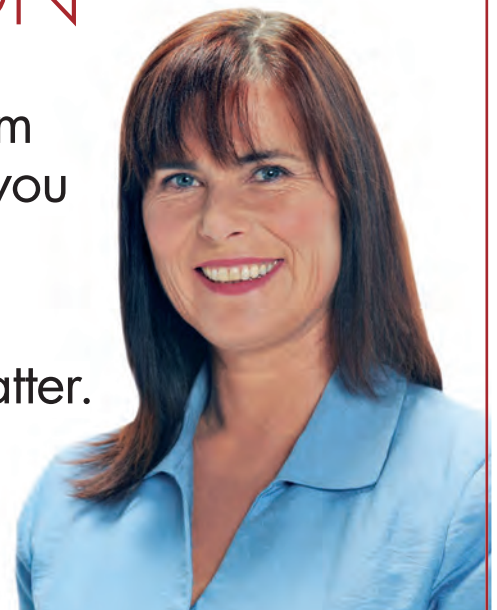
MEMBER FOR MACEDON

ADVERTISEMENT

As your local Member of Parliament I am keen to listen to any concerns or ideas you may have.

Please don't hesitate to contact me for assistance on any State Government matter.

Warm regards,
Joanne Duncan



Shop 14/9 Goode St, Gisborne VIC 3437

P: 5428 2138 F: 5428 2919 E: joanne.duncan@parliament.vic.gov.au

www.joanneduncan.com.au

Authorised by J Duncan, Shop 14/9 Goode St, Gisborne

1st Woodend Scouts 'Bus'

What do you do with a few sticks, some rope, eight wheelbarrow wheels and a hill - you make a 'bus' of course! 1st Woodend Scouts and Venturers were recently at a camp and decided to see if they could make a very long billy cart. This is the result:



Sully the dog wasn't allowed on, but he had fun anyway.
Submitted by Roger Neill, Leader-in-Charge, 1st Woodend Scout Group.

It's not too late to enrol your child at kinder

Are you considering where to enrol your child at kinder in 2014? Openings remain at several Council kindergartens throughout the shire.

Vacancies currently exist for four-year-olds at Kyneton, Lancefield, Riddells Creek, Romsey, Gisborne (Swinburne Avenue) and Woodend kindergartens.

Three-year-old vacancies are available at Gisborne (Swinburne Avenue and Grant Avenue), Riddells Creek, Macedon and Woodend.

Council's Director of Community Wellbeing, Karen Stevens, said the introduction of 15 hours of kindergarten and a number of recent facility upgrades meant greater opportunities for families across the shire.

"Now is a great time to experience what Council kindergartens have to offer. We've been working hard to meet demand for places whilst delivering quality services," said Ms Stevens.

Kindergarten supports a child's early development. Programs provide children with opportunities to be part of a group and to listen and respect others. Behaviour and skills learnt at this age assist children with their move into primary school.

"Children develop learning skills and begin to explore maths and science in a fun play-based environment," she said.

Health Care cardholders may be eligible for the kindergarten fee subsidy for four-year-old programs, which enables children to attend kindergarten for free.

For more information about kindergarten programs, vacancies, fees and enrolments, please contact Council's Enrolment Officer on 5422 0239 or visit mrsc.vic.gov.au/children

Submitted by G. Gamble for M.R.S.C.



Holistic Funeral Directors

Natural choices in after death and funeral care

5427 3112

info@naturalgrace.com.au

www.naturalgrace.com.au



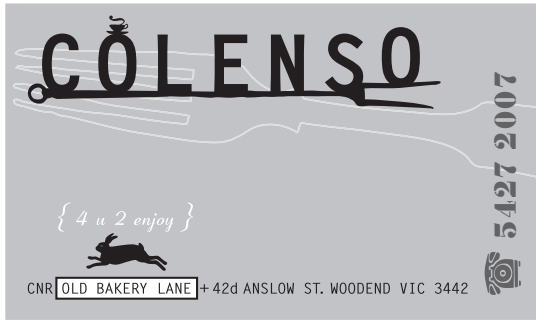
Samantha Moore
0438 062 143



Present your loved one with a voucher for a luxurious 30 minute treatment for only \$40.00 each.

- OrganicSpa Facial
- Pedicure
- Body Massage

www.facebook.com/RamaiSkinBodyCare



NOW AIR-CONDITIONED!

Saturday, February 8

Vichyssoise

Herb crusted yearling beef schnitzel with a roasted heirloom tomato ragu

Strawberries and cream

Saturday, February 15

Tomato salad with shallots and parmigiano

Wagyu skirt steak with crushed new

potatoes and hotel butter

Strawberry trifle

OPEN SUNDAY

**12 PM FEBRUARY 16,
FOR OUR SUNDAY ROAST**

Saturday, February 22

Melon and prosciutto

Lamb 'skotta ditti' with skordalia, braised greens and a wheatberry salad

Saturday, March 1

Figs, fresh goat cheese and local olive oil

Lamb rump with a tomato and bean ragu

Potted rice cream with blood plums

OPEN FRIDAY NIGHTS

HOURS

Monday to Thursday 8.30 - 4pm

Friday 8.30 - 9pm

Saturday 8.30 - 4 & dinner from 6.30pm

NOW AIR-CONDITIONED!

Very Special Kids

Very Special Kids has been supporting families of children with life-threatening conditions for over 25 years.

Glen Osmond Farm, Woodend is a service offered by Very Special Kids providing families with relaxing breaks at this peaceful farm just on the outskirts of Woodend.



Glen Osmond Farm features two purpose-built holiday cottages that can sleep up to eight people in three bedrooms. There is also a big wooden barn on the property for entertainment and amazing views across to Mount Macedon and for as far as the eye can see. And best of all, there is no charge for families to use the cottages.

To support these activities we have numerous fundraisers throughout the year, the first to be a Raffle in February running from Thursday 13th and ending with a stall at the Lions Club Market on the Sunday 16th with the drawing of the Raffle about midday.



Entrants on parade at last years Melbourne Cup Day at The Norma Richardson Hall. Photo courtesy Diane Dobson.

On Tuesday November 5th last year, we held a Melbourne Cup Day at The Norma Richardson Hall. (If you missed the flyers around town, keep it in mind for this year!). We had lucky door prizes, ladies and gents best and creative hats and also best dressed parades, raffles and afternoon tea. All races were sweeps where some who "have never won a prize before" found themselves on a winning streak. I would like to sincerely thank the many 'helpers' who worked diligently before and during the day to make things run smoothly.

Thank you to the many generous contributors, your gracious support makes these events successful. Please support future fundraising events as we continue to help fundraise for this very special cause.

Submitted by Diane Dobson

CASTLEMAINE—GISBORNE CLEANING SERVICE

CHRISTINE ADAMS, P.O. Box 240 CASTLEMAINE 3450

Carpet Cleaning Specialists

Duct Cleaning, Window Cleaning, etc.

For all your cleaning requirements

- no job too big or too small -
obligation-free quotes

christineadams9@bigpond.com

Mobile: 0419 006 591

Eating out, in & Around Woodend



Bar • Bistro • Accommodation

Function Room available for 21^{sts}, Birthdays, Weddings, Conferences
Come along and enjoy great food and open fire

OPEN MIC
February 6

SINGLES NIGHT with DJ
February 15

ALL FREE ENTRY

lunch and dinner - Wednesday to Sunday

a: 33 Smith Street Macedon 3440
p: 5426 3233 w: macedonrailwayhotel.com.au
facebook: Macedon Railway Hotel



BAR & BISTRO
THE VICTORIA HOTEL WOODEND

Lunch & Dinner 7 days

Locals Day Tuesday
\$19.50 inc glass beer or wine

Tradies Lunch Friday
\$16.00 pot and parma

Fox Sports on big screens

Private Meeting Room
No charge, seats 20

www.vicwoodend.com.
email: info@vicwoodend.com.au
03 5427 2721
67 High Street, Woodend

*Spoil yourself and your friends with
High Tea
in genteel style and luxury at*

CAMPASPE HOUSE
A COUNTRY HOUSE HOTEL & RESTAURANT

Saturday and Sunday from 12pm

from \$40.00 per guest - reservations are essential

GOLDIES LANE WOODEND 03 5427 2273
www.campaspehouse.com.au



Watch this space

**Expanding
Soon!**

Shop 1 & 2, 115 High St, Woodend
Open daily from 7am
54272486

www.bourkies.com.au

BE LOCAL - EAT LOCAL

SUPPORT THE LOCAL BUSINESSES WHO SUPPORT THE
AREA WHERE YOU LIVE, WORK AND PLAY

Holgate Brewhouse – Bar & Restaurant



HOLGATE
brewhouse

Established 1999

79 High St Woodend
Ph 54272510
www.holgatebrewhouse.com

Microbrewery Hotel with cosy fires,
stained glass windows and friendly
atmosphere.

Award winning local beer made on site.
Delicious house made bread, pies and
desserts.

Function rooms & stylish accommodation
in the heart of Woodend.
Open 7 days lunch & dinner.



Record numbers sign-up for Woodend Playgroup

Woodend Playgroup has been inundated with new enquiries – and new members for 2014.

A total of 147 children have been enrolled at Woodend Playgroup this year, which is an increase of almost 100 children on the same time last year. The family tally stands at 105 with 32 new families signing up in January alone.

Thankfully, we will be able to meet the growing needs of our expanding membership base with some big changes at the facility due for completion in February – and not a moment too soon!

We are delighted to announce we have raised enough funds to renovate the bathroom – a momentous effort and one that couldn't have been achieved without the wonderful support from the local community and our fantastic members!

With work commencing at the end of February, the bathroom will now be a commercially compliant space and offer disabled facilities. In addition, a new shade sail will replace the shade cover in the playground that was damaged and torn down following a storm in 2012.

We are looking forward to participating in the 2014 Macedon Ranges Sustainable Living Festival on Saturday 8 February from 10am to 4pm. You will find us at the Woodend Hub on Forest Street hosting a mini pot planting activity for children.

The children will pot cress seeds using clean soil and mulch in their very own take home terracotta pot. Cress, an edible herb, was selected for its fast growing characteristics coupled with its high Vitamin A and C content.

Keep an eye out for Woodend Playgroup's 'Super Woody' stand and be sure to collect a child-friendly recipe using cress while you're there.

Happy New Year to all and we look forward to another fun year at Playgroup!

Submitted by Laurissa Mailler



Events at the Rock

Car Display 9th February
The Macedon Ranges & District Motor Club's

annual picnic day car display – a day not to be missed by enthusiasts of vintage, veteran and classic cars; primarily for vehicles to 1987. For further information visit: www.picnicathangingrock.com.au/

Film Night - Friday 14th February

Celebrate Valentine's Day under the stars at Hanging Rock. Bring along a rug and a picnic and enjoy Peter Weir's famous film "Picnic at Hanging Rock".

Bookings 1300 888 802.

A Market at the Rock - Sunday 16 March 2014

Enjoy more than just a picnic at Hanging Rock at these special craft and produce markets. Visitors can find a variety of both local and regional stalls offering top quality Australian made products, gourmet foods and home grown produce. Visit www.craftmarkets.com.au for further information.

Camp Out at the Rock - Saturday 22 March

Experience an exciting overnight camp out at the base of the Rock. Great for families, school groups and couples! Bookings Essential phone 03 5421 1468.

Run the Rock- Date to be confirmed

The quiet country roads and picturesque surrounds of Hanging Rock provide the perfect setting for a morning run or walk! Choose from a 2km kids run, 5km run/walk, 10km run or 19km run. Proudly supporting Cancer Council Victoria. For further information: www.starttofinish.com.au or phone: 03 9285 0600.

Night Walks Friday 7 February, Friday 14 March

Experience the mystery of Hanging Rock at night, with a guided tour of the Reserve. During the tour with our experienced ranger you may discover gliders, wallabies, native birds, bats, possums and many other native animals - and if you're really lucky you may spot a koala.

Please Note: Tours will not operate on these dates unless appropriate tour numbers are filled. Exclusions and Conditions Apply. Numbers on each tour are limited and bookings are essential. Group bookings and specialty tour packages are available upon request.

For further information and bookings please contact 5421 1468.

From www.visitmacedonranges.com/natural-attractions/hanging-rock



SPANISH

Learn from a *native* Spanish speaking teacher

plus Children's classes

Join existing classes

Beginners to Advanced

Group and private lessons

New Courses starting Feb 2014

Nelly Molina LOTE qualified

nellymolina@live.com.au - 0421 36 39 39

Also lessons via Skype

Learn Spanish NOW!

— WOODEND —
Proud to be Pokie-free



The ladies of St Mary's Guild would like to thank the Woodend community, their loyal regular customers, and visitors to the area, for their support at the monthly street stall. Thanks also go to Woodend Newsagency and Marlins on High for allowing the Guild to trade outside their premises.


Held on the second Saturday of each month (except January) the Guild ladies set up stall in all weather with wonderful supplies of; homemade cakes, jams and preserves, and hand knitted garments. These stalls raise valuable funds for the Anglican Parish.

St Mary's is located at 15 Buckland Street, Woodend opposite the cemetery. Contact: The Rev'd Dr Petra Sherlock on 0421 871 126.

To hire The Norma Richardson Hall or for more information about St Mary's visit www.woodendanglican.org.au or contact woodendanglican@gmail.com, you can also keep up to date on Facebook.

Submitted by Angela Van Dam

Find the New Woodend Star online!
www.newwoodendstar.org.au



bringing art to life

Custom picture, artwork, tapestry and memorabilia framing, professionally and economically performed in-house

A comprehensive range of Art supplies at very competitive prices

- Pencil & paint by numbers sets for youngsters
- Artist's quality brush and paint sets for the more experienced
- Matt boards and mounts for artwork presentation
- Books & magazines for the art enthusiast, or those just wanting a good read

43 Anslow Street, Woodend – 5427 4455
 Next to the post boxes
feelingframed@bigpond.com

Australian Decorative & Fine Art Society (ADFAS)

Join us for a series of monthly informative and entertaining illustrated talks covering the full spectrum of the arts. Presented by experts in their field drawn mostly from the United Kingdom. Held in the Kyneton Town Hall at 7.30pm. Come as a visitor (\$30) or subscribe for the year. A light supper is provided after the show.

Program for 2014

- February 27: Crossing Boundaries. Emergence of Pioneering Women Artists in Britain & Australia 1900-1960.
- April 24: Aboriginal Art from Rock Art to To-day. Examples will include art from the Central Desert, the Kimberleys and Arnhem Land.
- May 22: Tantrums & Tiaras. Life backstage at the Royal Opera House in London. High drama, trials and tribulations.
- June 19: Edward La Trobe Bateman : The forgotten Pre-Raphaelite.
- July 17: The Baroque Lifestyle- its impact on Architecture and Fine Arts and its effect upon Clothing, Household objects and food.
- August 14: Ruskin and the pre-Raphaelites Ruskin, John Everett Millais, Dante Gabriel Rossetti and William Holman Hunt.
- September 18: Amber - Past uses and Present Fakes.
- October 16: A Brazilian Odyssey -The Works of Roberto Burie Marx, Latin America's foremost 20th century Landscape Artist.

Submitted by Dee Briscoomb, phone 5348 7629

WOODEND HEARING CENTRE



Did you know 1 out of 6 Australians suffer from hearing loss?

- Are you having problems understanding what people say?
- Do you have problems hearing in background noise?
- Have you worked in a noisy environment?

If you answered yes to any of the above, you may have a hearing loss.



Woodend Hearing Centre
 Located in the Brooke Street Medical Centre
 Cnr Brooke St & Templeton St, Woodend
 P: 5427 1002 M: 0425 238 109

Government and worksafe accredited practice. Latest digital technology available. Hearing aids fitted free to pensioners*
 (*Conditions apply)

If you haven't heard of "YOGA FIRST" or Jahne Hope-Williams you can't have lived long in the Macedon Ranges.

The key to this low resistance stretching exercise is to find a teacher who won't let you get away with faking it. Jahne Hope-Williams (the Director of "YOGA FIRST" and "The Australasian Yoga Institute") doesn't. She teaches sessions based on "yoga and the progressive techniques of fitness."

All we know is that Hope-Williams believes that training twice a week (consistently) is all that you need for stronger muscles, and a sleeker, more flexible, balanced body. Try it!

\$5 YOGA CLASSES

Wednesdays 12.30pm and Saturdays 10am, Woodend Community Centre, No booking necessary. Please bring a mat.

"DIVINE SLEEP"

Yoga Nidra Meditation Classes at the Studio. Tuesdays at 10am, \$125 per term.

www.yogabeautiful.com.au
email: yogafirst@netcon.net.au



THE AUSTRALASIAN
YOGA INSTITUTE



When you shop with a local business

YOU SUPPORT LOCAL JOBS

ON TIME!!!

Tired of being late for your appointments?

SPECIALIZING IN
AIRPORT & CITY
TRANSFERS

Sun-Ranges Hire Cars

can look after all your travel needs, with Prompt & Personal door to door service for less than you think

Airport Transfers - Business & Corporate Travel - Weddings & Special Occasions
- Sporting Events & Theatre Nights - Medical Visits



Phone 0468 347742

www.sunrangeshirecars.com.au



"for all your water needs"

The Water Bloke Specialises in

- Rainwater Tank Installations
- Tank To Toilet connections
- Grey Water Recycling

We're based in Woodend, so call us for a free consultation and Water Audit of your home.

Contact Craig on 0410 275 714
thewaterbloke@gmail.com

Woodend Neighbourhood House

Check out our program for Term One in this issue of the Woodend Star. We are excited by the program, some great new Pathways courses on offer that might tantalise some of our home business people – Intro to Blogging and Intro to Graphic Design – and a focus on building on people's existing skills with Computers Beyond Basics and our Literacy Basics Plus course. These are exceptional value and will really get people on track for job readiness and improving their lives.

We have Zumba back at the House this term. Call and get your name down for our Thursday morning or Friday evening slot – an hour of exhilarating exercise that gets you dancing. New on the Arts front is our Oil Painting for Beginners, it's on a Wednesday evening, great to wind down after a day at the office.

Community Needs Assessment

We have concluded our pilot of the Community Needs Assessment Survey. There were some lessons to be learned from conducting the survey through an unknown online operator and through using a methodology that tried to encompass Woodend Neighbourhood House in its larger community setting. We will be refining the survey and relaunching it but the focus for the Community Needs Assessment will be on face to face interactions through other community engagement methods. See you soon.

Whole Town Garage Sale

Register now for the Woodend Whole Town Garage Sale – it's on again on Saturday 22nd March. Registration is \$5 and due by Wednesday 19th March. It's a great way to get rid of all your excess 'stuff' and make some extra spending money just in time for school holidays and Easter.

Submitted by Jill Scanlon - Coordinator

JULIANA SMITH ^{BN (Mid), LLB, GDLP}

BARRISTER & SOLICITOR

Focusing on Family & Criminal Law

Macedon Ranges & beyond

Woodend Office (by appointment)

27 Urquhart St. Woodend Vic 3442

T: (03) 5444 1181 E: info@jlaw.com.au

Testimonials

"I was extremely happy with my service from Juliana Smith and her team. They were so compassionate and I felt I was provided with quality advice and service. I would recommend them to anyone." M.M. Gisborne. May 2013

"Juliana took on a case a lot of solicitors wouldn't have. Juliana listens, gives honest advice and got a good result." K.B. Bendigo May 2013

Massage
Pilates
Remedial
Rehabilitation

with Pamela Kell

By appointment
22 Goode Street
Gisborne
5428 1000
0408 093 098

Assisting in the repair and maintenance
of your body

Get fit and have fun at Monday morning netball

If you and your friends are looking to improve your fitness, have fun and socialise at the same time, then why not get the girls together and register a team in our Monday Morning Netball Competition in Woodend.

There is one vacancy left for a team to register for the Term 1 season so you need to be quick.

The season starts on Monday 3 February and games are played every Monday from 9.30am at Buffalo Sports Stadium in Woodend.

Netball is one of the most popular sports in Australia for girls and women and this program is being offered to residents in line with Macedon Ranges Shire Council's plans to support a healthy and active community that enjoys strong mental and physical wellbeing.

To register your interest, contact Shelley Knott at Buffalo Sports Stadium on 5427 3411 or email buffalo@mrsc.vic.gov.au

Junior and evening competitions are also held during school terms at the stadium.

To find out about other competitions and activities on offer at our sports stadiums and aquatic centres across the shire, visit mrsc.vic.gov.au/leisure

Submitted by G. Gamble for M.R.S.C.




TOWN & COUNTRY
Woodend Produce Store
 31 Brooke St, Woodend
03 5427 2753 **ELGAS**

*Poultry, Stock & Horse Feeds,
 Hay, Grain, Chaff, Pet Food,
 Fencing, Pine Sleepers & Poles,
 Concrete, Electric Fencing,
 Tanks, Oils & Lubes
 Irrigation, Garden Tools,
 Potting Mix, Pea Straw, Fertilizer,
 Herbicides & Much More!
 Elgas LPG Deliveries*

We fill BBQ Gas Bottles

Come in and see what we've got!
Open 7 days
 Monday - Friday 8.30 - 5.30
 Saturday 8.30 - 4.00
 Sunday 9.30 - 2.00



When you shop with a local business
YOU BENEFIT FROM LOCAL EXPERTISE

Volunteer at a Visitor Information Centre

If you are passionate about the Macedon Ranges, enjoy meeting people and interacting with visitors, locals and tourism operators then why not consider joining Council's fantastic volunteer team at one of the two accredited Visitor Information Centres, located in Woodend and Kyneton?

The centres are open daily (except Christmas Day and Good Friday). Rostered shifts are available from 9am to 1pm or 1pm to 5pm. The minimum commitment is two four-hour shifts per month.

Full in-house training is provided and a rewarding annual learning program which includes firsthand experience of many tourism facilities.

This is an opportunity to connect with other people and contribute your skills and experience to the community.

You can register your interest and download a position description from our website at mrsc.vic.gov.au/vic-volunteers. Alternatively, contact Jane Duncan at the Kyneton Visitor Information Centre on 5422 6785 or vic@mrsc.vic.gov.au.

Submitted by G. Gamble for M.R.S.C.

WOODEND NURSERY
 "LOCAL KNOWLEDGE FOR LOCAL CONDITIONS"
 36 URQUHART ST, WOODEND
 5427 1866
 Full range of plants, seedlings & gardening accessories
 open 7 days

JIGSAW STAIRCASES
 0408 153 124
 PO BOX 93 WOODEND 3442
 SERVICING BUILDERS AND OWNER BUILDERS ALL OVER MELBOURNE AND CENTRAL VICTORIA
 WWW.JIGSAWSTAIRCASES.COM.AU
 E: JIGSAWSTAIRS@OPTUSNET.COM.AU



Lachlan Fleming **CONSTRUCTIONS%**
 EXTENSIONS, RENOVATIONS, NEW HOMES
 SERVICING THE MACEDON RANGES
 **0401 499 898**  REGISTERED Building Practitioner
 Email: flemingconstructions@bigpond.com

“Have the chat”

Brooke Street Medical Centre is encouraging people to talk about organ and tissue donation with their loved ones during DonateLife Week: Australia's national awareness week to promote organ and tissue donation.

To help people discover the facts about organ and tissue donation, we will be providing information between Monday 24 & Friday 28 February. Anyone, whether a Brooke St Medical Centre patient or not, is welcome to drop in for information.

"We each need to have the chat with our family members so that we know each other's donation decision. Having the chat can make a life-saving difference to people waiting for a transplant," Dr Richard Bills said.

"In the same way that we discuss what we want to have happen in the event of our death, we also need to talk about whether we would like to become an organ and tissue donor. It's a conversation we can have today, that helps prepare our loved ones should they be offered the opportunity to proceed with organ and tissue donation" Richard said.

In Australia, the family will always be asked to confirm the donation decision of their loved one before donation for transplantation can proceed.

"We urge everyone to discover the facts about organ and tissue donation, register your donation decision on the Australian Organ Donor Register, but most importantly, share your decision with those closest to you." Richard said.

For more information, visit
www.donatelife.gov.au



Farewell to Candice

We sadly farewell Dr Candice Baker who has been with us for the past year. Candice is a GP registrar and will now proceed to her outer rural placement which is compulsory for her training.

We hope that Candice may be able to return to Brooke St Medical Centre in the future.

Brooke St. Medical Centre – tel. (03) 5427 1002

Screening to Prevent Cervical Cancer: The Pap smear versus a test for HPV (Human Papillomavirus)



Brooke Street Medical Centre is currently participating in a pilot study, the “Compass Trial”, to research new ways of screening women for cervical cancer. Until now women have been asked to have a Pap smear test every two years.

The Victorian Cytology Service and the University of New South Wales have embarked on a major trial to assess new and more accurate ways of screening for cervical cancer. Women who consent to participating in the trial will have a Pap smear taken in exactly the same way as usual except that the cells will be put into a fluid rather than on to a glass slide. When this sample reaches the laboratory women will be randomly put into different groups in the study. Some women will have provided the usual Pap smear; if their result is negative (no abnormal cells detected) they will be asked to come back in **3 years**. Other women will have a test for the human papillomavirus (HPV); if that test is negative, they will be asked to come back in **6 years**. (As a safety measure, some women in the latter group may be asked to have a Pap smear in 3 years or offered a colposcopy).

Participation in the trial is entirely by choice. Women aged 25-64 years who are Victorian residents and not pregnant will be invited to participate when attending for routine Pap smears. Your right to decline to participate will be respected and not affect the treatment you receive at the Practice.

For further information log on to
<http://www.compasstrial.org.au/>

After hours GP Helpline - tel. 1800 022 222

Better understanding your council

With Cr Jennifer Anderson

Currently Council is preparing the 2014/15 budget and action items for the council plan.

It is important that the community has input into this early in the process, so that what Council plan to do aligns well with what the community desires.

This is your plan, the Plan of the residents of the Macedon Ranges Shire, not of the officers and Councillors.

There are some things we must budget for, such as staff wages and superannuation, building and road maintenance, and essential council services such as kindergartens and child maternal health.

Other projects, such as upgrading sporting ovals, and the achievement of some of the desired outcomes of our open space, youth and other strategies, may be considered for inclusion.

This is where I ask you to think about what is most important to you and your community, and write to your Councillors and CEO as early as possible to let us know.

Late April/early May is when council will put out its draft budget and year 2 of the council plan for consideration.

It is better not to wait until just before these are due but to make a submission early.

Once the draft is adopted by council at a public meeting you have 4 weeks to make submissions, and can then speak in support of your submission at a special public council meeting if you wish.

You may comment on what you like in the plan and budget, or what you do not like, as well as things you wish to see included that do not appear in the draft.

After this, Councillors consider these submissions at a special council meeting (open to the public to listen to only) then may decide, if necessary, to make minor changes to the budget and council plan.

Substantive changes are not allowed to be made, which means if we decide to take a different direction the whole process must be repeated.

The local government act dictates that we must have our budget and council plan process completed by June 30, or ask for an extension.

Therefore, persuade as many people as you are able who support your initiative to write to council also.

*Warm regards,
Cr Jennifer Anderson*

WOODEND COMPUTER SERVICE
Sales - Service - Training & Help
THE BANK - 75 HIGH ST WOODEND
JASON JOHNSON - 0400528129
pcs@live.com.au

NURSERY ROAD

GARDEN SUPPLIES

Sand | Soil | Mulch | Pots | Plants

Water features | Fire wood

Hire Equipment | Synthetic turf

Sleepers | Wine barrels | Pavers

42 Nursery Road Macedon 3440 Victoria | Email hello@nrsgsupplies.com.au
Telephone 03 5426 2400 | Facsimile 03 5426 4972
General open hours Monday-Friday 7.30-5pm, Saturday-Sunday 9-5pm
Arrangements outside these hours can be made.



Equine Tension Release Therapist

If your horse is stiff, sore, tense, irritable, stressed or nervous, in muscular pain, or generally seems unhappy, if they have difficulty going forward, flexing, lacking impulsion, or unwilling to work, then let me give your horse the gift of feeling well and restore their energy and balance naturally.

Sharon Velo
0408 123 341
shazmara@bigpond.com
Macedon Ranges and Mt Alexander shires and surrounding areas

Specialising in restoring the natural balance and well being of horses.

AVAILABLE FOR LEASE IN WOODEND

SHOP SPACE



AVAILABLE IN 19TH HOLE SHOPPING CENTRE

- SHOP 8 217 sq m
- SHOP 19 97 sq m

Suit a variety of uses in this busy shopping precinct situated in the heart of Woodend.

CONTACT IVOR JOHNSON
Phone 5427 4089 or 0407 273 961
75 HIGH ST WOODEND



SOVEREIGN financial

Sovereign Financial is a family business built on the values of Trust, Insight, Expertise and Relationships. We are an independently owned financial advisory firm that specialise in a range of services including:

- Retirement Planning
- Wealth Creation
- Investment and Portfolio Management
- Taxation Advice
- Estate Planning
- Centrelink Advice
- Personal Protection Insurance

Please contact Jerome Smith or Sarah Connolly on 03 9629 9223 to arrange a time to speak to one of our experienced advisers.

Office Locations:

Ballarat Office

88 Mair Street East
Bakery Hill
03 5333 7088

Melbourne Office

Suite 1 Level 6
470 Collins St
Melbourne
03 9629 9223

Kew Office

5 Wellington St
Kew
03 9855 0578

Sovereign Financial Group Pty Ltd AFSL 383416

Fun, fitness and relaxation

Woodend's Buffalo Sports Stadium and the Macedon Community Centre are registering interest in a range of dance, music, fitness and relaxation programs for children and adults in 2014.

The programs are being offered to residents in line with Macedon Ranges Shire Council's plans to support a healthy and active community that enjoys strong mental and physical wellbeing.

At Macedon Community Centre, adults wanting to get fit in the new year can register for bootcamp, while children can join weekday morning kinder ballet and mini maestro classes during school term.

Weekly kindergym classes will also be running at Buffalo Sports Stadium in Woodend, starting Friday 7 February. 1-3 year old sessions will run from 10am-11am and 3-5 year old sessions from 11am-12noon.

New to Buffalo Stadium in 2014 will be a "Yogos" program for those aged 2-5 years. These yoga-inspired classes will be dependent on numbers, with exact dates and timing to be confirmed.

Buffalo Stadium is also planning to introduce T'ai Chi classes this year, depending on interest. Great for flexibility and relaxation, T'ai Chi improves balance, lowers stress and increases body awareness.

Volleyball and netball competitions are also starting back, with more teams and players needed at Buffalo Sports Stadium. Mixed volleyball will take place on Thursday evenings from 7.30pm, and netball will be held on Monday mornings with games starting from 9.30am.

To register your interest in any of the above programs, contact Shelley Knott on 5427 3411 or buffalo@mrcs.vic.gov.au

Submitted by G. Gamble for M.R.S.C

WARNER'S JEWELLERS

EST. 1912 ~ 4th Generation Jewellers

Manufacturing Jewellers

Jewellery Repairs

Watch & Clock Repairs

Valuations & Rethreading

97 High Street, Woodend

5427 1573

Furniture Upholstery

SCR Upholstery

We offer

- all aspects of upholstery to modern and antique furniture
- free quotes
- free pick up and delivery



Steve - 0419 434 927

www.scrupholstery.hipages.com.au

This page is proudly sponsored by the 19th HOLE SHOPPING CENTRE



Upcoming Events

February

- 3 Women's Morning Netball Season starts
- 6 Rotary Club of Woodend – official opening of Exercise Track
- 7 Hanging Rock – Night Walk
- 8 Macedon Ranges Farmers Market – Kyneton
- 8 Sustainable Living Festival - Macedon Ranges Sustainability Group
- 8 St Mary's Guild street stall
- 9 Hanging Rock – Car Display
- 12 Macedon Ranges Film Society – The Sapphires
- 15 Submissions due for The New Woodend Star
- 15 Macedon Ranges Farmers Market – Riddells Creek
- 22 Macedon Ranges Farmers Market – Lancefield & District
- 28 Kyneton Music Festival & Beard Fest, Till March 2

March

- 1 Woodend Farmers market
- 1 & 2 Lancefield & Macedon Ranges Relay for Life
- 14 Hanging Rock – Night Walk
- 15 Woodend Autumn Carnival – hosted by St Ambrose School and Parish
- 15 Submissions due for The New Woodend Star
- 16 Kyneton Aquathon
- 16 Hanging Rock - Market Day
- 22 Newham O Pig Festival and Art Exhibition
- 22 Woodend Whole Town Garage Sale
- 22 Hanging Rock – Camp Out at the Rock
- 23 Art Exhibition Newham Mechanics Institute
- 23 Woodend & District Heritage Society – Dedication Ceremony
- 25 ANZAC Day

April

- 13 Gisborne Aquathon
- 15 Submissions due for The New Woodend Star

June

- 6-9 Woodend Winter Arts Festival
- 15 Submissions due for The New Woodend Star

Get listed!

July

Send your event details to

- 15 sales@collieroffice.com.au Woodend Star

COMMUNITY GROUPS CONTACT DETAILS

Alcoholics Anonymous, Friday night, Cobaw Community Centre, 0409 131 144
 Australian Breastfeeding Association, Heather, 5427 2398
 Cobaw Thursday Walking Group 5427 3340
 Daylight Masonic Lodge, 5427 2480
 1st Woodend Scout Group, 5427 2848, Leisa 0429 331 695
 Friends of Macedon Ranges Library, Sheila/Don 5427 3644
 Garden Club, 5422 6062 / 5427 3340
 Kyneton Municipal Band, Doug, 0411 420 113
 Lancefield-Macedon Ranges, Relay For Life, Kathy 0419 644 688
 Living Word Christian Church, 5429 6327
 Historical Society, Courthouse, 5427 2523
 Macedon Ranges Art Trail Nadine 0439 399 838
 Macedon Ranges & District Motor Club, 10 Webb Cres, New Gisborne 1st Wednesday each month 8pm
 Macedon Ranges Amateur Radio Club Graeme 0418 838 300
 Macedon Ranges Animal Aid, Buffalo Sports Stadium, 5427 1752
 Macedon Ranges Bridge Club, 5427 1884
 Macedon Ranges Families of Children with Disabilities Support Group, 5427 3365
 Macedon Ranges Residents Assoc., 5427 1481 or 5427 2651
 Macedon Ranges Photographic Society, Ron Mathews, 5427 3284
 Parent Support 4 LD, - Kerrie 0414 432 158
 Probus, 5427 2003
 R.S.L., Anslow Street, 5427 3122
 Red Cross, 5427 1260
 Rotary Club of Woodend, meetings weekly at Vic Hotel Thursdays 6.45pm, Brendan 5422 6442
 St. Mary's Guild, 11am, 4th Wednesday of month
 St. Mary's Street Stall, 9-12 noon outside Woodend Newsagency (2nd Sat of the month)
 Woodend Art Group, Railway Station, 5427 1659
 Woodend Business & Tourism Group woodendtraders@gmail.com
 Woodend Landcare: Meetings and weekend working bees - Jo 5427 1909
 Thursday Crew - morning - Stewart 5427 4615
 Woodend Hanging Rock Petanque Club, Hanging Rock Reserve, 5420 7595
 Woodend Lions Club, Meetings 2nd/4th Wednesday each month, Barry McDonald, 5427 1272
 Woodend Neighbourhood House, 47 Forest St, 5427 1845
 Woodend Playgroup 0467 093 878
 Woodend Pony Club, 5427 2793
 Woodend Senior Citizens Club, Comm. Centre
 Woodend SES Training Nights Monday, Urquhart St
 Woodend Tennis Club Laura 0408 881 763
 Woodend Winter Arts Festival Inc., info@wwaf.org.au

Ian Marks Liquor
8554 0540

Blue Orange Concepts: homeware
5427 4500

Woodend Pizza & Pasta
5427 3777

Coles Supermarket
5427 2377

**Collier Office & Business Assist
and Woodend Copy Centre**
5427 3092

Pets Haven
5427 3603

Mitre-10 Woodend Hardware
5427 2314

Noodle Dynasty
5427 4880

BP Woodend
5427 2248

Target Country
5427 4366

Macedon Ranges Travel Services
5427 4777

Kosmac & Clemens: optometrists
5427 4577

Alissa Kate
Skin, Body, Beauty, Hair
5427 3822

Salvation Army Family Store
5427 4421

Loose Change Bargains
5427 4466

Shop 19- For lease
0407 273 961

Australia Post
5427 2600

Feeling Framed
5427 4455

The Spa Beauty Therapy Centre
5427 3322

HIGH STREET SHOPS

Color Me Cooper
5427 1454

Chelleon For Hair
5427 3246

RT Edgar Real Estate
5427 1222

Woodend Bakery Cafe
5427 3434

Amanda Millar MP

MEMBER FOR NORTHERN VICTORIA REGION



*Your Liberal voice
in the Macedon Ranges*

Wishing you and your
family a safe and
prosperous 2014

For any assistance with State
Government matters affecting you
and our community, please contact
my office here in Woodend.

Amanda



Amanda Millar MP

Member for Northern Victoria Region

Tenancy 3, 80 High Street
Woodend 3442

Tel: (03) 5427 2444

amanda.millar@parliament.vic.gov.au



@AmandaMillarMP

Authorised by A Millar, Tenancy 3, 80 High Street, Woodend

Working for Woodend

– *Amanda Millar MP*

I'm very passionate about our Macedon Ranges communities having lived at Mount Macedon for the last 15 years. I am thrilled to have my electorate office right here in Woodend and always enjoy meeting and talking to residents in the many great shops, cafes and businesses in town.

Locals will know that it has been a very busy period for the Victorian Coalition Government with a number of recent announcements to improve much-needed local infrastructure and services in Woodend.

A number of Woodend's great sporting clubs have been successful in their applications for State Government funding in recent months.

Woodend Sports precinct at the Woodend Racecourse Reserve has received \$50,000 funding to assist with the refurbishment of the existing dilapidated youth facility, currently leased by Woodend Pony Club.

Additionally the Woodend District Netball Club, Macedon Ranges Basketball Association and Woodend Junior Football Netball Club were very excited to receive a \$59,000 funding boost to upgrade netball and basketball courts and lighting.

I have recently announced a number of significant safety upgrades to our local roads, including \$1.088 million upgrade to the Tylden – Woodend Road and a \$1.047 million upgrade to the Woodend – Lancefield intersection.

My electorate office in Woodend is able to assist you with a range of issues including any concerns you have with State Government departments. The office is located at 80 High Street Woodend. Email amanda.millar@parliament.vic.gov.au or telephone 5427 2444.

Wishing you and your family a safe, happy and successful year in 2014.

Warm regards, Amanda Millar

MACEDON CHIROPRACTIC

CHIROPRACTIC

We can help you with:

Rehabilitation
Pregnancy
Unsettled Babies
Healthy Lifestyle
Growing Children
Headaches

YOGA

General Yoga
Mums & Bubs
Kids Yoga



MASSAGE

Remedial Massage
Relaxation Massage
Sound Massage
Kinesiology

26 Victoria st, Macedon

5426 3945

enquiries@macedonchiropractic.com.au

The fencin' fella

- colorbond
- tubular
- timber
- steel picket
- pool

Mini Earthmoving Kanga Loaders

Attachments include:
rotary hoe, soil leveling bar,
4 in 1 bucket, trenchers,
post hole diggers, tipper

SHAUN BARRON

MOB: 0407 232 900 or 5422 3488 AH

Marriage Celebrant



Patsy Buckland m: 0437 179 078

www.allmarriagecelebrations.com

Located in Woodend

The Gisborne Singers

The Gisborne Singers are back from a well-earned break and following Australia Day celebrations are now embarked on an excellent programme for performances on Sunday 6th and Sunday 13th April.

These will comprise Vivaldi's 'Gloria' and favorite excerpts from Bach's St Matthew and St John Passions.

Patrons will be delighted to know that we have at last found a venue in Gisborne suitable for our concerts at the Church of Christ new auditorium on Saunders Rd. As a well-established choir since 1980, we encourage those in the community to join us.

We need sopranos, altos, tenors and basses and we are very user friendly. Rehearsals recommence on Tuesday 21st January and continue each Tuesday at Holy Cross Primary School, New Gisborne commencing at 7.30 p.m. Just come along or telephone Grainne Black (President) on 5426 4698 or D'Arcy Wood (VP) on 5428 3040.

Submitted by Richard Whiteley



Do something memorable this Valentine's Day

An opportunity is being created for you to renew your Wedding vows during a special Sunday morning Service at Romsey on February 16th 2014. If interested please contact Encourage Church today!

If you would like to know more about faith in Jesus please contact the Encourage Church Office on 5429 6327. We would be happy to assist you in your search for the true meaning of Life. You are invited to join us at one of our Sunday Services.

Life Groups recommencing every fortnight from Monday 3rd February 2014; Chillax Youth Group & Evening PM Sunday Services recommencing February.

We also offer Before & After School care and School Holiday Vacation Care; Weekly Sunday morning Children's programs during school terms.

Submitted by Pastor Marilyn Hunter



Vet Angel

Compassionate end of life services for companion animals in your home

- Consultation • Palliative care
- Euthanasia • Burial or cremation

Dr Michelle Williams BSc BVMS (hons) 0408 506 836
www.vetangel.com.au



THE WOODEND WOOF WALKER 

Call Chris for all your pet sitting needs.

All pets catered for on a home visit basis.

P: 0431 533 509

E: info@woodendwoofwalker.com

W: www.woodendwoofwalker.com



2SCALE BUILDING DESIGN & DRAFT

RESIDENTIAL BUILDING PLANS

Sketch Design & Planning
 Bushfire (BAL) Assessments
 Town Planning Permits
 Building Permits

KARYN BIANCO 

0425 723 183
WWW.2Scale.com.au



Feel sensational at The Spa

Our team of professional and passionate therapists can assist you with all of your needs...
 With microdermabrasion, IPL, peels, facials, massages, waxing and more, we are open 6 days a week.

The Spa

Beauty Therapy Centre

Gisborne | 3/31 Brantome St Gisborne 3437 | 03 5428 8800
 Woodend | 41 Anslow St Woodend 3442 | 03 5427 3322
www.thespa.com.au



"I love Mini Maestros because...It makes me feel happy and I can sing, everywhere I go."
 - Bailey, 3-4 yr old class.

Mini MAESTROS
 Music Teaches Children

Children love playing percussion instruments and musical games with Mini Maestros. Best of all, they have fun while they learn!

Share the love of music with your child in 2014.

Enrol now!

Classes in Gisborne, Kyneton, Macedon, Sunbury & Woodend.

Classes for ages 6 months to 5 years

P 0417 703 690 jo@minimaestros.com.au
www.minimaestros.com.au

Truck & Bobcat Hire



- Paving Turfing Rockeries
- Paling & Colourbond Fencing
- Watering Systems
- Retaining Walls
- All of your garden and driveway construction catered for

CD & MC Muir Pty Ltd
craig@bobcatcraig.com
 0417 331 085 5427 3095

Woodend Self Storage

(Vic) Pty Ltd

66 Units
Full security
Trailer hire available
7 day access
Affordable prices
Insurance available



For any enquiries please contact:

Leonie or Dennis Barker 5427 4175 or 0413 869 583
33 Bowen Street Woodend

Adult bike riding program

To help people get back on their bikes or start cycling for the first time, Macedon Ranges Shire Council is facilitating its final round of AustCycle programs as part of the Healthy and Active People Initiative.

AustCycle equips adults with the skills and confidence to cycle regularly. The program caters to a range of skill levels, from those who have never ridden a bike to those who are comfortable but may not have ridden for a long time. Participants learn the basics of balance, bike setup and safety.

This beginner bike riding program will be the eighth program ran as part of the initiative which has seen almost 50 people in the Macedon Ranges get back on their bikes to re-learn the skill of riding a bike safely.

The seven-week AustCycle bike riding program starts on Thursday 6 February at the Woodend Buffalo Stadium and the cost is a gold coin donation per session.

Participants are required to bring a helmet and bike, but those without access to a bicycle can contact the Healthy Communities team for assistance.

Places are limited for the AustCycle program. To register or find out more information, contact Council's Healthy Communities Team on (03) 5422 0216 or email healthycommunities@mrsc.vic.gov.au.

This National Partnership Agreement on Preventative Health initiative was funded by the Australian Government.

Submitted by G. Gamble for M.R.S.C

BLACK FOREST



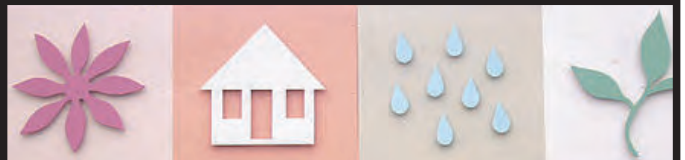
• Sales • Service
• Spare Parts

Mowers
&
Brush Cutters

5427 2693



• GENERAL MECHANICAL REPAIRS • BATTERIES • WHEEL ALIGNMENTS
• SERVICING ALL MAKES AND MODELS • NEW & SECOND HAND TYRES • HANDS FREE CAR KITS
66 URQUHART STREET, WOODEND



CarasMatic

GIFTS FOR ALL OCCASIONS

Sale Extended!

20% off

selected items

Ends March 1st

CARASMATIC

HAS SOMETHING FOR EVERYONE

100 High Street Woodend 3442 5427 3766

carasmatic@bigpond.com

FOUR OUT OF FIVE

**BUSHFIRE DEATHS
HAPPEN CLOSE
TO HOME.**

Don't wait. Leave early. Pack your Emergency Kit so you're ready to go.
Listen to local radio and check the Fire Danger Rating so you know when to leave.
Stop making excuses.

LEAVE AND LIVE.

visit emergency.vic.gov.au

call **1800 240 667**

download the **FireReady** app

FireReady 

**RECOGNISING
WOODEND'S**  **volunteers**

RON & POLLY BOWEN

- Volunteers with Woodends Visitor Information Centre, Glen Osmond Farm – Very Special Kids and Daffodil Day.

When I arrived to meet Ron & Polly Bowen; I was surprised to be greeted by Diane Dobson, well known Neighbourhood House Volunteer. “Ron and Polly are my parents”, she explained. What an amazing coincidence I thought. On later reflection, I realise this was not really a coincidence at all. Volunteering, like many other traits or characteristics does appear to be prevalent amongst many families. Ron and Polly have set a remarkable example of volunteerism for their own family of four children, 9 grand children, and 8 great grand children. With an exhaustive list of organisations and clubs they have represented during a full and engaging lifetime, now both in their eighties, they continue to be actively involved in our local community. I suspect they know no other way of living.

Ron and Polly were both born locally and like their own parents were educated at Heskett Primary School and Kyneton High School. Their own four children would later attend the same schools – three generations of Bowen and Oates descendants. As a young man Ron was a founding member of the Heskett Football Club, along with Stan & Eddie Muir. Ron was President of the Heskett Primary School Committee, while Polly was President of the school Mother’s Club. They both served with the Heskett/Kerrie Fire Brigade, and were responsible for organising the call outs for seventeen years. During this time they were also

involved with St Mary’s Church in Woodend, and organised many catering events and Debutante Balls. They worked together for the Uniting Church Op Shop, Polly in charge of the store on every Thursday, and organising other volunteers; and Ron fixing toys and small pieces of furniture. Polly has only just resigned this year from the Op Shop after 30 years of service.



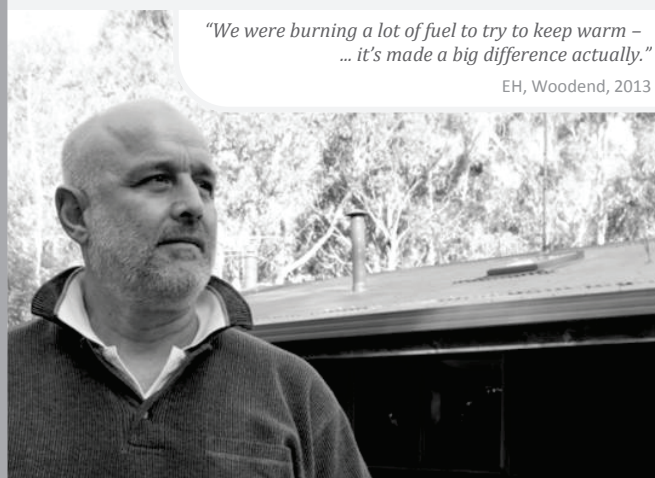
Their home off Straw’s Lane was burnt out in 1983 about a fortnight before Ash Wednesday. They view their own personal loss within a much larger perspective, as the burnt path of this initial fire provided a fire break and an escape route for many others on Ash Wednesday. They rebuilt their home, but then due to health reasons moved in to the Woodend township a couple of years later. They both became involved in the Ambulance Auxiliary, which at that stage ran the monthly village markets in the service road in High Street. After about ten years, the market temporarily went into recess before moving to its current site with the Lion’s Club. Of course, Ron and Polly went with the market and became honorary Lions Club Members. They had already been helping out with the Annual Lion’s Art Show for many years, so it seemed a natural progression. They both served with the Lion’s Club for 27 years.

Six years ago Ron became a volunteer with the Woodend Visitor Information Centre. Remarkably, this is the first time in their married lives that Ron and Polly have

continued on page 26

Keep your home cool in summer and warm in winter

with lasting retrofit solutions that can be easily applied to your home.



“We were burning a lot of fuel to try to keep warm – ... it’s made a big difference actually.”

EH, Woodend, 2013



Improve the comfort of your home and reduce your energy costs with...

- ✓ Professional Draught Proofing
- ✓ Ceiling Insulation
- ✓ Underfloor Insulation
- ✓ Wall Insulation
- ✓ Secondary Glazing

(Double Glazing for Existing Windows)



1300 326 627
www.ecoMaster.com.au

Visit us on Saturday the 8th February at Woodend’s Neighbourhood House and Community Garden for the

Macedon Ranges Sustainable Living Festival

... and ask us about our festival special!

RON & POLLY BOWEN: Woodend's Star Volunteers

not worked for the same organisation at the same time. He enjoys this work immensely, and his extensive local knowledge regularly comes in handy regarding directions for travellers and also assisting Council with the odd road naming suggestion. Ron says his most asked question is "Where is the best place in town to get coffee?" He laughs and explains that is always tricky, as the visitor information staff must remain impartial in their recommendations. Ron says they also regularly receive phone calls from across Australia, asking about the magnetic hill on Straw's Lane. Cars supposedly roll up hill. Investigations have suggested this is an optical illusion, but many curious people continue to come and experience this phenomenon for themselves.

Ron and Polly continue to support Glen Osmond Farm – Very Special Kids, and the Cancer Council's Daffodil Day; selling merchandise and raffle tickets, and helping with fund raisers. Polly recently joined the Probus Club, they both enjoy gardening, and the couple speak very passionately of their travel experiences, particularly a recent trip to the Kimberley. Ron and Polly have passionately supported many different organisations over the years. "When you are on a committee, commit to it" says Ron. Ron and Polly Bowen are a wonderful example of volunteering and of a life devoted to serving their community.

Our local Visitor Information Centre in Woodend utilises the services of approximately 35 regular volunteers. Open seven days a week, there are many opportunities for new volunteers wanting to get involved. Please contact Christine Sullivan or Derek Shepherd on 5427 2033 or at vic@mrcs.vic.gov.au if you would like to find out more information.

"Woodend Connections – Volunteer Network" c/o Woodend Neighbourhood House, 47 Forest Street, Woodend. Phone: 5427 1845. reception@woodendnh.org.au, Like us on Facebook: www.facebook.com/WoodendConnections

Written by Marion Coulson

In conjunction with Woodend Neighbourhood House, The New Woodend Star will highlight some of the wonderful volunteers who contribute so much to our community. If you would like to highlight the actions of a volunteer you know - email reception@woodendnh.org.au for more information.

You have Questions  We have Answers

CHINKA (HEP) STEEL - Your "One Stop" Legal Shop

Expert Advice Available

- * Family Law—who gets what?
- * Been charged by the Police?
- * Conveyancing - avoid the traps!
- * Need a Parenting Agreement?
- * Need a Co-habitation Agreement?
- * Executor responsibilities?
- * Been left out of the Will?
- * Buying/Selling a Business?
- * Do you have a current Will?
- * Are you a Victim of Crime?

Ph: 03 5427 2477
74 High St Woodend
chinka@chinkasteel.com.au

www.chinkasteel.com.au

Visit our website for information on various areas of law, useful links, downloadable brochures, plus much more!



EnVie
FITNESS

Summer...
TIME TO DO THE THINGS
YOU LOVE

Trial EnVie
\$15 for 15 days
call 1300 510 510
or visit
enviefitness.com.au

Fun, Fast, Female workouts...get in, get out and get on with your day.

Spend more time with your friends and family this summer while still getting results. Feel confident and look great with \$15 for 15 days at EnVie Fitness.

No contracts and no joining fee when you start during summer.

Now franchising visit enviefranchise.com.au EnVie Gisborne - Shop 6 Nexus Way (behind McDonalds), Gisborne VIC 3437

Welcome to the Woodend Star
Kids Club
February Birthdays

15th	Sam Forbes	Turns 13
17th	Tyler Daniel Sturt	Turns 13
20th	Joseph Hebb.....	Turns 12
25th	Malachi Anderson	Turns 12
25th	Chantelle Takos	Turns 13

**Happy Birthday
 Everyone!**

JOIN THE WOODEND STAR KIDS CLUB
 Fill in your details below and mail to P.O. Box 387 Woodend
 Age limit is 13 years old. Must be a resident of the 3442 postcode

Full name: _____

Address: _____

Date of Birth: _____ Age: _____

Phone: _____

Parent/Guardian
 Signature: _____

Sponsored by:



**Collier Office
 and Business Assist**
*You can collect your birthday surprise by
 visiting Collier Office & Business Assist*



**Australian
 Red Cross**
 THE POWER OF HUMANITY

Red Cross

The Woodend Unit of Red Cross will hold its first meeting of 2014 on Thursday 6th of February. Our meeting is held at 39 High Street Woodend commencing at 1.30pm. All new members will be made very welcome.

Submitted by M.Hocking



FAIRHURST CONVEYANCING
 and Secretarial Services

For all your
Property Transfers
 Ring Sue Fairhurst on

5427 2382
 27 Urquhart Street, Woodend
 MVCA & AIC

Film Society

2013 saw a fine selection of films shown at the monthly meetings of the Macedon Ranges Film Society. Asked to nominate their favourite, members were hard-pressed indeed. Was it that fabulously portrayed version of Cole Porter's life in the film De-Lovely? Or the moving story of a Palestinian widow defending her property in the thoughtful film, The Lemon Tree? Then again, who was not uplifted by the hilarious end-of-year offering of Danny Kaye's The Court Jester?

This year will not disappoint and kicks off on Wednesday, February 12th with energy, humour and a slice of Australian and Vietnamese history in the 2012 film, The Sapphires. Set in 1968 it presents the true story of four young and very talented female Aboriginal singers who start out small but their career, managed somewhat haphazardly by an English DJ they pick up in a pub, ensures that greater things are in store.

Entertaining U.S. troops in Vietnam means the girls experience a mixture of liberation and joy as their talent is acknowledged followed by terror as their previously innocent view of life is severely tested when the real ramifications of war hit home.

The Macedon Ranges Film Society meets on the second Wednesday of every month at 7 p.m. in the Woodend Community Centre. Film notes are provided and supper afterwards is kindly supplied by our members. New members to make initial contact by emailing mrfilmsociety@gmail.com or phoning Lorraine on 5427 0921 or Christine on 5429 5452.

Submitted by C. Caley

Give your 2014 financial goals a rev up!

Now's the time to focus on your 2014 financial goals and we've put together a few tips that might help. You can start small and build up – the key is to START

Get organized: Instead of paperwork cluttering up the kitchen or getting lost get some file folders, label them and have them readily accessible to pop the paperwork in. Start sorting papers for your 2014 tax return and 2013 if not done yet.

Simplify your financial life: List out your bank account/ credit cards: Consolidate them to save on fees and earn better returns. Sign up with your bank for email/text alerts when an account is running low or a bill is coming due.

Review your investment portfolio – List your investments. How are they tracking? Need to get rid of any under performers and claim the tax-deductible losses now? A financial planner can assist with this.

Track your pennies – record where you spend your money – do a 14 day trial to see the patterns and what money saving changes you can make – start small & build up.

Bump up your retirement – Increase what you're putting away for retirement e.g salary sacrifice a bit each month.

We're here to help you achieve your goals. For further Tax Planning assistance or a complimentary consultation with a financial planner please give us a call.

Riverwood Group Pty Ltd
Accountants, Advisors & Planners
 111 High Street Woodend
 2/19 Bourke Street Kilmore
Phone: 5427 8000
www.riverwoodgroup.com.au
 Email: admin@riverwoodgroup.com.au





Community Artists At Cobaw

Cobaw's Community Access and Support Program Coordinator Caroline Sarah is pleased to announce the launch of The Artists in Programs Initiative in 2014.

This new initiative will see 11 feature artists over 2014, exhibiting their art work in space used for Cobaw's Aged & Disability Programs. This will create a unique partnership between artists and program participants, and a much needed dialogue as the space changes monthly.

"With Cobaw's move to the Beauchamp Street site, an opportunity to use the space in a more creative way presented," Caroline Sarah said.

Our January artist is the energetic Lynette Joy; a Kyneton resident whose vibrant acrylic works will enliven the space. Lynette has enjoyed success both in Australia, Germany and France, as well as locally. Lynette's quirky sense of humour is evident in her work, featuring amusing portraits of women with birds on their heads, as well as larger works from her dancing series.

Lynette Joy is looking forward to the opening of her Ravensfield studio in Kyneton soon, and is welcoming the opportunity to share her works with her community prior to this time.

Other community artists who would like to exhibit at Cobaw can contact Caroline Sarah on (03) 54211 666.

Submitted by Amity Bradford for Cobaw Community Health

Business For Sale

Nature's Garden has been successfully operating now for over 7 years.

We offer the full range of organic groceries, fruit and vegetables.

Operating from a very well established retail store with great outlook and parking.

- Excellent Turnover
- Very loyal customer base
- Great plant & equipment
- Loyal & Experienced staff

For more information regarding this business please contact Mark on 0409 535 744

Naturally, better products

- Business / home networking
- Home Audio/video
- Broadband wireless
- Hardware sourcing & evaluation

Ian Templeton | 0419 556 140

BE LOCAL BUY LOCAL

SUPPORT OUR COMMUNITY AND SHOP LOCALLY

Guaranteed Relief from Neck and Back Pain
GAIA MASSAGE THERAPY
0487 200 091
 Justine L. Press
 AAMT Member 27950
 Open Daily by Appointment
16 High St Woodend

RETURNING THIS YEAR: MINI MASTER CHEF
 Starting February 3rd

- Beginners Mon / Wed 4.00 - 5.30pm
- Advanced Mon 6.00 - 7.30pm
- Teenage Tuesdays 4.15 - 5.45pm

Inquire now for March School Holiday programs

- Adults Beginners 4 week program starting April 10th 6.30 - 8.30pm

Taste of The Ranges	March 22 nd	10 - 3pm
Classic French	April 24 th / 26 th 1	1 - 2pm
Preparing Seafood	May 8 th / Sat 17 th	11 - 2pm

Private lessons and group bookings available

Contact : Erica 0458 440 733 erica@lifeandforkcookingschool.com.au
lifeandforkcookingschool.com.au



When bushfire burns, don't expect a truck at every door

If a bushfire is burning out of control, CFA firefighters must concentrate their efforts on stopping the fire. There may not be enough fire trucks and firefighters to defend every home.

In fact, there are around 42,000 people living in the Macedon Ranges, serviced by eight CFA Brigades with a total of only 25 fire fighting trucks and support vehicles. You do the math!

“CFA firefighters will be doing everything they can, to prevent injury to people and damage to property, during a bushfire. But you should never expect a fire truck in your backyard to personally protect your home,” Woodend CFA Captain Mick Christie said.

Instead, people who choose to live in a bushfire setting should prepare well in advance of a fire threat and know exactly what they are going to do.

“Often the first warning you receive of a fire approaching your property is smoke or flames. CFA firefighters can't knock on every door to give a personal warning. Don't be caught out. Prepare in advance and you can enjoy living in a bushland setting, knowing you have a well thought out bushfire survival plan.

“Never sit back and do nothing, thinking CFA firefighters will protect your house. The reality is this may not happen. Doing everything to protect your home and asset is your responsibility,” Captain Christie said.

To get ready for a bushfire, people in areas of high fire risk are advised to prepare a Bushfire Survival Plan. This is a well thought out plan about how you will prepare and respond to a fire in your area.

A part of this plan is deciding if you are going to leave early, before a fire threatens or road travel become hazardous, or stay and defend your home. Whatever your choice you need to spend a decent amount of time preparing you and your family. Five minute chats while watching the TV are not enough.

When the risk of bushfire is high, CFA will be on full alert but it isn't possible to give personal warnings to every home. Listen to your local ABC radio. Keep in contact with your neighbours. And watch for smoke. Keeping informed could save your life!

For further information contact Captain Mick Christie on 0419 870 601 or 1st Lieutenant Mike Dornau on 0409 093 935. On Sundays call the Woodend CFA on 5427 2356 or visit the station in Urquhart Street. Or you can visit our website: www.woodendcfa.org.

The Woodend CFA is a volunteer emergency service, committed to Creating a Safer Community.

Submitted by 1st Lieutenant Mike Dornau, Woodend CFA

THE NEW WOODEND STAR connecting the community



Macedon Ranges
Shire Council



Occasional Care Woodend

Take advantage of our Occasional Care service for attending appointments, shopping, study, leisure or just to have a break.



Group sizes are limited to 14 children per session and places are limited, so bookings are essential.

Term 1: Thursday 30 January to Friday 4 April 2014
Sessions: Wednesday and Thursday (Buffalo Stadium); and Friday (Woodend Community Hub)
Time: 9am to 12noon
Cost: \$22.50 per three-hour session; \$18.20 for health care card holders.

Closed on Code Red Days



Bookings: contact Council's Early Years Services unit on (03) 5422 0231.

mrsc.vic.gov.au/children

SMALL BUSINESS CAPITAL GAINS TAX (CGT) CONCESSIONS

When planning to sell an active asset from a small business entity (SBE), it is worthwhile considering whether you will qualify for any of the Small Business CGT Concessions to minimise or negate your CGT liability.

An active asset is one used in carrying on a business, such as goodwill, business premises, trade marks, franchises and licences. The asset must be active for at least 50% of the ownership period.

There are four concessions you may be able to apply:

- 15 year exemption – asset owned for 15 years and owner aged 55 years or over and retiring
- 50% active asset reduction – in addition to usual 50% CGT discount for assets held more than 12 months
- Retirement exemption – gains are exempt to a lifetime limit of \$500,000. If owner aged under 55 years the exempt amount must be paid into a complying superannuation fund
- Rollover to defer crystallisation – invest proceeds in another active asset, which can defer the CGT impact until a further CGT event occurs

If you have questions please feel free to contact Andrew Marshall or Janine Orpwood on 5427 8100 for an initial consultation.

Langley|McKimmie
Chartered Accountants
17 Nicholson Street, Woodend
www.langleymckimmie.com.au E: info@lmadvisors.com.au

Heritage News

A New Year and some New Year resolutions for our Local and Family History Resource Centre! Can you help us fulfil them? We urgently need people to assist us with our oral history collection. We need people to record interviews and we need people to add to our list of those willing to be interviewed.

Yes, we do have a mass of information from various records such as minute books and digitized newspapers to draw on when we are researching but it is amazing just how often a search of our data base for a particular name or item, leads us to our Oral History collection. At the moment this comprises over three hundred interviews, all transcribed and indexed, but we would like to double it in size. Due to a lack of interviewers, it has been at a standstill for some time and sadly some of the people we would like to have interviewed have now died, so their stories have been lost.

I am often asked about the reliability of interviews – surely people's memories can often become confused and inaccurate? My answer is, yes, sometimes they can, especially when it involves remembering when things happened but is this so important? What I believe IS important is that in these interviews, people can often tell us about things which they experienced first hand, information that is simply not be available anywhere else. Here is an example:

Mrs Bloggs tells an interviewer that she can remember going to Melbourne on the first diesel train to run on the Melbourne to Bendigo line. She can't remember exactly when it was, but she gives a detailed description of the trip and, with prompting from the interviewer, goes on to recall travelling to Daylesford when the Woodend branch line was still in operation and recalls some of the people she often travelled with. Other records will easily fill in the missing dates but her personal account is in many ways unique and her comments set us thinking about other things we need to research.

Another example: an interview with a young person describing in detail their everyday life. What an important resource this will be in 50 years time!

If you enjoy meeting people, why not call in to our Local History Centre in Forest Street on any Wednesday and discover how you can help with this important and interesting work.

Submitted by Janet Hawkins

Share the Road in The Ranges

Bike Safe Macedon Ranges with RoadSafe Central Victoria is running a community road safety campaign over the next three months. You will see signs displaying a message to "Pass Cyclists with Care" on roads throughout the Macedon Ranges. The messages also appear on posters and displays in our towns, the posters inform both drivers and riders of relevant road rules and the need to give each other courtesy and respect.



Bike Safe Macedon Ranges invites local businesses to support our safety campaign by displaying safety posters on their windows or our displays in their venues. Some businesses have already kindly committed to assisting us. Please telephone our president on 0407 759 860 if your business would like to support us in this way. Your support will be acknowledged on our active Facebook page.

Drivers, please think about how vulnerable a cyclist is when passing them on the road and give them plenty of space when overtaking. Their lives depend upon your patience and consideration. We all want to get home to our families safely.

Submitted by Margaret Douglas,
President of Bike Safe Macedon Ranges

HOME MAINTANCE & RENOVATION

**SPECIALISING IN KITCHENS,
BATHROOMS, PERGOLAS
& DECKS**

- Extensions • General Maintenance
- Preparation for Sale

Call Mark now to arrange a free quote

Reliable | Local | Professional

0411 555 925 baiame1@optusnet.com.au

MASSAGE

MASSAGE ON HIGH

All massages are charged at \$1 per min plus \$10
• gift vouchers available •

Remedial • Relaxation • Pregnancy • Lymphatic drainage • Foot massage

75 High St Woodend (Westpac Building) **5427 4419**
Open 5 days a week

30 High St Kyneton 5422 2511
Open 7 days a week

10min Neck & Shoulder \$10
20min Foot Massage \$20

members of AAMT

PAINTING

PAINTING

STONELAYING & PAVING

TRADE & SERVICE DIRECTORY

CARPENTRY

Paul Gaskin
Qualified Carpenter
0438 440 986

Decks, Pergolas
Bathrooms, Renovations
& all your carpentry needs,
throughout the
Macedon Ranges
Free quotes



paulgaskin12@yahoo.com.au

CHIROPRACTOR

Mark Brown
30 years experience

- Muscle realign & stretch techniques
- Gentle spine adjustments
- Elbows, wrists, kness, shoulders
- Headaches, migraines & athsma

Upstairs at Westpac Bank, 75 High St

Phone: 0407 526 403

CLEANING



Not enough hours in your day?
Need help managing
your home?

Stephen Farrell
Personal Services

Very reasonable rates
Through out the Macedon Ranges
Phone 0419 526 275



DRESSMAKER

Beryl's Tailoring

DRESSMAKING, ALTERATIONS,
BRIDAL, EVENING & DAY WEAR,
LADIES AND MEN'S REPAIRS



Beryl Bachelor
QUALIFIED DRESSMAKER, NEWHAM
BY APPOINTMENT ONLY
MON TO FRI 9 - 5

5427 0568 0418 510 179
berylb@vic.chariot.net.au

EXCAVATIONS

Cheap 'n' Neat - Excavations



12 mtr tipper
all excavation & bobcat work
site clean / level
concrete / rubbish removal
post hole drilling
demolition work
crush rock / sand / soil supplied

Les Toth 0418 556 634
cheapnneat627@gmail.com

HANDY MAN

HANDYMAN SERVICE

Servicing the Macedon Ranges
Honest Reliable Friendly & Local

Phone **PETER**
0431 252 477 or 5423 5282

Minor repairs	Dripping Taps
Basic Carpentry	Tiling
Fence repairs	Paving
Gardening	Painting
Mowing	Odd Jobs



HANDY MAN

JUST ASK GEOFF



Rural & Domestic
Handyman Services

0417 311 806

For all those jobs the others won't do...

HOME INTERIORS

DECORATE
with style
RENOVATE
TRANSFORM
with confidence



Present Well

Call Danielle 0400 664 231 pwhi.com.au

HOME MAINTENANCE

Home maintenance & landscaping
service including decking,
pergolas, carpentry & painting.

Stuart 0409 150 629

AH 5427 2465

METAL GATES



BVM METALCRAFT
Ben McKee
GATE AUTOMATION
OLDWORLD & MODERN STYLE
GATES AND FENCING
bvmmetalcraft.com.au
ben@bvmmetalcraft.com.au
04 222 88 768

MOVING & TRANSPORT

To The
From The
In Ranges

Mini Van Man
0408 190 728

If your job is too small for a truck & too big for a car...
Ring the Mini Van Man

Removal & Courier Service

PAINTING



Aardvark Painting
ABN: 49 178 405 936

- All Painting Works
- Associated Repairs
- Discounts Available
- Call for a Free Quote

0488 094 186 / 0488 095 186

Email: staff@apainting.com.au
Internet: http://www.apainting.com.au

STONEWORK & FENCING

Neil Turner

Stone Work Iron Work

Fences Gates

WWW.NEILTURNER.COM.AU

0409 285 256

TAXI



Your Local Taxi Service

Bookings: 9310 5422

To go in a monthly draw for a \$20 voucher
to spend next time you ride with Crown Cabs,
Send this advert to:

P.O. Box 25 Tullamarine, 3043.

TREE SERVICES



A&P Tree Services

- tree pruning / removal • stump removal
- tree planting / transplanting • rope & harness climbing
- confined space removal • fully insured

Professional commercial & residential tree maintenance
all work carried out by qualified arborist

Call Anthony **0417 059 969**

SPORTS NEWS

MACEDON RANGES running club

Macedon Ranges Running Club (MRRC) is a social, non-competitive, recreational running group located in Gisborne, Macedon, Riddells Creek and Woodend. It is a volunteer run, not for profit club with the emphasis on getting together for exercise in a relaxed atmosphere.

The platform for the popularity of the club is its Start Running Group (SRG) which guides participants to running 5km non-stop in eight weeks and 10km in thirteen weeks. The speed of running is irrelevant, it is simply your comfortable pace. The program is suitable for all ages and fitness levels by using a blend of walking with running to manage the change in fitness and ability. The SRG occurs twice a year with the first for 2014 having recently started.

We are also trialing a predominately walking group at Riddells Creek which does not have the ambition of non-stop running goals but does intersperse short periods of power walking or running (your choice). This is an ideal program for injury management or if a running goal is not desired.

For those who have the ability to run 10km we have an Intermediate Running Group (IRG) or, for those a bit quicker, an Advanced Running Group (ARG). The IRG and ARG caters for runners targeting Fun Runs or those wanting a regular run in a social and encouraging atmosphere. *With the support of Cobaw Community Health we are following the Healthy Club profile from Sports Focus and are looking forward to a great year of running. We welcome your participation. Please enquire at macedonrangesrc@gmail.com.*

Submitted by Lindsay Sharpe, President

SPORTS NEWS

Golf Clinics for Women

If you've ever thought about taking up Golf - Now is the time!

PGA Golf Professional coaches Matthew Duncan and Laurie Chew are hosting a program to introduce Ladies to the game of golf at the Woodend Golf Course. Commencing on February 12th and running for 5 weeks, this program is designed to teach Ladies all the skills to play golf regularly and to have fun amongst friends in a social and active environment.

The program will run on Wednesdays from 1.30 pm to 2.30 pm followed by coffee and afternoon tea to socialise and discuss the session. Ladies golf clubs will be supplied so you are using the right equipment to help you get the most enjoyment out of your golf.

Take this opportunity to get involved in this great game. For enquires or booking please call Matthew or Laurie on 54 282698 or 0431 137 145

Submitted by Cheryl Garner on behalf of the Woodend Lady Golfers. Phone 0408 000 946

lawyers &
business
consultants

noy
l e g a l
s e r v i c e s

lawyers

- business sales + leases
- conveyancing
- wills + estates
- commercial agreements

5426 3500 • justine@noy.com.au

macedon ranges & melbourne



Macedon Ranges Family Law

**New family law
practice in Gisborne**
All areas of family law,
separation, divorce, property
settlements, care of children,
maintenance etc

Come find out where you stand with a **free** initial
appointment

Phone: 5428 8344 email: megan@macedonrangesfamilylaw.com.au
13 Goode St, Gisborne 3437
www.macedonrangesfamilylaw.com.au

Woodend Paediatric Speech Pathology Services



81g High Street
Woodend

5427 3309 | 0419 323 095

Meta Massage

SPORTS/REMEDIAL MASSAGE, SHIATSU, REIKI
Raymond White

Telephone 0411 268 336

for an appointment

18 years experience • Chronic and acute conditions
Sports injuries • Rehab work

MUSIC AFTERNOON

Saturday, February 8
New Orleans inspired Jazz

- 1 pm to 5 pm
- \$10 entry (No's limited)
- Licensed for beer and wine (no BYO)
- Light snacks available



Bookings:
suzi@hedgefarm.com.au

HEDGE FARM 124 Three Chain Road, Carlsruhe