

# THE NEW WOODEND STAR



Circulation of 3340 throughout  
Woodend postal district, Newham, Hesketh, Ashbourne,  
North Woodend, Hanging Rock, Carlsruhe, Cobaw.



**AN INITIATIVE OF THE ROTARY CLUB OF WOODEND**

April 2012

A Monthly Community Periodical

First Publication 1997

Volume Sixteen No 3

## Mt Macedon ANZAC Dawn Service

The region's largest ANZAC Day dawn service will be held on Wednesday 25th April at the Memorial Cross at Mt Macedon.

Chairman of the organising committee, Vietnam Veteran Frank Donovan said the event has been growing in participation and stature each year, assisted by the additional 300 car parking spaces constructed over the last two years. This year's service will again hear 'Voices from the Front' – brief readings from writings penned by Australian service personnel from the earliest to the most recent conflicts. Content from the new book 'They Went to War', by local author Sylvia Boxshall and published by Woodend & District Heritage Society, will also be used. Launched on Armistice Day 2011 this book features the 271 people from the region who went to World War 1.

The traditional features of the commemoration are an Australian Defence Force catafalque party, a wreath laying ceremony, prayer and blessing, and traditional musical items performed by a piper, bugler and local singers.



While the service begins at 6am sharp, Dr Donovan urged locals to be at the cross by 5.40am at latest, rug up for cool weather, and bring a torch.

If family members wish to lay a wreath to honour a relative they should arrive early to be able to access the wreath laying area and bring their wreath forward when called after the official party.

Participants are encouraged to use the free buses, which leave from Woodend RSL in Anslow St, between 4.15 and 4.30am. For bookings phone Reg Till on 0427 187 836 or 5427 3122. Assistance is also available to transport frail participants from the car park to the Memorial Cross also by arrangement.

Scout groups from the area will also provide the traditional breakfast at the Reserve following the service.

Submitted by Bruce Mildenhall

## Woodend Winter Arts Festival Launch

*Grabowsky, Grigoryan, Gillies & Greenwood line up for 2012*

Woodend is set for a population blowout again this year over the Queen's Birthday Long Weekend in June – the star line up secured for the Woodend Winter Arts festival guarantees it!



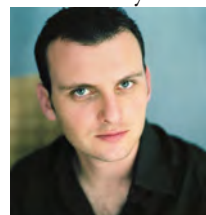
*Paul Grabowsky will feature in 'Flavours of Jazz' at Braemar's Jackson Hall*

The program unveiling on the 26th of March has revealed that the 2012 Festival will open with the traditional big bang fireworks, followed by a 'Flavours of Jazz' performance by names synonymous with the best of jazz. Paul Grabowsky on piano, with Julien Wilson on sax, will perform at Braemar's Jackson Hall with dinner prepared and presented under the careful direction of Damian Sandercock of the Piper Street Food Co.

All that jazz will be followed by a program packed with the very best of classical music by composers Schubert, Beethoven, Vivaldi, Mozart and Haydn. And a very special performance of Scarlatti and Handel in Cantatas of the Arcadian Academy will include the inimitable talents of Max Gillies opposite Barry Jones, directed by the multi talented WWAF Festival director, Jacqueline Ogeil.

And while Phryne Fisher's appearances are restricted to ABC 1 and the pages of a series of 18 books, her creator are not. Kerry Greenwood who has featured Ballarat, Castlemaine and Melbourne as settings for her works – which include more than 50 novels and six non fiction books will join the Festival this year.

This year will host two panel events. One centred around the migrant story featuring authors Arnold Zable, Alice Pung and Andreas Litras; the other examining the idea of the 'Australian Dream' with George Megalogenis, Jeff Sparrow and Lindsay Tanner.



*Slava Grigoryan, guitar virtuoso*

The Australian musical contingent will include the return of composer and pianist Ian Munro and the debut highly sought after guitar virtuoso, Slava Grigoryan, who shot to fame in his teens after winning the Tokyo International Guitar Competition. Rising stars of the

*continued on page 2*



**Grantra**  
HOME IMPROVEMENTS  
Specialising in Bathroom Renovations

PO Box 736, Woodend 3442  
**0418 175 877**  
www.grantrahomeimprovements.com.au

Master Builder  
REGISTERED Building Practitioner

## The New Woodend Star

An initiative of the Rotary Club of Woodend Inc.  
The Bank, 75 High Street, Woodend, Vic. 3442  
ABN 32 685 225 161 No. A0021518E

Layout & printing by Collier Office & Business Assist  
**EMAIL articles preferred: sales@collieroffice.com.au**

*Circulation: 3340 copies throughout Woodend and district*

Disclaimer: Articles and comments published in this newspaper are the result of contributions from local groups and relevant news articles pertinent to the Woodend district. Neither the Rotary Club of Woodend Inc., The New Woodend Star nor the editorial team are liable for any mistakes, omissions, or misprints. It prints and makes no representation as to the truth or accuracy of any description, and accepts no liability for any loss suffered by any person who relies on any statement contained herein. The opinions expressed are not necessarily those of the editorial team. The committee reserves the right to omit, reject, cut, alter or otherwise re-work submitted articles to make them suitable.

Committee: Barry Napthine, Ivor Johnson, Claudia Green, Brendan Watters, Alexia Downie, Sue Macklin & Jane Watters

### Closing date for inclusion of articles or advertising for each issue is the 15th of the month prior to publication

### Information for Advertisers

Prices for advertising 2012 All rates include GST & are priced per month.

**Business card** (55mm x 90mm) .....\$52 inc GST  
**Trade Page** .....\$38 inc GST  
**Quarter page** (90mm x 134mm) .....\$105 inc GST  
**Half page** (134mm x 190mm).....\$198 inc GST  
**Full page** (190mm x 277mm) .....\$338 inc GST  
**Insert** (of your printed brochure).....\$246 inc GST

Advertisers: please note – it is in your interest to book and pay for a year in advance, as a 10% discount applies to any full year pre-paid booking. Any existing pre-paid ads will revert to the new rate on completion of the pre-paid period.

Advertising bookings to be made with Alexia Downie on 5427 3092 or sales@collieroffice.com.au. Accounts queries can be made to Sue on 5427 4089 or nws@johnsonwoodend.com.au Mail should be directed to: New Woodend Star, C/- The Bank, 75 High Street, Woodend 3442.

#### Woodend Star Publication Dates for 2012

May	April 30 <sup>th</sup>	September	September 3 <sup>rd</sup>
June	May 28 <sup>th</sup>	October	October 1 <sup>st</sup>
July	July 2 <sup>nd</sup>	November	October 29 <sup>th</sup>
August	July 30 <sup>th</sup>	December	December 3 <sup>rd</sup>

Changes to advertisements, new advertisements or cancellations must all be made by email or in writing. All advertisements will be placed and charged for until notified otherwise.

#### SUBSCRIBE TO THE NEW WOODEND STAR

Do you live outside the New Woodend Star distribution area? Be sure to receive your copy every month by subscribing. A yearly subscription of 11 issues is just \$34.50. Post to New Woodend Star, C/- The Bank, 75 High Street, Woodend 3442.

Name: \_\_\_\_\_  
Address: \_\_\_\_\_  
Phone: \_\_\_\_\_ Enclosed: Cheque/Money Order for \$34.50

Continued from page 1

Australian classical music scene – Robert Macfarlane (tenor), Siobhán Stagg (soprano), Lotte Betts-Dean (soprano), Leigh Harrold (piano) will feature in a variety of performances, including with Ensemble Gombert and Accademia Arcadia. Tinalley String Quartet – widely regarded as one of the world's most exciting young Australian quartets – will perform with award-winning cellist Josephine Vains.

International artists selected for this year's program include the Osmosis Wind Quartet (The Hague) and the Italian Davide Monti, exclusive to WWAF– who will perform a perennial favourite Vivaldi's Four Seasons with Accademia Arcadia.

The packed literary and arts program features comic and freelance artists, yarns at the pub, one of the last public showings of exhibitions from the Dromkeen Collection, Macedon Ranges Potters and the Mt Macedon Artists, a schools program and free events for children.

For tickets and the full Festival program, go to www.woodendwinterartsfestival.org.au or phone 0428 271 272.

Submitted by A.House for WWAF



**Lachlan Fleming**  
**CONSTRUCTIONS**  
SERVICING THE MACEDON RANGES  
**0401 499 898**  
EXTENSIONS  
RENOVATIONS  
NEW HOMES

REGISTERED Building Practitioner  
Master Builder



Feel sensational at The Spa

Our team of professional and passionate therapists can assist you with all of your needs... From essential waxing to purely indulgent facials, massages, body treatments and more, we are here 6 days a week.

**The Spa**  
Beauty Therapy Centre

Gisborne | 3/31 Brantome St Gisborne 3437 | 03 5428 8800  
Woodend | 41 Anslow St Woodend 3442 | 03 5427 3322  
www.thespa.com.au

## CASTLEMAINE—GISBORNE CLEANING SERVICE

CHRISTINE ADAMS, FRYERS ROAD, ELPHINSTONE 3448

**Carpet Cleaning Specialists**  
**Duct Cleaning, Window Cleaning, etc.**

**For all your cleaning requirements**

- no job too big or too small -  
obligation-free quotes

Tel: 5473 3307 Fax: 5473 3310

**Mobile: 0419 006 591**

## Harvest the Wind Fundraising Dinner

Redbeard Bakery is hosting a Harvest the Wind fundraising dinner for WISEgroup as part of the Daylesford Macedon Produce Harvest Week Festival (27th of April to 6th of May)

- Meet Martin May, Director of the Hepburn Wind Farm, for an optional tour of the site near Daylesford (weather permitting).
- Travel (in own transport) to RedBeard Historic Bakery in Trentham for the rest of the evening.
- Dine on platters of local organic produce - dips, roast/pickled veg, cold meats, and RedBeard sourdough - followed by dessert.
- Enjoy a complimentary glass of wine or beer. Additional drinks / coffee / tea at cafe prices.
- Listen to live music from Woodend singer-songwriter David Juriansz.
- Learn more about Hepburn Wind from Martin in his after dinner speech. A representative from Woodend Integrated Sustainable Energy (WISE) will then explain their proposal for Woodend.

On Saturday, 28th of April, starting at Hepburn Wind Farm (at 5.30pm), then RedBeard Historic Bakery (from 6.30pm until late). For bookings: Telephone 0412 219 093 or email to [marketing@redbeardbakery.com.au](mailto:marketing@redbeardbakery.com.au)

Tickets are \$60 per person, includes a donation to WISE to support the development of the Woodend Community Wind Park project. Must be paid at time of booking, by credit card or cheque / money order.

Visit any of these websites for further information

- [www.redbeardbakery.com.au](http://www.redbeardbakery.com.au)
- [www.wisegroup.org.au](http://www.wisegroup.org.au) )
- [www.hepburnwind.com.au](http://www.hepburnwind.com.au)
- [www.dmproduce.com.au](http://www.dmproduce.com.au)

Submitted by Rebecca Colless

## Woodend Rainfall Report 2011

Each month we add the rainfall details and the year to date total. Our rainfall report shows, 2005, 2006 2007 2008 2009 and 2010 comparisons. Please note that your own rainfall readings may not exactly match these.

	2007	2008	2009	2010	2011	2012	
January	83.5	17.1	0.08*	54*	227.5	31.	Jan
February	27.4	22.1	2.5*	71.5*	115.0	133	Feb
March	35.7	25.4	42.5*	121*	35		Mar
April	20.2	20.4	51*	45	63.5		April
May	95.7	43.7	30.5*	39	73.5		May
June	105.1	88.7	66.5*	98.5	69		June
July	83.3	112.5	76.5*	87.5	82.5		July
August	34.8	52.2	107.5*	148.5	56		Aug
Sept	49.8	42.0*	88.5*	97	98.5		Sept
Oct	12.1	13.0*	46*	154.5	86		Oct
Nov	91.0	67.2	99*	193	82		Nov
Dec	101.2	96.0*	60*	93	120		Dec
<b>YTD:</b>	<b>739.8</b>	<b>600.3</b>	<b>670.5</b>	<b>1202.5</b>	<b>1119.5</b>	<b>164</b>	<b>YTD</b>

For the year of 2011 there was rainfall of

**1119.5mm**

1 inch = 25.4 mm therefore the total year 2011 is 44.07 inches

## Macedon Ranges Mother's Day Classic

*Raising Money for Breast Cancer Research*

This year we are excited to launch the inaugural Macedon Ranges Mother's Day Classic, as part of the nation's largest fun run/walk that raises money for breast cancer research.

Breast cancer is the most common cancer affecting women and touches the lives of people all over the country. On Sunday 13th of May, gather your friends and family and join more than 120,000 people Australia wide who will participate in either a walk or run to raise money to help find a cure for this insidious disease. Both the walk and run depart from the Woodend Children's Park. For full details and online registration visit [www.mothersdayclassic.com.au](http://www.mothersdayclassic.com.au), or register on the day. Other queries or if you would like to volunteer to help on the day, please contact Kristina Nelson 0448 355 535.

Submitted by K. Nelson

**The New Woodend Star Committee and the Rotary Club of Woodend wish all our readers and advertisers a Joyous Easter.**



feeling **FRAMED**

bringing art to life

**Custom picture, artwork, tapestry and memorabilia framing, professionally and economically performed in-house**

*A comprehensive range of Art supplies at very competitive prices*

- Pencil & paint by numbers sets for youngsters
- Artist's quality brush and paint sets for the more experienced
- Matt boards and mounts for artwork presentation
- Books & magazines for the art enthusiast, or those just wanting a good read

43 Anslow Street, Woodend – 5427 4455

Next to the post boxes  
[feelingframed@bigpond.com](mailto:feelingframed@bigpond.com)

## The beginning of the new story

“Oberammergau” is the Passion Play held in a small German town once a decade, and it’s world famous – one of those “once-in-a-lifetime” events. Films and books are also prolific telling the story of Jesus’ life in many different ways, according to the Director’s interpretation. And yet, something is lost in the process of trying to transfer the Bible onto the screen.

Often, the resurrection is put in the “too hard” basket, so it’s either omitted or merely alluded to, and so we end up with a slanted version of the story that ends at the cross.

Without the resurrection, the film or play would not have been made, because it portrays Jesus as merely mortal – just another one of us who led an exceptional life, but without the “God becoming human” part.

The fact that Jesus is still worshipped and adored and followed after 2000 years by millions around the world in 2012 is surely a sign that he was more than mortal – indeed divine as well as human – and is still alive and knowable and relatable today! So why chop off the ending that makes sense of the whole?

Certainly, Jesus died on the cross and was buried. And certainly, he rose to life again on that third day, showing he’s stronger and has power even over death itself.

For the average Aussie, Easter ends on Easter Day, whereas that’s only the beginning! In the Church community, the resurrection is celebrated for another 40 days, as would be expected with such a tremendous and mind-boggling event. It’s not something the disciples could come to terms with in minutes and hours – it took months and years for them to fully appreciate and interpret what they had personally witnessed.

Yes, it does take faith and decision-making, but a mere mortal would have been forgotten about within a generation or two, whereas we even count our years from Jesus’ birth.

Whether or not we believe that Jesus is the Son of God, history forces us to make a decision about him for or against – he wasn’t impressed with fence-sitters!!

A happy and thoughtful Easter to you all!

Fr Malcolm Thomas, St Mary’s Anglican Church, Woodend  
See page 29 for Easter Service times

## Woodend Red Cross

The next meeting of the Woodend Red Cross Unit will be held on Thursday May 3rd at 1.30pm at 39 High Street. Please feel free to come along to our meeting and find out about what we do.

Submitted by M.Hocking

## BEAUTY IN TOUCH

Classical Beauty Therapist – Kerry Robinson

- Deep Cleansing Facials ▪
- Waxing ▪ Manicures ▪ Pedicures ▪
- Eyelash tinting ▪

Please call 0412 479 901 for an appointment  
40A South Road, Woodend

## "A" Class Solar Systems

**SAVE \$500 - \$1000<sub>PA</sub> ON  
YOUR ELECTRICITY BILLS**

**LIMITED STOCK AT A GREAT PRICE from  
only \$3,500 for a Quality SOLAR ELECTRIC  
BOOSTED HOT WATER SYSTEM**

### • Evacuated Tube Systems

- Frost Free
- Rebates Available
- Free Quote

**0407 511 836**

Lic.No 31389



Even **SUPERMUMS**  
need a day off.  
Give her the gift of  
relaxation with our amazing  
\$99 ‘Mother’s Day’ package  
deal.

She is always there for you when you need it most. Show her how much you appreciate her. Book her in for this fantastic package Alissa Kate Salon & Spa is offering and give your Supermum a well deserved day off.

For just \$99, book her in at Alissa Kate Salon and Spa for the following treatments:

- Professional style cut valued at \$87
- Anti Ageing Facial valued at \$89
- Moisturising hair masque valued at \$34
- Relaxing 10 minute scalp massage valued at \$15

**only  
\$99**

That’s a total of \$203  
of value for only \$99!

But HURRY, this offer is limited  
to the first 29 bookings!

**Our guarantee:** If your mum **Call Alissa Kate Salon & Spa**  
doesn’t leave our salon feeling **on 5427 3822 NOW**  
recharged and relaxed, we’ll  
refund your money in full!

Alissa Kate Salon & Spa, 3/115 High St, Woodend

## Carlsruhe Community Corner

### 175th Anniversary History Day

Carlsruhe will be 170 years old on Friday the 25th of May.

The Community will hold a celebration of the anniversary on the weekend of the 26th and 27th of May. A flyer has been sent to all Carlsruhe residents. For further information email [carlsruhecpg@hotmail.com](mailto:carlsruhecpg@hotmail.com)

Anyone with any photos, stories, memorabilia, etc could you please let us know about them and allow us to share them over this period. We would like as many people as possible to attend. All welcome. View our website for further information [www.carlsruhe.com.au](http://www.carlsruhe.com.au)

### Diary Dates

- Landcare Group meeting is on the April 2nd at 7.30 pm
- Community Planning Group meeting is on April 3rd at 7.30 pm.

All community members are welcome to attend.

Submitted by Margaret Glen

## Greylight "Olde Time Dance"

*Kyneton Town Hall Wednesday 2nd May, 2012 1.30p.m. to 5.00pm*

One for the more Senior locals, this is a police initiated event ran with the assistance of Macedon Ranges Shire. The first "Greylight" to be held in the Macedon Ranges Shire, entrance is free, with light refreshments available. Enjoy music from the "Police Show Band"

Please RSVP by 16th of April, 2012 – Call Holly Clinton on 5422 0250 or email [hclinton@mrsc.vic.gov.au](mailto:hclinton@mrsc.vic.gov.au). Please register as limited seats available. Transport available on request at time of registration

Submitted by Leading Senior Constable Marciniak, Kyneton Police Station. Phone 54 212 900

## Woodend Rotary holds Lunch for Fitness

The Rotary Club of Woodend will be holding another Luncheon on Sunday 29th of April from 12 - 2:30 pm. This event has been held for the past 4 years raising funds for various community projects and this time the funds will be put towards the building of a fitness track in Woodend.

The fitness track project has been a long term plan of the Rotary Club and will follow the old Woodend racetrack incorporating exercise stations along its length linking with the current track along Five Mile Creek. The planning for the track is well underway with significant funds already being allocated to the project by Rotary, with Council support. Woodend Rotarian Brendan Watters has spent the last year gaining support from Council and other agencies to develop the project. "Support from community and local business will help ensure the various stages of the project are completed in a timely manner and I encourage everyone to attend. This will be a fitness and exercise area for everyone in the community to enjoy", said Brendan.

More information on the Fitness Track project will be provided at the luncheon.

The cost is \$25 and everyone who attends will enjoy champagne and the savoury and sweet treats on offer.

All luncheons attract good attendance and it is preferred that people book a place by contacting Melissa Hocking on 5427 1578. Melissa will also provide details about the venue. "We are holding this luncheon on a Sunday to give those that cannot normally attend the weekday luncheon an opportunity to support this event", said Melissa.

For information on Woodend Rotary Projects or membership please visit our website [www.rotarywoodend.org.au](http://www.rotarywoodend.org.au).

Submitted by J. Watters for Rotary Club of Woodend



# WOODEND COMPUTER SERVICE

Sales - Service - Training & Help

THE BANK - OFFICE 3 - 75 HIGH ST WOODEND  
JASON JOHNSON - 0400528129  
[pcs@live.com.au](mailto:pcs@live.com.au)

You have Questions  We have Answers

**CHINKA (HEP) STEEL** - Your "One Stop" Legal Shop

**Expert Advice Available**

- \* Family Law—who gets what?
- \* Been charged by the Police?
- \* Conveyancing - avoid the traps!
- \* Need a Parenting Agreement?
- \* Need a Co-habitation Agreement?
- \* Executor responsibilities?
- \* Been left out of the Will?
- \* Buying/Selling a Business?
- \* Do you have a current Will?
- \* Are you a Victim of Crime?

**Ph: 03 5427 2477**  
74 High St Woodend  
[chinka@chinkasteel.com.au](mailto:chinka@chinkasteel.com.au)

[www.chinkasteel.com.au](http://www.chinkasteel.com.au)

Visit our website for information on various areas of law, useful links, downloadable brochures, plus much more!

## Quality Blinds at factory direct prices

- Sunscreen/Blockout Blind
- Automated Blinds
- Exterior Awnings
- Latest Styles/Fabrics/Colours
- Roller/Roman Blinds/Venetians
- Professional Installation Team

Ring Now for a **Free** In House Consultation/Quotation

Mark 0437 759013      Simon 0458 338995

*Contemporary Blinds*  
*Where Style is Affordable*

## Private Childcare

*Have your child cared for in a loving home environment*

- Full & Part time positions available
- Excellent references available

Woodend area  
**0412 460 578**  
Police check & First Aid certified

## Al Pal entertains Woodend Primary School Students with his Magic

The Junior Unit students of Woodend Primary School enjoyed a variety Show "A Slice of Vaudeville" on Wednesday 14th of March. Alan Sloggett kept his audience enthralled with his comedy, magic, puppets and ventriloquism. The children were spellbound watching a rabbit turn into a bird and then white doves disappearing and reappearing in the most unlikely places. Alan then drew a face on a whiteboard and not only did the eyes start to move back and forth but the mouth started to talk as well. Two large ventriloquist puppets called Sunshine and Barney the Rabbit almost stole the Show until he proceeded to blow up balloons to make familiar animal sculptures. Alan then went onto juggle both balls and batons as part of his comedy routine.



*Al Pal entertains students at Woodend Primary School*

Positive messages such as healthy eating, playing nicely, the importance of friends and being a friend were all explored in various segments of this entertaining show. Back in our classrooms many children were heard to say, "When I grow up I'm going to be a Magician!" The children and staff thoroughly enjoyed the show.

Submitted by Joan Buchanan

## Macedon Ranges Film Society

In February, the much-loved film "Some Like It Hot" starring Marilyn Munro, Jack Lemon and Tony Curtis was a fabulous curtain-raiser. This was followed in March by Milos Forman's film version of the musical "Hair". Made in 1979, it highlighted the division of opinion over America's involvement in the Vietnam war and focussed on the tendency of young men to grow their hair long as part of their rebellion along with setting fire to their draft notices. This highly successful musical originally premiered on Broadway in 1968 and in London ran for an impressive 1,997 performances.

The film for next month is Peter Jackson's "Heavenly Creatures", a darker theme admittedly but one which is acted with great sensitivity by Melanie Lynskey and Kate Winslet in her screen debut. This film, which deals with a true life event in New Zealand in 1953 and 1954, will be shown at the Woodend Community Centre at 7 p.m. on Wednesday, April 11th.

The Macedon Ranges Film Society meets on the second Wednesday of every month at 7 pm in the Woodend Community Centre. Film notes are supplied and for those who wish, there is some discussion over supper about the film afterwards. Email [mrfilmsociety@gmail.com](mailto:mrfilmsociety@gmail.com) or call Vicki on 5427 2323 or Christine on 5429 5452.

Submitted by Colin Fox

## Central Victorian Atheists & Freethinkers Gathering

Freethinkers from Woodend and surrounding areas will be gathering again on Wednesday 18th of April, upstairs at the Albion Hotel, 41 Mollison Street, Kyneton. The Gathering is open to all freethinkers, agnostics, atheists, humanists, rationalists and skeptics from the Central Victoria area. Participants arrive from 6:30 pm onwards for a meal if desired and the meeting proper gets underway at 7:30 pm. All of similar mind are invited to join with freethinkers not only from Woodend, but from Gisborne, Lancefield, Kyneton, Castlemaine, Heathcote and Bendigo and places in between. The Gatherings take place on the third Wednesday of each month and discuss a specific topic, often introduced by a guest speaker.

For further information contact Ian Robinson on 0407 24 00 24



Nature's Garden now stocks the wonderful range of Zeally Bay organic sourdough breads. Breads are delivered fresh every Tuesday, Thursday and Saturday

Call in and see our extensive 100% organic range at Shop 4A Collier St, Woodend (cnr Anslow St) or call 5427 4406  
[www.naturesgarden.com.au](http://www.naturesgarden.com.au)

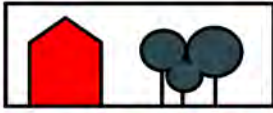
Naturally, better products



Martin Beaumont

PHONE 03 5427 4478  
MOBILE 0414 274 988  
HTTP [www.magneticwebsites.com.au](http://www.magneticwebsites.com.au)  
EMAIL [martin@magneticwebsites.com.au](mailto:martin@magneticwebsites.com.au)

Developing websites for the Macedon Ranges and beyond, ask how we can help you get online



**TOWN & COUNTRY**

**Woodend Produce Store**

31 Brooke St, Woodend

**03 5427 2753 ELGAS**

*Poultry, Stock & Horse Feeds,  
Hay, Grain, Chaff, Pet Food,  
Fencing, Pine Sleepers & Poles,  
Concrete, Electric Fencing,  
Tanks, Oils & Lubes  
Irrigation, Garden Tools,  
Potting Mix, Pea Straw, Fertilizer,  
Herbicides & Much More!  
Elgas LPG Deliveries  
**We fill BBQ Gas Bottles***

*Come in and see what we've got!*

*Open 7 days*

*Monday- Friday 8.30 - 5.30*

*Saturday 8.30 - 4.00*

*Sunday 9.30 - 2.00*

ADVERTISEMENT

**Donna Petrovich MP**

State Member of Parliament for Northern Victoria Region  
Parliamentary Secretary for Sustainability and Environment

**Working for the  
Macedon Ranges  
Community**

*Your Community Voice*



☎ 5782 2011  
84 Sydney Street, Kilmore  
✉ donna.petrovich@parliament.vic.gov.au

Authorised by D Petrovich, 84 Sydney Street, Kilmore.

## Woodend Library News

Attention all gardening novices and gardening enthusiasts! Woodend Library has brilliant resources to inspire and guide your gardening pursuits. We have books in our collection covering a broad range of topics, including:

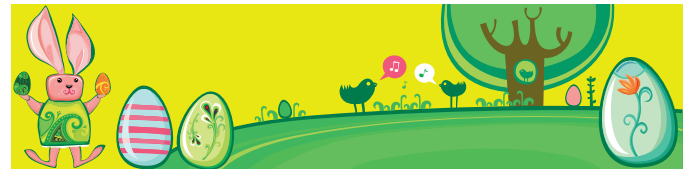
Gardening history; Perfumed gardens; Companion planting; Garden design and ornamentation; Handbooks on what to plant where and when; Horticultural information resources; Propagation and cultivation; Native gardens; Edible gardens, Cottage gardens; Container planting or Landscaping. What ever your gardening interest, we've got something for you.

We also house a wonderful collection of books on sustainability, this collection was initially donated by Woodend Rotary Club.

Woodend Library and branch libraries throughout the Goldfields area also collect a vast number of magazines on gardening and sustainable living, all of which can be reserved from our online catalogue.

Everybody is welcome, our friendly staff are available to assist with searching and/or reserving your titles. Woodend Library, corner Forest and High Streets, phone 5427 2074. or view our website [www.ncgrl.vic.gov.au](http://www.ncgrl.vic.gov.au)

Submitted by Lulu Cockram, Woodend Library Manager



LET **TONY'S PRACTICE** CARE FOR YOUR PET



**HAVING  
A BAD  
FUR  
DAY?**

- Professional grooming services for all breeds of dogs, cats and rabbits.
- A full range of grooming services available.
- All services include blow drying, nail clipping, earcleaning and an anal gland check.

**10% off**

all grooming booked in April 2012.  
YOU MUST MENTION THIS AD TO RECEIVE DISCOUNT.

**GROOMING @  
TONY'S PRACTICE**

WOODEND VETERINARY CENTRE

Corner Wood & Brooke streets Woodend | [www.tonyspractice.com.au](http://www.tonyspractice.com.au)

**Phone: 5427 9200**



## Woodend Art Market

Following on from the successful Christmas Market, the members have decided to hold an Easter Market in the clubrooms, at the Woodend Railway Station.



*Oil painting that will be hanging at Woodend Art Group's Easter Market, by Margaret Morgan*

The rooms will be open from 10 am to 4 pm on the Saturday, Sunday and Monday. If cold, visitors will be greeted by a welcoming fire, a cup of coffee and of course, smiling faces. Framed and unframed works will be on display and of course, everyone is welcome to come along and browse.

Submitted by Margaret Morgan for Woodend Art Group

## Woodend Landcare

One of the challenges of an urban Landcare group is meeting the range of expectations the community has for our natural environment. Our group works mainly on public land in the township of Woodend and most people seem to agree that we have been doing a great job. But there is a balancing act when it comes to removing weedy species and replacing them with indigenous plants.

Basically people tend to either favor the "neat and tidy" approach or the "indigenous only" approach. The truth is that in an urban area, we need a blend of these approaches.

If we try to keep the grass short, we run the risk of killing many small indigenous wildflowers. If we try to eliminate all non-native plants and return the area to its pre-European state, we are doomed to failure. We live in a town. It is a highly modified environment. There are compromises we all have to make.

The reality is that we need to have some "neat and tidy" areas for recreational pursuits, but we also need to protect the best areas of the surviving indigenous species. We need to look closely at various areas and act appropriately.

Apart from protecting pockets of local plants, Landcare also assists in conservation by planting thousands of extra plants and then trying to protect them from invasive weeds. If we allowed the worst of the introduced species to survive unchecked, many of our indigenous plants would fail to compete and there is the possibility of extinctions.

So we try to identify the most threatening weeds, things like Blackberry, Gorse and Broom as well as some trees such as Willows and direct our efforts into controlling those threats without being obsessively "indigenous".

Recently a Woodend resident expressed surprise that I had lots of non-native garden plants. He thought that Landcare people were purists who only grew native plants. The truth is that most Landcarers see a place for plants from all parts of the world as long as they don't pose a threat to our indigenous flora.

Submitted by Peter Yates

NEW  
range

## SUSTAINABLE

alternatives  
to everyday office products

With an extended range of recycled and recyclable office products and copy paper, there's no easier way to GO GREEN with out compromising on quality.



for  
Work, Home or School

"I'm bored, Mum!"  
When you hear those  
three dreaded words  
in the coming weeks,  
don't despair!

KIDS  
activities

Entertain your tribe with



Range includes:  
Craft paper  
Colouring pages  
Paint a Piggy  
Window Markers  
Activity Sets

Buy 2 **SAVE 20%**



CATERING FOR ALL YOUR BUSINESS NEEDS  
Printing

Office products

Administrative services

P 5427 3092

E print@collieroffice.com.au

A Shop 5, 130 High Street Woodend



## Construction Training International

Construction Training International (CTI) is a Registered Training Organisation (RTO 7107) offering training and assessment in:

### WorkSafe (High Risk Work)

Courses include:

- Dogging
- Rigging
- Scaffolding
- Tower Cranes
- Mobile Slewing & Non Slewing Cranes

### Earthmoving & other training

Training in a broad range of **Plant & Equipment (including Earthmoving)**. Other courses include: Spotters, Working at Heights, Pre Cast Panel Erection, Verification of Competencies and many more.

A full list of courses on offer, along with course outlines, can be found on the CTI website.

### Recreational Boat & Personal Water Craft Courses

CTI regularly offers Boat & PWC courses. Successful participants receive a Boat/PWC Certificate.

Construction Training International offers quality training provided by accredited trainers with industry experience. Our purpose-built facility and onsite equipment ensures maximum contact time for the trainee. **Contact the friendly team at CTI for bookings or more information.**

1164 Kilmore Road, Riddells Creek Vic. 3431

P: 03 5428 6790 F: 03 5428 6317

E: [constructiontraining@bigpond.com](mailto:constructiontraining@bigpond.com)

W: [www.constructiontraining.com.au](http://www.constructiontraining.com.au)



E: [constructiontraining@bigpond.com](mailto:constructiontraining@bigpond.com)

W: [www.constructiontraining.com.au](http://www.constructiontraining.com.au)



## Environmental issues in the Macedon Ranges

Open Meetings on Public Issues - Victoria Hotel April 22nd 2-4 pm

This is the first in a series of meetings where the idea is to have an open discussion on issues of community concern. The discussions begin with our physical environment. To this end, speakers have been invited from local organisations to come and give brief snapshots of their work on environmental matters. After a couple of these presentations a moderator will co-ordinate a civil discussion. In the spirit of the occupy movement there are no prescribed actions required. This is about us sharing concerns, information and making contacts with like-minded people.

Speakers will come from:

- Woodend Integrated Sustainable Energy (WISE) is a not for profit association registered for assisting communities to take responsibility for their energy and carbon future.
- WISE is the energy project team of the Macedon Ranges Sustainability Group. Our focus is on developing and providing community ownership of renewable energy generation and other sustainable activities across the district.
- Woodend Landcare and its predecessor 'Friends of Five Mile Creek' have been active in Woodend for more than 20 years. The group have done an enormous amount of work along the creek and run approximately 10 planting / maintenance / activity days each year.

The discussion will have few limitations other than time. The range of issues could include: weeds, protection and regeneration of indigenous plants and animals, domestic and agricultural water usage, grey water and septic runoff, forest management issues, sustainable local power generation, local food production ( the whole food miles thing), waste management, our individual and collective greenhouse footprint...

So as you can see it could be a wide-ranging discussion. Will we solve these issues that Sunday? Probably not. Will we get to know others who share our concerns? Definitely. Come and join in.

Convened by Woodend ALP, Submitted by B. McDonald

**POLARIS**  
Financial Services Pty Ltd  
[www.polarisfp.com.au](http://www.polarisfp.com.au)

Do you have one of the following **Defined Benefit Super Funds** and are nearing age 55:

ESSSuper (New & Revised)	CSS (Commonwealth Super Scheme)
PSS (Public Sector Super)	Uni Super
Health Super	Qantas Super
Telstra Super	State Super (NSW)

Members of these funds have specialist strategies they may be able to access from age 55 without having to stop working. These strategies could allow you to access a pensions and in some cases lump sum payments before you stop working.

**Access to a regular pension from your super in addition to your salary could:**

- Allow you to save more to super without reducing your take home pay!
- Allow you to reduce your work hours so you can work part-time until retirement!

**Access to a lump sum payment from your super could:**

- Help you pay off your home sooner!
- Provide funds that you could gift to your children to help them buy their first home!
- Complete those renovations you have been waiting to complete for so long!
- Ultimately, you could potentially bring your retirement closer!

**Anneliese has extensive experience in advising on All types of Defined Benefit Funds. Don't miss out on understanding all the benefits you may be able to access.**

To arrange an initial Free consultation , please contact

**Anneliese Willmott**

**Office: 50 Urquhart St Woodend Call 5427 3330**

Corporate authorised representative of Australian Financial Services Ltd AFSL 297239

ABN 50 116 900 362

**Kwik Kerb**  
CONTINUOUS CONCRETE EDGING  
BY RECYCLED MACHINE

Specialising in:  
CAR PARK KERBS • ASPHALT EDGING  
GARDEN EDGING • VARIOUS PROFILES  
REPAIR WORK

IAN  
0409 443 036



## News from Newham

Our Annual Garage sale will be held on Saturday 21st April at the Newham Hall from 8.30am to 3.30pm. with drop off day on Saturday 14th April between 9am and 12.30pm. Please start collecting your goods for sale in good and clean order.

Our many groups continue to thrive such as the walking group that depart from the Hall on a Tuesday at 9am for a healthy wander in the area. Dogs on leads welcome. The Newham Community Singers under the guidance of Charlotte Roberts meet on a Tuesday evening at the Hall. New members always welcome, contact Sandy on 0412 655533.

Our hall is perfect for many occasions such as birthdays, children's parties, weddings and our booking officers, Nick Massie on 5427 0065 or Beryl Bachelor on 54270 568 would be happy to help. Through the Shire Council a flamenco guitarist performed at the Hall on Friday 16th March and other shire events are planned.

Submitted by Mary Martin

## O'CALLAGHAN BROS FIREWOOD Supplies

- ▲ Split redgum firewood pick up or delivered
- ▲ Bagged kindling available
- ▲ Public weighbridge

**OPEN 7 DAYS**  
28 SAUER Rd NEW GISBORNE  
5428 1955 0488 957 090



**LEADING HAND CARPENTRY**  
COMPLETE BUILDING SOLUTIONS

· quality workmanship · effective project management  
· new homes · extensions · renovations



**REGISTERED**  
Building Practitioner

Call 0439 360 896 or email  
shannon@lhcarpentry.com.au



**FAIRHURST CONVEYANCING**  
and Secretarial Services

For all your  
**Property Transfers**  
Ring Sue Fairhurst on

**5427 2382**  
27 Urquhart Street, Woodend  
MVCA & AIC

## Easter

When Billy Graham was driving through a small southern town, he was stopped by a policeman and charged with speeding. Graham admitted his guilt, but was told by the officer that he would have to appear in court.

The judge asked, "Guilty, or not guilty?" When Graham pleaded guilty, the judge replied, "That'll be ten dollars -- a dollar for every mile you went over the limit."

Suddenly the judge recognized the famous minister. "You have violated the law," he said. "The fine must be paid--but I am going to pay it for you." He took a ten dollar bill from his own wallet, attached it to the ticket, and then took Graham out and bought him a steak dinner! "That," said Billy Graham, "is how God treats repentant sinners!"

The Message Bible puts it this way: "Become friends with God; He's already a friend with you.

How? You ask. In Christ. God put the wrong on Him who never did anything wrong, so we could be put right with God." 2 Corinthians 5:20-21

Easter reminds us that Jesus paid the penalty for 'all' of our wrong doings, so that we could be friends with a Pure Loving God.

Q. What do you have to do to receive this wonderful gift of a new start in Life from God who loves us so much?

A. BELIEVE – John 3:16

Sunday Service times: 10am & 6pm

(NB – No evening service Easter Sunday)

Pastor Marilyn Hunter - Senior Pastor - 'Living Word' Christian Church 5429 6327

## Hypnotherapy



**Past life regression**  
**Weight management**  
**Stop smoking now**



Jahne Hope-Williams is available  
for private consultations

Call today...

Ph: 5427 3518 or 0402 088 170 (text message only)

Enquiries: [yogafirst@netcon.net.au](mailto:yogafirst@netcon.net.au)

[www.restorativeyogatherapy.moonfruit.com](http://www.restorativeyogatherapy.moonfruit.com)

**MASSAGE WITH JAHNE is back**

**"The MASSAGE BAR" at Yoga First**

Bowen, PPT, Relaxation, Reflexology, Therapeutic

**Monday Tuesday Wednesday & Fridays**

**After Hours by appointment**

Director: Rev. Acharya Jahne Hope-Williams AHA (USA and Aus)

## Woodend Neighbourhood House

The Easter holidays are upon us once again.- we are offering activities across the two weeks rather than all in the first week. If your children need a reason to get out of the house they can try paper making, card making, glass fusing, chakra dance or art. For full details see your school newsletters, Coles notice board or our website.

After our recent AGM we would like to thank our outgoing committee members and welcome in our new Committee of Management. We are mindful that the Neighbourhood House exists to meet the needs of all the local community so please come and join or let us know what you would like to see or do in Woodend.

Our Term 2 program will be in your mail boxes during the holidays, or see full details of all our upcoming courses and programs on our website [www.woodendnh.org.au](http://www.woodendnh.org.au)

We have upcoming courses to assist you return to the workforce including MYOB, Bookkeeping & financial administration, introduction to retail and a course in education integration support.

Alison Pouliot, international scientist and photographer is bringing her exciting illustrated and stimulating fungi

workshops to Woodend. She starts with an evening seminar and identification seminar examining and identifying fungi specimens on Thursday 3rd of May. This is followed on Saturday 5th of May with an introduction to the Curious Kingdom, introducing you to the major fungal groups and foray into local forests. For those of you who would like to learn more there is an additional workshop on Sunday 6th of May, the Bizarre & Beautiful, a deeper exploration of a curious kingdom, where you are taken deeper into the fungi kingdom. Places fill quickly for Alison's workshops so book early.


Regulations for obtaining your recreational boat licence may be changing before long. Attend one evening session to ensure you are safe on the water. Training is provided for boat and powered watercraft (Jet Ski) enthusiasts. Obtain your certificate then go to VicRoads to get your licence without any further testing. Book in now for our next course on Friday 27 April, starting at 6pm.

Are you new to rural living or are you considering animals on your block? Do you want to know what animals suit your block? What regulations are there on keeping animals? Which animal is right for you? Do you want pets, lawnmowers or a money making venture? Paul will cover these questions and much more in his "Beginners Guide to keeping Livestock" course running on Thursday evenings starting in May.

The Woodend Neighbourhood House is once again proud to be hosting the annual Woodend Whole Town Garage Sale on Saturday 5th of May from 8am. Join in by hosting your own garage sale on the day- we do the advertising for free! We prepare maps of all the garage sales around town and make them available to shoppers from 8am on the morning of the garage sale. Clear out your cupboards and sheds because one person's trash is another person's treasure! Book your sale today.

For details of all courses and opportunities ring 5427 1845, visit 47 Forest St or go to [www.woodendnh.org.au](http://www.woodendnh.org.au).

Submitted by Sarah Campbell, Coordinator



**WOODEND & DISTRICT  
PODIATRY**

**John F. Shapland**  
Resident Practitioner

Reg. Department Veteran's Affairs

**5427 2064**  
Business and After Hours

1895 Mt. Macedon Rd., Woodend

The fencin' fella

- colorbond
- tubular
- timber
- steel picket
- pool

**Mini Earthmoving**  
*Kanga Loaders*

**Attachments include:**  
rotary hoe, soil leveling bar,  
4 in 1 bucket, trenchers,  
post hole diggers, tipper

**SHAUN BARRON**  
MOB: 0407 232 900 or 5422 3488 AH



"for all your water needs"

**The Water Bloke Specialises in**

- Rainwater Tank Installations
- Tank To Toilet connections
- Grey Water Recycling

We're based in Woodend, so call us for a free consultation and Water Audit of your home.

Contact Craig on 0410 275 714  
[thewaterbloke@gmail.com](mailto:thewaterbloke@gmail.com)



0402 228 286

**Pacifique Vue  
Vanuatu**

[www.pacifiquevue.com](http://www.pacifiquevue.com)  
Ocean front + FREE rental car



**Enrolments now open for 2012**

Educate, energise and excite your child with the love of music through singing, dancing and playing instruments.

Weekday classes available in Woodend, Macedon, Kyneton, Gisborne and Sunbury.  
Saturday classes in New Gisborne

[www.minimaestros.com.au](http://www.minimaestros.com.au)

*I love Mini Maestros because I like going there with Nan and Pa. We roll the balls, I wiggle my hips, I spin around and I love it so much".*  
Trista, 3-4 years

**Phone Jo on**  
0417 703 690  
or 5426 4719



Call Andrea  
0416 005 982

Registered Shiatsu and  
Massage Therapist

Now at Woodend Massage & Natural Therapies  
70 High Street, Woodend VIC 3442

**Monday Only**  
By Appointment 9:00am to 8:00pm

## Shiatsu

Shiatsu is an ancient Japanese form of healing. It has evolved from Traditional Chinese Medicine which has been around for centuries.

The basis of Shiatsu is the energy called Qi that flows throughout the body in pathways called Meridians. When at peace this Qi keeps us well and healthy. It is only when there is a blockage of this energy that symptoms begin to arise, indicating that all is not well.

In Shiatsu, we use a specialised form of Yin and Yang, called Kyo (empty) and Jitsu (full). For Jitsu, think of a tight muscle, like a knot in your shoulder. Kyo is more difficult to describe, but refers to the parts of the body where there seems to be something "lacking" energetically.

Shiatsu aims to balance the Kyo and Jitsu in the body by moving the 'stuck' energy from the Jitsu and coaxing it into the Kyo. The treatment is holistic, addressing the whole body rather than focusing on the one area where symptoms are most obvious.

Accessing and unblocking Qi within the body can have a profound effect upon our wellbeing, connecting us closer to ourselves and everything around us which shares the same Qi or life-force.

For any treatment the therapist might use a variety of diagnostic skills, to develop a plan that is individualized to your requirements. You wear loose clothing. It is usually performed on a futon on the floor, or massage table. A sheet or blanket can be used to cover you.

The therapist can use their fingers, thumbs, palms, elbows, forearms, knees and feet in applying pressure. Often other techniques are also included such as: rocking, stretches, joint rotations, moxa, cupping, and gentle body exercises.

Dietary and lifestyle advice can also be given to assist with improved wellbeing and Qi cultivation.

Submitted by Andrea Naphine , 0416 005 982

## CROWTHERS FURNITURE

Wardrobes • Laundries • Entertainment units  
Studies • Libraries • Kitchens

0458 440 455  
crowthersfurniture@gmail.com

## High Tea at Campaspe

Every Sunday afternoon, Campaspe House offers a traditional High Tea in the lounges of our historic 1920's Manor House. Ladies of all ages and distinguished gentlemen too, are enjoying special occasions such as anniversaries, birthdays, girl's weekends, hen's days or just enjoying a Sunday afternoon out. \$35 per person, reservations essential call 5427 2273 to make your booking.

CAMPASPE HOUSE  
A COUNTRY HOUSE HOTEL & RESTAURANT

GOLDIES LANE WOODEND 03 5427 2273  
reservations@campaspehouse.com.au www.campaspehouse.com.au

## KDHS Woodend Auxiliary News

The Auxiliary is preparing for its Market Stall at the Woodend Lions Market on Sunday April 15th. Jams and preserves, cakes and biscuits and slices, and some "Trash and Treasure" will feature,

Our next meeting will be on Thursday April 12th at Marjorie's house. New members would be very welcome, so phone Jo on 5427 1909 if you would like to come along!

### Kyneton Toyota sponsorship

Recently, John & Ros Bradbury of Kyneton Toyota, donated a car to Kyneton District Health Service.

Kyneton District Health Service, Chief Executive Office Jennifer Gale, was both overwhelmed and excited about this very generous sponsorship. "This car will make a substantial difference to the delivery of Maternity and Palliative services to our community. The Macedon Ranges community depends on us to care for them in their own homes where possible, that means we need transport for our nursing staff."

Said Ms Gale, "We sincerely thank Ros and John for their generosity and applaud them for their community spirit. This donation highlights the importance of us all supporting our local community as a way of improving services."

Submitted by Jo Clancy

## Woodend BATA

The first meeting of financial members will take place at the Neighbourhood House at 6pm Wednesday 4th April.

If you are not a member you can join at the meeting.

A new committee will be officially elected and additional committee members will be welcomed.

The proposed preliminary programme of events will be presented. For additional information please contact Karen Cousens woodendtraders@gmail.com or Stuart Bonnington 5426 3600.

Submitted by S. Bonnington

## JULIANA SMITH

BN (Mid), LLB, GDLP

BARRISTER & SOLICITOR

Bendigo & Macedon Ranges  
Woodend Office (by appointment)

72 Queen Street Bendigo 3550 Victoria  
T: (03) 5444 1181  
E: info@jslaw.com.au

# Eating Out, In & Around Woodend

 **the bentinck**  
OF WOODEND

**UPCOMING EVENTS  
AT THE BENTINCK!**

**Friday 4 May from 6.00pm**

Due to Easter, May sees the return  
of Friday night drinks  
Relax and unwind in the bar  
by the open fire  
A la carte restaurant open for dinner  
*Restaurant availability limited. Reservations required.*


**Mother's Day, Sunday 13 May**

Brunch 10.30am-12 Noon  
\$45.00pp Two course set menu  
with a glass of bubbly

Lunch 1.00pm-4.00pm  
\$60.00pp Three course set menu  
with a glass of bubbly  
*Availability is strictly limited. Reservations essential.*

**8 Carlisle Street, Woodend**  
**p: (03) 5427 2944 w: bentinck.com.au**

**CONFERENCES WEDDINGS EVENTS**



**Award winning Bread,  
Pies & Cakes**

**Shop 1 & 2, 115 High St, Woodend**  
**Open daily from 7am**  
**54272486**  
**[www.bourkies.com.au](http://www.bourkies.com.au)**



**the Vic**


**BAR & BISTRO**  
THE VICTORIA HOTEL WOODEND

Good food &  
local regional wines

**KENO**  
&  
**AUSTAR FOOTBALL**  
coming soon

**Tel 03 5427 2721**  
**Email: [vicwoodend@bigpond.com](mailto:vicwoodend@bigpond.com)**  
**[www.vicwoodend@bigpond.com](http://www.vicwoodend@bigpond.com)**

**67 High Street**  
**WOODEND**



**The Village  
Larder**

**Open 7 Days**  
**8am - 4pm!**

**81 High St, Woodend**  
**Phone 5427 3399**  
**[info@thevillagelarder.com.au](mailto:info@thevillagelarder.com.au)**  
**[www.thevillagelarder.com.au](http://www.thevillagelarder.com.au)**

# Eating Out, In & Around Woodend



## **Brunch- 10 till 3, Fridays, Saturdays & Sundays**

The Grill is the new home of Brunch, with a unique & flexible menu for brunch or lunch.

You select the combinations that tempt you most from a range of out-of-the-ordinary choices on the menu. It's deliciously different.

## **Dinner- 6 till 9, Wednesdays to Sundays**

Our ever-popular dinner menu continues to surprise and satisfy, and remains unchanged.

Our secrets lie in a South African tradition of grilling to mouth-watering perfection.

## **We offer:**

Cosy & relaxed dining

A great venue for groups & functions

Kids' room/ Kids' menu

Vegetarian & Vegan choices

Bar & courtyard

*Resistance is futile*

Phone 5424 8119

43 Trentham Road Tylden

See our menu at

[www.thegrillattylden.com.au](http://www.thegrillattylden.com.au)



Frank & Rose Gorlitz

Wednesday - Saturday  
8am till late  
breakfast, lunch & dinner  
Sunday 8-3.30

For Bookings

**Ph/Fax 5427 4447**

**Mobile 0488 423 537**

"Where Lovers of Food Eat"

\* FAB FOOD  
\* FUNCTIONS & CATERING  
BY ARRANGEMENT  
Bookings Essential  
BYO wine only  
Light Snacks Mondays  
Free entry for  
Macedon Ranges residents

**Tel: 5427 0295**

Large range of Australian Gifts

**Hanging  
Rock  
Café &  
Country  
House**

## **Brunch at The Grill... Deliciously Different**

Brunch, hey! Now there's a thing.

Lateish brekkie? Brunch? Early lunch? Late lunch?

You should check out what Denny and Michelle have come up with at The Grill at Tylden. I have.

The Brunch menu gives new meaning to the phrase 'flexible menu'. It works for different times of the day and individual tastes and appetites with out-of-the-ordinary options and possible combinations. Expect fair size portions and prices.

First, there is what they call 'Main Fare'. This includes fish (salmon, kippers), steaks, cutlets, chicken, boerewors sausage, eggs, omelettes, tofu skewers, soup, burgers, and for the adventurous, lamb's fry and bacon, devilled kidneys and crumbed brains. You choose from a range of complimentary sauces and condiments to go with your Main Fare.

Then there's the 'Accompaniments' with the likes of Sicilian-style beans (with or without Kaiserfleisch), pumpkin and amaretto flan, Swiss potato rosti, thick cut bacon, sautéed cherry tomatoes in house relish, Indian flavoured carrot fritters or maybe you feel like crunchy chips, sweet potato fries or a salad.

With a few small changes to the menu items here and there, the Grill's Brunch offers plenty of choices for vegetarians and vegans.

Ever heard of 'slaphakskeentjies'? Neither had I. A rather simple but delicious South African dish of baby onions cooked and served in a light mustard flavoured mayonnaise. It will go beautifully with just about anything on the Brunch menu.

All in all, a very different and tempting menu that deserves the novel name ... Brunch. It is sure to please.

Brunch is on at The Grill at Tylden on Fridays, Saturdays and Sundays from 10 till 3pm. Bookings on 5424 8119. See The Grill's menus at [www.thegrillattylden.com.au](http://www.thegrillattylden.com.au)

Submitted by Barry McDonald

*Space is still available in the  
Eating Out Guide.*

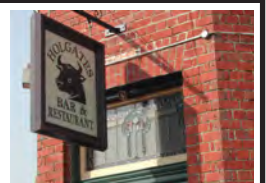
*Prices start at \$52 per month*

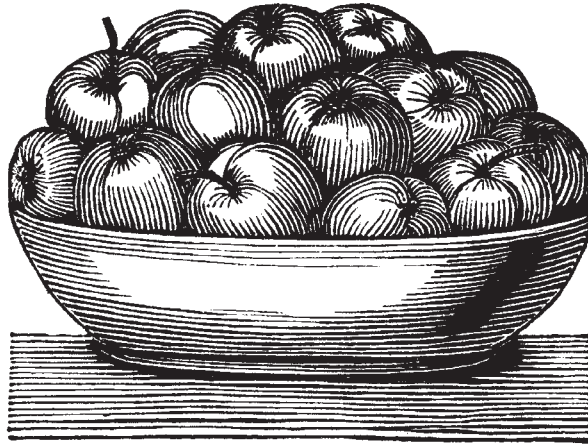
## **HOLGATE'S BAR & RESTAURANT**

Microbrewery Hotel with cosy open fires, stained glass windows and friendly atmosphere. Award winning local beer. Delicious meals including house-made bread, pasta and desserts. Function room and stylish accommodation now available.

Open for Lunch Tues-Sun. Open for Dinner 7 Days

**79 High Street, Woodend**





**A** is for **APPLE**

---

During the month of April we are preparing a selection of menus from

**"The Australian Country Woman's Cookbook".**

Our menus have been on a path through Southern France and we thought it time to steer them home. We have been testing dishes and making adjustments to the cooking techniques, such that the traditional grace of these dishes continue to shine. If you don't know what a Keepsake Casserole is, or a Complexion salad, or Curly wigs?... come along.

**April 7**

Complexion Salad

Lamb cutlets with mint  
butter

Cauliflower cheese  
Baked tomatoes

Curly wigs  
Vanilla icecream

**April 14**

Waldorf salad

Chicken in milk  
Bread sauce  
Spinach casserole

Spiced raisin pie

**April 21**

Potato cheese puffs

Pork neck with prunes  
and apple  
Sharp cabbage

Lemon delicious

**April 28**

Smoked haddock pancakes

Keepsake casserole  
Buttered noodles  
Green beans

Pears and nuts in  
gingerbread

**COLENZO**

42D Anslow St, Woodend. 5427 2007 [www.colenso.com.au](http://www.colenso.com.au)

## Mission: Cambodia trips - Volunteer in Cambodia with CKF

Over the New Year the Cambodian Kids Foundation ran two of their Mission: Cambodia Volunteer Trips. The ages in both trips varied from 16 to 60+ and it was an extraordinary experience for us all.

Despite running many of these trips throughout the year, each trip & group of volunteers provide a different experience.

In December/ January our hard working Mish: Camer's built a brand new home for a family in Soksan Village, their old home flooded every time it rained, and had no proper flooring.

They also celebrated New Year's Eve on the tropical beaches of Kep, after a night of dancing & partying with the local people at a Khmer NYE Festival.

Our December/ January volunteers also spent a lot of their time working with the women from the slum areas in Phnom Penh, helping to establish CKF's new Women's Training Centre, where women with little education, who cannot move on to university come to learn a trade & hopefully be able to create their own business in the future.

The end of January/ beginning of February saw our second group for the New Year come over. Despite being a group of all girls, they were quick to show everyone that they were going to work just as hard as any boy would. Our January /February group were able to help our Kimyeng Kindergarten out by constructing six new vegetable gardens so that we can grow more healthy food to feed our Kimyeng Kindergarten children each day.

*Continued on page 18*

**Massage  
Pilates  
Remedial  
Rehabilitation**

*with Pamela Kell*

By appointment  
22 Goode Street  
Gisborne  
**5428 1000**  
**0408 093 098**

Assisting in the repair and maintenance  
of your body

*Meta Massage*

SPORTS/REMEDIAL MASSAGE, SHIATSU, REIKI  
Raymond White

**Telephone 0411 268 336**

**for an appointment**

18 years experience • Chronic and acute conditions  
Sports injuries • Rehab work

**CUSTOM PICTURE  
FRAMING**

OBJECT (3D) FRAMING  
TEXTILE MEDIA  
EXPERIMENTAL FRAMING  
MIRRORS - TO YOUR DESIGN  
FINE ART SALES

**bexley's**

OF WOODEND

93 HIGH STREET  
WOODEND  
*(next to Maloa House)*

P: 03 5427 3003  
M: 0425 797 728  
E: FRAMING@BEXLEYSOFWOODEND.COM  
W: WWW.BEXLEYSOFWOODEND.COM

**Sale! 15% off all wall stock**

Includes: **Clifton Pugh**  
**Bill Coleman**  
**Original advertising posters & more**

### Be in Control of Your Retirement!

Establishing a Self Managed Superannuation Fund (SMSF) enables you to have:

- Control over the assets of the fund
- Transparency of fees
- Ability to borrow to purchase certain investments
- Quicker strategic decision making
- Greater investment options including direct property
- Asset protection
- Ability to make "in-specie" contributions
- Flexibility of tax planning strategies

#### Have you reached preservation age and considered a Transition to Retirement Income Stream (TRIS)?

TRIS is a type of income stream that can be drawn from a superannuation fund on reaching your preservation age whilst continuing to work, the benefits of a TRIS include:

- Provides a member with a cash flow whilst reducing their working hours as they ease into retirement
- Any earnings on assets financing your TRIS are exempt from tax in the fund
- TRIS allows you to enter into a tax effective re-contribution strategy
- TRIS paid to members over 60 years of age are tax free

To discuss further please contact Andrew Marshall or Janine Orpwood - 54273790 (85 High St, Woodend)

**Langley|McKimmie**

Chartered Accountants

www.langleymckimmie.com.au E: info@lmadvisors.com.au

# This page is proudly sponsored by the 19th HOLE SHOPPING CENTRE



## Upcoming Events

### April

- 3 Woodend Red Cross meeting
- 4 Woodend BATA meeting
- 5 Dinner & Karaoke – Woodend RSL
- 6 Good Friday
- 7 – 9 Woodend Art Market – Woodend Railway Station
- 8 Easter
- 11 Macedon Ranges Film Society – Heavenly Creatures
- 12 KDHS Woodend auxiliary meeting
- 13 Mother's Day Classic fun run
- 13 Celtic & Cobbers – Woodend RSL
- 14 Woodend Heskett Footy & Netball Locals Day
- 15 Woodend Lions Market
- 16 Macedon Ranges Basketball registrations
- 18 Central Victorian atheists & freethinkers gathering – Albion Hotel Kyneton
- 21 Newham Garage sale
- 21 Dinner & Entertainment, Ricky Lee – Woodend RSL
- 22 Open Meeting on Public Issues – Victoria Hotel
- 25 ANZAC Dawn service – Mt Macedon
- 24 Cancer & Natural Therapy Foundation – Mediation for health, happiness & enlightenment
- 27 – 6 Daylesford Macedon Produce Harvest Week
- 29 Rotary Club of Woodend Luncheon
- 29 Macedon Ranges Running Club – Run from Riddells Creek to New Gisborne
- 30 Macedon Ranges Running Club information evening - Barringo

### May

- 5 Woodend whole town garage sale
- 9 Macedon Ranges Film Society – The Princess Bride
- 25 Karlsruhe 170 anniversary June
- 8 – 11 Woodend Winter Arts Festival
- 13 Macedon Ranges Film Society – Goodbye Lenin

All community groups and events are invited to submit their dates for listing on the community events calendar

### COMMUNITY GROUPS CONTACT DETAILS

- Alcoholics Anonymous, Friday night, Cobaw Community Centre, 0409 131 144
- Australian Breastfeeding Association, Heather, 5427 2398
- Cobaw Thursday Walking Group 5427 3340
- Daylight Masonic Lodge, 5427 2480
- 1st Woodend Scout Group, 5427 1251, Roger
- Friends of Macedon Ranges Library, Chris/Bill 5427 2469
- Garden Club, 5422 6062 / 5427 3340
- Kyneton Municipal Band, Doug, 0411 420 113
- Lancefield-Macedon Ranges, Relay For Life, Melissa, 0438 831 427
- Living Word Christian Church, 5429 6327
- Historical Society, Courthouse, 5427 2523
- Macedon Ranges & District Motor Club, 10 Webb Cres, New Gisborne 1st Wednesday each month 8pm
- Macedon Ranges Animal Aid, Buffalo Sports Stadium, 5427 1752
- Macedon Ranges Bridge Club, 5420 7595
- Macedon Ranges Families of Children with Disabilities Support Group, 5427 3365
- Macedon Ranges Residents Assoc., 5427 1481 or 5427 2651
- Macedon Ranges Communicators (ITC), 5427 2669
- Macedon Ranges Photographic Society, Ron Mathews, 5427 3284
- Parent Support 4 LD, - Kerrie 0414 432 158
- Probus, 5427 2003
- R.S.L., Anslow Street, 5427 3122
- Red Cross, 5427 1260
- Rotary Club of Woodend, meetings weekly at Vic Hotel Thursdays 6.45pm, Brendan 5422 6442
- St. Mary's Guild, 11am, 4th Wednesday of month
- St. Mary's Street Stall, 9-12 noon outside Woodend Newsagency (2nd Sat of the month)
- Woodend Landcare Group, Jo 5427 1909 or Doug 5427 0666, 3rd Tues Meeting, 4th Sunday Working Bee
- Woodend Art Group, Railway Station, 5427 1659
- Woodend Hanging Rock Petanque Club, Hanging Rock Reserve, 5427 2477
- Woodend Lions Club, Meetings 2nd/4th Wednesday each month, Barry McDonald, 5427 1272]
- Woodend Model Railway Club, Buffalo Stadium
- Woodend Neighbourhood House, 47 Forest St, 5427 1845
- Woodend Pony Club, 5427 2793
- Woodend Senior Citizens Club, Comm. Centre
- Woodend SES Training Nights Monday, Urquhart St
- Woodend Tennis Club Nadine, 0439 399 838
- Woodend Winter Arts Festival Inc., Jacky. 0417 225 268

- Ian Marks Liquor**  
1300 627 575 ext 24 &34
- Blue Orange Concepts: homeware**  
5427 4500
- Woodend Pizza & Pasta**  
5427 3777
- Coles Supermarket**  
5427 2377
- Collier Office & Business Assist and Woodend Copy Centre**  
5427 3092
- Pets Haven**  
5427 3603
- Mitre-10 Woodend Hardware**  
5427 2314
- BP Woodend**  
5427 2248
- Target Country**  
5427 4366
- Macedon Ranges Travel Services**  
5427 4777
- Kosmac & Clemens: optometrists**  
5427 4577
- Woodend Cycles**  
5427 2662
- Salvation Army Family Store**  
5427 4421
- Loose Change Bargains**  
5427 4466
- Bodywise Underwear**  
1300 66 17 66
- Australia Post**  
5427 2600
- Feeling Framed**  
5427 4455
- The Spa Beauty Therapy Centre**  
5427 3322
- HIGH STREET SHOPS**
- Color Me Cooper**  
5427 1454
- Chelleon For Hair**  
5427 3246
- RT Edgar Real Estate**  
5427 1222
- Woodend Bakery Cafe**  
5427 3434

The Group also built a new fence in the Village, and were nicknamed the "Fence Masons" for their exceptional fence making abilities!



Nicole & Sok La hanging out in a hammock at the Kimyeng Centre

Every single volunteer we have had over with us in Cambodia has helped to enrich the lives of the people we work with by providing such positive & fun experiences.

These trips allow you to see Cambodia as a volunteer & as family - not as a tourist!

If you are a fun loving, hardworking, passionate and kind hearted individual then we want you!

We are currently taking applications & interest for all of our 2012 dates: 15th - 30th April, 7th May - 20th May, 20th November - 4th December, 28th December - 11th January 2013, and 4th February - 17th February 2013.

We promise to give you an experience you will never forget, you will no doubt leave a piece of your heart over here in Cambodia, but what you will take away is lifelong friends, a new family, a million and one experiences and stories & of course a brand new outlook on life.

Please contact [sam@cambodiankidsfoundation.com](mailto:sam@cambodiankidsfoundation.com) for more information on how to become involved with our Mission: Cambodia Trips.

Submitted by the friendly team at the Cambodian Kids Foundation, who want to see you in Cambodia in 2012!

## Heritage Society displays

*"The railway comes to Woodend"* -

An interesting display now on at the Woodend Railway station and also at the Court House in Forest Street. At the Court House we will also display photographs and other material relating to all the people and families who were added to the walk at this year's dedication ceremony.

Submitted by Janet Hawkins

## Woodend Playgroup

### Committee changes

Woodend Playgroup is currently forming its Committee for 2012. We would like to extend a big thank you to those Committee members deciding to stand down, for the excellent work, commitment and service they have provided to our members and the community. We will announce the new Committee next month and encourage anyone who is interested in joining our voluntary group to please contact Melanie Lloyd on 0419 129 825 or Faye Cormick on 0410 442 087.

Playgroup is a great facility to meet new people and offers a happy and safe environment for our children to play in. We have extensive indoor and outdoor facilities catering for children aged 0-5. We always welcome new members. If you have just moved to the area or want to meet more people in your community, then playgroup is the perfect place to come. Our sessions run every day of the week and groups cater for children of similar age. We are currently taking enrolments for Term 2. For enrolments and enquiries, please call Liesl on 0411 588 596.

Submitted by Kate Dalton

Joan P Jane

**PSYCHOLOGIST**

0403 046 048

5426 4165

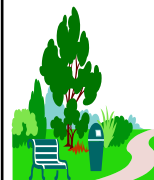
- Stress • Post Traumatic Stress •
- Anxiety • Depression • Relationship • Family •
- Mental Skills Training • Sport • Self Esteem

The Bank  
75 High St.  
Woodend 3442

**Bulk Billing**  
(Medicare - DVA - GP Referral)  
Provider Number 2827013A  
[joanjane@bigpond.com](mailto:joanjane@bigpond.com)

## Truck & Bobcat Hire

Paving Turfing Rockeries  
Paling & Colourbond Fencing  
Watering Systems Retaining Walls  
All of your garden and driveway  
construction catered for



CD & MC Muir Pty Ltd  
[craig@bobcatcraig.com](mailto:craig@bobcatcraig.com)

0417 331 085 5427 3095

**WARNER'S JEWELLERS**  
EST. 1912 ~ 4th Generation Jewellers

**Manufacturing Jewellers**

**Jewellery Repairs**

**Watch & Clock Repairs**

**Valuations & Rethreading**

97 High Street, Woodend

5427 1573

**WOODEND  
NURSERY**

"LOCAL KNOWLEDGE FOR LOCAL CONDITIONS"

36 URQUHART ST, WOODEND

5427 1866

Full range of plants, seedlings  
& gardening accessories  
open 7 days



☺ explore ☺ play ☺ share ☺ learn ☺ grow ☺ laugh ☺

If you are looking for a fun activity to share with your child, come and try Kindergym. Kindergym will develop your child's gross motor skills, as well as build their confidence and social skills.



### Woodend

Where: Buffalo Stadium  
Forest St, Woodend

When: Friday Mornings starts 10<sup>th</sup> Feb

Cost: \$9 per class or \$80.00 for 10 pass card

Classes: 9.30am (1 – 3 years); 10.30am (3 – 5 years)

Phone: (03) 5427 3411

### Gisborne

Where: Gisborne Community Centre – Hamilton St, Gisborne

When: Thursday Mornings starts 9<sup>th</sup> Feb

Cost: \$9 per class or \$80.00 for 10 pass card

Classes: 9.30am (1 – 3 years); 10.30am (3 – 5 years)

Phone: (03) 5428 3318

## Make your Special Day Kindergym Day

Kindergym is a wonderful way to spend a morning playing with your little one, away from the stresses of work and home life. The classes are held in Gisborne and Woodend, to encourage parents and their kids to interact together as children explore the various obstacle courses. The themed sessions vary each week, giving children something new to discover every visit.

Kindergym is not only fun, but has great developmental benefits; develops children's gross motor skills, special awareness, balance and coordination as they climb, crawl and jump their way through the various courses. Each session includes 'mat time', where children participate in music, singing and dancing. During this music and movement component of the session children will use various props and instruments to make lots of noise! They also learn how to follow instruction, participate in a group setting and share. All great lessons for the future.

Kindergym is also great for developing children's social skills – parents' as well! It is a wonderful place to meet other parents and children. We encourage mothers' groups to come along together, it is a great place to meet that is always dry.

If you are looking for a great fun activity to share with your little one, make Kindergym day your special day together. Your children will love it, and so will you.

Kindergym sessions are run weekly during the school term. Sessions are \$9.00 per child, with 10 pass cards and sibling discounts also available.

Woodend Classes are run through the Buffalo Sports Stadium, Forest St, Woodend. 1 – 3 years 9.30am – 10.30am and 3 – 5 years 10.30am – 11.30am

Submitted by C. Kennedy, Leisure Services Coordinator, MRSC

# woodend wine Store

**We stock over 300 boutique Australian wines, beers and spirits plus a range of Internationals.**

We have close ties with many regional winemakers and growers.

Our selection reflects the passion for quality from small independent wineries and craft breweries

Open every day

Mon - Thursday & Saturday 10am - 7pm

Friday 10am - 8pm

Sunday 11pm – 6pm

42e Anslow Street, Woodend. 03 5427 2228

**Woodend Wine Store**

**A Wine Lovers Experience**

## MACEDON RANGES SELF STORAGE

- \* 7 day access
- \* Individual units
- \* Affordable prices
- \* Insurance available
- \* Now Fully Alarmed

Store your:

- \* Cars
- \* Boats
- \* Business documents
- \* Furniture etc.

**Lot 3, Hoyle Court, Kyneton 5422 1898**  
**(Off Beauchamp St) 5422 3488**

### Clarity Integrated Technology Services

...the quality of being clear, pure, or transparent

Business networking  
Home audio/video & networking  
Broadband/wireless  
Hardware sourcing & evaluation

Making technology easy....  
No matter who, or where you are



0419 556 140

Ian Templeton  
PO Box 1020  
Woodend  
itempleton@ovi.com



### Change Your Clock, Change Your Smoke Alarm Battery

1st of April is the end of daylight saving and along with changing your clock it is the perfect time to also change your smoke alarm batteries. Woodend Captain Mick Christie said house fires occurred more frequently in the cooler months, so “it makes good sense to check your smoke alarm battery at the same time you change your clock”.

“In Autumn and Winter, we tend to stay indoors more, turn on the heating and do more cooking indoors,” Captain Christie said. “Only the sound of a smoke alarm, not the smell of smoke, will wake you in a fire, so it’s essential that smoke alarms are tested on a regular basis.”

“All smoke alarms, whether hard-wired or wireless, require a battery” added Captain Christie. “Hard-wired alarms use a battery as a back up and the battery needs to be changed as well.”

Smoke alarms usually have a lifespan of about 10 years—alarms older than this should be replaced. Some smoke alarms have a printed use-by date, but if an alarm is still ‘beeping’ after its battery has been changed, it should be replaced.

Only a working smoke alarm saves lives.

If there’s no sound from your smoke alarm, there’s no warning.

Remember, it is normally smoke, not flame or heat, that kills the majority of fire victims. When asleep, our sense of smell is largely diminished, and we’re unlikely to smell smoke. The smoke may also put occupants into a deeper sleep, so a smoke alarm actually helps wake you. And, with all of the plastics, materials, electronics and chemicals around - house smoke can be extremely toxic.

Here are some interesting home fire facts:

- One in five Australians have experienced a fire in their homes.
- Research has shown that the absence of a smoke alarm can increase the possibility of a fatality by 60%.
- While 45% of properties visited had smoke alarms installed, 31% of those were not functioning with the batteries flat or even removed.
- About 64% of house fires were unintentionally lit.
- Around 56% of these started in the kitchen during cooking and a further 15% the result of electrical faults.
- In more than 95% of metropolitan household fires someone was home at some stage during the fire.

To ensure you have a working smoke alarm:

- Test it weekly by pushing the test button with a broom handle to make sure it beeps.
- Dust the alarm with a vacuum cleaner brush.
- Change the battery at least once a year.

For further information contact Captain Mick Christie or 1st Lieutenant Mike Dornau at the Woodend CFA on 5427 2356, visit the station in Urquhart Street or our website: [www.woodendcfa.org](http://www.woodendcfa.org).

The Woodend CFA is a volunteer emergency service, committed to Creating Safer Communities.

Submitted by 1st Lieutenant Mike Dornau, Woodend CFA



# Vintage Asian Furniture

Exclusively Online

## GINKGO FURNISHINGS

Beautiful, often one of a kind pieces of antique furniture to add style & character to your home.

The collection is available exclusively online with free delivery on pieces of furniture over \$100 to buyers in the Macedon Ranges for a limited time.

[www.ginkgofurnishings.com.au](http://www.ginkgofurnishings.com.au)





*Members of the Morris & Cohen families with the Directors of Brooke Street Medical Centre*

### **Local families honoured at opening**

The Federal Member for McEwen, Mr Rob Mitchell MP, officially opened the extended Brooke Street Medical Centre on Wednesday 22 February.

Mr Mitchell applauded the “fantastic new patient facilities” and paid tribute to “the outstanding work of the practice directors, practice manager, doctors, admin and reception staff, practice nurses and the many specialist staff” who work so collaboratively at Brooke Street Medical Centre.

The redevelopment was carried out with the aim of improving medical and allied health services available to the community as well as supporting the education and training of medical, nursing and allied health students.

Honoured on the day were the families of Dr Bryan Cohen and Olive and Albert Morris. The medical student training room has been named after the late Dr Cohen in honour of his services to the local community as a general practitioner and to education and training. Olive Morris and the late Albert Morris who had lived on the land where the new facilities are built were honoured by naming the new extension as the “Morris Wing”.

The Brooke Street Medical Centre dedication to training students was celebrated by Professor Geoff Solarsh, Director, Bendigo Regional Clinical School of Rural Health, Monash University. He said the collaborative approach to training was outstanding and a leader in the field.

### ***Fit in Life* – Gym now open**

*Fit in Life*, the Brooke Street Medical Centre Gym is now open. We can assist people with injuries via rehabilitation or people with chronic disease risk factors.

*Fit in Life* is for people who need an exercise program developed to meet specific health needs. After a comprehensive assessment, a unique gym program is developed to target your specific health problems or risk factors.

For information about membership and fees, ask our receptionists for an information sheet.

### **After-hours service**

For urgent medical needs when Brooke Street Medical Centre is closed – call the Central Highlands After Hours Medical Service on **1300 55 75 12**. Contact with one of our GPs will be organised if needed.

### **Flu clinics**

Our Flu vaccination clinics are now open – call 5427 1002 to book an appointment. These flu clinic consultations which are just for the flu vaccination will be bulk billed.

The cost of the vaccination is \$21 however the Government offers free vaccinations for those who are aged 65+, pregnant or indigenous aged 15+; and those people with chronic illnesses or conditions that predispose to severe influenza illness. Your doctor will assess your eligibility.

### **New patients always welcome**

***Brooke St. Medical Centre – tel. (03) 5427 1002 (after hours: tel. 1300 55 75 12)***

## A Final Note

To all our family, friends and community supporters: it has been a joy singing to you for the past 5 years but it is time for other notable things in our lives. Thanks for listening-  
Women of Note.



*Anne, Bec, Brigid, Karen, Jenn, Nicole, Robyn and Yael - Women of Note*  
Submitted by Robyn Zumstein on for Women of Note

## What's New



Spoil mum this Mother's Day. Luxurious new robes ... and lots more to choose from. Gift Vouchers are also available.



**ZAPPA-do** *Baby and You!*

3/87 High Street, Woodend • 5427 1270 • [www.zappado.com.au](http://www.zappado.com.au)

Paul Cox  
0408 638 516

REC  
13242



**Kyneton Data & Electrical**

*Your Local Electricians*

INSTALLATION, REWIRING, REPAIRS & MAINTENANCE OF  
ALL ELECTRICAL, TELEPHONE & COMPUTER EQUIPMENT

## Furniture @ The Mill

Handcrafted Recycled  
Timber Furniture  
Home Wares/Gifts  
Coffee, Tea & Bondi Chai

988 Black Forest Drive, Woodend  
**Bring this ad in for a free Coffee**

## Welcome to the Woodend Star Kids Club April Birthdays

2nd	Pip Southey.....	Turns 11
7th	Cooper Ormerod .....	Turns 11
11th	Scarlett Southey.....	Turns 13
12th	Adele Gehling.....	Turns 9
13th	Thomas Dale.....	Turns 7
14th	Jack Hayward.....	Turns 13
16th	Molly Spencer-Stewart .....	Turns 9
18th	Oran Callaghan .....	Turns 3
22th	Jordan Deleeuw .....	Turns 13
23rd	George Foster .....	Turns 10
24th	Meghan Norman .....	Turns 10
29th	Brandon Lee Gabauer.....	Turns 11

## Happy Birthday Everyone!

### JOIN THE WOODEND STAR KIDS CLUB

Fill in your details below and mail to P.O. Box 387 Woodend  
Age limit is 13 years old. Must be a resident of the 3442 postcode

Full name: \_\_\_\_\_

Address: \_\_\_\_\_

Date of Birth: \_\_\_\_\_ Age: \_\_\_\_\_

Phone: \_\_\_\_\_

Parent/Guardian

Signature: \_\_\_\_\_

Sponsored by:

**Collier Office**  
and Business Assist

Shop 5, 130 High St, Woodend. P: 5427 3209 e: [sales@collieroffice.com.au](mailto:sales@collieroffice.com.au)

**You can collect your birthday surprise by  
visiting Collier Office & Business Assist**

**ADVENTURE FLIGHTS UNLIMITED**  
Get ready for the ride of your life

**Warbird Adventure Flights**  
at Kyneton Airfield

Gift Certificates Available

Ph: 0403 891 198 [www.adventureflightsunlimited.com.au](http://www.adventureflightsunlimited.com.au)

# Wanted:

## Cold Draughty Homes Wanted for Meaningful Retrofit Relationship

### Does this sound like your home?

- Your windows rattle
- You can feel air blowing in, and around, your closed windows and doors
- There is a big gap under your front and / or back door
- You can see daylight around the edges of your door – even when it's closed
- You can feel cold air whipping around your ankles
- You have open fire places and / or wall vents
- Lots of spider webs inside (spiders love passing trade)

### Or this... perhaps?

- In winter, once your heating is turned off, within 10 – 15 minutes your home is really COLD
- Your thermostatically controlled heating system only switches off for a short time
- Your energy bills are extraordinarily high

## Do you REALLY want to spend another Macedon Ranges winter like that?

Now, it is easy to retrofit your home to be cosy in winter and cool in summer, with significantly lower energy bills (up to 80%)!

All the expertise to retrofit YOUR home is right here in the Macedon Ranges with Australia's leaders in energy efficiency retrofit, ecoMaster!

So, call 5248 8526 and speak with Amanda or Kellie for a meaningful retrofit discussion about your home; or pop in and see our new showroom, corner of Barry & Ladd Road, New Gisborne

*"I've lived here 17 years and never been warm in winter until this year... thank you ecoMaster, you have changed my life."*

[www.ecoMaster.com.au](http://www.ecoMaster.com.au)



## Cancer and Natural Therapy Foundation

### What's on in April, 2012

The Cancer and Natural Therapy Foundation is a non-profit, registered charity organisation aimed at assisting people in accessing information and resources in the area of natural therapies and expanding health care options.

### Weekly Support Groups:

- Health Awareness Support Group  
Offering meditation, reiki healing and general discussion on natural therapies and preventative medicine. Tuesdays 7.30-9.30pm

### Self Empowerment and Healing Support Group

- For confidence building and positive living. Thursday 10-11.30am

### Health Seminar and Fundraising activities for April

- Yarra Valley Wine Bus Tour Fundraiser – Sunday the 15th of April. (previous date cancelled) Cost: \$100. Includes bus, 2 course lunch, wine tasting and entertainment. Contact the Cancer and Natural Therapy Foundation for more details. Bookings essential!
- Meditation for Health, Happiness and Enlightenment with Tim McKibben. Tuesday 24th of April, 7.30pm. Cost \$15, \$10 concession or \$8 CNTF members.

Held at Neighbourhood House and Community Centre, Elizabeth Drive, Sunbury. Phone: 9740 3977 (Mon/Wed/Fri) or Sandra on 0411 100 947 or go to

[www.cancernaturaltherapyfoundation.org](http://www.cancernaturaltherapyfoundation.org)

All Welcome!!

Submitted by Sue de Jonge



Invitation to parents  
of primary school students  
to our  
Information Evening

Thursday May 3  
at 7pm  
Melton Road, Gisborne

Includes tour of college and light supper

[gisborne.sc@edumail.vic.gov.au](mailto:gisborne.sc@edumail.vic.gov.au)  
Tel: 5428 3691  
[www.gisbornesc.vic.edu.au](http://www.gisbornesc.vic.edu.au)

Gisborne Secondary College



## Woodend RSL Womens Auxiliary

The Easter Dine and Dance which will be held on the 4th of April commencing 11.30 a.m. We will be featuring the Easter bonnet competition and drawing our Easter raffle of the beautiful double bed patchwork quilt donated by Shirley and Ron to the auxiliary. The karaoke girls "The Wanabes", will be entertaining and lunch of soup, sandwiches, and sweets for \$10.00 is available. So folks please book early. The Dine and Dance is very popular, and everyone is welcome, so come along for a fun day of music, good food, and good company.

The RSL has a new cook, Tracey, who will provide meals on 1st Fridays each month and RSL are testing out Saturdays as well. So come along and don't forget to book early. Bar will be open each meal night and daily at 4.p.m.

We have a few members out ill this month: Margaret, Joy, and Marie. Get well soon girls, we miss you all. Our auxiliary has recruited two new members, welcome Kay and Jenny H. We still need more new members so if you can spare an hour or two a month please, please, please contact me. We need new faces and new ideas. You don't have to be a member of RSL to be on our auxiliary. Anyone from 18 upwards is eligible. So give it a thought and join our happy little group.

April is always a busy month with Anzac day at the cross dawn service, the gunfire breakfast at the RSL at 7.a.m. then our own service at 11.15 a.m. followed by morning tea, and later in the day our RSL does a service at the Woodend Aged Care facility.

Submitted by Betty Barned. Hon. Secretary




**We offer plenty of variety**

- Strength / Core / Cardio
- Spin Cycle Classes
- Bootcamp
- Boxing
- Kids & Teens Fitness
- Expert Running Coaching
- Corporate Fitness
- Personal Training
- Mobile Service available

**5 week Group Fitness passes**  
 5 sessions \$75  
 10 sessions \$135  
 Unlimited Sessions \$200

---

Monday 4.30 pm 5.30 pm 7.15 pm	Kids Running Adults Running Spin/Circuit	Tuesday 6.00 am 9.30 am 4.45 pm	Bootcamp Spin/Boxing Teens Circuit
Wednesday 6.30 am 9.30 am 4.30 pm 7.15 pm	Spin Spin/Circuit Kids Running Spin/Boxing	Thursday 6.00 am 9.30 am	Bootcamp Running
Friday 9.30 am	Spin/Circuit	Saturday 7.00 am	Bootcamp

**Phone 0425 111 765**

# Woodend Self Storage

(Vic) Pty Ltd



66 Units available  
 Full security  
 Trailer hire available  
 7 day access  
 Affordable prices  
 Insurance available

For any enquiries please contact  
 Leonie or Dennis Barker on 5427 4175



## Accountants, Advisors & Planners

Office Locations:  
111 High Street, Woodend Ph: 03 5427 8000  
2/19 Bourke Street, Kilmore Ph: 03 5782 1273  
email: admin@riverwoodgroup.com.au  
website: www.riverwoodgroup.com.au

Riverwood Group can offer a *Total Financial Solutions* package for you and your family. Take a look at some of the services we provide:

### Taxation

All your taxation requirements to suit individuals and small businesses.

### Investments to Create & Protect your Wealth

Managed Funds, Indexed Funds, margin Lending and more

### Planning for Retirement

Allocated Pensions, Centrelink Benefits and Payments

### Stockbroking

Recommended lists, broking facility available, share updates

### Superannuation & Rollovers

Advice, placements, Self-Managed Super Funds and Eligible Termination Payment Advice

### Other Services

Home & Investment Loans, Business Loans and Leasing, Income Protection, Life Insurance, Professional Indemnity, Estate Planning and more.

## Inaugural Woodend Amazing Race



Recently our Wills Cub Pack (1st Woodend) held their first sleepover for the year, which was followed by the inaugural Woodend Amazing Race. These activities were proposed by the Cubs themselves in Pack Council late last year. Cubs competed in teams of 4 and completed a circuit around Woodend, which involved following clues to various checkpoints and using observation to answer lots of questions along the way. All of the teams earned points for correct answers to the quiz, extra points for safety and teamwork, and one team even earned bonus points for spontaneously cleaning up the spilled rubbish at the back of the Salvation Army store on their way past. We are very proud of this type of initiative and responsibility which is an important part of the Scouting ethos.

The winning team was the Crazy Monkeys and they were awarded the Inaugural Wills Amazing Race Golden Sneakers which are now proudly hanging on the notice board in the Scout and Guide Hall. All up, we had a fantastic time and we're all keen to do it again.

Other activities in which 1st Woodend Scout Group members have participated in the past month include: an introduction to canoeing (Burke Cub Pack and Wills Cub Pack), an overnight hike (Tuckonie Scout Troop), a District Leadership Camp (Tuckonie Scout Troop), AG weekend camp (Macedon Ranges Venturer Unit- MRVU) and the TopGun weekend camp (Tuckonie Scout Troop, MRVU and Rover Crew).

For enquiries about joining 1st Woodend Scout Group, please contact either Leisa (0429 331 695) or Dietlind (0448 515 755).

Submitted by Leisa Macartney (Group Leader 1st Woodend Scout Group)

## WOODEND MOWERS

The old Blackforest Saw mill - 988 Blackforest Drive, Woodend

5427 3116



Victa Ride on Mowers \$2499

PUSH MOWERS starting from \$275



Don't forget you can hire our Big Dog Zero Turn Mower for as little as \$95 a day

## ON TIME!!!

Tired of being late for your appointments?

### Sun-Ranges Hire Cars

can look after all your travel needs, with Prompt & Personal door to door service for less than you think

Airport Transfers - Business & Corporate Travel - Weddings & Special Occasions - Sporting Events - Theatre Nights

Phone 0468 347742

## KYNETON EQUIPMENT & PARTY HIRE

FOR ALL YOUR HIRING NEEDS  
8-12 BEAUCHAMP ST PHONE (03) 5422 2311  
KYNETON VIC 3444 FAX (03) 5422 2930  
Email: kynhire@bigpond.net.au  
website: www.kynetonhire.com.au

## Community strides towards cancer cure

A record number of cancer survivors and carers attended this year's Lancefield/ Macedon Ranges Relay For Life, undeterred by rain accompanying them for the traditional opening lap and uplifted by support from both loved ones and strangers.

Results for the 10th Anniversary Relay held on March 3rd and 4th have not been finalised but the total raised is expected to be more than \$110,000, falling just short of the amount needed to push the event's overall fundraising tally to \$1 million.

The 2012 organising committee reduced the size of the Lancefield Park walking track and moved tent sites inside the oval boundary which the 34 teams agreed enhanced the atmosphere. They also injected more colour into the ceremonies and acknowledged the founders and history of the event.

Evergreens, a new team of retirees from Kilmore, was the highest fundraiser with \$17,465.95. The Spirit of the Relay award was presented to the inaugural committee.

Relay For Life is a major fundraiser for the Cancer Council Victoria. Last year \$5.2 million was raised by events across the state to fund cancer research, education, advocacy and support services.

Submitted by Nadine Hartnett



## CENTRAL VICTORIAN TIMBER

- Sleepers •
  - Treated Pine •
  - Posts •
  - Hardwood •
  - Plaster •
  - Doors •
  - Redgum Firewood •
- Specialists in house lots and extensions

Phone: 5427 1090

Email [centralvictimber@bigpond.com](mailto:centralvictimber@bigpond.com)

Monday to Friday 8am - 5pm Saturday 9am-12pm

**988 Blackforest Drive Woodend (Old Sawmill Site)**

# NURSERY ROAD

## GARDEN SUPPLIES

Sand | Soil | Mulch | Pots | Plants

Water features | Fire wood

Hire Equipment | Synthetic turf

Sleepers | Wine barrels | Pavers

42 Nursery Road Macedon 3440 Victoria | Email [hello@nrgsupplies.com.au](mailto:hello@nrgsupplies.com.au)  
 Telephone 03 5426 2400 | Facsimile 03 5426 4972  
 General open hours Monday-Friday 7:30-5pm, Saturday-Sunday 9-5pm  
 Arrangements outside these hours can be made.

ecosmar<sup>+</sup>  
Fire

Bio-ethanol fireplaces  
Warm your home not  
the environment



**Bradley's**  
Curtains + Blinds

t 5427 2361 fx 5427 1019  
72 High Street, Woodend VIC 3442

# Olive Jones of Macedon

Restaurant

Bar

Catering

Gourmet Sausage night!!!

Every Wednesday from 6:00pm

Live Music

Great food

Beautiful setting

40 Victoria Street Macedon

P 5426 3700 E brooke@olivejones.com.au

## 2nd Woodend Scout Group opens in Woodend

Scouting has been growing strongly in the Macedon Ranges over the last few years.

In Woodend, participation numbers have doubled in the last three years, and there are now over 130 youth and adults participating in scouting. In 2011 Girl Guides re-started in Woodend after a few years absence.

In order to cater for this growth the Chief Commissioner of the Scout Association (Victoria) has formed a new Scout Group – 2nd Woodend – which commenced at the beginning of this year.

The official launch of the 2nd Woodend Scout Group was held on the 20th February, at the Woodend Childrens Park. In addition the Group celebrated the birthday of Baden Powell, the Founder of Scouting, with games and traditional races. The event was topped off with a sausage sizzle and birthday cake. Baden Powell would have been pleased to know that the Scouting movement he founded over 100 years ago is as popular as ever!

With the commencement of the second group, local families now have even more choice for their children to participate in Scouting.

The 2nd Woodend Scout Group meets on Mondays at the Woodend Scout and Guide Hall, Forest Street. Cub Scouts 5.30pm – 7.00pm (ages 7 to 11 years), Scouts 7.00pm – 9.00pm (ages 10 to 15 years).

For further information, please contact Jenny Johnson on 5427 4968.



**POLARIS**  
Financial Services Pty Ltd  
www.polarisfp.com.au

All the talk in the Mortgage & Finance business is Refinancing.  
So Why Refinance ?

Many home owners these days are assessing their overall financial position and are looking at improving their cashflow, reducing debt and making small or life changes

Refinancing is simply trading in an old mortgage for a new one. The key is to make it suit your goals and objectives and select a loan that is appropriate for your needs, with the right rate and features that suit you. **I can assist you to achieve this.**

You may want to reduce your monthly repayment by finding a lower rate or consolidate credit cards, personal loans or other debts to reduce overall monthly repayments.

You will be amazed at the power of refinancing to reduce debt ...

Debts	Monthly Repay	After Refinance
Home Mortgage \$300,000 @ 7.4% Principal & Interest 30 Yr Term	\$2,077	\$ 339,000 @ 6.49% Principal & Interest 30 Yr Term
Credit Card John \$6000 @ 18%	\$ 90 + fees, Interest	Eliminated
Credit Card Mary \$6000 @ 18%	\$ 90 + fees, Interest	Eliminated
Car Loan \$25,000 @ 12% Principal & Interest 5 Yr Term	\$ 556	Eliminated
Store Card \$2000 @ 25%	\$ 41 + fees, Interest	Eliminated
Total Debt \$339,000 **All figures calculated with Lenders Calculators and are an estimate.	Tot Monthly \$2,854 Total Year \$ 32,248	Tot Monthly \$2140 Total Year \$ 25, 680
** John & Mary have saved \$8,568 in one year !!! & \$ 257,040 over the life of the loan		

Let's Chat, I can help

Peter Willmott

Tel 5427 3330 BH

Office: 50 Urquhart St Woodend



Finance Brokers Association of Australia  
**ACCREDITED MEMBER**

Polaris Financial Services Pty Ltd is an Authorised Corporate Credit Representative  
ACR 416894 of Vow Financial Group Pty Ltd. Australian Credit Licence 320261



## NEW SCOUT GROUP OPENS IN WOODEND

**MONDAYS**

Cubs (7-11 yrs) 5.30pm – 7.00pm

Scouts (10-15 yrs) 7.00pm – 9.00pm

At the Woodend Scout & Guide Hall,  
Forest Street, Woodend

*Cubs and Scouts (boys and girls) have the opportunity to participate in a wide and varied program of activities based on the accredited Scout Award Schemes*

**These activities encourage:**

Self Confidence

Learning by Doing

Building Friendships

Having Fun and Lots More!

For more information please contact  
Jenny Johnson on 0488 445066 or 5427 4968

## Easter services times 2012

### St Ambrose Parish, 47 Urquhart Street, Woodend

- April 3rd - Tuesday in Holy Week at 7.30 pm, Parish Penitential Service
- April 4th -Wednesday in Holy Week, 9.30am: Mass, 11.00am: Individual Confession, 7.00pm Individual Confession, 7.00pm Exposition of Blessed Sacrament, 7.30pm Mass
- April 5th Holy Thursday 7.30pm, Mass of the Lord's Supper and procession of the Blessed Sacrament to Altar of Repose
- April 6th Good Friday - 11.00am Ecumenical Stations of the Cross - Starts St Ambrose, finishing at St Andrews. 3.00pm Celebration of the Lord's Passion
- April 7th Easter Saturday at 7.30pm Easter Vigil Mass
- April 8th Easter Sunday 10.00am Mass. Renewal of Baptismal Promises.

### St Andrews Uniting Church, Forrest Street Woodend

- April 5th Maundy Thursday at 7.30 pm, Tylden Uniting Church (Tylden -Trentham Road )
- April 6th Good Friday Service at 9.00 am, Woodend Stations of the Cross at 11.00 am (starting at St Ambrose Catholic Church finishing at St Andrews )

- April 8th Easter Day Sunday Service 10.30 am Woodend

### St Mary's Anglican Parish of Woodend, High Steet

- April 1st Palm Sunday Blackwood: 8am Eucharist, Trentham: 9am Eucharist, Woodend: 10.30am Liturgy
- April 5th Maundy Thursday- Trentham: 10.00am Eucharist, Woodend: 7.30pm. Eucharist, & Washing & Stripping of Altar followed by Vigil of Prayer
- April 6th Good Friday Trentham: 9.30am Stations of the Cross, Woodend: 11.00am Ecumenical Stations of the Cross, beginning at St Ambrose, and finishing at St Andrew's for Hot Cross Buns! Woodend: 2.00pm Liturgy
- April 8th Blackwood: 8am Eucharist, Trentham: 9am Eucharist, Woodend: 10.30am Eucharist

### Living World Christian Church

- April 8th Sunday Service 10am, 7 Mitchell Court Romsey (NB - No evening service Easter Sunday)

*Naturally Divine*  
For Hair, Body and Soul

Try any colour, face framing foils, stylish cut and blowdry/straighten all for just \$99.00 (long hair extra)

Ladies cuts from \$25.00

Come and see our award winning stylist Tracy, for excellent personalised service.

ph: 54226196 / 0411399493

 **bodywise**  
UNDERWEAR

www.bodywise.com.au  
**1300 66 17 66**  
Shop 19, 130 High St, Woodend

**Wire-free bras, briefs & more ... sizes 10 to 30**



**• wire-free • everyday comfort • all ages • maternity • sports • wardrobe basics •**

## KMA Family History Services

### Bringing the past into the present

Are you curious about your family history, but just don't have the time to devote to searching yourself ?

Let KMA Family History Services, a local genealogy research service based in the Macedon Ranges, do the research work for you. Services we provide-

- A quick response to enquiries
- Superior friendly service by enthusiastic researchers
- A free initial consultation of 1 hour duration to discuss your requirements
- Regular follow-ups during the research period
- An easy to read folder containing the research findings
- Reasonable hourly rates

Let us help you uncover your family story.

Contact Kath, one of our senior researchers, by phone- 0427 946 595 or email [kmafamhistoryservices@gmail.com](mailto:kmafamhistoryservices@gmail.com)

Submitted by Kath Addicoat, KMA Family History Services

**KMA FAMILY HISTORY SERVICES**  
....bringing the past into the present



**Specialist Family History researching services**  
FREE initial consultation

*Uncover your family story*

0427 946 595  
[kmafamhistoryservices@gmail.com](mailto:kmafamhistoryservices@gmail.com)



**GREENTREE AUSTRALIS CONSTRUCTION**  
MODERN HOMES CLASSIC STYLE

**Specialising in design and construction of New England style luxury homes.**

Call David on 0434 937 461 to arrange a walk through of our current project at 38 East Street Woodend

[david@greentreeaustralis.com](mailto:david@greentreeaustralis.com)



 **REGISTERED Building Practitioner**

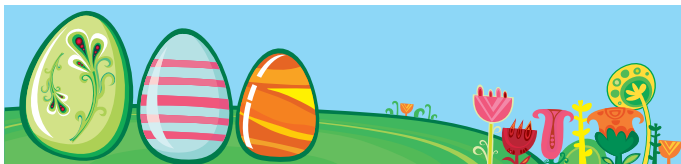
 **Master Builder**



kitchen cook table home  
Blue Orange Concepts

**15% reduction on all  
Tablecloths, Placemats  
& Napkins**

Shop 2 130 High Street, Woodend 3442  
Telephone 03 5427 4500 open 7 days




**www.whitehousenursery.com.au**  
**Victoria's Newest Boutique  
Rare Plant Nursery**  
Specialising in European and South African  
bulbs, Perennials, Ornamental & Fruiting plants.  
We are located between Woodend and  
Daylesford in a little Hamlet named Fern Hill.  
Open Thursday to Sunday 10.00am - 4.00pm  
or by appointment  
This summer we are releasing 65 varieties from our  
Nerine collection, so come and visit us.

**412 James Lane, Jess Exiner  
Fern Hill, 0419 002 651  
Victoria 3458 Peter Harris  
0400 313 703**

**MADDEN'S PORTABLE  
SAWMILLING  
SERVICES & SALES**

Turn your unwanted  
trees & logs into  
VALUABLE TIMBER



Call Craig on 0410 275 714

# Heritage News

Further to Kathy Maxted's interesting interview with Marlene Jager in last month's New Woodend Star, the following may be of interest.

In March 1982, almost thirty years ago to the day I'm writing this, we celebrated Heritage Week in Woodend. Although our Society had been formally set up in 1977, taking part in this was important for our group as it was an excellent opportunity to bring our plans for the Society to the wider community. I can remember taking this photograph of Marlene who was Mayor of Woodend at the time. She was standing ready to receive a young tree which she was to plant in front of the then Shire Offices in High Street, as part of the weeks activities. Our records indicate that some of the children who took part in the tree planting were Adele Merrick, Brian Moody and Neil Thomason. There were probably others. We wonder if any of you are still in the district? A larger version of this photograph is on our Coles display board. If you can add any more information about the people who took part, we would love to hear from you, 54273 361 on Wednesdays or 5427 2523 at other times or call in to the Court House in Forest Street on a Wednesday.

The tree that Marlene planted stood straight and tall for almost thirty years but unfortunately, met an untimely end during one of our recent storms. Peter Jones and his ever helpful staff at the Shire have replanted a tree and the original plaque is still in place. If we can find some of the people who helped Marlene on that day, we will hold a small rededication ceremony.



*Did you help Marlene plant this tree 30 years ago?*

*If so please contact Woodend & District Heritage Society*

Submitted by Janet Hawkins



**Top Hat  
Productions**

- \* 8 mm / 16 mm Film to DVD
- \* VHS/Mini DV/ Hi 8 to DVD
- \* Filming/Editing Services
- \* Corporate & Special Events Productions



AVPA Multi-Award Winners  
Accredited Producers

**PH: 03 5422 3930**

# SPORTS NEWS

## Calling All Basketballers!!

*All ages, all skill levels & new players welcome*

Macedon Ranges Basketball Association registrations are now open for the new season starting April 16th. Please call Lisa James: 0418 108 284, email: registrar@mrba.org.au, or Google 'Macedon Ranges Basketball Association' for info on games and teams for all age groups: Under 10s, Under 13s, Under 15s, Under 18s, Open Men's, Open Women's, Mid-Week Ladies, All Abilities.

Submitted by Clair Green

## Clubs Purchase Lifesaving Equipment

The Woodend Heskett Football Netball Club and the Woodend Cricket Club have purchased an automatic defibrillator to be kept on site at Gilbert Gordon Oval.

Woodend Heskett Football Netball Club President, Jock Allan said the precincts social committee purchased the potentially lifesaving equipment in the lead up to the 2012 season.

Cardiac arrest often strikes without warning and the sooner victims are given treatment, the greater their chances of survival. President of the Woodend Cricket Club, Ronan Hume, said the machine provides a simple tool to assist with a medical emergency,

"You do not need specialised training to use a portable defibrillator; it can be used by anyone. It provides clear voice instructions about how to use it. All you have to do is open the case and it will tell you where to place the pads and what to do next.

"We are pleased to be able to provide our players, supporters and the numerous other user groups who use Gilbert Gordon Oval with the peace of mind that a defibrillator is available on site should they need to use it." he said.

Submitted by E. McCormick on behalf of Woodend Heskett Football Netball Club

## A Challenge Worth Running

Macedon Ranges Running Club (MRRC) has joined forces with the Rotary Club of Gisborne to present a 15km challenge run. Graduates of the MRRC's Start Running Group and current participants of the Intermediate Running Group will take up the challenge running from Riddells Creek to New Gisborne. We invite runners, both local and further afield to participate on Sunday 29th of April.

Funds raised will be directed to: MS projects via the Rotarian Action Group for Multiple Sclerosis Awareness in association with MS Australia and the Australian Rotary Health Research Fund., SES, CFA, Windarrang, local schools, Australian Rotary Health Research, Global Polio Eradication Initiative, the fight against Malaria in PNG, Kyneton Foodbank and Macedon Ranges Wildlife.

Runners will experience a variety of running surfaces, taking in breathtaking views and scenic state forest landscapes and finish at New Gisborne Steam Park. There are marshals and drink stations on the course as well as a sumptuous BBQ, fresh sandwiches and refreshments at the end of the run. Register for the GREAT Macedon Ranges Challenge run event at [www.gisbornerotary.org.au](http://www.gisbornerotary.org.au) and receive up to date information on Facebook at Macedon Ranges Challenge Run. For enquiries contact Lisa on 0423 022 332.

### Macedon Ranges Running Club presents a Marathon Running Information Session

Macedon Ranges Running Club is having a free information session about the Gold Coast half and full marathon in Barrington on Friday 30th of March at 7pm. Information will be about training programs, basic nutrition, gels, sports drinks, where to stay and what buses to catch, group entry, training buddies and experiences from people who have run this before. Even if you're not doing the 2012 Gold Coast marathon, come along and arm yourself with information and tips. Call Georgia Schembri on 0414 850 353 for more information.

Submitted by Lisa Cole

## STONELAYING & PAVING



**Stonemason & Paver**  
specialising in

- Retaining Walls
- Drystone Walls
- Stone Houses
- Paving
- Over 20 years' experience

**Cameron Dunn**  
Ph (03) 5427 4778 Mob 0429 162 589

## TRADE & SERVICE DIRECTORY

### ANTENNAS

#### ANTENNA EXPERTS



- Digital TV antenna's & extra outlets
- NextG/Optus 3G signal boosting  
LESS DROPOUTS, FASTER DATA SPEEDS
- Satellite installation
- Ph & data cabling



0411 155 617

### CHIROPRACTOR

**Mark Brown**  
*30 years experience*

- Muscle realign & stretch techniques
- Gentle spine adjustments
- Elbows, wrists, kness, shoulders
- Headaches, migraines & athsma

Upstairs at Westpac Bank, 75 High St

Phone: 0407 526 403

### HOME MAINTENANCE

*Home maintenance & landscaping service including decking, pergolas, carpentry & painting.*  
**Stuart 0409 150 629**  
**AH 5427 2465**

### PAINTING

**Painting & decorating**  
Residential & commercial  
Rendering  
Prompt & professional

**Rigoni Painting**  
Phone 0430 371 001




### TAXI SERVICE



**Your Local Taxi Service**  
Bookings: 9310 5422

# TRADE & SERVICE DIRECTORY

## CLEANING




Not enough hours in your day?  
Need help managing  
your home?

---

**Stephen Farrell**  
Personal Services

Very reasonable rates  
Through out the Macedon Ranges  
Phone 0419 526 275



## CIVIL CELEBRANT



'A creative,  
inspiring and  
professional  
experience.'

**LOUISE POTTER**  
CIVIL MARRIAGE CELEBRANT

MOB: 0438 302 218    pinc@bigpond.net.

## DRESSMAKER

**Beryl's Tailoring**  
DRESSMAKING, ALTERATIONS,  
BRIDAL, EVENING & DAY WEAR,  
LADIES AND MEN'S REPAIRS



Beryl Bachelor  
QUALIFIED DRESSMAKER, NEWHAM  
BY APPOINTMENT ONLY  
MON TO FRI 9 - 5

5427 0568    0418 510 179  
berylb@vic.chariot.net.au

## FENCING & GATES

### Fencing & Gates

- colourbond
- timber
- picket steel & timber
- period style fencing
- all types of gates
- retaining walls

ph: 0419 005 185    5427 1192

## GARDEN MAINTENANCE

**Hyland Brothers**  
Property Maintenance & Services

- Mowing (includes ride-on)
- Edging, Pruning & Trimming
- Clean-up & Rubbish Removal
- Handyman Work/Odd Jobs
- Weeding & Mulching
- Servicing Macedon Ranges

*Need a quote? "Ask the Hyland Brothers"*

Col 0428 271 935 - Tex 0422 138 368  
or 5427 1044



## HOME INTERIORS


DECORATE  
RENOVATE  
Your Home or Room  
With Style,  
Design + Colour



Present Well  
HOME INTERIORS

Call Danielle 0400 664 231    pwhi.com.au

## METAL GATES



BVM METALCRAFT  
Ben McKee  
OLDWORLD & MODERN STYLE  
GATES & FENCING  
bvmmetalcraft@hotmail.com  
04 222 88 768

## PAINTING



**BD CROSBIE  
PAINTING**  
Ben    T: 5427 2164  
M: 0431 205 576

Household & Commercial  
Interiors & Exteriors  
Painting, Staining & Oiling  
Decking, Stairs & Hand Rails  
Free Quotes

## PAINTING

**GEE'S  
Painting etc.**



Call Steven  
0402 079 482

## PHYSIOTHERAPIST

**Kyneton Physiotherapy  
Robert Rouse**  
B. App. Sc. (Physio) Member A. Physio. Assoc.  
Registered for Comcare, TAC, W/Cover, DVA  
30 years treating Woodend folk  
74 High St. (Corner New St.), Kyneton  
5422 2290

## PROPERTY & GARDEN MAINTENANCE

ENJOY YOUR PRECIOUS WEEKENDS

*Josh's Home Maintenance trading as*  
**TERRY'S GROUND CREW**

Josh 0412 796 578

*\*\*Macedon Ranges vouchers accepted*

ALL MOWING AND GARDEN MAINTENANCE

## PSYCHOLOGIST

**Sam Luxemburg**  
Registered Psychologist

- Counselling in Woodend & Thornbury (Medicare rebate available)
- Counselling Training
- Myers-Briggs personality testing

Phone: 0428 270 401  
www.luxcollege.com.au

## TREE SERVICES



**A&P Tree Services**

- tree pruning / removal • stump removal
- tree planting / transplanting • rope & harness climbing
- confined space removal • fully insured

Professional commercial & residential tree maintenance  
all work carried out by qualified arborist

Call Anthony 0417 059 969

## TRENCHING

**ASHBY'S TRENCHING**

- Drainage & storm water
- Site levelling
- Cable and pipe laying
- Fencing

Phone Mark 0427 973 360

## YOGA

**\$5 YOGA**



Saturday 10am  
Wednesday 12.30 (starting 4th Jan)  
Where: Woodend Library, The Big Hall space.  
Teacher: Jahne Hope-Williams  
(Children welcome - no booking required - \$10 family)  
Text: 0402 088 170 P/F 0354 273 518  
or yogafirst@netcon.net.au

# SPORTS NEWS

## Locals day at the local footy & netball

Football and Netball is back at Woodend in April and the Hawks are throwing open the gates in Round 1 to encourage all locals to come and cheer us on.

Just clip out the token below and show it at the gate for free entry to the Round 1 clash against the Rockbank Rams on Saturday April 14th. The Under 18's kick off the draw at 10am with the senior boys starting at 2pm.

It is a great day's entertainment at Gilbert Gordon Oval and we are proud of the family atmosphere we have down at the club on matchdays.

There'll be a jumping castle for the kids, the Green Bean Machine will be brewing coffee all day, join the new coaches around the huddle at the quarter breaks, and toot your horn for the goals. The Famous Hawk Burger is back bigger and better, and cold drinks are available to wash it down all day.

Test out our new weather shelter around the netball courts while cheering on the girls at 10:30am, 11:30am & 12:30pm.

We also have the great privilege to raise the 2011 Premiership Flag won by the Under 18's.

Join us for afternoon tea from 2pm in the social rooms and watch the Senior footballers have their first competitive run for the 2012 season. Memberships, sponsorships and apparel will be on sale on the day.

*Woodend Hasket Football & Netball Club - My Town - My Team*

Submitted by Jock Allan



24 Seven Alarms Aust Pty Ltd

- Alarms installed, Serviced and Monitored
- Data cabling and phone line installation
- Medical Alert Systems
- Access Control Systems PSBL: 732-083-90s
- Digital Video Surveillance CCTV packages: domestic and commercial

1800 247 111/ 03 5427 4411  
sales@24sevenalarms.com.au

jigsawstairs@optusnet.com.au  
0408 153 124

## JIGSAW STAIRCASES

P.O Box 93 Woodend Vic 3442

*Find more Sports News  
on pages 30*

# LOCALS DAY

woodend Hasket Footy + Netball



## GILBERT GORDON OVAL ROUND 1 ACTION - SATURDAY APRIL 14TH

Jumping castle for Kids  
Green Bean Machine - Real Coffee!!!  
The Famous "HAWK BURGER" is back.  
Undercover Seating  
Stand Around the Huddle !! ... Toot Your Horn !!  
AFTERNOON TEA FROM 2PM IN ROOMS - ALL WELCOME

**FREE ENTRY**  
FOR LOCALS WITH THIS VOUCHER  
(CUT OUT AND SHOW AT THE GATE)