

# THE NEW WOODEND STAR



Circulation of 3340 throughout  
Woodend postal district, Newham, Heskett, Ashbourne,  
North Woodend, Hanging Rock, Carlsruhe, Cobaw.

**AN INITIATIVE OF THE ROTARY CLUB OF WOODEND**

June 2012

A Monthly Community Periodical

First Publication 1997

Volume Sixteen No 4



## June is Rotary Bowelscan month

Australia has the world's highest incidence of bowel cancer – 1 in 12, both men and women, will be diagnosed with bowel cancer by the age of 85. Age is an important factor. The risk begins at age 40, doubling every 5 years and more rapidly as the person gets older.

Statistics show 90% of bowel cancers can be successfully cured if detected at an early stage. Early detection leads to an improved prognosis and less severe treatment.

Bowel cancers begin as polyps. Polyps are growths occurring in the lining of the bowel. Because polyps can develop into cancer, early diagnosis and removal of all polyps is important. More than 75% of people who develop bowel cancer do not have a family history of the disease.

For the over 40's Bowelscan is an easy, inexpensive method for early detection. Annual Testing is strongly recommended for all men and women over the age of 40.

Rotary Bowel Scan Kits will be available from the Woodend Pharmacy from the 1st of June for 4 weeks. The kits are \$10.00 each and can be returned to the pharmacy to be sent out for processing.

Australian Rotary Clubs have issued approximately 150,000 kits during their annual Colorectal Screening programs. Since Bowelscan commenced, it is estimated that more than 1,000 people with bowel cancer and 5,000 with polyps have been detected.

The Rotary Club of Woodend will be running the Bowelscan Program in conjunction with the Woodend Pharmacy as a Community Awareness Project.

Be kind to yourself, look after your health. For further information, go to [www.bowelcare.org.au](http://www.bowelcare.org.au)

Submitted by Howard Bradfield for Rotary Club of Woodend



8-11 June 2012

**WOODEND**  
**winter**  
**arts**  
**FESTIVAL**

[www.woodendwinterartsfestival.org.au](http://www.woodendwinterartsfestival.org.au)

The collage features several images: a portrait of a man, a close-up of a decorative metal piece, a hand holding a fountain pen, a man playing a violin, a fire, a cup of coffee with latte art, a piano keyboard, and a portrait of a woman.

## Fireworks and free events means Festival open to all

The Woodend Winter Arts Festival will open with the traditional big bang fireworks at Buffalo Stadium Oval on Friday 8th of June, but it's not the only free event in town with festival programmers ensuring everyone can get involved.

International artists have started arriving in the town – many staying with local volunteers and fellow performers as well as accommodation venues. The small army of volunteers who make the Festival weekend run smoothly have begun work – including trips to the airport to collect the interstate and international musicians and presenters.

This year's Festival program has proved more popular than ever – with tickets selling faster than any other year and three events sold out by mid May. Happily some of the most popular program items (such as the Cantatas with Max Gillies and Barry Jones) and the recitals have been scheduled more than once to meet demand.

As part of the Festival's mission to foster a love of great music, all tickets to music events for those aged 17 and under are just \$15. It means that the region's young musicians can see the very best –including guitar virtuoso Slava Grigoryan, Italian violinist Davide Monti (playing the ever popular Vivaldi's Four Seasons), pianist and composer Ian Munro, the Tinalley Quartet and visiting classical wind quintet Osmosis.

One hour performances ensure attention spans can be maintained for very young music enthusiasts.

The Lions Club will turn the snags for the fireworks BBQ ensuring this year food will be available from 5.30pm (fireworks at 6.30pm). BYO rugs, beanies and thermal underwear and be prepared for busy traffic in the area between 5.30pm and about 7.30pm. Local police will be keeping an eye on traffic.

*continued on page 2*

# BEAUTY IN TOUCH

Classical Beauty Therapist – Kerry Robinson

- Deep Cleansing Facials ▪
- Waxing ▪ Manicures ▪ Pedicures ▪
- Eyelash tinting ▪

Please call 0412 479 901 for an appointment  
40A South Road, Woodend

## The New Woodend Star

An initiative of the Rotary Club of Woodend Inc.  
The Bank, 75 High Street, Woodend, Vic. 3442  
ABN 32 685 225 161 No. A0021518E

Layout & printing by Collier Office & Business Assist  
**EMAIL articles preferred: sales@collierooffice.com.au**

**Circulation: 3340 copies throughout Woodend and district**  
Disclaimer: Articles and comments published in this newspaper are the result of contributions from local groups and relevant news articles pertinent to the Woodend district. Neither the Rotary Club of Woodend Inc., The New Woodend Star nor the editorial team are liable for any mistakes, omissions, or misprints. It prints and makes no representation as to the truth or accuracy of any description, and accepts no liability for any loss suffered by any person who relies on any statement contained herein. The opinions expressed are not necessarily those of the editorial team. The committee reserves the right to omit, reject, cut, alter or otherwise re-work submitted articles to make them suitable.

Committee: Barry Napthine, Ivor Johnson, Claudia Green, Brendan Watters, Alexia Downie, Sue Macklin & Jane Watters

### Closing date for inclusion of articles or advertising for each issue is the 15th of the month prior to publication Information for Advertisers

Prices for advertising 2012 All rates include GST & are priced per month.

**Business card** (55mm x 90mm) .....\$52 inc GST

**Trade Page** .....\$38 inc GST

**Quarter page** (90mm x 134mm) .....\$105 inc GST

**Half page** (134mm x 190mm).....\$198 inc GST

**Full page** (190mm x 277mm) .....\$338 inc GST

**Insert** (of your printed brochure).....\$246 inc GST

Advertisers: please note – it is in your interest to book and pay for a year in advance, as a 10% discount applies to any full year pre-paid booking. Any existing pre-paid ads will revert to the new rate on completion of the pre-paid period.

Advertising bookings to be made with Alexia Downie on 5427 3092 or sales@collierooffice.com.au. Accounts queries can be made to Sue on 5427 4089 or nws@johnsonwoodend.com.au Mail should be directed to: New Woodend Star, C/- The Bank, 75 High Street, Woodend 3442.

#### Woodend Star Publication Dates for 2012

July	July 2 <sup>nd</sup>	October	October 1 <sup>st</sup>
August	July 30 <sup>th</sup>	November	October 29 <sup>th</sup>
September	September 3 <sup>rd</sup>	December	December 3 <sup>rd</sup>

Changes to advertisements, new advertisements or cancellations must all be made by email or in writing. All advertisements will be placed and charged for until notified otherwise.

#### SUBSCRIBE TO THE NEW WOODEND STAR

Do you live outside the New Woodend Star distribution area? Be sure to receive your copy every month by subscribing. A yearly subscription of 11 issues is just \$34.50. Post to New Woodend Star, C/- The Bank, 75 High Street, Woodend 3442.

Name: \_\_\_\_\_

Address: \_\_\_\_\_

Phone: \_\_\_\_\_ Enclosed: Cheque/Money Order for \$34.50

Continued from page 1

Free events this year aim to appeal to children, 'big talkers' and visual arts. The traditional Festival storytelling event with a popular author at Woodend Library will this year feature the very animated Bernard Caleo, comic book artist, movie maker and, sometimes, even a comic book character himself.

Those that love books and illustrations are in for a special treat with the Dromkeen exhibitions – the last time it will be shown in our region before it is moved to the State Library at the end of this year.

Free events include:

- Opening Night Fireworks – Buffalo Stadium Oval – Friday 8th of June @ 6.30pm (Lions Sausage Sizzle from 5.30pm)
- Paper Theatre – Comic Book Story Telling with Bernard Caleo – Woodend Library, Saturday 9th of June @ 10.30am
- Yarns at the Pub – with Jan Wositsky – Vic Hotel, Saturday 9th of June @ 5.30pm
- Mini Maestros with Jo Irwin – sessions for kids from 6 month to 4 years on Saturday 9th and Sunday 10th of June – check on-line for session times
- Loved Favourites from the Dromkeen Collection – Black Anther Gallery – all weekend
- Pottery Exhibition – Macedon Ranges Potters – Woodend Community Hub – all weekend
- Art Exhibition – Mt Macedon Artists – Woodend Neighbourhood House – all weekend

Prices for events vary, bookings essential including for free events. Please check the website for sold out events to avoid disappointment. Bookings and information at www.woodendwinterartsfestival.com.au or phone 0428 271 272 Tuesday to Saturday during business hours.

Submitted by A. Patterson for WWAf



**Grantra**  
HOME IMPROVEMENTS  
Specialising in Bathroom Renovations

PO Box 736, Woodend 3442  
**0418 175 877**  
www.grantrahomeimprovements.com.au

Master Builder  
REGISTERED Building Practitioner



Feel sensational  
at The Spa

Our team of professional and passionate therapists can assist you with all of your needs... From essential waxing to purely indulgent facials, massages, body treatments and more, we are here 6 days a week.

**The Spa**  
Beauty Therapy Centre

Gisborne | 3/31 Brantome St Gisborne 3437 | 03 5428 8800  
Woodend | 41 Anslow St Woodend 3442 | 03 5427 3322  
www.thespa.com.au

# Woodend Community Farmers' Market

**Saturday 2nd of June 9am to 1pm**

Come on down to the farmers' market this month for a great selection of locally farmed & produced items.

Look for beetroot, Dutch carrots, pumpkins, Jerusalem artichokes, greens, greens & more greens, cabbage & more in season now.

Around 40 stalls to shop from, including fresh produce, meats- beef, lamb & pork, preserves, organic sourdough bread, Macedon Ranges & Heathcote wines, extra virgin olive oil, honey, free-range eggs, flowers, poultry, stockfeed, emu oil products, plants, fudge, worm products & much more.

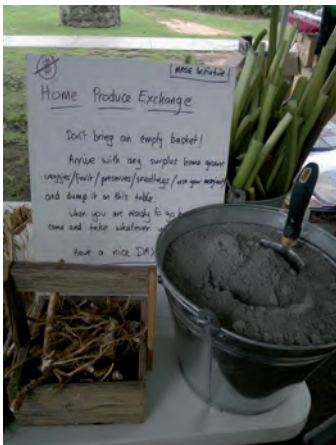
Listen in to the lovely sounds of Sarah Wilkinson while you enjoy a bite to eat or a cup of locally roasted coffee or a hot chai, plus free face paint for the kids from Fiona Fraser.

Macedon Ranges Sustainability Group stand offers you the ability to join as a member, find out information about local sustainability happenings or trade your excess produce at the Home Produce Exchange table.

Dogs welcome on a leash, please bring your bags, baskets & trolleys.

For more information, please call Meggs on 0407860320.

Submitted by M. Hanes, Victorian Farmers' Markets Association



# Great Place Woodend

*– Our Community Owning Our Future*

These days, great places don't just happen. They come as a result of people within communities being committed to owning their future and taking action to ensure that happens.

Take Woodend for example. The committed people and excellent community effort to build the children's park, the coming together of the community around property development, the work on renewable energy, our farmer's market and the new racecourse walking track are but a few of the initiatives generated by individuals and groups from within the Woodend community.

While there are many individual efforts such as those above that contribute to the community, there are also times when individual efforts are better to combine to maximize their contribution to what might be best for the community as a whole.

This is most evident when we consider the broad scope and potential disruption of issues like secure access to affordable fuel and energy, housing and infrastructure development, extreme weather events, biodiversity protection, transport security and the rising potential for economic downturn.

To tackle these types of issues demands the community working as a whole. In doing so we understand what will or may impact our community and develop an overall, inclusive strategy to embrace all aspects of community - the social, economic, ecological, built form, 'sense of place',

*continued on page 4*

## Woodend Rainfall Report 2011

Each month we add the rainfall details and the year to date total. Our rainfall report shows, **2005, 2006 2007 2008 2009 and 2010** comparisons. Please note that your own rainfall readings may not exactly match these.

	2007	2008	2009	2010	2011	2012	
January	83.5	17.1	0.08*	54*	227.5	31	Jan
February	27.4	22.1	2.5*	71.5*	115.0	133	Feb
March	35.7	25.4	42.5*	121*	35	84	Mar
April	20.2	20.4	51*	45	63.5	35.5	April
May	95.7	43.7	30.5*	39	73.5		May
June	105.1	88.7	66.5*	98.5	69		June
July	83.3	112.5	76.5*	87.5	82.5		July
August	34.8	52.2	107.5*	148.5	56		Aug
Sept	49.8	42.0*	88.5*	97	98.5		Sept
Oct	12.1	13.0*	46*	154.5	86		Oct
Nov	91.0	67.2	99*	193	82		Nov
Dec	101.2	96.0*	60*	93	120		Dec
<b>YTD:</b>	<b>739.8</b>	<b>600.3</b>	<b>670.5</b>	<b>1202.5</b>	<b>1119.5</b>	<b>282</b>	<b>YTD</b>

For the year of 2011 there was rainfall of

**1119.5mm**

1 inch = 25.4 mm therefore the total year 2011 is 44.07 inches



# June Sale

Spend \$50  
or more and enter the  
draw to win a  
**6 piece  
Global Knife Set**

Shop 2 130 High Street, Woodend 3442  
Telephone 03 5427 4500

Open 7 days

education, energy and transport capabilities that make a great place.

Also, communities can often know exactly what they don't want and be very good at activating that message. However, knowing what they do want, and generating strategies to achieve that as a whole community is the challenge communities are facing in these times of rapid and complex change.

That is the message of a new initiative emerging in Woodend called Great Place Woodend and is part of a wider Victorian program being run by Great Place Australia ([www.greatplaceaustralia.com.au](http://www.greatplaceaustralia.com.au)) designed to spread throughout the Macedon Ranges.

Great Place Woodend is a 'group of groups' consisting of representatives from a wide variety of groups across Woodend and is being formed based on six principles:

1. Leverage local knowledge and initiative – form an umbrella 'group of groups' (representatives currently include Rotary, Lions, Macedon Ranges Sustainability Group, WISE, BATA, Cobaw Health and concerned individuals);
2. Affirm and think of 'our place' as a whole place;
3. Be clear on the value being added;
4. Catalyse self-organisation at the local level;
5. Generate a whole community strategy;
6. Work in sync with the power of supporting organisations to generate community value.

Great Place Woodend is in its formative development and is seeking to provide information on a draft 2012 program and gain feedback from the Woodend community. In that regard it will be holding two information sessions that are open for all to attend from 7pm- 9pm on Wednesday 13th of June, and 7pm to 9pm on Thursday 5th of July (venue to be announced).

To manage numbers on each night, it is requested that anyone interested in participating in the information session email: [greatplacewoodend@live.com.au](mailto:greatplacewoodend@live.com.au) or call 0402 707 133 to register their attendance. Please quote which night you will be attending.

Submitted by Andrew Wilson-Annan, Great Place Woodend

**All local groups, clubs and committees are invited to submit articles for publication**

## Truck & Bobcat Hire

Paving Turfing Rockeries  
Paling & Colourbond Fencing  
Watering Systems Retaining Walls  
All of your garden and driveway  
construction catered for

CD & MC Muir Pty Ltd  
[craig@bobcatcraig.com](mailto:craig@bobcatcraig.com)

0417 331 085 5427 3095



# Vintage Asian Furniture

## GINKGO FURNISHINGS

### Exclusively Online

Beautiful, often one of a kind pieces of antique furniture to add style & character to your home.

The collection is available exclusively online with free delivery on pieces of furniture over \$100 to buyers in the Macedon Ranges for a limited time.



[www.ginkgofurnishings.com.au](http://www.ginkgofurnishings.com.au)

# Blackbird Cakes

## Celebration Cakes

Birthday Christening

Wedding Anniversary

Engagement Corporate

and any other reason to celebrate!

*Call Sharyn  
for a consultation*

M:0438 122 500

BH: 5427 1692

[www.blackbirdcakes.com.au](http://www.blackbirdcakes.com.au)

## Warner's Jewellers- A family tradition

*In Warner's Jewellers on High Street, Woodend, Wayne Warner recounts his family's 100-year involvement in the trade.*

"My grandad used to come into the workshop and for five out of the eight hours he was there he'd fall asleep at the bench with his head on his arms. Even as a 15-year-old apprentice, I knew it wasn't up to me to tell him not to sleep, but I often had to wake him because I had a lot of questions. I loved him, and I knew that he was just filling in time."

Charles Edward Warner set up as a jeweller in the Manchester Unity building on the corner of Collins and Swanston streets in 1912. The workshop had no retail section but specialised in making and repairs. With five employees, including his son Dennis (known as Billy), the Depression took the wind out of a thriving business. "Grandad was a very gentle, quiet man without the heart to sack his employees during the Depression. He'd have them melt down the jewellery and remake it, just to keep them employed. It dragged the business down of course, and finally he had to let them go. It was very hard for him," says Wayne.

As a second-year apprentice, Billy joined the RAAF during the war years and made instruments for Catalinas in Darwin. After the war he returned to Melbourne and finished his apprenticeship. "During the war Dad used to make jewellery and stuff out of old pennies and bolts etc as a sideline, and that paid for his smokes and beer. I've got a few of his bits and pieces including his badges and hat."

Billy then apprenticed Wayne in 1962 and Charles retired in 1964. Billy moved the business to York House, which faced Lt Collins street, where young Wayne's



lunchtime entertainment was to warm a few pennies in the burner and throw them down onto the street where surprised lunchtime walkers would stop to pick them up. Ooh. Hot pennies.

"Back then, a lot of business was done in pubs, and downstairs in the lounge of the Hotel Australia there'd be money turning over and a bit of diamond trading done. Dad could be gone for as long as four hours and as a 15 year old, I was up in the little workshop trying to serve customers with grandad asleep at the bench."

In the '80s, Bill and Wayne both relocated to Woodend. "I reckon Dad just went for a drive one day from his home in Coburg and found Woodend. He semi-retired out here and I came too. He started in the shop next to Bourkie's Bakery that is now the hairdressers and he shared the space with Lynne Lloyd who sold fashion and accessories. It was the first time we'd had a retail space. I was still running the Melbourne shop."

Billy retired to Queensland in the early '90s and after much deliberating, Wayne sold the Melbourne business (which has now closed) and took over the Woodend business. Front and centre of the store is a display case with Charles Warner's shop sign, some photos and antique tools. Under the counter Charles's original early century ring design books.

"Past Melbourne customers are still a big part of our business and it's a privilege to make engagement rings for the grandchildren of my grandfather's customers. Reputation is the strength of the business," says Wayne.

The rear workshop, warmed by a cozy fire, is the antithesis of its glistening front. Brett, now a second-year apprentice, is resizing a ring under a fluorescent light and beside him are a visor, grinder, polisher and torch. The walls above him are lined with footy and cricket paraphernalia.

As the next proprietor, older brother Glenn looks at his challenges. "The bulk of our work is repairs and remakes. What we're seeing a lot now is jewellery that was bought online and turned out to be faulty. Many countries don't regulate the sale of gemstones so "clean stones" often turn out to have a crack that has been filled with resin to make them look like a cleaner stone." Glenn enjoys designing and creating, and in 2011 won the Regional award for the World Skills competition with his ring design. His age prevented him from competing further.

Eying the row of old Singer sewing machine drawers that hold little envelopes for work to be done, Glenn smiles, "First thing I'll do is upgrade the filing system."

Written by Kathy Mexted

**WARNER'S JEWELLERS**  
EST. 1912 ~ 4th Generation Jewellers

**Manufacturing Jewellers**

**Jewellery Repairs**

**Watch & Clock Repairs**

**Valuations & Rethreading**

97 High Street, Woodend

5427 1573

## Chance to have your say on our water future

Western Water is calling on Woodend customers to have their say on its draft five-year plan for managing water in the region.

The Water Plan 2013-18 will set out plans for upgrading, maintaining and building new infrastructure, as well as pricing and service standards. "We need to hear from our customers about their views and priorities so we can come up with the best possible plan for our region," Western Water's Managing Director, John Wilkinson, says.

"We want people's thoughts about how we can cope with our growing population, look after our water resources and decide which infrastructure projects are most important," he says.

"The final plan is due to go to the State Government's water industry regulator, the Essential Services Commission, in September, so we are asking for feedback before the end of July."

To give their feedback, Western Water customers need to register on the website, [WesternWater.com.au](http://WesternWater.com.au), to access a draft plan summary and answer a range of questions.

Anyone who doesn't have access to the Internet can call Western Water on 1300 650 425 to register and receive a copy of the draft plan in the mail.

"Everyone who registers will go into a draw to win \$500 off their water bill, or an equivalent prize," Mr Wilkinson says.

Submitted by K. Smith for Western Water

# CENTRAL VICTORIAN TIMBER

- Sleepers •
  - Treated Pine •
  - Posts •
  - Hardwood •
  - Plaster •
  - Doors •
  - Redgum Firewood •
- Specialists in house lots and extensions

Phone: 5427 1090

Email [centralvictimber@bigpond.com](mailto:centralvictimber@bigpond.com)

Monday to Friday 8am - 5pm Saturday 9am-12pm

**988 Blackforest Drive Woodend  
(Old Sawmill Site)**

**SPEND & SAVE SALE**  
Children's Clothing  
**Starts 1st June Ends 30 June**

**\$100 SAVE 10%**  
**\$150 SAVE 15%**  
**\$200 SAVE 20%**  
**\$250 SAVE 25%**

*tilly bella*  
27 High Street, KYNETON ph: 5422 3888

**DON'T FORGET TO MENTION  
THE NEW WOODEND STAR  
WHEN SUPPORTING OUR ADVERTISERS**

Joan P Jane **0403 046 048**  
**PSYCHOLOGIST** **5426 4165**

- Stress • Post Traumatic Stress •
- Anxiety • Depression • Relationship • Family •
- Mental Skills Training • Sport • Self Esteem

The Bank  
75 High St.  
Woodend 3442

**Bulk Billing**  
(Medicare - DVA - GP Referral)  
Provider Number 2827013A  
[joanjane@bigpond.com](mailto:joanjane@bigpond.com)



**RIVERWOOD GROUP**

## Accountants, Advisors & Planners

### Office Locations:

111 High Street, Woodend Ph: 03 5427 8000

2/19 Bourke Street, Kilmore Ph: 03 5782 1273

email: [admin@riverwoodgroup.com.au](mailto:admin@riverwoodgroup.com.au)

website: [www.riverwoodgroup.com.au](http://www.riverwoodgroup.com.au)

Riverwood Group can offer a *Total Financial Solutions* package for you and your family. Take a look at some of the services we provide:

### Taxation

All your taxation requirements to suit individuals and small businesses.

### Investments to Create & Protect your Wealth

Managed Funds, Indexed Funds, margin Lending and more

### Planning for Retirement

Allocated Pensions, Centrelink Benefits and Payments

### Stockbroking

Recommended lists, broking facility available, share updates

### Superannuation & Rollovers

Advice, placements, Self-Managed Super Funds and Eligible Termination Payment Advice

### Other Services

Home & Investment Loans, Business Loans and Leasing, Income Protection, Life Insurance, Professional Indemnity, Estate Planning and more.

## Testing the wind – have your say online

Recent changes to legislation introduced by the State Government have banned wind turbines from the Macedon Ranges Shire. The government has acted without producing evidence of community support for the ban.

To gauge community attitudes towards harvesting wind energy in the Macedon Ranges, the local volunteer group WISE (Woodend Integrated Sustainable Energy) has launched an online survey.

The survey also seeks to measure support for the WISE group's specific proposal for three community-owned wind turbines, to be situated in the pine forest approximately 7 km south of Woodend township.

All Macedon Ranges residents are invited to learn more about the WISE proposal and have their say at <http://wisegroup.org.au/>

To test the viability of their proposal, WISE used State Government funding to purchase and erect a 60-metre monitoring mast on the site of the old timber mill on Black Forest Road.

Wind speed data collected since 11th of November 2011 shows that if three turbines had been operating since then, the local community would have received the following benefits:

- 6,633,000 kilowatt-hours would have been generated – enough energy to sustain 3,330 homes.
- \$796,000 revenue would have been generated. WISE would invest all profits from the wind park in other local sustainability projects.
- 7,200 tonnes of carbon dioxide emissions would have been avoided – thereby reducing global warming.

Live data from the monitoring mast may be viewed at the Woodend Newsagency or on the WISE website.

WISE would like to thank the 50-plus people who attended the recent fundraising dinner at RedBeard Historic Bakery in Trentham. \$3000 was raised so that WISE can continue to work to bring clean, renewable energy to the Macedon Ranges.


The results of the online survey will be publicised later this year.

Submitted by Alan Reid, WISE member.

## THE NEW WOODEND STAR the voice of the community

Paul Cox  
0408 638 516

REC  
13242



**Kyneton Data & Electrical**

Your Local Electricians

INSTALLATION, REWIRING, REPAIRS & MAINTENANCE OF  
ALL ELECTRICAL, TELEPHONE & COMPUTER EQUIPMENT

## Rotary - Celebrating 25 years

Recently, the Rotary Club of Woodend held its anniversary dinner, celebrating 25 years since the club was chartered in 1987. It truly was a great night with many guests, charter members, past members, District Governor, and Rotarians from Kew on Yarra, Gisborne and Kyneton clubs.

The venue at Macedon Spa looked fantastic with a large Rotary wheel used at the charter night 25 years ago, club banners and table decorations adding a nice touch with a harpist entertaining the guests.

There were a number of highlights on the night with an 'on the the couch' recollection of activities and achievements by Honorary members Ern Lester Smith and Ivor Johnson with David Wells from Kyneton Rotary who helped form the Woodend club 25 years ago.

The audience heard of the clubs many achievements over 25 years including assisting the formation of the Bone Marrow registry, humanitarian projects in PNG and the many local community projects and inventive fundraising activities.

Rekindled friendships were visible as past members walked in and faces lit up with the general feeling maintained throughout the night.

A nice surprise on the night was Grant Hocking being awarded a Paul Harris Fellowship for services to Rotary.



Peter Willmott, (L) and Grant Hocking (R) both recognized at Woodend's Rotary Club 25th Anniversary Dinner

Grant has been a tireless worker for Rotary holding board positions and was President of RC Woodend in the 2007-08 year. Grant has been involved at District level as Director of Community Service for 2 years. Paul Harris was the founder of Rotary over 100 years ago and this award recognizes services to Rotary.

Another surprise was Peter Willmott being awarded a Royce Abbey Award, for enthusiasm & commitment over the last few years. Royce Abbey is a member of Essendon club and a past Rotary International President. The Royce Abbey Foundation aims to educate people from the Pacific Islands in Food production and Agricultural Science by inviting them to Australia and engaging them in agricultural education and experiences.

*continued on page 8*

**WOODEND  
NURSERY**

"LOCAL KNOWLEDGE FOR LOCAL CONDITIONS"

**36 URQUHART ST, WOODEND**

**5427 1866**  
Full range of plants, seedlings  
& gardening accessories  
open 7 days

Not wanting to rest on its laurels, Woodend Rotary members have recently held a successful fundraising lunch for its exercise track project and a Mothers day raffle raising money for ovarian cancer research.

The club meets at the Victoria hotel every Thursday night from 6.45pm to enjoy friendship and interesting guest speakers. An upcoming speaker is Julie Wilson-Annan from Woodend Neighborhood House on 31st of May.

For more information contact President Charles Bender on 0409439046 or visit our club website at [www.rotarywoodend.org.au](http://www.rotarywoodend.org.au).

Submitted by G. Hocking for Rotary Club of Woodend

## WANTED

### Marketing Sales Student/Graduate

Interested in part time  
Business Development work  
Based in Woodend

Contact Liam McFadden

0411 707 895

[www.oneworldresourcing.com](http://www.oneworldresourcing.com)



Nature's Garden now stocks the wonderful range of Zeally Bay organic sourdough breads. Breads are delivered fresh every Tuesday, Thursday and Saturday.

Call in and see our extensive 100% organic range at Shop 4A Collier St, Woodend (cnr Anslow St) or call 5427 4406

[www.naturesgarden.com.au](http://www.naturesgarden.com.au)

Naturally, better products



# Upcoming Business Events

## Home Based Business Morning Tea

Thursday 21 June 2012, 10am at Bay Tree Cafe, 119 Main Street, Romsey. Cost: FREE.

If you are a home based business and facing the challenges of working in isolation then this informal morning tea is an opportunity to meet with other like-minded business people in a friendly environment. Enjoy a FREE morning tea and listen to guest speakers with presentations on a range of topics relevant to small business.

## Understanding Financial Statements

Tuesday 26 June 2012, 7pm-9pm at Victoria Hotel, 67 High Street, Woodend. Cost: \$20.

Do you struggle to read financial statements? The key to financial success is to understand how to read and use financial statements to make sound business decisions.

Find out how a balance sheet will assess the financial health of your business and gain a greater understanding of your profits through your Profit and Loss statement. Armed with the right tools achieving financial success is closer than you think!

## Business Networking Evening

Tuesday 31 July 2012, 6.30pm-10pm at Zarbys Bar and Bistro, 84 High Street, Woodend. Cost: \$30.

Join us for the second Business Networking Evening of the year. A great opportunity for local businesses to network, expand client bases and access current business information from Council.

## Marketing Basics

Tuesday 14 August 2012, 7pm-9pm at Holgates, 79 High Street, Woodend. Cost: \$20.

Understand what marketing really is in this hands-on and results-orientated seminar for those with little marketing knowledge. Learn how to develop a marketing plan, how to separate yourself from the pack, how to identify your target market and gain tips on cost-effective marketing strategies to promote your business.

Bookings and further information:

Visit [www.mrsc.vic.gov.au](http://www.mrsc.vic.gov.au), phone 54219 616 or email [ecodevadmin@mrsc.vic.gov.au](mailto:ecodevadmin@mrsc.vic.gov.au)



## Woodend Wine Store Degustation wine dinner

The newly opened Woodend Wine Store held its first wine dinner on the 4th of May at the Bentinck.

The evening started with the gathering of 24 people, many of whom did not know each other. Glasses of Sabre Sparkling were handed around as people formed groups and made each other's acquaintance. Pre-dinner nibbles of smoked salmon on black crostini with coconut vinaigrette soon followed to whet the appetite.

Once seated, the first of the Pinots were served; Stefano Lubiano Estate from Tasmania and Ata Rangi 'Crimson' from New Zealand. These two wines were matched with a delicious Duck, Herb and Port Terrine.

The following two courses of Crisp Skin Pork Belly and Beef Cheek Braised in Red Wine were matched with wines from Bass Phillip Gippsland, Benjamin Leroux of Burgundy as well as two local wineries Domaine Epis and Bindi.

Invited winemakers Michael Dhillon (Bindi) and Alec Epis (Domaine Epis) both graciously spoke about the wines and how the Macedon Ranges has developed as a region for growing excellent Pinot Noir.

By the time the final course of Maffra Aged Cheddar with dessert wine from Bress was served, friendships had been formed and phone numbers exchanged.

Woodend Wine Store would like to thank all the staff from the Bentinck for all their hard work, particularly Operations Manager Thierry Bertalmio and Chef William McIlDowney.

Submitted by Caroline Bailey, Woodend Wine Store

## Attention dog owners!

While everyone loves the spectacular Woodend Winter Arts Festival opening night fireworks, Festival organisers alert all pet owners that local dogs in particular are not always fans!

Each year a few loved pets (usually dogs) have to be tracked down after they have become frightened by the cracks and bangs of the fireworks (and the sight of 'bursting' lights). It can be very distressing for everyone involved – not least of all the animals that become lost.

Please ensure your pets are secure during the fireworks – particularly homes in the vicinity of Buffalo Stadium. This may mean keeping them indoors for the duration of the fireworks (between 6.30pm and 7.30pm). Also ensure that your pets are identifiable and properly collared – so that if they do go missing, they can be returned promptly before or during the long weekend.

Submitted by A. Patterson for WWAF

# What's New?



Stay warm and dry in our waterproof navy pants and snuggly fleece lined jackets (1 to 5 year old sizes).

**ZAPPA-do** Baby and You!

3/87 High Street, Woodend • 5427 1270 • [www.zappado.com.au](http://www.zappado.com.au)

# woodend wine Store

**We stock over 300 boutique Australian wines, beers and spirits plus a range of Internationals.**

We have close ties with many regional winemakers and growers.

Our selection reflects the passion for quality from small independent wineries and craft breweries

Open every day  
Mon - Thursday & Saturday 10am - 7pm  
Friday 10am - 8pm  
Sunday 11pm - 6pm  
42e Anslow Street, Woodend. 03 5427 2228


**Woodend Wine Store**  
**A Wine Lovers Experience**

ADVERTISEMENT

# Donna Petrovich MP

State Member of Parliament for Northern Victoria Region  
Parliamentary Secretary for Sustainability and Environment

## Working for the Macedon Ranges Community



*Your Community Voice*

☎ 5782 2011  
84 Sydney Street, Kilmore  
✉ [donna.petrovich@parliament.vic.gov.au](mailto:donna.petrovich@parliament.vic.gov.au)

Authorised by D Petrovich, 84 Sydney Street, Kilmore.

# The Mount Players

## Celebrating 40 years

The Mount Players are celebrating their 40th Anniversary and what better way to do it than presenting Rodgers and Hammerstein's favorite *Oklahoma!* directed by the father and daughter team of Peter and Olivia Kelly. The story revolves around the romances of Curly McLain (Ben Prewer) & Laurey Williams (Sara Green), Will Parker (Chris Sliwczynski) & the loveable Ado Annie is played by (Kerry Turpie), Ali Hakim and Gertie Cummings are played by Leigh Johnson and Melanie Burlak-Sankey. Jarrod Catt adds much depth to the character of Jud Fry who is a very misunderstood soul and so in love with Laurey he will stop at nothing to get her. Addo Annie's father Andrew Carnes played by Nick Gibson could not have been cast better; Nick was born to play the role to which he adds so much character. The story is set against the rivalry of Oklahoma's farmers and cowboys and the territory's impending statehood in 1906.

There have been many major revivals since, including the 1998 West End production in which Hugh Jackman, playing Curly, first found overseas success. Curly's opening number, Oh, What a Beautiful Mornin', kicks off a succession of well-loved tunes including The Farmer and the Cowman, and the title song, which was adopted as the Oklahoma state anthem in 1953.

Music Director is Peter Weerts, has taught the cast well. Peter has also conducted the orchestra for "Oklahoma". Peter was Music Director for the company's outstanding 2010 production of Sondheim's "Sweeney Todd" as well as several earlier popular shows such as "Orpheus in the Underworld" and "Man of La Mancha". Oklahoma! has been choreographed by a brilliant young woman Melanie Burlak-Sankey with some choreographic licence to add to the entertainment.

The Mount Players invite you to come along to the Mountview Theatre, Smith Street, Macedon, for a great evening or afternoon's entertainment. The four-week season began last Friday 25th of May, and continues Friday and Saturday evenings at 8pm, Sundays at 2pm and some Thursdays until Saturday 16th June. Tickets are \$25 adult, \$22 concession, further discounts for group bookings of 10 or more. Phone 1300 463 224.



Nick Gibson (*Andrew Carnes*) & Leigh Johnson (*Ali Hakim*)

Submitted by Frances Kelly, Mount Players



## Registered Shiatsu & Massage Therapist

Call Andrea  
**0416 005 982**

Monday - 70 High Street, **Woodend**  
Fri & Sun - 50 Mollison Street, **Kyneton**

By Appointment Only

**For all your catering needs**

Weddings, parties, corporate or bereavements.  
Give us a call and see how we can help to make your special occasion outstanding.  
We will arrive at the start of the night, cook, serve and then clean up our mess.  
Leaving you more time to tend to your guests or enjoy your party.

**0433 210 975** [www.dlushfingerfoods.com.au](http://www.dlushfingerfoods.com.au)

Mention this ad & receive a 10% discount on any party booked before August 31, 2012

You have Questions We have Answers

**CHINKA (HEP) STEEL** - Your "One Stop" Legal Shop

**Expert Advice Available**

* Family Law—who gets what?	* Executor responsibilities?
* Been charged by the Police?	* Been left out of the Will?
* Conveyancing - avoid the traps!	* Buying/Selling a Business?
* Need a Parenting Agreement?	* Do you have a current Will?
* Need a Co-habitation Agreement?	* Are you a Victim of Crime?

**Ph: 03 5427 2477** [www.chinkasteel.com.au](http://www.chinkasteel.com.au)  
74 High St Woodend  
[chinka@chinkasteel.com.au](mailto:chinka@chinkasteel.com.au)

Visit our website for information on various areas of law, useful links, downloadable brochures, plus much more!

# CROWTHERS FURNITURE

Wardrobes • Laundries • Entertainment units  
Studies • Libraries • Kitchens

0458 440 455  
[crowthersfurniture@gmail.com](mailto:crowthersfurniture@gmail.com)

The fencin' fella

- colorbond
- tubular
- timber
- steel picket
- pool

**Mini Earthmoving Kanga Loaders**

**Attachments include:**  
rotary hoe, soil leveling bar, 4 in 1 bucket, trenchers, post hole diggers, tipper

**SHAUN BARRON**  
**MOB: 0407 232 900 or 5422 3488 AH**



**TOWN & COUNTRY**

**Woodend Produce Store**

31 Brooke St, Woodend

**03 5427 2753 ELGAS**

*Poultry, Stock & Horse Feeds,  
Hay, Grain, Chaff, Pet Food,  
Fencing, Pine Sleepers & Poles,  
Concrete, Electric Fencing,  
Tanks, Oils & Lubes  
Irrigation, Garden Tools,  
Potting Mix, Pea Straw, Fertilizer,  
Herbicides & Much More!  
Elgas LPG Deliveries  
**We fill BBQ Gas Bottles***

*Come in and see what we've got!*

*Open 7 days*

*Monday- Friday 8.30 - 5.30*

*Saturday 8.30 - 4.00*

*Sunday 9.30 - 2.00*

Advertisers can receive a 10% discount by booking and pre-paying for 11 editions



**WOODEND & DISTRICT  
PODIATRY**

**John F. Shapland**  
Resident Practitioner

Reg. Department Veteran's Affairs

**5427 2064**  
Business and After Hours

1895 Mt. Macedon Rd., Woodend

## Trees for Mum

*Woodend residents honour their mums on Mother's Day with an environmental heart-warming gift*

The inaugural Woodend Trees for Mum event took place on Mother's Day, Sunday, 13th of May with over 150 people planting 120 native trees and grasses at Five Mile Creek Reserve off Tennyson Street in Woodend. The event was a huge success and even the forecast rain held off until the last tree was planted.

"It was a wonderful morning out. What a great way to celebrate Mother's Day," said Liesl Frankenberg.

The Trees for Mum initiative was started by friends and colleagues, Deena Raphael and Lauren Adlam, in Sydney in 2002. Both had lost their mothers to cancer and this was their way of paying tribute to their special mums.

In the years since inception, interest has grown and Trees for Mum events have been run in many states across Australia with more than 20,000 people planting trees as tributes to mothers who have passed away or to celebrate those who are still alive.

Woodend and Mildura were the only two towns in Victoria to host events for 2012.



1) Liesl Frankenberg and her 18 month-old daughter Jessica plant together  
2) First Mother's day for a few Woodend Mums

"We gave so many people the opportunity to create a living legacy on Mother's Day and made the day less painful for many as they remembered their dear mothers," said Angela Van Dam, Event Coordinator.

*continued on page 12*



*"for all your water needs"*

**The Water Bloke Specialises in**

- Rainwater Tank Installations
- Tank To Toilet connections
- Grey Water Recycling

We're based in Woodend, so call us for a free consultation and Water Audit of your home.

Contact Craig on 0410 275 714  
thewaterbloke@gmail.com

**I love Mini Maestros because...**  
**"I like playing instruments & singing"**  
Alina 3-4 year old class

Children love playing percussion instruments & musical games with Mini Maestros. Best of all, they have fun while they learn!

**Share the love of music with your child in 2012  
Enrol Now!**

From 6 months to 5 years of age

Call Jo 0417 703 690  
Macedon Ranges, Sunbury



[www.minimaestros.com.au](http://www.minimaestros.com.au)

0402 228 286



**Pacifique Vue  
Vanuatu**

Luxury Accommodation  
[www.pacifiquevue.com](http://www.pacifiquevue.com)  
Ocean front + FREE rental car

"Thanks to the team at Woodend Trees for Mum. We had a special moment planting trees for two very special mums (and now grandmas!) who are no longer with us," said Sarah Adair.

Myron Lysenko commented on Facebook "A heart-warming event. Thanks for organising it."

This event was only made possible thanks to generous funding from the North Central Catchment Management Authority and the enthusiastic support of the Woodend Landcare crew.

Given the extremely positive feedback from the local community, the Landcare team are already planning for Trees for Mum 2013.

If you are interested in attending next year please email Angela Van Dam at [TreesForMumWoodend@gmail.com](mailto:TreesForMumWoodend@gmail.com) or join us on Facebook 'Trees for Mum Woodend'.

For further information about Woodend Landcare sign up for their blog at [www.woodendlandcare.wordpress.com/](http://www.woodendlandcare.wordpress.com/) or call Peter Yates on 54273 22.

Submitted by Angela Van Dam

## Probus Club Woodend

Our coach trip in April was to the Botanical Gardens at Cranbourne. The main feature at Cranbourne is the Australian Garden. These gardens celebrate the beauty and diversity of Australian Flora in a wonderful landscape setting.

Stage two of the Australian Garden is still under construction but is due for completion later this year. This will not only enlarge the garden but will provide wonderful new vistas to the gardens.

Following our inspection of the garden, we adjourned to the Boonerwurrung Café for lunch. Some of us climbed to The Trig Point Lookout for views to Mt. Macedon, Western Port Bay and the surrounding country side before it was time to board the coach for home.

On May 10th our next excursion will be to Bendigo. We go by train, then a bus tour around Bendigo and will visit the Science Centre, Golden Dragon Museum, and Confectionary Capers.

Woodend Probus Club meets on the first Thursday of the month at 10am at The Woodend Community Centre. For more details ring 5427 2483.

Submitted by R.Hamilton-Secretary

## Carlsruhe 175th Anniversary

*Carlsruhe was 175 years old on Friday the 25th of May*  
The Community held a celebration of the anniversary on the weekend of the 26th and 27th of May. We would still like anyone with any photos, stories, memorabilia, etc to please let us know about them and allow us to share them.

A website dedicated to Carlsruhe has been created. This site can be found at [www.carlsruhe.com.au](http://www.carlsruhe.com.au)

### Diary Dates

- Landcare Group meets Monday the 4th of June at 7.30pm
- Community Planning Group meets on Tuesday the 5th of June at 7.30pm

All community members are welcome to attend.

Submitted by Margaret Glen

Ask us about B&B, Weddings and Functions at our Grange VenuesCLEVELAND WINERY



*Dine amongst the vines*

**FRIDAY & SATURDAY DINNER:**  
Choose from our a la carte or enjoy a sumptuous 3 course dinner.

**SUNDAY BRUNCH**  
(from 8am - 1pm):  
Country style buffet breakfast including pancakes and freshly cooked eggs any style.

**SUNDAY LUNCH**  
(from 1pm - 3pm):  
A la carte and gourmet pizzas.

Bookings essential.  
Call: 5429 9000 today!

**GRANGE**  
CLEVELAND WINERY

55 Shannons Road, Lancefield | e: [cleveland@grangecc.com.au](mailto:cleveland@grangecc.com.au)

CODE: IMA GRACEVSECT1032012

# FIREWOOD

**FROM \$95.00**  
**FREE DELIVERY**  
**FOR ORDERS OF 4 METERS**  
**OR MORE**

**SAME DAY DELIVERY**  
**CALL OR TEXT YOUR**  
**ORDER TO**  
**0413 526 761**

## The Mother's Day Classic fun run

*-Here to stay!*

Luckily the wet weather held off as hundreds of people braved the cold for the inaugural Macedon Ranges Mother's Day Classic fun run and walk held at the Woodend Children's park on Mother's Day. There was a fabulous supportive atmosphere as participants took to the picturesque 3km or 6km run or walk to raise money for the National Breast Cancer Foundation's research programs.

It was great to see the residents of the Macedon Ranges and beyond embrace this important event, with registrations more than doubling the organisers expectations - over 500 participants registered coming from as far afield as Greensborough, Yarraville, Sunbury and Werribee. Local participant Jenn Spencer Stewart said: "What an amazing achievement and only the first one. I have a feeling it is going to get huge because it was so well organised and such a lovely environment to run in".

The support of the community was vital to the success

of the day and the organisers would like to thank all the participants, and community groups that came together to support this wonderful event, including :

*The Woodend Bowling Club, Woodend Rotary, Macedon Scouts, Woodend CFA, and Woodend Police. The organisers would also like to thank major local sponsors, Cobaw Community Health, Macedon Ranges Shire Council, Western Water, the Woodend Fruit Shop, the Dja Dja Wurrung Clans Aboriginal Corporation, Raine and Horne Woodend, Sign Obsession, Solid Group, and Bourkies Bakehouse, plus many other businesses for their generous support.*

The Mother's Day Classic is hoping to raise more than \$4.2 million nationwide, with the Macedon Ranges event now an important contributor to that total. We hope to see you running or walking at next year's Mother's Day Classic! Thank you everyone from the organising committee: Kris Nelson, Yael Morris, Paula Speed, Alison Still, Sara Graham, Robyn Patton and Anne-Louise Lindner.

Submitted by Kristina Nelson



**24 Seven Alarms Aust Pty Ltd**

- Alarms installed, Serviced and Monitored
- Data cabling and phone line installation
- Medical Alert Systems
- Access Control Systems PSBL: 732-083-90s
- Digital Video Surveillance CCTV packages: domestic and commercial

1800 247 111/ 03 5427 4411  
sales@24sevenalarms.com.au

### O'CALLAGHAN BROS FIREWOOD Supplies

- ▲ Split redgum firewood pick up or delivered
- ▲ Bagged kindling available
- ▲ Public weighbridge

**OPEN 7 DAYS**  
28 SAUER Rd New Gisborne  
5428 1955 0488 957 090



Specialising in:  
CAR PARK KERBS • ASPHALT EDGING  
GARDEN EDGING • VARIOUS PROFILES  
REPAIR WORK

**IAN**  
0409 443 036



## Top Hat Productions



- \* 8 mm / 16 mm Film to DVD
- \* VHS/Mini DV/ Hi 8 to DVD
- \* Filming/Editing Services
- \* Corporate & Special Events Productions

AVPA Multi-Award Winners  
Accredited Producers

**PH: 03 5422 3930**

## Give us your books & we'll give you back your life!

### Flexible local bookkeeping services tailored for small business

- ATO/BAS compliant
- Bank reconciliations
- GST & BAS requirements
- Payroll, PAYG & superannuation
- Accounts Payable/Receivable
- Profit and loss statements
- Debt management
- Cash flow management

**INTRODUCTORY OFFER**  
call now for your FREE business appraisal

**MYOB Reckon xero**



**Call John Chisholm at First Class Accounts**  
Macedon Ranges on 0431 599 642  
www.firstclassaccounts.com/macedon-ranges

# Eating Out, In & Around Woodend

## Winter at



"Where Lovers of Food Eat"

♥ Winter trading hours 10 am till late  
Wednesday, Thursday & Friday for breakfast, lunch & dinner  
8am till late Saturday for breakfast lunch & dinner  
8am till 3.30 pm Sunday

♥ Schatzi's has New Winter Warmers on the menu plus all your old favourites

♥ Try our new locally roasted Sacco Coffee with Oma's famous apple cake still only \$6 !

♥ Join us on facebook to keep updated with specials and events at Schatzi's where everything is made from the heart!

For Bookings:  
P 5427 4447

Frank & Rose Gorlitz

\* FAB FOOD  
\* FUNCTIONS & CATERING  
BY ARRANGEMENT  
Bookings Essential  
BYO wine only  
Light Snacks Mondays  
Free entry for  
Macedon Ranges residents

**Tel: 5427 0295**

Large range of Australian Gifts

**Hanging  
Rock  
Café &  
Country  
House**



the bentinck

OF WOODEND

**Friday 1 June, 6.00pm**

Friday night drinks—first Friday of every month.  
Relax and unwind in the bar by the open fire.

A la carte restaurant open for dinner  
Restaurant availability limited. Reservations required.

**Celebrate Christmas in July on Bastille Day!**

An elegant 3 course feast combined  
with French elegance on Saturday 14 July

For more details visit our website.

8 Carlisle Street Woodend p: (03) 5427 2944 w: bentinck.com.au

CONFERENCES

WEDDINGS

EVENTS

# Olive Jones of Macedon

Restaurant Bar

Catering

Great food

Beautiful setting

Live Music

Pizza & Pasta  
Wednesday  
Nights

40 Victoria Street Macedon

P 5426 3700 E brooke@olivejones.com.au



Award winning Bread,  
Pies & Cakes

Shop 1 & 2, 115 High St, Woodend  
Open daily from 7am

54272486

[www.bourkies.com.au](http://www.bourkies.com.au)

# Eating Out, In & Around Woodend

## The Village Larder

### *A part of Woodend*

The Village Larder feels like such an integral part of Woodend that it is hard to believe that it turned just two years old in March. It is a testament to the popularity of 'The Larder', as it has become known to its regulars, that they estimate that they have served up approximately 187,000 coffees in those two years.

Not content with serving up breakfast, lunch and cakes all made with love from scratch in the Larder kitchen, the hardworking team has also started to open for dinner every Saturday night offering a small, carefully prepared menu that changes regularly. The first few menus quite literally gave a taste of what is to come continuing the already well established Village Larder tradition of highlighting the beautiful produce of Victoria such as heirloom vegetables and beautiful herbs from Angelica Organic Farm in Glenlyon; chorizo and silverside from John Harbour Quality Butchers in Ballarat and ricotta and cultured butter from Myrtleford Butter Company as well as proudly offering produce from the gardens of The Larder's regular customers such as chestnuts from Thistledome in Tylden for the seriously decadent Monte Blanc dessert.

They have also been taking things in a new direction by baking their own Irish Soda Bread and offering seafood in the form of Brik Pastry wrapped Garfish with Zough, Cumin Yoghurt and the delicious Portarlington Mussels with Chorizo and Tomato Sugo, Fregola Sardi Pasta and Sourdough.

To enjoy The Village Larder's simple, beautiful dinners call 5427 3399.

Submitted by Ben Oost



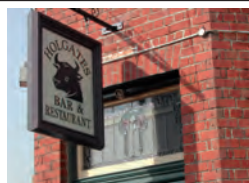
**Now Open for  
Dinner  
Every Saturday!**

Open 7 Days  
81 High St, Woodend  
Phone 5427 3399  
info@thevillagelarder.com.au  
www.thevillagelarder.com.au  
facebook: The Village Larder  
twitter: @villagelarder

## HOLGATE'S BAR & RESTAURANT

Microbrewery Hotel with cosy open fires, stained glass windows and friendly atmosphere. Award winning local beer. Delicious meals including house-made bread, pasta and desserts. Function room and stylish accommodation now available.

Open for Lunch Tues-Sun. Open for Dinner 7 Days  
79 High Street, Woodend



### *Private Degustation Dinners with Friends*

*Trying to organise that dinner with friends that you have been talking about for months?*

*Treat yourselves to a 6 course Degustation Dinner with matched Regional wines in our private dining room in front of the open fire, \$150 per person (includes wines)*

*Minimum of 8 guests - available June to September reservations essential call 5427 2273 to make your booking.*



GOLDIES LANE WOODEND 03 5427 2273  
reservations@campaspehouse.com.au www.campaspehouse.com.au



BAR & BISTRO  
THE VICTORIA HOTEL WOODEND

Woodend Winter Arts Festival  
Sat 9th & Sun 10th June

## Sweet Nothings Duo

Jazz Soul Cabaret  
9.30pm

Upstairs Lounge

Cover Charge Applies

Tel 03 5427 2721

Email: vicwoodend@bigpond.com

www.vicwoodend.com.au

67 High Street  
WOODEND



## BABY IT'S COLD OUTSIDE

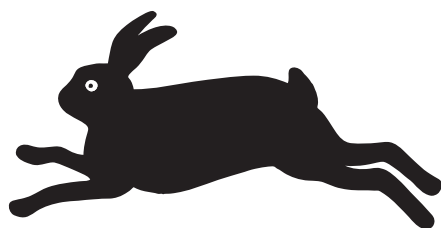
Can it be June? The weather says it's so. During this month we look forward to the Woodend Winter Arts Festival over the Queen's Birthday long weekend. Colenso will be OPEN all weekend long.

### JUNE LONG WEEKEND HOURS

FRIDAY	8.30 - 9PM
SATURDAY	8.30 - 9PM
SUNDAY	9.00 - 9PM
MONDAY	8.30 - 3PM

Colenso is open Friday nights. The fire is going, the wine is flowing, and an everchanging blackboard menu with lots of beautiful ingredients from local growers is featured.

Our usual hours are easy to remember. We are on deck for breakfast and lunch Monday to Saturday. We stay open Friday afternoon through to the evening. Saturday night is by reservation from 6.30pm.



### RUSSIA

Saturday, June 2  
Buckwheat blinis platter  
Beef Stroganoff  
Vareniki

### FRANCE

Saturday, June 9  
Celeriac puree with seared scallops and smoked bacon  
Duck confit with pomme anna and braised cabbage  
Pear tarte tatin

### AUSTRIA-HUNGARY

Sunday, June 10  
Duck liver mousse with Tokaji jelly, walnuts and muscatels  
Goulash with caraway dumplings  
Sacher Torte

### POLAND

Saturday, June 16  
Borscht  
Bigos hunters stew of duck, venison and kielbasa  
Makowski - bread pudding with poppyseeds and orange

### SWEDEN

Saturday, June 23  
Cured salmon with potato flatbreads, pickled onions and dill  
Slow cooked Venison shanks with Janssen's temptation  
Ostkaka - baked cheesecake with fruit compote and cream

### ITALY

Saturday, June 30  
Cotecchino with lentils and cavolo nero  
Pappardelle with rabbit sugo and pancetta  
Fennel salad  
Diplomatico

42D ANSLOW ST, WOODEND For reservations 54272007 [www.colenso.com.au](http://www.colenso.com.au)

**A perfect mix of history, science, practice and fun!**

James

**A plethora of useful information in one day. The refreshments and lunch were outstanding.**

Daniel

## Sourdough baking workshops

22 + 29 July

5 + 26 August

2 + 9 September

14, 21 + 28 October

11, 18 + 25 November

2 + 9 December

or mid-week by appointment

(minimum 4 people)

**T. 5424 1354**

**redbeardbakery.com.au**



## April Mission: Cambodia Volunteer Trip with CKF

April saw another amazing group of volunteers come over to Cambodia with us, a number of them being Woodend residents.

From day one we knew this group was going to be a lot of fun, and they more than lived up to our expectations.

They all worked super hard all day in the village - normally when our volunteers return home they are straight to bed, exhausted by the day - but not our April Volunteers, they wanted to stay up late chatting about their day and drinking some cold Angkor beers! Their late night partying however did not stop them from being bright eyed and bushy tailed the next morning at 6am for another day of work!

Our April volunteers worked so hard, they helped to construct a volleyball court in Soksán Village, they built a house for baby Watana and his family, they built fences for a number of families and worked hours away in the new Soksán Community Garden, building herb gardens for the village people to use.

Our April volunteers were also quick to jump at the opportunity of donating blood at one of the well-known children's hospitals, they even managed to talk a couple of our staff into doing it with them, including our 19 year old music and sport teacher Amnach!

Our April volunteers also attended the grand opening of our newest project the "ONE: beauty salon + training centre" (more info [www.facebook.com/onecambodia](http://www.facebook.com/onecambodia)) and were very happy to be able to relax and be pampered after two weeks of hard but satisfying work in Cambodia with the Cambodian Kids Foundation.

If you are interested in attending one of our Mission: Cambodia Volunteer Trips please get in contact with us, it is an experience like no other and an opportunity of a lifetime.

Due to the large number of families who have registered their interest we are offering a special family price, for families of 4 or more.

Contact [sam@cambodiankidsfoundation.com](mailto:sam@cambodiankidsfoundation.com) for more information on the Cambodian Kids Foundation or our Mission: Cambodia Volunteer Trips.

[www.cambodiankidsfoundation.org](http://www.cambodiankidsfoundation.org)

Submitted by Sam Cooper and the CKF team who want to see you over in Cambodia in 2012!



*Nathan from Woodend, with his new friends from Soksán Village*

# NURSERY ROAD

## GARDEN SUPPLIES

Sand | Soil | Mulch | Pots | Plants

Water features | Fire wood

Hire Equipment | Synthetic turf

Sleepers | Wine barrels | Pavers

42 Nursery Road Macedon 3440 Victoria | Email [hello@nrgsupplies.com.au](mailto:hello@nrgsupplies.com.au)  
Telephone 03 5426 2400 | Facsimile 03 5426 4972  
General open hours Monday-Friday 7:30-5pm, Saturday-Sunday 9-5pm  
Arrangements outside these hours can be made.

## Woodend Star - RSL Report

Well after a fairly hectic couple of months and with ANZAC Day behind us, we can finally slow down a little bit. What a great day it was on ANZAC Day this year, despite the poor weather, which failed to keep the crowds away from the March. In fact, some have told me that it was the biggest crowd they have seen for a long, long time! The ANZAC Badge Appeal was well patronised again this year and raised a total amount of \$5280, again, bigger than last year. Our thanks go out to all those who bought a badge or made a donation and to the local businesses for allowing us access to sell the tokens. All monies raised go to a worthy cause, assisting and providing welfare to our ageing veterans and their families.

I would also like to thank the volunteers who gave their valuable time, in the selling of the badges and for assisting the Women's Auxiliary with the Gunfire Breakfast and the morning tea after the Service. I don't think I have ever seen so many people in the Clubrooms at once, but I'm sure everyone got something to eat and drink. If it wasn't for our volunteers, we would not be able to make it such a successful day.

The cool weather is approaching, which means that the nights will be getting c c colder, but we are continuing with our Dinner Nights through the cooler months. We have a variety of performers booked for our Saturday Dinner Nights. Liz McKee, Neil Sheehan, Ricky Lee and we are working on a 'big event' for August. So it's all happening here, at the RSL. Why don't you come in and check it out!

Submitted by Barry Meldrum, President Woodend RSL

## Play and connect

Families of young children with an autism spectrum Disorder (ASD) now have a safe place to go and let their children play while they have a cuppa with other parents.

Play connect playgroup runs each Friday of school term from 10-12 noon at the Romsey Hub. Families from all over the Macedon ranges and from as far as Kilmore and Wallan attend.

If you are a parent of a young child diagnosed with an Autism Spectrum disorder or are in the process of exploring if that might be what is going on for your child, please come along to the Romsey Playgroup on a Friday morning. For more information please call Bernie on 5421 1680.

Submitted by Prue Southey

Business card advertisements (90mm x 55mm) are  
\$52 per month - book & pay 11 months  
and get 10% off.

jigsawstairs@optusnet.com.au  
0408 153 124  
**JIGSAW  
STAIRCASES**  
P.O Box 93 Woodend Vic 3442

## MACEDON RANGES SELF STORAGE

- \* 7 day access
- \* Individual units
- \* Affordable prices
- \* Insurance available
- \* **Now Fully Alarmed**

Store your:  
\* Cars  
\* Boats  
\* Business documents  
\* Furniture etc.

**Lot 3, Hoyle Court, Kyneton 5422 1898**  
(Off Beauchamp St) **5422 3488**



**FLYING START FITNESS**  
make it happen!

**We offer plenty of variety**

- Strength / Core / Cardio
- Spin Cycle Classes
- Bootcamp
- Boxing
- Kids & Teens Fitness
- Expert Running Coaching
- Corporate Fitness
- Personal Training
- Mobile Service available

5 week  
Group Fitness passes  
5 sessions \$75  
10 sessions \$135  
Unlimited Sessions \$200

<p>Monday 4.30 pm Kids Running 5.30 pm Adults Running 7.15 pm Spin/Circuit</p> <p>Wednesday 6.30 am Spin 9.30 am Spin/Circuit 4.30 pm Kids Running 7.15 pm Spin/Boxing</p> <p>Friday 9.30 am Spin/Circuit</p>	<p>Tuesday 6.00 am Bootcamp 9.30 am Spin/Boxing 4.45 pm Teens Circuit</p> <p>Thursday 6.00 am Bootcamp 9.30 am Running</p> <p>Saturday 7.00 am Bootcamp</p>
---	---

**Phone 0425 111 765**

**Clarity** *Integrated Technology Services*  
...the quality of being clear, pure, or transparent

- Business networking
- Home audio/video & networking
- Broadband/wireless
- Hardware sourcing & evaluation

*Making technology easy....  
No matter who, or where you are*



**Ian Templeton**  
PO Box 1020  
Woodend  
itempleton@ovi.com

0419 556 140

## Woodend Red Cross June Meeting

The next meeting of the Woodend Unit of Red Cross will be held on Thursday 7th June, 1.30pm at 39 High Street Woodend. New members will be made very welcome.

Submitted by M. Hocking



**FAIRHURST CONVEYANCING**  
and Secretarial Services

For all your  
**Property Transfers**  
Ring Sue Fairhurst on  
**5427 2382**  
27 Urquhart Street, Woodend  
MVCA & AIC



**LEADING HAND CARPENTRY**  
COMPLETE BUILDING SOLUTIONS

· quality workmanship · effective project management  
· new homes · extensions · renovations

  **REGISTERED**  
Building Practitioner

Call 0439 360 896 or email  
shannon@lhcarpentry.com.au

**MADDEN'S PORTABLE  
SAWMILLING  
SERVICES & SALES**

Turn your unwanted  
trees & logs into  
**VALUABLE TIMBER**



Call Craig on 0410 275 714

**UNEARTH**  
CREATIVE DANCE

Joyful expression through guided, improvised  
movement  
Creative Dance at Jubilee Hall MACEDON.  
**NEW TEENS CLASS 9-12 YEARS.**  
**TUESDAYS 4-5PM**  
**DYNAMIC, CIRCUS, HOOPS, EXPRESSIVE  
AMAZING.**

Call Della: **0422 652 688** or [unearthjoy@gmail.com](mailto:unearthjoy@gmail.com)  
[www.unearthcreative.com.au](http://www.unearthcreative.com.au)

## Red Cross Fundraiser

- *A Great Success*

On Thursday 29th March, the Woodend Red Cross Unit hosted a fundraising night at Macedon Views Function Centre. Over 120 people gathered to hear NBC Correspondent Sara James, speak about her experience visiting the resting site of the Titanic. Sara was the first network correspondent to ever have this opportunity. An appreciative crowd listened intently to Sara's remarkable recollections about this incredible experience; and watched footage recorded by Sara, from the NBC Dateline/Discovery Channel program called "Raising the Titanic". We would like to sincerely thank Sara, for her very generous support of the Red Cross. Sara had been unexpectedly taken ill on the afternoon of the event; but she amazed us all with her determination and courage in proceeding. Thank you Sara; your resilience was truly inspiring, and due to your professionalism I am sure the audience would never have been any the wiser.

We would also like to thank our many sponsors who generously donated prizes.

The evening raised over \$1800.00 for the Australian Red Cross. Thank you to all those who were involved in the organisation, and those who attended on the night.

Submitted by Marion Coulson

## Film Society likes a good swashbuckling!

Lots of chuckles were heard at the May meeting of the Macedon Ranges Film Society for the screening of "The Princess Bride". This cheery film contained all the elements of a well-told fairytale - fantasy, drama, suspense, humour, romance and a good dose of swashbuckling.

There is no swashbuckling per se in the film chosen for June but "Goodbye Lenin" promises, in quite a different way, to be just as interesting. This 1990 film, directed by Wolfgang Becker and starring Daniel Bruhl, Katrin Sass and Chulpan Khamatora, is the story of a young man who aims to protect his fragile mother from learning that her beloved nation East Germany, as she knew it, has disappeared.

This film will screen on Wednesday, 13th of June at 7.15 pm. The Macedon Ranges Film Society, meets on the second Wednesday of each month in the Woodend Community Hub.

For those who wish, there is discussion about the film after the screening and a chance for film buffs to meet each other and enjoy the refreshments provided by our members.

Email [mrfilmsociety@gmail.com](mailto:mrfilmsociety@gmail.com) or call Vicki on 5427 2323 or Christine on 5429 5452.

Submitted by Colin Fox

## Kyneton District Health Service Woodend Auxiliary

Once again, the people of Woodend have supported our work to raise funds for our local hospital. Our Mother's Day raffle drawn on May 11th, raised a magnificent \$950.00! It was worth sitting in the cold outside Coles to achieve such a splendid result.

All members should note the our next meeting will be on Thursday 14th of June at 20 Sullivans Rd, commencing 1.30pm. Once again, Thank you Woodend!

Submitted by Jo Clancy

# This page is proudly sponsored by the 19th HOLE SHOPPING CENTRE

cut out this calendar & stick on your fridge!

## Upcoming Events

### June

- Till 16 Mount Players – Oklahoma!
- 2 Woodend community framers market
- 6 Woodend Neighbourhood house – Woodend history final open session
- 7 Woodend Red Cross meeting
- 8 Woodend Winter Art Festival Fireworks
- 8 – 11 Woodend Winter Arts Festival
- 9 Folio Art Class Woodend Rail Walk unveiling
- 13 Macedon Ranges Film Society – Goodbye Lenin
- 17 SASS singing – St Ambrose

### July

- 15 SASS singing – St Andrews
- 21 Hawke Comedy



All community groups and events are invited to submit their dates for listing on the community events calendar

## COMMUNITY GROUPS CONTACT DETAILS

Alcoholics Anonymous, Friday night, Cobaw Community Centre, 0409 131 144  
 Australian Breastfeeding Association, Heather, 5427 2398  
 Cobaw Thursday Walking Group 5427 3340  
 Daylight Masonic Lodge, 5427 2480  
 1st Woodend Scout Group, 5427 1251, Roger  
 Friends of Macedon Ranges Library, Chris/Bill 5427 2469  
 Garden Club, 5422 6062 / 5427 3340  
 Kyneton Municipal Band, Doug, 0411 420 113  
 Lancefield-Macedon Ranges, Relay For Life, Melissa, 0438 831 427  
 Living Word Christian Church, 5429 6327  
 Historical Society, Courthouse, 5427 2523  
 Macedon Ranges & District Motor Club, 10 Webb Cres, New Gisborne 1st Wednesday each month 8pm  
 Macedon Ranges Animal Aid, Buffalo Sports Stadium, 5427 1752  
 Macedon Ranges Bridge Club, 5420 7595  
 Macedon Ranges Families of Children with Disabilities Support Group, 5427 3365  
 Macedon Ranges Residents Assc., 5427 1481 or 5427 2651  
 Macedon Ranges Communicators (ITC), 5427 2669  
 Macedon Ranges Photographic Society, Ron Mathews, 5427 3284  
 Parent Support 4 LD, - Kerrie 0414 432 158  
 Probus, 5427 2003  
 R.S.L., Anslow Street, 5427 3122  
 Red Cross, 5427 1260  
 Rotary Club of Woodend, meetings weekly at Vic Hotel Thursdays 6.45pm, Brendan 5422 6442  
 St. Mary's Guild, 11am, 4th Wednesday of month  
 St. Mary's Street Stall, 9-12 noon outside Woodend Newsagency (2nd Sat of the month)  
 Woodend Landcare Group, Jo 5427 1909 or Doug 5427 2666, 3rd Tues Meeting, 4th Sunday Working Bee  
 Woodend Art Group, Railway Station, 5427 1659  
 Woodend Hanging Rock Petanque Club, Hanging Rock Reserve, 5427 2477  
 Woodend Lions Club, Meetings 2nd/4th Wednesday each month, Barry McDonald, 5427 1272  
 Woodend Model Railway Club, Buffalo Stadium  
 Woodend Neighbourhood House, 47 Forest St, 5427 1845  
 Woodend Pony Club, 5427 2793  
 Woodend Senior Citizens Club, Comm. Centre  
 Woodend SES Training Nights Monday, Urquhart St  
 Woodend Tennis Club  
 Nadine, 0439 399 838  
 Woodend Winter Arts Festival Inc., Jacky. 0417 225 268



- Ian Marks Liquor**  
1300 627 575 ext 24 &34
- Blue Orange Concepts: homeware**  
5427 4500
- Woodend Pizza & Pasta**  
5427 3777
- Coles Supermarket**  
5427 2377
- Collier Office & Business Assist and Woodend Copy Centre**  
5427 3092
- Pets Haven**  
5427 3603
- Mitre-10 Woodend Hardware**  
5427 2314
- BP Woodend**  
5427 2248
- Target Country**  
5427 4366
- Macedon Ranges Travel Services**  
5427 4777
- Kosmac & Clemens: optometrists**  
5427 4577
- Woodend Cycles**  
5427 2662
- Salvation Army Family Store**  
5427 4421
- Loose Change Bargains**  
5427 4466
- Bodywise Underwear**  
1300 66 17 66
- Australia Post**  
5427 2600
- Feeling Framed**  
5427 4455
- The Spa Beauty Therapy Centre**  
5427 3322
- HIGH STREET SHOPS**
- Color Me Cooper**  
5427 1454
- Chelleon For Hair**  
5427 3246
- RT Edgar Real Estate**  
5427 1222
- Woodend Bakery Cafe**  
5427 3434



**Woodend CFA elects new Management Positions**

The Woodend Fire Brigade recently held its bi-annual election for senior operative positions and the results were as follows:

Captain: Mick Christie; 1st Lieutenant: Mike Dornau; 2nd Lieutenant: Steve Ritchie; 3rd Lieutenant: George Keyes; 4th Lieutenant: Simon Bailey; Communications Officer: Keith Mason; Secretary: Annette van Huffel; Treasurer: Steve Ritchie; Training Officer: George Keyes; Training Assistant: Paul Burgess; Fire Equipment Maintenance: Keith Beman; Member Support: Stewart McKinnon & Steve Rumble; Association Representatives: Ray Colban & Evan Colban; Social Secretary: Sue Hobbs; Group Delegates: Mick Christie & Mike Dornau.

**A sincere thank you to these generous Macedon Ranges businesses for their support for our annual dinner**

*Alyssa Kate, Benchmark Collective, Bites Deli, Blue Orange Concepts, Bodywise, Café Colenso, Chelleon for Hair, Chubb, Coles, Colliers Office & Business Assist, Colour Me Cooper, Dornau Group, Dow Chemical, Excessories, Feeling Framed Art Supplies, Firebird Motors, Glenn's Country Meats, Hanging Rock Winery, HD Art Gallery, Holgates Brenhouse, Ian Marks Liquor, Kerri's Bundle of Bears, Kosmac & Clemens, Macedon Ranges Travel,*

*Macedon Views, Maloa House, May 5 Gifts, Miranda's Antiques, Mitre 10, Nature's Garden, New Leaves Books, Sassy, Shatzki's, Sign Obsession, Southern Cross Office Supplies, Switch, Tempt Café & Treats, The Spa, The Village Larder, Top Shop, Victoria Hotel, Warner's Jewellers, Woodend Bakery Café, Woodend Book Store, Woodend Cycles, Woodend Nursery, Woodend Pharmacy, Woodend Wine Store, Zappa-do, Zarby's*

**The fire danger period is not over!**

The official Summer Fire Danger Period has ended, but that does not mean that the fire danger period is over. While we attend most of our bush, grass and scrub fires over the warmer months, the CFA attends more structural fires (such as houses and sheds) in the cooler months. This is the time when people start using their fires, heaters and electric blankets again.

One of our common winter calls is to a chimney fire, where the heat from the fire below has actually ignited ash and debris that is lodged in the chimney. It is therefore wise to regularly check, and even have your chimney or flue cleaned.

For further information contact Captain Mick Christie on 0419 870 601 or 1st Lieutenant Mike Dornau on 0409 093 935. Or call the Woodend CFA on 5427 2356, visit the station in Urquhart Street or our website: www.woodendcfa.org.

The Woodend CFA is a volunteer emergency service, committed to Creating a Safer Community.

Submitted by 1st Lieutenant Mike Dornau, Woodend CFA

**HOW THE 2012/2013 FEDERAL BUDGET MAY AFFECT YOU**

The Federal Government announced a number of proposed changes to the income tax regime in the 2012/2013 budget that may affect you.

The most significant changes are:

- Introduction of loss "carry back" for companies, offsetting profits in a prior year
- Tightening of employment termination payment tax offset
- Means testing for net medical expenses tax offset
- Doubling of tax (to 30%) on superannuation contributions for those with adjusted taxable income above \$300,000 p.a.
- Concessional superannuation contributions cap set to \$25,000 for all individuals for the 2013 and 2014 financial years
- Restrictions to Living Away From Home Allowances
- Schoolkids Bonus to replace Education Tax Offset

There have also been increases in Family Tax Benefit A. In order to receive these benefits you need to ensure your personal income tax return lodgements are up to date.

*Please note the 2012/13 budget initiatives have not been passed through parliament at the time of printing and are subject to change.*

To discuss further please contact Andrew Marshall or Janine Orpwood - 54273790 (85 High St, Woodend)

**Langley|McKimmie**

Chartered Accountants

www.langleymckimmie.com.au E: info@lmadvisors.com.au

## NEW CLINIC

### **WOODEND TRAVEL HEALTH**

At Brooke Street Medical Centre, winter is a busy time for us. One area of our practice that becomes busy at this time is the "Travel Clinic". Many of our patients seek warmer climates and take advantage of the Northern hemisphere summer for international travel.

*Woodend Travel Health* at Brooke Street is open and seeing patients on Thursdays 3-8pm. The clinic is supported by our GPs and run by our travel health nurse - Michelle Duley who, whilst spending most of 2011 living in Canada, took the opportunity to study the Foundation Course in Travel Medicine at the prestigious Royal College of Physicians and Surgeons of Glasgow. Michelle has an interest in assisting travelers by providing them with knowledge and vaccinations to help them stay well during their travels.



Michelle believes that whilst we have seen our patients for their travel health and vaccinations for many years, our new more structured clinic gives us an opportunity to provide a more comprehensive service. The aim of the clinic is to assist people to make wise decisions regarding their health whilst travelling. Michelle believes good health preparation will help our patients to get the most value from their holiday or business trip.

It would be great to see patients at least 8 weeks prior to travel and for them to come armed with itineraries and any records they have of past vaccination. However we understand that seeing us early is not always possible and even seeing a health professional very close to departure has been shown to provide health benefits for travelers. Well-travelled people, people travelling to stay with family and friends and cruise ship travelers should also consider help from the travel clinic, particularly if their destinations include Asia, Africa, South or Central America.

Brooke Street Medical Centre is an accredited Yellow Fever vaccinating centre meaning that we have been approved by the Australian Government to provide travelers with the World Health Organisation international certificate for Yellow Fever vaccine. This is a certificate required by many countries in Africa and South America before they will allow travelers entry.



We see both our own patients and new patients in our travel health Clinic and sometimes patients from other clinics who just need a Yellow Fever vaccine. Costs for patients include a standard gap fee for the consultation and costs of vaccines if needed.

To make an appointment, please let our reception staff know that you are booking for travel health. Also tell us whether you are coming with other family members so we can schedule a slightly longer appointment.



Staying well during your travels and having strategies to make decisions about potential health risks may save you money in the end.

### **New patients welcome**

Brooke Street Medical Centre welcomes new patients. Our services include General Practitioners (who provide a range of medical services) as well as nursing and allied health services. These include: health assessments, care planning, wound management, dietetics, exercise physiology, diabetes education, asthma education, smoking cessation, mental health nursing. Other private practitioners also provide services from our rooms. Please phone 5427 1002 for an appointment.

***Brooke St. Medical Centre – tel. (03) 5427 1002 (after hours: tel. 1300 55 75 12)***

# The Western Water River Detectives Program

*Carlsruhe Annexe Woodend Primary School.*

The Grade 4 students of Carlsruhe Annexe were excited at the prospect of visiting the river. What was in store? What did an actual River Detective do anyway? Students were quick to learn that the Western Water River Detectives program was designed to help school students learn about river health and water quality in their local waterways.

The trip to the river was an adventure in itself. Only a kilometre down the road, but the paddocks were alive. Alpacas stared curiously as 58 noisy students walked along. The sheep chewed their grass as if nothing was going on, but the dogs barked and the horses neighed as the eager students passed them by.

On arrival at the river the students listened carefully to the directions of Cass our resident River Detectives guru. Cass discussed the different rivers in our region. We learned about doing a habitat survey. It was interesting to know that the number of different types of plants showed how good the quality of the water was and trees and plants along the river reduce the amount of erosion. The rocks and logs provided habitats for native birds and other wildlife.

Water testing is a big part of being a River Detective. Each month we are going to measure the water and air temperature, rainfall, the turbidity (how cloudy the water is). We will also check out the salinity and electrical conductivity, phosphorous and PH levels. A special kit is provided to enable us to carry out these very important tests.

The Western Water River Detectives Program is a great way to get the kids involved in caring for our water and environment. It increases their understanding of local water quality issues engaging students in activities based on monitoring and caring for the rivers, creeks, rivers and wetlands in our area.

## Funding for School Maintenance: Add Your Voice

Woodend Primary School is achieving excellent academic outcomes across all areas of the curriculum. The students are active and engaged and parents continue to maintain a high level of school involvement. However, the school buildings and grounds are in need of urgent maintenance and the School Council is seeking commitment from the State Government to provide appropriate maintenance funding. If you know the school or are a parent of current or ex-student/s and would like to support the School Council's campaign, please go to [www.woodend.vic.edu.au](http://www.woodend.vic.edu.au) and follow the link in the What's Happening section of the Home Page.

Submitted by Joan Buchanan

This newsletter is supported by



## Norris needs a home



Norris is such a gentleman! He trots around making sure everything is good. He absolutely adores children, and loves to be with a family. Norris is not that good with small furry things like cats but gets on with most other dogs. He is fully house trained and walks well on a lead. If you can provide Norris with his forever home, please call Pets Haven on 5427 3603 or visit Shop 6/130 High Street Woodend.

Submitted by Fiona D'Silva for Pets Haven



**Magnetic Websites**

Martin Beaumont

PHONE 03 5427 4478  
MOBILE 0414 274 988  
HTTP [www.magneticwebsites.com.au](http://www.magneticwebsites.com.au)  
EMAIL [martin@magneticwebsites.com.au](mailto:martin@magneticwebsites.com.au)

Developing websites for the Macedon Ranges and beyond, ask how we can help you get online

## St Andrews Uniting Church, Woodend

All are welcome to join our church family in worship at our regular Sunday Services from 10.30am at St Andrews Uniting Church, Forest Street Woodend (next to the Police Station). Our weekly service is followed by tea and coffee and time to chat. Why not join us? We're a friendly bunch.

Submitted by Jenny Baldwin 0412 848701



**Residential Building Plans**

- Sketch Design & Planning
- Internal Living Planning
- Orientation & Sitings
- Site Plans & Site Analysis
- Town Planning Permits
- Building Permits

FREE DESIGN ANALYSIS & QUOTE

KARYN BIANCO 0425 723 183



**Quality Blinds at factory direct prices**

- Sunscreen/Blockout Blind
- Latest Styles/Fabrics/Colours
- Automated Blinds
- Roller/Roman Blinds/Venetians
- Exterior Awnings
- Professional Installation Team

Ring Now for a **Free In House Consultation/Quotation**

Mark 0437 759013 Simon 0458 338995

*Contemporary Blinds*  
Where Style is Affordable

## SCR Upholstery

SCR Upholstery is a new, locally owned business. We specialise in the refurbishment of modern and antique furniture, including recovering worn lounge and dining furniture, repairs to existing frames, loose sofa covers and cushion making.

Steve is a qualified upholsterer with over 10 years' experience in the trade, Gaining his upholstery qualification in New Zealand, Steve has worked in the industry in a range of positions through out the world.

Now based in Woodend, Steve is excited about starting his business and offering upholstery solutions to families and businesses across the Macedon Ranges.

To view photos of our work and what we do, head to [www.scrupholstery.hipages.com.au](http://www.scrupholstery.hipages.com.au) or call Steve on 0457 357 684 for more information and to organise a free quote.

Submitted by R. Good

## Furniture Upholstery

SCR Upholstery is a new, locally owned business.

We offer

- all aspects of upholstery to modern and antique furniture
- free quotes
- free pick up and delivery

Call Steve - 0457 357 684



ecosmar<sup>+</sup>  
Fire

Bio-ethanol fireplaces  
Warm your home not  
the environment



**Bradley's**  
Curtains + Blinds

t 5427 2361 fx 5427 1019  
72 High Street, Woodend VIC 3442

## Woodend Rail Walk

*The unveiling of the Folio Club Mural, Saturday 9th June at 11 am, at the Woodend Railway Station.*

Children from our Folio Club Art Classes have designed and painted a 7.6 meter mural that will be mounted on the fence at the Woodend Railway Station. All three groups in the class worked individually, assisting in the design of the elaborate work in a storybook style. The mural visually captures the Woodend Area aspect along with the major symbols that are to be seen within the locality.

The mural has been made possible with a grant from the 'Macedon Ranges Art Fund'.

The installation of the sign onto the fence was kindly sponsored by VLine.

Please come and celebrate their achievement with us and join us for some light refreshments and view our Winter Art Show afterwards. A warm fire will be waiting.

Submitted by Amanda Candusio. Woodend Art Group

Please ensure all news items, articles and community news columns are received by 15th of each month.

## Meta Massage

SPORTS/REMEDIAL MASSAGE, SHIATSU, REIKI

Raymond White

Telephone 0411 268 336

for an appointment

18 years experience • Chronic and acute conditions  
Sports injuries • Rehab work

## Lachlan Fleming

CONSTRUCTIONS PT

SERVICING THE MACEDON RANGES

0401 499 898

EXTENSIONS  
RENOVATIONS  
NEW HOMES



REGISTERED  
Building Practitioner



Master  
Builder

Massage  
Pilates  
Remedial  
Rehabilitation

with Pamela Kell

By appointment  
22 Goode Street  
Gisborne  
5428 1000  
0408 093 098

Assisting in the repair and maintenance  
of your body



## **SUCK IT UP PRINCESS (Part 2)**

**'...you live in the Macedon Ranges, it's winter, you're gunna be cold!'**

Our journey to a Zero Energy Bill Home started with those gruff words. Our \$2,500 heating bill was reduced by half in the first winter, and then we got serious!

How? We draught proofed our home. It cost a few thousand, but we 'paid off' our draught proofing investment, by saving energy in just two winters. And we were much warmer!

Many of the draught proofing products on the market were not effective. For doors, there was the 'door snake' and squashy, sticky stuff. So, we invested a few dollars and spent a couple of hours installing. Actually, husband (Maurice) did all the work and I supplied management overview, coffee and encouraging words!

The door snake was NEVER put back in place after the kids (and husband!) had been through. The last one out in the morning couldn't put the snake against the door anyway. And Nanna was constantly falling over it. The snake broke (I suspect the kids had something to do with that) and there was sand everywhere! The door snake left our home after just a few days.

And the sticky stuff around the door...what a pain! Nanna (with her arthritis) couldn't get the door closed at all. The kids simply decided to slam the door. The sticky stuff fell off the door after a few weeks and everyone was relieved.

Back to research. We found better solutions and developed some of our own. Our draught proofing is thorough, unique and it works!

If you would like to draught proof your home, give us a call to book a \$250 consultation. Once you know what to do, you can DIY (with products that actually work!), or our Macedon Ranges based installation crews can custom install for you.

You don't need to keep paying those extortionate energy bills! Future proof your home this winter.

Call us on 1300 326 627.  
Smart!



[www.ecoMaster.com.au](http://www.ecoMaster.com.au)

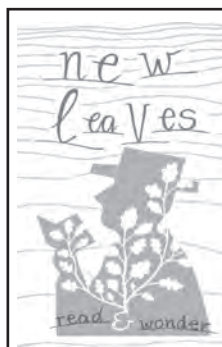
## **Woodend Toy Library**

*The Woodend Toy Library needs you!*

The Toy Library will be starting a new committee in July and are looking for new people to be involved. If you want to meet new people in the area and contribute to how the toy library is run, become a committee member. We are holding our Annual General Meeting on Wednesday 13th June at 10am at the Toy Library and all members are welcome to attend. The Toy Library committee will be elected at the Meeting. If you would like further information about being on the committee, a list of available positions is available at the Toy Library or please give the current president Deidre Chestney a call on 0425 701 652 or email [deidre@siren.com.au](mailto:deidre@siren.com.au)

The Toy Library is open on Thursday and Saturday mornings from 10am – 11am and is staffed on a voluntary basis by our members. Come along to the Toy Library, located next to the Cobaw Community Centre, and discover the wonderful collection of toys.

Submitted by Megan Spielvogel



**New Leaves invites you to help us celebrate the release of local author, Andrew Grimes' debut novel, The Richmond Conspiracy.**

Please join us for Andrew's book launch at New Leaves from 4pm on Sunday the 1<sup>st</sup> of July.

35c Anslow St (corner of Collier St), Woodend  
P 5427 3772 Daily, except Mondays

### **LEARN THE ANCIENT ART OF \*\*\* TAROT READING \*\*\***



Develop a life long skill  
Connect with the magic of archetypes  
Learn to identify human behaviour  
Clarify decision making  
Enjoy a deeper understanding of your personal spiritual journey

CLASSES 1pm – 4pm (x 6 classes) In Woodend  
Beginning Saturday July 7 – Saturday August 11, 2012  
CONTACT Lissa Tracey 0438 196232  
Dip. Of Holistic Healing, Tarot Reader and Reiki Practitioner  
Bookings Essential \$200 per person ABN 511 2237 0037

## *Naturally Divine*

For Hair, Body and Soul

Try any colour, face framing foils, stylish cut and blowdry/straighten all for just \$99.00 (long hair extra)

Ladies cuts from \$25.00

Come and see our award winning stylist Tracy, for excellent personalised service.

ph: 54226196 / 0411399493

## Making History at Woodend Neighbourhood House

History isn't just a record of major events or the lives and achievements of famous people, it's also about documenting the stories of individuals, their diversity, recollections, perceptions and experiences of life in the community in which they live or work.

Established in 1983, at a time when many people needed support in the wake of the catastrophic Ash Wednesday bushfires, Woodend Neighbourhood House itself represents an important piece of local history.

With funding from Macedon Ranges Shire Council Woodend Neighbourhood House is embarking on a project aimed at recording and celebrating Woodend's history through developing an historical timeline and memory book.

If you haven't already been to one of the open sessions and shared your little bit of Woodend history with us, we encourage you to come to the final open session on June 6th 1-3pm at Woodend Neighbourhood House (47 Forest Street) and share your story and connection to our beautiful village. You can write your story down and bring it along or tell us on the day. You can also email it to us (reception@woodendnh.org.au). We're looking for pictures to go with stories if you have them or any useful historical photos from the last 100 years.

If anyone is interested in assisting with the development of the timeline or memory book we'd love to hear from you. For more information contact Julie Wilson-Annan on 5427 1845.



**Alissa Kate**  
SALON & SPA

### JUNE SPECIALS

- **Acrylic nails – Now Available**
- **20% Off Waxing**  
Mondays only
- **\$15 Blow Wave, \$5 Eye Brow tint**  
**\$10 Eye lash tint** with Madeline, Wednesdays only
- **101 Make Up Lesson**  
with a professional Make Up Artist
- **All facials and peels, including microdermabrasion \$80**

**We look forward to treating you soon!**

5427 3822      3/115 HIGH STREET WOODEND

## Welcome to the Woodend Star Kids Club June Birthdays

1st	Rachel Mundell.....	Turns 10
1st	Joshua Mundell.....	Turns 11
5th	Mitchell M Johnson.....	Turns 10
9th	Genevieve Brand.....	Turns 13
14th	Dylan Scerri-Johnstone.....	Turns 8
26th	Ruby Spencer-Stewart.....	Turns 13
28th	Laura Crozier.....	Turns 11

## Happy Birthday Everyone!

JOIN THE WOODEND STAR KIDS CLUB  
 Fill in your details below and mail to P.O. Box 387 Woodend  
 Age limit is 13 years old. Must be a resident of the 3442 postcode

Full name: \_\_\_\_\_

Address: \_\_\_\_\_

Date of Birth: \_\_\_\_\_ Age: \_\_\_\_\_

Phone: \_\_\_\_\_

Parent/Guardian  
 Signature: \_\_\_\_\_

Sponsored by:



**Collier Office**  
and Business Assist

Shop 5, 130 High St, Woodend. P: 5427 3209 e: sales@collieroffice.com.au

**You can collect your birthday surprise by visiting Collier Office & Business Assist**



### ON TIME!!!

Tired of being late for your appointments?

**Sun-Ranges Hire Cars**

can look after all your travel needs, with Prompt & Personal door to door service for less than you think

Airport Transfers – Business & Corporate Travel – Weddings & Special Occasions – Sporting Events – Theatre Nights

**Phone 0468 347742**

# JOANNE DUNCAN MP

## MEMBER FOR MACEDON

ADVERTISEMENT

As your local Member of Parliament I am keen to listen to any concerns or ideas you may have.

Please don't hesitate to contact me for assistance on any State Government matter.

Warm regards,  
**Joanne Duncan**



Authorised by J. Duncan, Shop 14/9 Goode St, Gisborne

Shop 14/9 Goode St, Gisborne VIC 3437  
P: 5428 2138 F: 5428 2919  
E: joanne.duncan@parliament.vic.gov.au  
[www.joanneduncan.com.au](http://www.joanneduncan.com.au)



## Goldfields Library Corporation 'Touring Collection'

Woodend Library shares with all Goldfields branches a magnificent collection of oversized, hardcover and richly illustrated books for adults that are great for weekend and holiday reading.

These titles are part of our 'Touring Collection' of expensive and hard-to-find books that move through our libraries so readers can always find something different.

Come in and browse this great resource for books on diverse topics ranging from fashion, to interior design, gardening, cars, travel, wildlife, history, cooking, music and much more.

You can also search for and reserve items from this collection via our online catalogue ([www.ncgrl.vic.gov.au](http://www.ncgrl.vic.gov.au)). To see what we've got, go to 'Advanced Search' in the catalogue and highlight 'Touring Collection' in the drop-down search box for collection type.

You can also narrow your search here for more recent acquisitions in this collection by inputting a publication year or range of years at 'year'. New titles floating around our libraries include:

- Vicki Butler-Henderson's 100 sexiest cars / Vicki Butler-Henderson (2010)
- Fashion at Royal Ascot: three centuries of thoroughbred style / James Sherwood (2011)
- English Ruins / Jeremy Musson (2011)
- Dogfight: the greatest air duels of World War II / ed. Tony Holmes (2011)

Visit Woodend Library at the corner of High and Forest Streets, or call us on 5427 2074 for more information.

Submitted by L. Cockram for Woodend Library



**JUMPING CASTLES  
MINI GOLF  
BUBBLE MACHINE**

PHONE  
**0418 724 684**

[www.chloesjumpingcastles.com.au](http://www.chloesjumpingcastles.com.au)

**CASTLEMAINE—GISBORNE  
CLEANING SERVICE**  
CHRISTINE ADAMS, FRYERS ROAD, ELPHINSTONE 3448  
**Carpet Cleaning Specialists  
Duct Cleaning, Window Cleaning, etc.**  
For all your cleaning requirements  
- no job too big or too small -  
*obligation-free quotes*  
Tel: 5473 3307 Fax: 5473 3310  
**Mobile: 0419 006 591**



**bodywise**  
UNDERWEAR

[www.bodywise.com.au](http://www.bodywise.com.au)  
**1300 66 17 66**  
Shop 19, 130 High St, Woodend

**Wire-free bras, briefs & more... sizes 10 to 30**



B5529 B50 B5465

**• wire-free • everyday comfort • all ages • maternity • sports • wardrobe basics •**

**JULIANA SMITH**

BN (Mid), LLB, GDLP  
**BARRISTER & SOLICITOR**

Bendigo & Macedon Ranges  
Woodend Office (by appointment)

72 Queen Street Bendigo 3550 Victoria  
T: (03) 5444 1181  
E: [info@jlaw.com.au](mailto:info@jlaw.com.au)

# Heritage News

Our exhibition at the Woodend Railway Station has aroused considerable interest. It seems there are a lot of train buffs out there! Continuing the theme, this description of recruiting by train for the First World War is taken from Sylvia Boxshall's book, "They Went to War". Copies of Sylvia's book are still available from Collier Office & Business Assist or the Court House on Wednesdays.



*The Recruiting Train at Woodend, 1916*

"The recruiting train left Spencer Street station on the 24th April 1916 for a tour of the Goulburn Valley and the northern districts of Victoria. Prominent members of the Recruiting Committee and parliamentarians were on board,

hoping to encourage young men to join up. The first stop was Woodend where they were met by a detachment of Senior Cadets from the 65th Battalion and the Royal Park Military Band. The band had been in the district over the weekend taking part in other celebrations. An improvised platform had been erected on the footpath in front of the Mechanics Institute where the gentlemen could address the crowd. Most of the residents attended as all places of business had been closed during the meeting, which lasted for more than an hour.

Only five men volunteered for service in the AIF on that day. Woodend and district had already sent many of their men to the front, but the committee noted that there were several eligible men still in town."

Submitted by Janet Hawkins, Woodend & District Heritage Society

## KYNETON EQUIPMENT & PARTY HIRE

**FOR ALL YOUR HIRING NEEDS**  
8-12 BEAUCHAMP ST PHONE (03) 5422 2311  
KYNETON VIC 3444 FAX (03) 5422 2930

Email: [kynhire@bigpond.net.au](mailto:kynhire@bigpond.net.au)  
website: [www.kynetonhire.com.au](http://www.kynetonhire.com.au)

## Woodend Self Storage

(Vic) Pty Ltd

66 Units available  
Full security  
Trailer hire available  
7 day access  
Affordable prices  
Insurance available



For any enquiries please contact  
Leonie or Dennis Barker  
5427 4175

## feeling FRAMED

bringing art to life

Custom picture, artwork, tapestry  
and memorabilia framing,  
professionally and economically  
performed in-house

*A comprehensive range of Art supplies  
at very competitive prices*

- Pencil & paint by numbers sets for youngsters
- Artist's quality brush and paint sets for the more experienced
- Matt boards and mounts for artwork presentation
- Books & magazines for the art enthusiast, or those just wanting a good read

43 Anslow Street, Woodend – 5427 4455  
Next to the post boxes  
[feelingframed@bigpond.com](mailto:feelingframed@bigpond.com)

# EOFY SALE

20% OFF  
FILING PRODUCTS

With Tax time rapidly approaching, Collier's is getting into the spirit by taking **20% off** all filing products.

**Get your files, paperwork and office space in order**

Range includes:

- Suspension files
- Binders & Folders
- Archive boxes
- Dividers & Indices
- Document wallets & files

END OF FINANCIAL YEAR SALE

SALE

GREAT DEALS ON  
PRINTER INK AND  
TONER CARTRIDGES



BUY 01 | INK OR TONER  
SAVE 5%

BUY 02 | INK OR TONER  
SAVE 10%

BUY 03 | INK OR TONER  
SAVE 15%

**BUY MORE & SAVE**

## Buffalo Stadium

### Ladies Netball

Monday Morning, Starting soon, Get the girls together to make a team or register as an individual

For fun and fitness: Make Monday morning YOUR time. Please speak to our friendly team at the office, or call 5427 3411 to register your interest.

Netball Grand final coming up in July, Who will be the Premiers for the Tuesday night Ladies Netball competition? **Volleyball**

From 7.15pm Thursdays, Individuals and Teams can play, call the stadium for more information 54 273 411.

Submitted by Anita for Buffalo Stadium.

## Have You Got History???

If you live or have lived in Newham or have family history documents/photos of the area I would be very keen to see it. We seem to have plenty of items from the 19th and early 20th century and I have been collecting for 15 years, so there is a big gap.

If you wish to keep items for your family then perhaps you would let me photocopy them.

All items would be lodged with Woodend & District Heritage Society for the future.

I would be happy to come to your house to collect and return.

Submitted by Sally Stabback, 5422 6845.

## Newham & District Landcare Group

*Q: What do egg tossing and planting have in common?*

*A: Both bring residents in the Newham District together for a bit of fun.*

Communities for Nature grant success gives a planting boost to Hanging Rock Reserve.

The latest funding success of the Newham & District Landcare Group will give a boost to native vegetation at Hanging Rock Reserve. 1200 native plants will provide additional stability to the banks of the creek and depth to the vegetation. Weeds and exotic pasture grasses will be replaced by native under-storey and ground level plants.

Since 2004 the Landcare group has worked consistently to build a network of native vegetation between Macedon Regional Park and Cobaw State Forest, to 'link in' Hanging Rock Reserve and the Jim Jim and other isolated remnants. Over 50,000 indigenous native plants have gone into the ground in this area.

Successful grant applications [15 to date], distribution of volunteer-grown plants at cost, assistance with labour and tools for planting days and speaker events are just some of the activities undertaken by the group.

Support for Newham and Hesket Primary schools is a high priority, and this takes the form of funding for materials, speakers, excursions and other activities.

It's all fun (but not always an egg toss...) for the Newham & District Landcare group.

Submitted by Penny Roberts 0418 396 837



Shop 5, 130 High Street Woodend  
5427 3209 | [print@collieroffice.com.au](mailto:print@collieroffice.com.au)

# SPORTS NEWS

## Woodend Hasket Football Netball Club

### Hawk Comedy

The Woodend Hasket Hawks are hosting the most fun fundraiser for the year and we welcome everyone to join us.

Saturday 21st of July sees three of the funniest comedy acts in the country come to Woodend for a one night only laugh-fest in the first ever Hawke Comedy.

Lehmo (Before The Game & Gold 104.3) is the headline act, and he is bringing Danny McGinlay (The Comedy Channel) and the nutty identical Nelson Twins (Australia's Got Talent) with him to put on a cracker of a show.

The venue is the St. Ambrose Hall and the night kicks off at 7:30pm, Bring your own food and nibbles, drinks at bar prices, There will be a range of silent auctions, auctions and fundraising games on the night also. This is the perfect night to get together with a bunch of mates and laugh a chilly Woodend night away. Tickets are \$35 each.

Contact Shelley Hughes on 0407 528 044 to book a ticket today.

### WHFNC June fixture

- Saturday June 2nd – vs. Romsey – HOME
- Saturday June 16th – vs. Melton Centrals – AWAY
- Saturday June 23rd – vs. Kilmore – AWAY
- Saturday June 30th – vs. Wallan - HOME

Go Hawks!

Submitted by Jock Allan



## Runners Are Everywhere!

There has been so much happening at the Macedon Ranges Running Club (MRRC) that it's hard to keep up! Even the cool, crisp air has not deterred runners, volunteers or supporters from running, organising and celebrating.

Firstly, MRRC runners from the Intermediate Running Group (IRG) participated in the GREAT Macedon Ranges Challenge run on Sunday 29th of April alongside 90 other runners who wanted to conquer the climb up Gap Road from Riddells Creek to New Gisborne. It was a very successful event in terms of runners participating and volunteer marshals from Gisborne Rotary and MRRC who assisted on the morning to make the 15km course safe and enjoyable, with over \$24,000 being raised for various causes from the Challenge cycle and run.

Secondly, over 130 Start Running Group (SRG) runners from Gisborne, Woodend, Macedon and Riddells Creek warmed up and assembled at the starting line on Sunday 6th of May to achieve their final 10km non-stop running milestone. All SRG runners crossed the finish line to a mob of cheers, hugs and tears from family, friends and supporters. Congratulations to all SRG and IRG runners who committed to the training and achieved their running goals.

Lastly, a big thank you to the Macedon Ranges Councillor Mayor Henry McLaughlin for attending the MRRC Cocktail party and acknowledging the volunteer leaders that makes this club so successful and fun.

If you would like more information about the Macedon Ranges Running Club please email [macedonrangesrunningclub@gmail.com](mailto:macedonrangesrunningclub@gmail.com).

Submitted by Lisa Cole

## Tennis players

Woodend's top women's tennis team urgently needs one or two players to secure its presence in the midweek competition. Matches are played across the Macedon Ranges on Tuesdays from 10am. If interested please contact Leonie on 0408 137 998 or Laura, 0408 881 763.

Submitted by Nadine Hartnett

## Macedon Ranges Basketball

Mid week Ladies competition is looking for more players. Games are played on Wednesday mornings 10am and 10.50am. Any fitness level, all Welcome, Call Emma on 0412 558 788 before all the teams fill up. Occasional care is available at the centre while games are played. For occasional care bookings in Woodend call, 5422 033.

Submitted by Anita, Buffalo Sports Stadium

## TRADE & SERVICE DIRECTORY

### ANTENNAS

## ANTENNA EXPERTS



- Digital TV antenna's & extra outlets
- NextG/Optus 3G signal boosting  
LESS DROPOUTS, FASTER DATA SPEEDS
- Satellite installation
- Ph & data cabling

**TEKWORKA**  
We get things connected!

0411 155 617

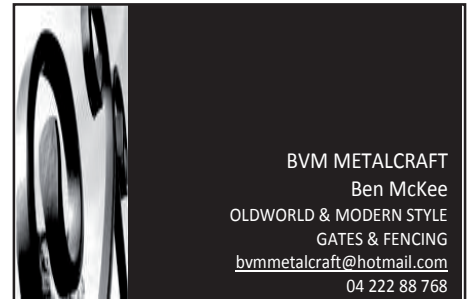
### FENCING & GATES

## Fencing & Gates

- colourbond
- timber
- picket steel & timber
- period style fencing
- all types of gates
- retaining walls

ph: 0419 005 185 5427 1192

### METAL GATES



BVM METALCRAFT  
Ben McKee  
OLDWORLD & MODERN STYLE  
GATES & FENCING  
[bvmmetalcraft@hotmail.com](mailto:bvmmetalcraft@hotmail.com)  
04 222 88 768

### PHYSIOTHERAPIST

## Kyneton Physiotherapy Robert Rouse

B. App. Sc. (Physio) Member A. Physio. Assoc.  
Registered for Comcare, TAC, W/Cover, DVA

30 years treating Woodend folk  
74 High St., (Corner New St.), Kyneton

5422 2290


### TAXI



**CROWN  
CABS**  
Your Local Taxi Service  
Bookings: 9310 5422

# TRADE & SERVICE DIRECTORY


## CLEANING



**Not enough hours in your day?  
Need help managing  
your home?**

**Stephen Farrell**  
Personal Services

Very reasonable rates  
Through out the Macedon Ranges  
Phone 0419 526 275



## DRESSMAKER

**Beryl's Tailoring**  
DRESSMAKING, ALTERATIONS,  
BRIDAL, EVENING & DAY WEAR,  
LADIES AND MEN'S REPAIRS

Beryl Bachelor  
QUALIFIED DRESSMAKER, NEWHAM  
BY APPOINTMENT ONLY  
MON TO FRI 9 - 5

5427 0568 0418 510 179  
berylb@vic.chariot.net.au



## CHIROPRACTOR

**Mark Brown**  
30 years experience

- Muscle realign & stretch techniques
- Gentle spine adjustments
- Elbows, wrists, kness, shoulders
- Headaches, migraines & athsma

Upstairs at Westpac Bank, 75 High St  
**Phone: 0407 526 403**

## GARDEN MAINTENANCE

**Hyland Brothers**  
Property Maintenance & Services

- Mowing (includes ride-on)
- Edging, Pruning & Trimming
- Clean-up & Rubbish Removal
- Handyman Work/Odd Jobs
- Weeding & Mulching
- Servicing Macedon Ranges

*Need a quote? "Ask the Hyland Brothers"*  
Col 0428 271 935 - Tex 0422 138 368  
or 5427 1044



## HOME INTERIORS

**DECORATE  
RENOVATE**  
Your Home or Room  
With Style,  
Design + Colour

**Present Well**  
HOME INTERIORS

Call Danielle 0400 664 231 [pwhi.com.au](http://pwhi.com.au)



## HOME MAINTENANCE

**Home maintenance & landscaping  
service including decking,  
pergolas, carpentry & painting.**

Stuart 0409 150 629  
AH 5427 2465

## PAINTING



**Aardvark Painting**  
ABN: 49 178 405 936

- ✓ All Painting Works
- ✓ Associated Repairs
- ✓ Discounts Available
- ✓ Call for a Free Quote

0488 094 186 / 0488 095 186  
Email: [staff@apainting.com.au](mailto:staff@apainting.com.au)  
Internet: <http://www.apainting.com.au>

## PAINTING

**GEE'S**  
Painting etc.

Call Steven  
0402 079 482



## PAINTING

**Painting & decorating  
Residential & commercial  
Rendering  
Prompt & professional**

**Rigoni Painting**  
Phone 0430 371 001



## PROPERTY & GARDEN MAINTENANCE

**ENJOY YOUR PRECIOUS WEEKENDS**

*Josh's Home Maintenance trading as*  
**TERRY'S GROUND CREW**

**Josh 0412 796 578**  
*\*\*Macedon Ranges vouchers accepted*

**ALL MOWING AND GARDEN MAINTENANCE**

## PSYCHOLOGIST

**Sam Luxemburg**  
Registered Psychologist

- Counselling in Woodend & Thornbury (Medicare rebate available)
- Counselling Training
- Myers-Briggs personality testing

**Phone: 0428 270 401**  
[www.luxcollege.com.au](http://www.luxcollege.com.au)

## STONELAYING & PAVING

**DUNN** Stonemason & Paver  
specialising in

- Retaining Walls
- Drystone Walls
- Stone Houses
- Paving
- Over 20 years' experience

**Cameron Dunn**  
Ph (03) 5427 4778 Mob 0429 162 589

## TREE SERVICES



**A&P Tree Services**

- tree pruning / removal • stump removal
- tree planting / transplanting • rope & harness climbing
- confined space removal • fully insured

Professional commercial & residential tree maintenance  
all work carried out by qualified arborist

Call Anthony **0417 059 969**

## TRENCHING

**ASHBY'S TRENCHING**

- Drainage & storm water
- Site levelling
- Cable and pipe laying
- Fencing

**Phone Mark 0427 973 360**

## WATER TANK CLEANING

**The Water Tank Cleaning Company**  
Central Victoria ABN: 65 156 529 387

- \* Tanks should be cleaned every 2-3 years
- \* Tanks can be full or low in water
- \* Tanks cleaned without emptying

Mark or Paul  
m: 0437 676 689  
e: [info@watertankcleaners.com.au](mailto:info@watertankcleaners.com.au)

# MACEDON RANGES 4X4

Don't get stuck in the mud!



15% off all recovery gear until June 30th

ARB TERRAIN TAMER GME DOBINSONS SUPENSION

OLD MAN EMU SAFARI SNORKELS WARN WINCHES

Did you know we service ALL makes and models of vehicles?

10% off your first service

**7 Ligar St Woodend 54 27 4468**

Finalist Macedon Ranges Business Excellence Awards 2011