

THE NEW WOODEND STAR



Circulation of 3340 throughout
Woodend postal district, Newham, Heskett, Ashbourne,
North Woodend, Hanging Rock, Carlsruhe, Cobaw.

AN INITIATIVE OF THE ROTARY CLUB OF WOODEND

May 2012

A Monthly Community Periodical

First Publication 1997

Volume Sixteen No 4



A Classic Mother's Day for the Macedon Ranges!

This year the residents of Macedon Ranges have the opportunity to join in the fun and participate in the inaugural Mother's Day Classic Macedon Ranges run/walk to raise much needed funds for breast cancer research. Since 1998 the Mother's Day Classic has grown into one of Australia's largest charity events and has become an integral part of Mother's Day for thousands of Australians.

The Mother's Day Classic Macedon Ranges will be held on Sunday May 13th, departing from the Woodend Children's Park, Nicholson Street, Woodend. Participants can choose from either a 3km or 6km walk or run. The welcome starts at 8:30 am and the event kicks off at 9:00 am.



Kristina Nelson, Paula Speed, Sara Graham and junior helpers are getting ready to show their support for breast cancer research on Mother's Day

Breast cancer is the most common cancer affecting women and touches the lives of not only women but also families, friends and colleagues all over the country. Currently in Australia 36 women are diagnosed with breast cancer every day. One in nine Australian women will be diagnosed with breast cancer by the age of 85. Since 1998 the Mother's Day Classic has raised \$10.8 million, with all proceeds donated to the National Breast Cancer Foundation. These funds have supported 18 researchers across Australia investigating all aspects of breast cancer. Research has led to improved detection and treatment of the disease resulting in a 27 per cent decrease in mortality since 1994.

Past participant Deanne Nobbs says, "The Mother's Day Classic is such an inspiring event. It is wonderful joining together with so many people to raise funds for such an

important issue. I will definitely be running again."

Gather your friends and family and join more than 120,000 people Australia wide who will participate to raise funds for this life saving cause. Tribute cards can also be made online and worn on the day.

For full details, and online registration before 12 noon 9th May, visit www.mothersdayclassic.com.au – select regional and then Macedon Ranges or register between 8:00-8:30 am on the day. Sponsorship opportunities are also available.

For further information about participation or sponsorship, please contact Kristina Nelson on 0448 355 535

Please note: dogs are not permitted at this event.

Submitted by K Nelson

Long weekend of migration, dreams of Utopia and a little crime



Some of Australia's leading authors and political and social commentators will descend on

Woodend for the Woodend Winter Arts Festival next month, bringing with them an extraordinary diversity of origins, ideas and views about what makes an ideal world.

Woodend's Vic Hotel, halls and schools will all be a part of the big weekend of the exploration of ideas through discussions, panels and workshops – and ticket sales are well up on previous years.



Phryne Fisher, a Kerry Greenwood character. Don't miss Kerry in "Does Crime Pay?" discussion panel

Author Kerry Greenwood, creator of Phryne Fisher (now on ABC TV), has written more than 50 novels and six non-fiction books. With a background as a lawyer from the western suburbs of Melbourne, Kerry has included local and regional landmarks in her writing and will discuss how she goes about her work in a session on Does Crime Pay.

In the first of the festival's ever-popular panel events for the weekend, Australia as a Refuge and Place of Renewal: The Migrant Story will draw on the experiences of panellists whose families came to Australia from very

continued on page 2

OFFICE SPACE TO RENT IN WOODEND

\$150 per week plus GST
Room plus bathroom facilities
Use of existing Reception Area
Suit Professional Person

Phone Sue Fairhurst BH 5427 2382

The New Woodend Star

An initiative of the Rotary Club of Woodend Inc.
The Bank, 75 High Street, Woodend, Vic. 3442
ABN 32 685 225 161 No. A0021518E

Layout & printing by Collier Office & Business Assist
EMAIL articles preferred: sales@collieroffice.com.au

Circulation: 3340 copies throughout Woodend and district

Disclaimer: Articles and comments published in this newspaper are the result of contributions from local groups and relevant news articles pertinent to the Woodend district. Neither the Rotary Club of Woodend Inc., The New Woodend Star nor the editorial team are liable for any mistakes, omissions, or misprints. It prints and makes no representation as to the truth or accuracy of any description, and accepts no liability for any loss suffered by any person who relies on any statement contained herein. The opinions expressed are not necessarily those of the editorial team. The committee reserves the right to omit, reject, cut, alter or otherwise re-work submitted articles to make them suitable.

Committee: Barry Napthine, Ivor Johnson, Claudia Green, Brendan Watters, Alexia Downie, Sue Macklin & Jane Watters

Closing date for inclusion of articles or advertising for each issue is the 15th of the month prior to publication Information for Advertisers

Prices for advertising 2012 All rates include GST & are priced per month.

Business card (55mm x 90mm)\$52 inc GST
Trade Page\$38 inc GST
Quarter page (90mm x 134mm)\$105 inc GST
Half page (134mm x 190mm).....\$198 inc GST
Full page (190mm x 277mm)\$338 inc GST
Insert (of your printed brochure).....\$246 inc GST

Advertisers: please note – it is in your interest to book and pay for a year in advance, as a 10% discount applies to any full year pre-paid booking. Any existing pre-paid ads will revert to the new rate on completion of the pre-paid period.

Advertising bookings to be made with Alexia Downie on 5427 3092 or sales@collieroffice.com.au. Accounts queries can be made to Sue on 5427 4089 or nws@johnsonwoodend.com.au Mail should be directed to: New Woodend Star, C/- The Bank, 75 High Street, Woodend 3442.

Woodend Star Publication Dates for 2012

June	May 28 th	September	September 3 rd
July	July 2 nd	October	October 1 st
August	July 30 th	November	October 29 th
		December	December 3 rd

Changes to advertisements, new advertisements or cancellations must all be made by email or in writing. All advertisements will be placed and charged for until notified otherwise.

SUBSCRIBE TO THE NEW WOODEND STAR

Do you live outside the New Woodend Star distribution area? Be sure to receive your copy every month by subscribing. A yearly subscription of 11 issues is just \$34.50. Post to New Woodend Star, C/- The Bank, 75 High Street, Woodend 3442.

Name: _____

Address: _____

Phone: _____ Enclosed: Cheque/Money Order for \$34.50

different backgrounds. Alice Pung (writer of Unpolished Gem and Her Father's Daughter, lawyer, teacher), Arnold Zable (award winning writer of Jewels and Ashes and Café Scheherazade, human rights advocate, storyteller and educator) and Andreas Litras (actor, teacher, director and writer acclaimed for his solo performance of Odyssey) will discuss past and present impacts of immigration and asylum seekers.

Utopia Down Under: Australia as a Social Laboratory is the second panel event featuring three heavyweights of political discourse: George Megalogenis (The Australian & ABC Insiders), Jeff Sparrow (Overland editor) and Lindsay Tanner (former Federal Minister) have all authored books on aspects of Australian culture and politics. They will explore the question 'What is the Australian Dream?', covering the mix of idealism and 19th century political and social innovation in the 'new Australia' to universal suffrage and the continued struggles for equality and independence.

Dreams will continue as a theme down at the (Victoria Hotel) pub – with author and storyteller Jan 'Yarn' Wositsky hosting a free event (Yarns at the Pub) for anyone who loves to talk – about utopian dreams, personal dreams, immigrant dreams or anything else; and Workshops for writers with dreams of completing a first work – or being published - will be held by Arnold Zable (Writing from Life) and Sheila Hollingworth (Writing a Convincing Book Proposal). Sheila is a freelance writer, published author and cartoonist.

Prices for events vary, bookings essential as these events sell out early.

For tickets or more information about the vast range of events including music and visual arts, schools program and free events, go to www.woodendwinterartsfestival.com.au or phone 0428 271 272. Regular updates are posted to the Festival's facebook page.

Submitted by A Patterson for WWAF




I love Mini Maestros because I like going there with Nan and Pa. We roll the balls, I wiggle my hips, I spin around and I love it so much".
Trista, 3-4 years
Phone Jo on 0417 703 690 or 5426 4719

Enrolments now open for 2012

Educate, energise and excite your child with the love of music through singing, dancing and playing instruments.

Weekday classes available in Woodend, Macedon, Kyneton, Gisborne and Sunbury.
Saturday classes in New Gisborne

www.minimaestros.com.au



WOODEND & DISTRICT PODIATRY

John F. Shapland

Resident Practitioner

Reg. Department Veteran's Affairs

5427 2064

Business and After Hours

1895 Mt. Macedon Rd., Woodend



"for all your water needs"

The Water Bloke Specialises in

- Rainwater Tank Installations
- Tank To Toilet connections
- Grey Water Recycling

We're based in Woodend, so call us for a free consultation and Water Audit of your home.

Contact Craig on 0410 275 714
thewaterbloke@gmail.com



**Call Andrea
0416 005 982**

Registered Shiatsu and
Massage Therapist

Now at Woodend Massage & Natural Therapies
70 High Street, Woodend VIC 3442

Monday Only

By Appointment 9:00am to 8:00pm

0402 228 286

**Pacifique Vue
Vanuatu**

Luxury Accommodation
www.pacifiquevue.com
Ocean front + FREE rental car

Woodend Rainfall Report 2011

Each month we add the rainfall details and the year to date total. Our rainfall report shows, **2005, 2006 2007 2008 2009 and 2010** comparisons. Please note that your own rainfall readings may not exactly match these.

	2007	2008	2009	2010	2011	2012	
January	83.5	17.1	0.08*	54*	227.5	31	Jan
February	27.4	22.1	2.5*	71.5*	115.0	133	Feb
March	35.7	25.4	42.5*	121*	35	84	Mar
April	20.2	20.4	51*	45	63.5		April
May	95.7	43.7	30.5*	39	73.5		May
June	105.1	88.7	66.5*	98.5	69		June
July	83.3	112.5	76.5*	87.5	82.5		July
August	34.8	52.2	107.5*	148.5	56		Aug
Sept	49.8	42.0*	88.5*	97	98.5		Sept
Oct	12.1	13.0*	46*	154.5	86		Oct
Nov	91.0	67.2	99*	193	82		Nov
Dec	101.2	96.0*	60*	93	120		Dec
YTD:	739.8	600.3	670.5	1202.5	1119.5	248	YTD

For the year of 2011 there was rainfall of

1119.5mm

1 inch = 25.4 mm therefore the total year 2011 is 44.07 inches

Tylden Fair and Tractor Pull

The annual Tylden Primary School Country Fair is on again Saturday 12th May, 10.00am to 3.00pm. Featuring the renowned Vintage Tractor Pull this exciting event has something for everyone: games and rides for the kids; classic car display and tractor pull for motoring enthusiasts; preserves, plants, and handicrafts for last minute Mother's Day presents; plus lots more.

This year Tylden Primary School celebrates its 150th year, and the fair promises to be better than ever. The Tractor Pull sees mighty machines, all over 60 years old, test their mettle against one another, with many prizes to be won. There will be stalls selling home-made jams and baked goods, as well as other delights including curries, Devonshire teas, and a sausage sizzle. For the children there are endless amusements including Probungee trampolines, giant slide, adventure jumping castles, petrol powered jeeps, a trackless train, and even camel rides. Unlimited rides can be had by the purchase of a wristband for \$25 in advance or \$30 on the day (\$15 for pre-schoolers).

For enquiries about the Fair or to pre-purchase wrist bands call Tylden Primary on 5424 8244, or contact Ross regarding the tractor pull 0428 176 996 or Craig regarding the classic cars 5424 8227.

Submitted by J. Goodman



Alistair Hanson and Fallon Cousins are keen for the Tylden fair and Tractor pull

**CROWTHERS
FURNITURE**

Wardrobes • Laundries • Entertainment units
Studies • Libraries • Kitchens

0458 440 455

crowthersfurniture@gmail.com

The fencin' fella

- colorbond
- tubular
- timber
- steel picket
- pool

**Mini
Earthmoving
Kanga Loaders**

Attachments include:
rotary hoe, soil leveling bar,
4 in 1 bucket, trenchers,
post hole diggers, tipper

SHAUN BARRON

MOB: 0407 232 900 or 5422 3488 AH

Woodend Landcare

Our volunteers are a familiar sight to most people around Woodend. Every Thursday "The Crew" can be seen grubbing out woody weeds, tidying up and sometimes having a bonfire.

We also hold monthly working bees at various sites along the creek, sometimes in partnership with other community groups such as Rotary and Scouts.

Despite this work and the help we get from the Shire Council, it is a struggle to keep up with the fast growing weeds such as blackberries, particularly in wet years. Even in previously treated areas, some weeds will always re-appear. Gorse seeds can lie dormant for up to 20 years, so it can be a long battle to stop them from growing and flowering again.

Luckily this year we received a significant grant from the Catchment Management Authority as part of a government flood recovery program. Much of this grant will be spent in paying contractors to eradicate weeds along the northern banks of the creek between High Street and Romsey Road. These contractors will also be removing some old willows near Tennyson Street.

Later in the year, we will be planting about 800 more indigenous plants in place of these weeds, so we will be looking for help from the community during the planting days in October.

Keep your eye on the Coles window or our blog at "woodendlandcare.wordpress.com" for details.

Submitted by Peter Yates

NURSERY ROAD

GARDEN SUPPLIES

Sand | Soil | Mulch | Pots | Plants

Water features | Fire wood

Hire Equipment | Synthetic turf

Sleepers | Wine barrels | Pavers

42 Nursery Road Macedon 3440 Victoria | Email hello@nrgsupplies.com.au

Telephone 03 5426 2400 | Facsimile 03 5426 4972

General open hours Monday-Friday 7:30-5pm, Saturday-Sunday 9-5pm

Arrangements outside these hours can be made.



RIVERWOOD GROUP

Accountants, Advisors & Planners

Office Locations:

111 High Street, Woodend

Ph: 03 5427 8000

2/19 Bourke Street, Kilmore

Ph: 03 5782 1273

email: admin@riverwoodgroup.com.au

website: www.riverwoodgroup.com.au

Riverwood Group can offer a *Total Financial Solutions* package for you and your family. Take a look at some of the services we provide:

Taxation

All your taxation requirements to suit individuals and small businesses.

Investments to Create & Protect your Wealth

Managed Funds, Indexed Funds, margin Lending and more

Planning for Retirement

Allocated Pensions, Centrelink Benefits and Payments

Stockbroking

Recommended lists, broking facility available, share updates

Superannuation & Rollovers

Advice, placements, Self-Managed Super Funds and Eligible Termination Payment Advice

Other Services

Home & Investment Loans, Business Loans and Leasing, Income Protection, Life Insurance, Professional Indemnity, Estate Planning and more.

jigsawstairs@optusnet.com.au

0408 153 124

JIGSAW STAIRCASES

P.O Box 93 Woodend Vic 3442

UNEARTH

CREATIVE DANCE

Joyful expression through guided, improvised movement

Creative Dance at Jubilee Hall MACEDON.

Children's classes 2-5years

5-8years

Teens

Adult classes

Call Della: **0422 652 688** or unearthjoy@gmail.com

www.unearthcreative.com.au

Friends of Hanging Rock Spotlight walk

The Friends of Hanging Rock will hold a spotlight walk on Saturday 26th. May – our first activity for the year. The Reserve is interesting as it contains a small pocket of natural bushland which is prolific in wildlife.

At a time when the majority of the Shire has been cleared of vegetation and replanting where it occurs, is invariably with exotics, (even within the H.R. Reserve!), it is wonderful to see an extant remnant population. Of course, the animals are wild and may or may not be amenable, nor may the weather, but if you are, then meet at the Café at 7:00 p.m. for this free public event.

Enquiries to Martin Joiner on 5427 0592.

Wheels of progress

Heavy machinery has been out and about grading and gravelling to create a large section for car parking adjoining the Buffalo Stadium football ground! Previously this was an unsightly, potholed area but will now enhance and integrate with the proposed Rotary Community Exercise Track. Work on this important community project will be commenced shortly, watch this space!



Submitted by B. Watters for Rotary Club of Woodend

House cleaning

Looking for permanent work

Weekdays from 9am – 5pm

\$20 per hour

Minimum 3 hours cleaning

Please note no equipment or cleaning products supplied

Call Kerri 0403 685 060

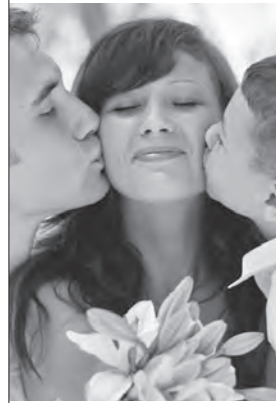


24 Seven Alarms Aust Pty Ltd

- Alarms installed, Serviced and Monitored
- Data cabling and phone line installation
- Medical Alert Systems
- Access Control Systems PSBL: 732-083-90s
- Digital Video Surveillance CCTV packages: domestic and commercial

1800 247 111/ 03 5427 4411
sales@24sevenalarms.com.au

CLEVELAND WINERY



*we love you
mum!*

Your mum is so incredibly special - so why not treat her to a delicious lunch at Cleveland Winery this Mother's Day?

Enjoy a splendid two course lunch, live music and sweeping views across the vines and ranges.

Plus, each mum will receive a complimentary glass of wine and beautiful flower to help celebrate the day.

Adults just \$55 per person.
Children (under 12) \$25 each
for two courses.

For bookings call:
5429 9000

GRANGE
CLEVELAND WINERY

55 Shannons Road, Lancefield | e: cleveland@grangecc.com.au

FIREWOOD

FROM \$95.00
FREE DELIVERY
FOR ORDERS OF 4 METERS
OR MORE

SAME DAY DELIVERY
CALL OR TEXT YOUR
ORDER TO
0413 526 761

ecosmar⁺
Fire

Bio-ethanol fireplaces
Warm your home not
the environment



Bradley's
Curtains+Blinds

t 5427 2361 fx 5427 1019
72 High Street, Woodend VIC 3442

Woodend Community Farmers' Market

Saturday 5th May, 9am to 1pm

That's right folks the market is on again this month with the ever expanding selection of great fresh produce, meats-beef, lamb, pork, free-range eggs, honey, preserves, herbs, backyard produce, plants, live poultry, stockfeed, cut flowers & more! We have between 30-40 producers at the market each month to choose from.

- Delicious local meats & vegetarian fare being served at the community barbeque.
- Home produce exchange from 9am; bring your excess produce to swap with others.
- Look out for our new market fliers for the fridge with all the market dates, so you can keep up to date with the local producers & where they will be.
- Work continues on the mobile demonstration kitchen for the Macedon Ranges Farmers' Markets stay tuned.

Rug up for the market & have a great morning shopping to the sounds of Sarah Wilkinson, the HRB Strongheart Band, local buskers, free face paint for the kids & friendly dogs welcome on a leash. Please bring your bags, baskets & trolleys.

Macedon Ranges Farmers' Markets also include Kyneton; Saturday 12th May, Riddells Creek; Saturday 19th May & Lancefield District; Saturday 26th May.

All Macedon Ranges farmers' markets are now proudly accredited with the Victorian Farmers' Markets Association, the peak body for farmers' markets in the state. This market is an initiative of the Macedon Ranges Sustainability Group. For more information please call Meggs on 0407 860 320.

Submitted by M. Hannes

woodend wine Store

We stock over 300 boutique Australian wines, beers and spirits plus a range of Internationals.

We have close ties with many regional winemakers and growers.

Our selection reflects the passion for quality from small independent wineries and craft breweries

Open every day

Mon - Thursday & Saturday 10am - 7pm

Friday 10am - 8pm

Sunday 11pm - 6pm

42e Anslow Street, Woodend. 03 5427 2228

Woodend Wine Store

A Wine Lovers Experience

WOODEND NURSERY

"LOCAL KNOWLEDGE FOR LOCAL CONDITIONS"

36 URQUHART ST, WOODEND

5427 1866

Full range of plants, seedlings
& gardening accessories
open 7 days

MACEDON RANGES SELF STORAGE

- * **7 day access**
- * **Individual units**
- * **Affordable prices**
- * **Insurance available**
- * **Now Fully Alarmed**

Store your:

- * Cars
- * Boats
- * Business documents
- * Furniture etc.

Lot 3, Hoyle Court, Kyneton
(Off Beauchamp St)

5422 1898
5422 3488

Grade 6 students from Woodend Primary School visit Canberra

On Monday the 19th of March the grade six's headed out on a long journey to Canberra. Our three nights at camp, were spent at a Y.M.C.A building, Bush Capital Lodge. Just after dinner on Monday we went to AMF bowling to play a game of ten pin bowls. Tuesday was spent travelling around well-known national buildings in Canberra including, The National Gallery of Australia, National Capital Exhibition, Australian Institute of Sport, Parliament House and The National Film and Sound Archives.

We participated in a range of sporting interactive activities at the A.I.S and got to watch Question Time 'LIVE' at Parliament House where Joe Hockey was kicked out for an hour. We also met Rob Mitchell the Member for our seat of McEwen. Later that night, after dinner we went back to the A.I.S. to have a swim in the Olympic pool.

Our last full day in Canberra was one to be remembered. We learned how our coins are made at The Royal Australian Mint, had a practice vote at The Electoral Education Centre and were given a fascinating tour of The High Court of Australia. Next, we were driven to The Australian War Memorial and learned more about the blood-thirsty battles the Australians fought. We even got to watch the practice parade for A.N.Z.A.C day. Our final destination was definitely one of the most exciting. Questacon (the science and technology centre) contained a range of different galleries each containing different activities and exhibits. The 6.7m free fall slide and the life-like 5.1 on the rictor scale earthquake, in the amazing

'Earthquake House', were easily two of the most exciting activities.

By the time we arrived home on Thursday, we were all exhausted and ready for bed. ZZZZZZZZZZZZ...

Written by School Captains Layla Barker and Theo McCoy.

Submitted by Joan Buchanan

Introducing SASS Sunday @ 6 singing

SASS is an ecumenical service of worship through song.

Held 3rd Sunday of the month @ 6pm, rotation between the churches in Woodend. St Marys 20th of May, St Ambrose 17th of June and St Andrews 15th of July.

Musicians, singers and listeners are all welcome. For further information contact Kevin Davis 5427 2942.

Submitted by Rosie Baker St Marys Woodend.

CENTRAL VICTORIAN TIMBER

- Sleepers •
- Treated Pine •
- Posts •
- Hardwood •
- Plaster •
- Doors •
- Redgum Firewood •

Specialists in house lots and extensions

Phone: 5427 1090
Email centralvictimber@bigpond.com

Monday to Friday 8am - 5pm Saturday 9am-12pm

**988 Blackforest Drive Woodend
(Old Sawmill Site)**

WARNER'S JEWELLERS

EST. 1912 ~ 4th Generation Jewellers

**Manufacturing Jewellers
Jewellery Repairs
Watch & Clock Repairs
Valuations & Rethreading**

97 High Street, Woodend 5427 1573

Joan P Jane 0403 046 048
PSYCHOLOGIST 5426 4165

- Stress • Post Traumatic Stress •
- Anxiety • Depression • Relationship • Family •
- Mental Skills Training • Sport • Self Esteem

The Bank **Bulk Billing**
75 High St. (Medicare - DVA - GP Referral)
Woodend 3442 Provider Number 2827013A
joanjane@bigpond.com

Clarity

Integrated Technology Services

...the quality of being clear, pure, or transparent

- Business networking
- Home audio/video & networking
- Broadband/wireless
- Hardware sourcing & evaluation

*Making technology easy....
No matter who, or where you are*

Ian Templeton
PO Box 1020
Woodend
itempleton@ovi.com

0419 556 140



SUCK IT UP PRINCESS!

'Suck it up princess... you live in the Macedon Ranges, it's winter, you're gunna be cold!'

And with those gruff words from the builder, the journey to reduce our \$2,500 heating bill took its first, defiant step.

We were determined that this was going to change. So from a home displaying 'icebox tendencies' with a \$2,500 heating bill, we now live in a 'cosy winter' and 'summer cool' home with a heating bill of \$400. There is no summer cooling bill – we don't use air conditioning and we don't need it!

So, how did we achieve a cosy home AND a 84% reduction in our heating bill?

We couldn't find anyone with sensible advice, there were so many claims and counter claims about the various products and what benefits they would produce. We didn't know what to do, how to do it or what products to use.

So, we decided to figure it out for ourselves. We researched extensively, tested endlessly, prototyped and evaluated. We built a heat chamber and hired a cool room (as you do!). Then we built a small 'test house' to fit inside the heat chamber.

We bought a sample of every insulation product on the market, insulated the test house and conducted temperature testing of each product in the heat chamber and then the cool room. We combined products, retested and then started to retrofit our home.

The results were quite staggering.

Our first retrofit activity reduced our heating bill by HALF!

What did we do??

Stay tuned for next month's edition.... or call us on 5428-8526 to find out how to reduce YOUR energy bill, forever. Smart!



www.ecoMaster.com.au

Macedon Ranges Bridge Club

Bridge is arguably the most popular card game in the world. Millions play it socially and competitively. The Macedon Ranges Bridge Club now has around 90 members.

Each year many bridge clubs right across Australia play in the "Bridge For Brain Research Challenge" organised by Neuroscience Research Australia in order to raise funds for the continuing research into finding cures for degenerative brain diseases like Alzheimer's.

This year the Bridge For Brain Research Challenge event is played in the first week of May, and all the participating clubs play the exact same hands so that players across the country can do their bit to assist others as well as checking their bridge prowess against players they would not normally meet.

The Macedon Ranges Bridge Club meets three times each week in Woodend; on Monday at 12.40 pm and Tuesday at 7.30 pm at the Community Centre Hall, Forest Street, and on Thursday at 12.40 pm at the Woodend Tennis Club.

If you are at all curious about bridge our next beginners course starts on the 8th of May. Come along, the first lesson is free, then continues each Tuesday night for a total of 8 weeks. The cost of the course is \$80 and includes notes and book for beginners. The classes are held at the Community Centre Hall, Woodend starting at 7.45 pm.

For more information please contact the club secretary Peter Wells on 5420 7595, or check out our website at www.mrbc.asn.au

Submitted by Peter Wells



**Vintage
Asian
GINKGO FURNISHINGS Furniture**

Exclusively Online

Beautiful, often one of a kind pieces of antique furniture to add style & character to your home. The collection is available exclusively online with free delivery on pieces of furniture over \$100 to buyers in the Macedon Ranges for a limited time.



www.ginkgofurnishings.com.au

Cambodian Kids Foundation opens 'One' in Phnom Penh

ONE: Beauty Salon + Training Centre is the newest project by local Woodend charity the Cambodian Kids Foundation (CKF).

Next week it will open its doors for the first time in the bustling city of Phnom Penh, Cambodia. ONE is open to the public as a commercial beauty salon that allows customers to be pampered and indulged in a peaceful environment.

The specialist beauty services ONE offers includes Massage, Manicures, Pedicures, Nail Art, Waxing, Eyelash tinting, Hair Styling, Hair colouring and more.

All of the staff employed are women who have either come from the slum communities in Phnom Penh or women from rural villages. Many of these women have never attended school.

They all have dreams of working in the beauty industry and for the past year Cambodian Kids Foundation has been assisting these women in attending training schools and skill workshops so they could build up their knowledge and practice.

As well as operating as a beauty salon, the centre has upstairs training rooms where our already trained women will take on students and apprentices and teach them the skills needed to start working in the salon also.

Our hopes are that one day these women will be able to leave ONE: beauty salon with the skills and knowledge to be able to open and manage their own businesses.

If you are ever in Phnom Penh, Cambodia please pay us a visit and take an opportunity to treat yourself knowing very well that you are helping to provide, a job, a living and a dream to these wonderful women who have worked incredibly hard to get to the position they are at today.

More info on ONE on our Facebook page www.facebook.com/onecambodia

The Cambodian Kids Foundation are also still looking for fun, hardworking & dedicated volunteers to join us on our 2012 Mission: Cambodia Volunteer Trips, please email sam@cambodiankidsfoundation.com for more information on our ONE: beauty salon and training centre or additional information on our 2012 volunteer trips.

Submitted by Sam Cooper

Naturally Divine
For Hair, Body and Soul

Try any colour, face framing foils, stylish cut and blowdry/straighten all for just \$99.00 (long hair extra)
Ladies cuts from \$25.00

Come and see our award winning stylist Tracy, for excellent personalised service.
ph: 54226196 / 0411399493

Truck & Bobcat Hire

Paving Turfing Rockeries
Paling & Colourbond Fencing
Watering Systems Retaining Walls
All of your garden and driveway construction catered for

CD & MC Muir Pty Ltd
craig@bobcatcraig.com
0417 331 085 5427 3095



What's New

Spoil mum this Mother's Day. Luxurious new robes ... and lots more to choose from. Gift Vouchers are also available.



ZAPPA-do *Baby and You!*
3/87 High Street, Woodend • 5427 1270 • www.zappado.com.au

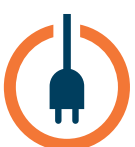
Massage
Pilates
Remedial
Rehabilitation
with Pamela Kell

By appointment
22 Goode Street
Gisborne
5428 1000
0408 093 098

Assisting in the repair and maintenance of your body

Paul Cox
0408 638 516

REC
13242



Kyneton Data & Electrical
Your Local Electricians

INSTALLATION, REWIRING, REPAIRS & MAINTENANCE OF ALL ELECTRICAL, TELEPHONE & COMPUTER EQUIPMENT

Meta Massage

SPORTS/REMEDIAL MASSAGE, SHIATSU, REIKI
Raymond White

Telephone 0411 268 336
for an appointment

18 years experience • Chronic and acute conditions
Sports injuries • Rehab work

The Spa is celebrating Women in May....

Create your own experience or choose from our packages:

- A Scentual Delight for \$165
- A Selections Package for \$129



The Spa

Beauty Therapy Centre

Gisborne
3/31 Brantome St Gisborne
03 5428 8800

Woodend
41 Anslow St Woodend 3442
03 5427 3322

www.thespa.com.au



Woodend Playgroup

New Committee

Woodend Playgroup's Committee for 2012 has now been formed and it seems we have a very productive year ahead.

Congratulations to the committee members on their new roles:

The playgroup committee meets on the third Monday of every month at the Playgroup Centre at 7:30pm. All members are welcome to attend these meetings, your input and interest is always appreciated. Alternatively, speak to your group leader if you have ideas or suggestions.

Woodend Playgroup offers a safe and friendly environment for children aged 0-5 to interact with other kids their age. Your child could make friends that they will know for years to come. Located at 45 Forest St. Woodend, we are fully equipped to cater to your child's imagination and energy levels. Craft activities, books, games, dress-ups and toys galore are just some of the things on offer. Alternatively your child might enjoy playing in the under-cover sand-pit, climbing the play equipment, riding a bike or playing in the cubby. Parents and carers are offered a warm place to meet other local parents and share your experiences of parenting over a cup of tea. With winter approaching, it's a fantastic excuse to get out of the house and socialise with the community while your kids are having fun. If you have just moved to the area or want to meet more people in your community, then playgroup is the perfect place to come. Our sessions run every day of the week and groups cater for children of similar age. We are currently taking enrolments for Term 2.

For enrolments and enquiries, please call Liesl on 0411 588 596.

The Spa – Celebrating Women

Pamper yourself, your Mum or someone special this month at The Spa. Exquisite treatments await you ... Choose from our Scentual Delight for \$165 or our Selections Package for \$129 or create your own experience.

Scentual Delight includes a 45 minute Aroma Massage and an Aromatherapy Facial.

Selections Package - choose 3 treatments from our Selections list and create your own 90 minutes of bliss:

- A Spa Mini Facial
- A Mini-mini Manicure
- A Relaxation Massage
- A Mini-mini Pedicure
- A Body Exfoliation
- A Hand & Feet Paraffin Treatment
- An Eye Treatment with a scalp & shoulder massage

A Spa Gift Voucher is the perfect way to pamper a loved one ... especially for Mother's Day.

The Spa has two convenient locations, at 41 Anslow Street, Woodend. Phone 5427 3322 and at 3/31 Brantome Street, Gisborne. Phone 5428 8800. www.thespa.com.au

Submitted by C. Tunbridge for The Spa

Lachlan Fleming

CONSTRUCTIONS

SERVICING THE MACEDON RANGES

0401 499 898

EXTENSIONS
RENOVATIONS
NEW HOMES

REGISTERED Building Practitioner

Master Builder

CASTLEMAINE—GISBORNE CLEANING SERVICE

CHRISTINE ADAMS, FRYERS ROAD, ELPHINSTONE 3448

Carpet Cleaning Specialists
Duct Cleaning, Window Cleaning, etc.

For all your cleaning requirements

- no job too big or too small -
obligation-free quotes

Tel: 5473 3307 Fax: 5473 3310

Mobile: 0419 006 591

JULIANA SMITH

BN (Mid), LLB, GDLP

BARRISTER & SOLICITOR

Bendigo & Macedon Ranges
Woodend Office (by appointment)

72 Queen Street Bendigo 3550 Victoria

T: (03) 5444 1181

E: info@jlaw.com.au

A Great 'Good Friday' Collection

Once again, the Woodend, Newham and Heskett-Kerrie CFA Brigades conducted the annual Good Friday collection for the Royal Children's Hospital Appeal. A very big thank you to all of the CFA members, family members and friends from each brigade, who volunteered to door knock and count, many giving up most of their day, and to the Ladies' Auxiliary for ensuring that all were well fed and watered. And a special thanks to everyone in the Woodend, Newham and Heskett-Kerrie areas who donated so generously, raising a record of just over \$11,640.

A special mention to the McKinnon family who had five members collecting and between them raised just over \$2,250. Unfortunately, we were not able to cover every home, and many people were away for the Easter break, so if you wish to still donate to the Royal Children's Hospital Appeal, donations are being accepted – please drop into the Woodend, Newham or Heskett-Kerrie CFA stations any Sunday morning to 11am if you wish to donate.

For more information: Mike Dornau 0409 093 935



Grantra
HOME IMPROVEMENTS
Specialising in Bathroom Renovations

PO Box 736, Woodend 3442
0418 175 877
www.grantrahomeimprovements.com.au

Master Builder
REGISTERED Building Practitioner



**JUMPING CASTLES
MINI GOLF
BUBBLE MACHINE**

**chloe's
jumping
castles**

PHONE
0418 724 684
www.chloesjumpingcastles.com.au

ON TIME!!!

Tired of being late for your appointments?

Sun-Ranges Hire Cars

can look after all your travel needs, with Prompt & Personal door to door service for less than you think

Airport Transfers – Business & Corporate Travel – Weddings & Special Occasions – Sporting Events – Theatre Nights

Phone 0468 347742

Bodywise Underwear

Bodywise Underwear is uniquely different from the average lingerie shop as our business specialises in comfort for women... bras, briefs and more and based on a very personalised, no obligation and professional fitting service.

Our Bodywise designed wire-free bras and comfy briefs suit bra sizes 10-22 and cups AB-EF and the Anita brand in sizes 10-30 and cups AB-HI are available from our Woodend showroom (next to Woodend Post Office) or alternatively our products can be purchased via the internet/ phone or mail order and shipped across Australia and around the world!

We are pleased to have launched our new website designed by Kerryanne of Central Victorian Web Design, Bendigo; keeping our business dollars in our local region. One of the standout features of our new website is the bra calculator based on the bust and midriff measurements of 'real women'.

Take advantage of our Mother's Day promotion and order online or purchase in-store products or a Gift Voucher to the value of \$100 or more, before midnight on Sunday 13/5/12 to be entered into our draw for an Anita bra of your choice.

Bodywise has a very loyal clientele who often travel great distances to incorporate a personalised fitting into their business or personal holiday plans. Recent purchases have been made by women visiting Woodend from the UK, Lao, Thailand and USA... WA, Qld and NZ... who we then encourage to spend more time in our beautiful region, visiting the exciting places on offer be it for coffee, lunch, a day, week or more!

Submitted by Bodywise Underwear



bodywise
UNDERWEAR

www.bodywise.com.au
1300 66 17 66
Shop 19, 130 High St, Woodend

Wire-free bras, briefs & more... sizes 10 to 30

B5529 B50 5432

• wire-free • everyday comfort • all ages • maternity • sports • wardrobe basics •

**KYNETON
EQUIPMENT & PARTY
HIRE**

FOR ALL YOUR HIRING NEEDS

8-12 BEAUCHAMP ST **PHONE (03) 5422 2311**
KYNETON VIC 3444 **FAX (03) 5422 2930**

Email: kynhire@bigpond.net.au
website: www.kynetonhire.com.au

Eating Out, In & Around Woodend



the bentinck
OF WOODEND

UPCOMING EVENTS AT THE BENTINCK!

Friday 4 May from 6.00pm

Due to Easter, May sees the return
of Friday night drinks
Relax and unwind in the bar
by the open fire
A la carte restaurant open for dinner
Restaurant availability limited. Reservations required.

Mother's Day, Sunday 13 May

Brunch 10.30am-12 Noon
\$45.00pp Two course set menu
with a glass of bubbly

Lunch 1.00pm-4.00pm
\$60.00pp Three course set menu
with a glass of bubbly

Availability is strictly limited. Reservations essential.

8 Carlisle Street, Woodend
p: (03) 5427 2944 w: bentinck.com.au

CONFERENCES WEDDINGS EVENTS



Award winning Bread,
Pies & Cakes

Shop 1 & 2, 115 High St, Woodend
Open daily from 7am

54272486

www.bourkies.com.au



BAR & BISTRO
THE VICTORIA HOTEL WOODEND

Good food &
local regional wines

KENO
&
AUSTAR FOOTBALL
coming soon

Tel 03 5427 2721
Email: vicwoodend@bigpond.com
www.vicwoodend@bigpond.com

67 High Street
WOODEND



**The Village
Larder**

Open 7 Days
8am - 4pm!

81 High St, Woodend
Phone 5427 3399
info@thevillagelarder.com.au
www.thevillagelarder.com.au

Eating Out, In & Around Woodend



Bruncheon- 10 till 3, Fridays, Saturdays & Sundays

The Grill is the new home of Bruncheon, with a unique & flexible menu for brunch or lunch.

You select the combinations that tempt you most from a range of out-of-the-ordinary choices on the menu. It's deliciously different.

Dinner- 6 till 9, Wednesdays to Sundays

Our ever-popular dinner menu continues to surprise and satisfy, and remains unchanged.

Our secrets lie in a South African tradition of grilling to mouth-watering perfection.

We offer:

Cosy & relaxed dining

A great venue for groups & functions

Kids' room/ Kids' menu

Vegetarian & Vegan choices

Bar & courtyard

Resistance is futile

Phone 5424 8119

43 Trentham Road Tylden

See our menu at

www.thegrillattylden.com.au

Olive Jones of Macedon

Restaurant

Bar

Catering

Gourmet Sausage night!!!

Every Wednesday from 6:00pm

Live Music

Great food

Beautiful setting

40 Victoria Street Macedon

P 5426 3700 E brooke@olivejones.com.au



Frank & Rose Gorlitz

Wednesday - Saturday
8am till late
breakfast, lunch & dinner
Sunday 8-3.30

For Bookings

Ph/Fax 5427 4447

Mobile 0488 423 537

"Where Lovers of Food Eat"

High Tea at Campaspe

Every Sunday afternoon, Campaspe House offers a traditional High Tea in the lounges of our historic 1920's Manor House. Ladies of all ages and distinguished gentlemen too, are enjoying special occasions such as anniversaries, birthdays, girl's weekends, hen's days or just enjoying a Sunday afternoon out. \$35 per person, reservations essential call 5427 2273 to make your booking.



GOLDIES LANE WOODEND 03 5427 2273

reservations@campaspehouse.com.au www.campaspehouse.com.au

* FAB FOOD
* FUNCTIONS & CATERING
BY ARRANGEMENT
Bookings Essential
BYO wine only
Light Snacks Mondays
Free entry for
Macedon Ranges residents

Tel: 5427 0295

Large range of Australian Gifts

Hanging Rock Café & Country House

HOLGATE'S BAR & RESTAURANT

Microbrewery Hotel with cosy open fires, stained glass windows and friendly atmosphere. Award winning local beer. Delicious meals including house-made bread, pasta and desserts. Function room and stylish accommodation now available.

Open for Lunch Tues-Sun. Open for Dinner 7 Days

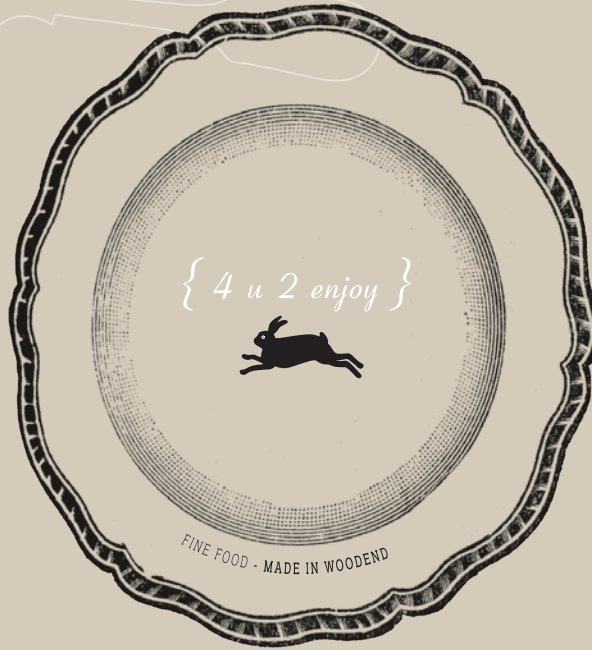
79 High Street, Woodend



COLENSO

D is for
DINE

www.colenso.com.au



MENUS FROM ITALY FOR THE MONTH OF MAY

ALTO ADIGE

Saturday, May 5

Zuppa al vino

Silverbeet and bread dumplings

Quail with polenta and radicchio

Apple strudel

TUSCANY

Saturday, May 19

Prosciutto e pecorino

Pasta e fagioli

Steak Florentine

Torta di Nonna

PIEDMONT

Saturday, May 12

Bagna Cauda

Tagliatelle with wild mushrooms

Braised pork with chestnuts and
parsnip purée

Gianduia

'RIVER CAFE' VEGETABLE FEAST

Saturday, May 26

Roast olives with fennel and citrus

Buffalo mozzarella

Oven dried tomatoes

Caponata

Wild mushroom risotto

Roast pears with chestnut honey

FOR RESERVATIONS 5427 2007

FOR ALL MENUS www.colenso.com.au

Woodend Self Storage

(Vic) Pty Ltd

66 Units available
Full security
Trailer hire available
7 day access
Affordable prices
Insurance available



For any enquiries please contact
Leonie or Dennis Barker
5427 4175

Feeling FRAMED

bringing art to life

Custom picture, artwork, tapestry
and memorabilia framing,
professionally and economically
performed in-house

*A comprehensive range of Art supplies
at very competitive prices*

- Pencil & paint by numbers sets for youngsters
- Artist's quality brush and paint sets for the more experienced
- Matt boards and mounts for artwork presentation
- Books & magazines for the art enthusiast, or those just wanting a good read

43 Anslow Street, Woodend – 5427 4455
Next to the post boxes
feelingframed@bigpond.com

Literary Dinner

Café Colenso – 23 May 2012

Comics as we know them are pretty much the type popularised early last century with American newspaper comic strips... but it was the invention of the printing press, and then the sound bubble that laid the groundwork for people like our Literary Dinner guest Bernard Caleo.



Bernard Caleo, renowned graphic and comic artist will discuss his work at a Literary Dinner on 23rd May at Colenso

In the first event of the official Festival program, the annual Literary Dinner, graphic and comic artist Bernard will talk about his work – which he describes as a job where he ‘writes, draws, publishes, teaches, preaches and performs comics.’

Find out more about Bernard at www.cardigancomics.com and see further events featuring him (including a practical masterclass for budding comics, a free storytelling session at the Woodend

Library and the secondary schools program) at www.woodendwinterartsfestival.org.au.

For local professionals and adults, this informal dinner is a set course menu with a sparkling wine (\$40). This is an extremely limited event (maximum 40 people) so bookings are absolutely essential through the festival website or by phoning 0428 271 272.

Submitted by A. Patterson for WWAFF



- Strength / Core / Cardio
- Spin Cycle Classes
- Bootcamp
- Boxing
- Kids & Teens Fitness
- Expert Running Coaching
- Corporate Fitness
- Personal Training
- Mobile Service available

Phone 0425 111 765

Magnetic Websites

Martin Beaumont

PHONE 03 5427 4478
MOBILE 0414 274 988
HTTP www.magneticwebsites.com.au
EMAIL martin@magneticwebsites.com.au

Developing websites for the Macedon Ranges and beyond, ask how we can help you get online

The MRFS likes a good fairy tale!

Following the screening of "Heavenly Creatures" starring Kate Winslet at the April meeting of the Macedon Ranges Film Society, a dark film which prompted animated conversation after the show, the May choice contains all the elements of a classic fairy tale – fun, fantasy, romance and adventure.

"The Princess Bride", a novel written in 1973 by William Goldman, was made into a film of the same name in 1978. The film opens with a grandfather reading from a much-loved book. The fantasy which ensues involves three main characters: Buttercup who is the princess bride, her childhood friend Westley who she treats with disdain, and Prince Humperdinck to whom she is unwillingly engaged. The plot thickens with a kidnapping, a masked man in black, a duel and a wrestling match and many more devious twists and turns before all is resolved.

This film will be shown on May 9th at the Woodend Community Centre, where the Macedon Ranges Film Society meets on the second Wednesday of every month at 7 p.m. Film notes are supplied and for those who wish, there is discussion about the film afterwards, accompanied by refreshments.

Email mrfilmsociety@gmail.com or call Vicki on 5427 2323 or Christine on 5429 5452.

All local groups, clubs and committees are invited to submit articles for publication

A Fond Farewell

The Committee of Management of Woodend Neighbourhood House wishes to inform the Woodend Community that the current House Coordinator Sarah Campbell is standing down from her position.

Sarah has been the Coordinator since 2005 and has seen the House expand and diversify in the years since. The House has evolved greatly under Sarah's management offering a far broader range of services.

Sarah has developed relationships with many local groups, and the House has supported and been involved with many projects cementing its role within the Woodend community. Her unwavering commitment, hard work and energy have allowed her to connect with a large part of our community and helped make the House into somewhere much more than just a place to do activities and classes. Her welcoming manner and supportive nature is evident to all who have come into contact with Woodend Neighbourhood House.

The Committee would like to thank Sarah for her hard work and devotion and wish her well in her future endeavours.

Submitted by Janet Pearce, Chairperson WNH

Thank you

St Mary's Anglican Church Guild would like to thank the ladies for attending our Knitting Day on 21 March 2012, overall we had 15 in attendance.

We started the Salvation Army's Knitting Blankets for the Homeless Project in 2005 and so far have sent 311 Blankets.

We are grateful for all your donations and it will be appreciated by others in need.

Submitted by Maria Arnold, Secretary, St Mary's Anglican Church Guild

ADVERTISEMENT

JOANNE DUNCAN MP

MEMBER FOR MACEDON

As your local Member of Parliament I am keen to listen to any concerns or ideas you may have.

Please don't hesitate to contact me for assistance on any State Government matter.

Warm regards,
Joanne Duncan



Authorised by J Duncan, Shop 14/9 Goode St, Gisborne

Shop 14/9 Goode St, Gisborne VIC 3437
P: 5428 2138 F: 5428 2919
E: joanne.duncan@parliament.vic.gov.au
www.joanneduncan.com.au

Quality Blinds at factory direct prices

- Sunscreen/Blockout Blind
- Latest Styles/Fabrics/Colours
- Automated Blinds
- Roller/Roman Blinds/Venetians
- Exterior Awnings
- Professional Installation Team

Ring Now for a **Free In House Consultation/Quotation**

Mark 0437 759013

Simon 0458 338995

*Contemporary Blinds
Where Style is Affordable*

WOODEND COMPUTER SERVICE

Sales - Service - Training & Help

THE BANK - OFFICE 3 - 75 HIGH ST WOODEND
JASON JOHNSON - 0400528129
pcs@live.com.au

1st Woodend Joey Scouts have a hopping good time

Recently six Joeys, two Joey Leaders and one Venturer from 1st Woodend Scout Group took part in an adventure-packed weekend of activities at Lardner Park in Warragul. Kangaree is a camp specifically designed for Joeys (6 and 7 year old Scouts). The 2013 Victorian Kangaree involved almost 500 Joeys who arrived at the camp site on Saturday 14th of April in time to take part in the themed activities of: Space, Out in the Bush, Frogs, Science and Pirates.



Dinner was followed by a campfire complete with a campfire sing along where the Joeys learned songs about bow-legged chickens, goats on rail tracks and doing the putcha dance! After all this fun they had a sound night's sleep in a large dormitory of 500 people. On Sunday the Joeys took part in activities based on the Jungle Book before heading home with smiles all round, many new friends and tales of adventure for their families.

The Joeys now can't wait to become Cubs and go to Cuboree for a whole five days of fun and adventure!

One of the highlights was the opportunity for our 1st Woodend Joey Scouts and Joey Scout Leaders (Rosella and Bilby) to meet Michael Baden-Powell (grandson of the creator of the Scouting movement, Sir Robert Baden-Powell).

For enrolment enquiries please contact Leisa Macartney on 0429 331 695.



kitchen cook table home
Blue Orange Concepts

**Found the Perfect
Mother's Day
present? We have!**

Shop 2 130 High Street, Woodend 3442 open 7 days
Telephone 03 5427 4500

Macedon Ranges Florist

*delivering flowers throughout the Macedon Ranges
& across the globe*

p 5427-2037
e mrflorist@live.com.au
All major cards accepted
Find us on facebook



BEAUTY IN TOUCH

Classical Beauty Therapist – Kerry Robinson

- Deep Cleansing Facials ▪
- Waxing ▪ Manicures ▪ Pedicures ▪
- Eyelash tinting ▪

Please call 0412 479 901 for an appointment
40A South Road, Woodend

You have Questions  We have Answers

CHINKA (HEP) STEEL - Your "One Stop" Legal Shop

Expert Advice Available


- * Family Law—who gets what?
- * Been charged by the Police?
- * Conveyancing - avoid the traps!
- * Need a Parenting Agreement?
- * Need a Co-habitation Agreement?
- * Executor responsibilities?
- * Been left out of the Will?
- * Buying/Selling a Business?
- * Do you have a current Will?
- * Are you a Victim of Crime?

Ph: 03 5427 2477

74 High St Woodend
chinka@chinkasteel.com.au


www.chinkasteel.com.au

Visit our website for information on various areas of law, useful links, downloadable brochures, plus much more!



Trees for Mum

see page 22 for more details



"A" Class Solar Systems

**SAVE \$500 - \$1000_{PA} ON
YOUR ELECTRICITY BILLS**

***LIMITED STOCK AT A GREAT PRICE* from
only \$3,500 for a Quality SOLAR ELECTRIC
BOOSTED HOT WATER SYSTEM**

- **Evacuated Tube Systems**
- **Frost Free**
- **Rebates Available**
- **Free Quote**

0407 511 836

Lic.No 31389

This page is proudly sponsored by the 19th HOLE SHOPPING CENTRE

cut out this calendar & stick on your fridge!



Upcoming Events

May

- 3 Gisborne Secondary College Information Evening
- 4 Dinner & Entertainment – Woodend RSL
- 5 Woodend Community Farmers' Market
- 5 Woodend whole town garage sale
- 7 Macedon Ranges Bridge Club - 12.40pm
- 8 Macedon Ranges Bridge Club - 7.30pm
- 9 Macedon Ranges Film Society – The Princess Bride
- 10 Macedon Ranges Bridge Club - 12.40pm
- 11 Celtic & Cobbers – Woodend RSL
- 12 Tylden PS Fair & Tractor Pull
- 13 Mother's Day
- 13 Mother's Day Classic Macedon Ranges
- 19 Dinner & Entertainment, Liz McKimm – Woodend RSL
- 20 SASS singing – St Marys
- 23 Literary Dinner - Cafe Colenso
- 25 Carlsruhe 170th anniversary
- 26 Friends of Hanging Rock Spotlight Walk

June

- 8 – 11 Woodend Winter Arts Festival
- 13 Macedon Ranges Film Society – Goodbye Lenin
- 17 SASS singing – St Ambrose

July

- 15 SASS singing – St Andrews

All community groups and events are invited to submit their dates for listing on the community events calendar

COMMUNITY GROUPS CONTACT DETAILS

Alcoholics Anonymous, Friday night, Cobaw Community Centre, 0409 131 144
 Australian Breastfeeding Association, Heather, 5427 2398
 Cobaw Thursday Walking Group 5427 3340
 Daylight Masonic Lodge, 5427 2480
 1st Woodend Scout Group, 5427 1251, Roger
 Friends of Macedon Ranges Library, Chris/Bill 5427 2469
 Garden Club, 5422 6062 / 5427 3340
 Kyneton Municipal Band, Doug, 0411 420 113
 Lancefield-Macedon Ranges, Relay For Life, Melissa, 0438 831 427
 Living Word Christian Church, 5429 6327
 Historical Society, Courthouse, 5427 2523
 Macedon Ranges & District Motor Club, 10 Webb Cres, New Gisborne 1st Wednesday each month 8pm
 Macedon Ranges Animal Aid, Buffalo Sports Stadium, 5427 1752
 Macedon Ranges Bridge Club, 5420 7595
 Macedon Ranges Families of Children with Disabilities Support Group, 5427 3365
 Macedon Ranges Residents Assoc., 5427 1481 or 5427 2651
 Macedon Ranges Communicators (ITC), 5427 2669
 Macedon Ranges Photographic Society, Ron Mathews, 5427 3284
 Parent Support 4 LD, - Kerrie 0414 432 158
 Probus, 5427 2003
 R.S.L., Anslow Street, 5427 3122
 Red Cross, 5427 1260
 Rotary Club of Woodend, meetings weekly at Vic Hotel Thursdays 6.45pm, Brendan 5422 6442
 St. Mary's Guild, 11am, 4th Wednesday of month
 St. Mary's Street Stall, 9-12 noon outside Woodend Newsagency (2nd Sat of the month)
 Woodend Landcare Group, Jo 5427 1909 or Doug 5427 0666, 3rd Tues Meeting, 4th Sunday Working Bee
 Woodend Art Group, Railway Station, 5427 1659
 Woodend Hanging Rock Petanque Club, Hanging Rock Reserve, 5427 2477
 Woodend Lions Club, Meetings 2nd/4th Wednesday each month, Barry McDonald, 5427 1272]
 Woodend Model Railway Club, Buffalo Stadium
 Woodend Neighbourhood House, 47 Forest St, 5427 1845
 Woodend Pony Club, 5427 2793
 Woodend Senior Citizens Club, Comm. Centre
 Woodend SES Training Nights Monday, Urquhart St
 Woodend Tennis Club
 Nadine, 0439 399 838
 Woodend Winter Arts Festival Inc., Jacky. 0417 225 268

Ian Marks Liquor
1300 627 575 ext 24 &34

Blue Orange Concepts: homeware
5427 4500

Woodend Pizza & Pasta
5427 3777

Coles Supermarket
5427 2377

**Collier Office & Business Assist
and Woodend Copy Centre**
5427 3092

Pets Haven
5427 3603

Mitre-10 Woodend Hardware
5427 2314

BP Woodend
5427 2248

Target Country
5427 4366

Macedon Ranges Travel Services
5427 4777

Kosmac & Clemens: optometrists
5427 4577

Woodend Cycles
5427 2662

Salvation Army Family Store
5427 4421

Loose Change Bargains
5427 4466

Bodywise Underwear
1300 66 17 66

Australia Post
5427 2600

Feeling Framed
5427 4455

The Spa Beauty Therapy Centre
5427 3322

HIGH STREET SHOPS

Color Me Cooper
5427 1454

Chelleon For Hair
5427 3246

RT Edgar Real Estate
5427 1222

Woodend Bakery Cafe
5427 3434



Take the CFA Home safety quiz

The official Summer Fire Danger Period has ended, but that does not mean the fire danger period is over. While we attend most of our bush, grass and scrub fires over the warmer months, the CFA attends more structural fires (such as houses and sheds) in the cooler months. This is the time when people start using their fires, heaters and electric blankets again.

Answer these 20 questions.

1. Is there a smoke alarm in your home? Do you test it every month?
2. Do you replace the battery annually or when the low battery alarm activates?
3. Is your house number easy to see so emergency vehicles can find you?
4. Have you placed the emergency phone number beside all your phones?
5. Has your household made and practised a home fire escape plan?
6. Have you planned a safe meeting place outside?
7. Do you have a fire extinguisher in your home?
8. Is your home protected by an electrical safety switch?
9. Are the keys kept in or near exits with deadlocks?
10. Do you always have electrical repairs, alterations or renovations done by a qualified electrician?
11. Do you avoid overloading power points?

12. Are flammable liquids stored away from heaters, hot water service pilot lights and other naked flames?
13. Do you avoid pouring flammable liquids in high risk areas – such as refuelling a lawn mower near a hot water service?
14. Is your electric blanket switched off before you get into bed?
15. Do you always use a fire screen with an open fire?
16. Are heating appliances kept safely away from laundry, curtains and furniture?
17. Are matches and cigarette lighters kept out of the way of children?
18. Do you clean the lint filter of your clothes dryer after each load?
19. Does everyone know the cold water first aid treatment for burns?
20. Is there clear access for CFA trucks to get close to your house – at least 4 metres wide x 4 metres high?

How did you score? Every YES scores a point!

Less than 10 – The potential for fire in your household is dangerously high. You need to be more than fire aware. 10 to 15 – Not bad. But there are still several things you can do to decrease the likelihood of a fire. 16 to 20 – Well done! You are giving yourself the best chance of protecting your life and property from house fire.

For further information contact Captain Mick Christie on 0419 870 601, 1st Lieutenant Mike Dornau on 0409 093 935, call the Woodend CFA on 5427 2356, or visit the station in Urquhart Street. Remember, we're always looking for new members – especially people able to respond during the day. The Woodend CFA is a volunteer emergency service, committed to Creating a Safer Community.

Submitted by 1st Lieutenant Mike Dornau, Woodend CFA



CAMPASPE HOUSE
A COUNTRY HOUSE HOTEL & RESTAURANT

Mother's Day Weekend

High Tea, Roses and Bush Beauties

Saturday 12th May 10.30am or 1.30pm

Presented by

Flowers in Vase by Arnie

Sunday Lunch

Sunday 13th May 12pm

Treat your mum to a special lunch, with a selection of canapés in the lounges followed by a 3 course lunch in our intimate restaurant

\$75 per person or \$45 per child
Book early to avoid disappointment!



Wedding Open Day

Sunday 3rd June, 2012

11.30am - 2pm

Wander through our beautiful Edna Walling gardens and historic manor house. Discuss your wedding plans with our friendly, professional staff and trusted local suppliers. View sample menus and table arrangements. Complimentary regional sparkling served on arrival. Please contact Samantha Fisher by email to enquire or to register your interest weddings@campaspehouse.com.au

Travel Clinic

Travel can pose challenges to health and safety. While most of us focus on arrangements for the fun aspects of travel, including health needs in your preparations can save a lot of sorrow in the long run.

The travel clinic is a new Brooke Street Medical Centre service aimed at ensuring your travel health needs and risks are properly identified and addressed before you leave Australia.

A thorough assessment of your itinerary and likely activities will help identify risks and the means to address these.

Immunisations are commonly needed and often these have to be given in a couple of doses, sometimes weeks before you leave. Yellow fever is one risk, for example, that is found in Africa and South & Central America. Brooke Street Medical Centre is accredited to give Yellow Fever vaccinations.

Our specialised clinic can advise you of the risks associated with your particular travel itinerary and the vaccinations needed.

We can also advise on other preventative measures like the significant risks of mosquito borne diseases such as dengue fever – a debilitating and sometimes lethal illness.

If you would like to have a travel health consultation please let our receptionist know that your appointment is for travel.

Gym – your feedback is wanted

In order to develop our gym – please let us know what you think and what your needs are.

The gym has now been running for a couple of months and as a new service is still in the developmental stage. We need your feedback – tell us what works for you and what doesn't.

Please pick up a survey at the Practice to give us your opinion. Your views will help in this early review and our plans for ongoing development.

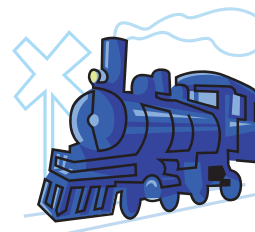
Flu Clinics for commuters

Hundreds of people travel to Melbourne on the train each day. Imagine if they all caught the flu!

We have flu clinics available in evenings and on Saturday mornings to meet the needs of commuters. We also have flu clinics available during the day for others. Please ring for an appointment.

These flu clinic consultations are for the flu vaccination only and will be bulk billed.

The cost of the vaccination is \$21, however the Government offers free vaccinations for those who are aged 65+, pregnant or indigenous aged 15+; and those people with chronic illnesses or conditions that predispose to severe influenza illness. Your doctor will assess your eligibility.



More diabetes care available

Our Diabetes Educator, Wendy Shepherdley, is now available on four days per week at Brooke Street Medical Centre.

Wendy is a Registered Nurse and Credentialed Diabetes Educator. Her skills in diabetes care are outstanding. Patients with diabetes should have regular, ongoing care to deal with the many health issues and complications associated with diabetes. Wendy works with GPs to ensure care is thorough and meets best practice diabetes care.

In addition to providing diabetes care, Wendy also assists patients with care planning, health assessments and coordinated care for Veterans.

It is best for patients with diabetes to see Wendy and have their appointment linked to their preferred GP. Ask our receptionists.

BIANCO BUILDING DESIGN & DRAFTING

Residential Building Plans

- Sketch Design & Planning
- Internal Living Planning
- Orientation & Sitings
- Site Plans & Site Analysis
- Town Planning Permits
- Building Permits

FREE DESIGN ANALYSIS
& QUOTE

KARYN BIANCO
0425 723 183



POLARIS

Financial Services Pty Ltd
www.polarisfp.com.au

Do you have one of the following Defined Benefit Super Funds and are nearing age 55:

ESSSuper (New & Revised)	CSS (Commonwealth Super Scheme)
PSS (Public Sector Super)	Uni Super
Health Super	Qantas Super
Telstra Super	State Super (NSW)

Members of these funds have specialist strategies they may be able to access from age 55 without having to stop working. These strategies could allow you to access a pensions and in some cases lump sum payments before you stop working.

Access to a regular pension from your super in addition to your salary could:

- Allow you to save more to super without reducing your take home pay!
- Allow you to reduce your work hours so you can work part-time until retirement!

Access to a lump sum payment from your super could:

- Help you pay off your home sooner!
- Provide funds that you could gift to your children to help them buy their first home!
- Complete those renovations you have been waiting to complete for so long!
- Ultimately, you could potentially bring your retirement closer!

Anneliese has extensive experience in advising on All types of Defined Benefit Funds. Don't miss out on understanding all the benefits you may be able to access.

To arrange an initial Free consultation , please contact

Anneliese Willmott

Office: 50 Urquhart St Woodend Call 5427 3330

Corporate authorised representative of Australian Financial Services Ltd AFSL 297239

ABN 50 116 900 362

Pastor's Parables

The progression of Motherhood.

Here are some of the ways having a second and third child is different from having the first.

Your Clothes:

- 1st baby: You begin wearing maternity clothes as soon as your doctor confirms your pregnancy.
- 2nd baby: You wear your regular clothes for as long as possible.
- 3rd baby: Your maternity clothes ARE your regular clothes.

Preparing for the Birth:

- 1st baby: You practice your breathing religiously.
- 2nd baby: You don't bother practicing because you remember that last time, breathing didn't do a thing.
- 3rd baby: You ask for an epidural in your 8th month.

Baby clothes:

- 1st baby: You pre-wash your newborn's clothes, colour-coordinate them, and fold them neatly in the baby's little bureau.
- 2nd baby: You check to make sure that the clothes are clean and discard only the ones with the darkest stains.
- 3rd baby: Boys can wear pink, can't they?

Worries:

- 1st baby: At the first sign of distress--a whimper, a frown-- you pick up the baby.
- 2nd baby: You pick the baby up when her wails threaten to wake your firstborn.
- 3rd baby: You teach your 3-year-old how to rewind the mechanical swing.

Dummy:

- 1st baby: If the Dummy falls on the floor, you put it away until you can go home and wash and boil it.
- 2nd baby: When the Dummy falls on the floor, you squirt it off with some juice from the baby's bottle.
- 3rd baby: You wipe it off on your shirt and pop it back in.

Nappies:

- 1st baby: You change your baby's Nappy every hour, whether they need it or not.
- 2nd baby: You change their Nappy every 2 to 3 hours, if needed.
- 3rd baby: You try to change their Nappy before others start to complain about the smell or you see it sagging to their knees.

The Bible says in Psalm 128:1-8 that if we follow God's Instructions of how to treat and rear our Children that it will be well with our families throughout our lives and into following generations.

What better gift could a Mother receive this Mother's Day, than peace and joy in her home?

Mums if you need help in the rearing of your children, we would be happy to point you to God's ways so that you too, will reap the blessings of godliness in your homes.

Please feel free to join us at either of our Sunday services, Mid week Life groups, mainly music program or contact us at our Church office on 5429 6327. We would be happy to be of assistance to you.

We are a Family church and welcome everyone.

Submitted by D. Eddy for Living World Christian Church

Woodend Carnival

The St. Ambrose Parish and School - Woodend Carnival was once again a fantastic day of fun, food and entertainment. The weather held off enabling all our great carnival rides to go ahead and the fairy floss, meringues and slushies got off to an early start for that early sugar rush! There were great bargains to be had at all our stalls and the entertainment on our Light & Sound purpose built stage was second to none. The St. Ambrose Parish and School, Woodend Carnival Committee would like to sincerely thank all the businesses and individuals who generously supported our event with donations and time. The majority of our sponsors are local businesses who are asked to support many community events and we appreciate their continued support. We would also like to thank the Macedon Ranges community who keep coming back to make the day a "must do" part of the regions' calendar.

Submitted by Fiona LeNepveu

Woodend Uniting Op Shop

Our volunteers have begun another busy year (Easter already). We have received large donations of clothes, pictures, china, books and we are very grateful for clean donations.

Two weeks ago the committee and volunteers discussed donating the shop's takings for the week to Victorian Flood Relief and we were delighted to be able to send a sizable cheque to the appeal. Our thanks to all buyers who helped us in this worthy cause.

We have welcomed two new volunteers earlier this year and are thankful for their help. To our many supporters thank you again.

Submitted by Jean Lucas



FAIRHURST CONVEYANCING
and Secretarial Services

For all your
Property Transfers
Ring Sue Fairhurst on
5427 2382
27 Urquhart Street, Woodend
MVCA & AIC

KMA FAMILY HISTORY SERVICES
....bringing the past into the present



Specialist Family History researching services
FREE initial consultation

Uncover your family story

0427 946 595
kmafamilhistoryservices@gmail.com

Welcome to the Woodend Star Kids Club May Birthdays

1st	Charlie Pace	Turns 6
6th	Jamie Staresina	Turns 12
7th	Cooper Ridington	Turns 5
9th	Tyrone Hinsley Hargreaves.....	Turns 9
9th	Jessica Louise Thorne	Turns 10
10th	Jett Sanders	Turns 7
17th	Cooper Ridington	Turns 5
26th	Jamieson Simpson.....	Turns 7

Happy Birthday Everyone!

JOIN THE WOODEND STAR KIDS CLUB
Fill in your details below and mail to P.O. Box 387 Woodend
Age limit is 13 years old. Must be a resident of the 3442 postcode

Full name: _____

Address: _____

Date of Birth: _____ Age: _____

Phone: _____

Parent/Guardian
Signature: _____

Sponsored by:



Collier Office
and Business Assist

Shop 5, 130 High St, Woodend. P: 5427 3209 e: sales@collieroffice.com.au

You can collect your birthday surprise by visiting Collier Office & Business Assist



Trees for Mum

Honour your mum this Mother's Day

Come along and plant a native tree in Woodend.

Trees for Mum will take place in Woodend on Sunday, 13th of May with all trees and planting equipment provided. Exact location will be advertised early May.

To register, so we have enough trees, please email TreesForMumWoodend@gmail.com or call Angela on 0409 373 010. For more information visit www.treesformum.com

Submitted by Angela Van Dam

Woodend Neighbourhood House

What is Woodend Neighbourhood House?

WNH is a pretty red brick house on Forest Street between the Woodend Hub and Woodend Playgroup. We provide space for our local community to partake in affordable educational, social and recreational activities. We also hire out room space and offer a number of services such as equipment hire, photocopying, Internet use, faxing etc. In addition we hold special community events designed to bring the community together. For Term 2 (16th April-29th June) these include the Historical Time Line Project and the Whole Town Garage sale (5th May).

WNH is a not for profit organisation relying on community participation in our programs, grants and a small amount of government funding to run. It is a friendly welcoming place where you can share skills, friendship and knowledge.

WANTED

Marketing Sales Student/Graduate

Interested in part time
Business Development work
Based in Woodend

Contact Liam McFadden

0411 707 895

www.oneworldresourcing.com



Nature's Garden now stocks the wonderful range of Zeally Bay organic sourdough breads. Breads are delivered fresh every Tuesday, Thursday and Saturday

Call in and see our extensive 100% organic range at Shop 4A Collier St, Woodend (cnr Anslow St) or call 5427 4406

www.naturesgarden.com.au

Naturally, better products



Who runs WNH?

A volunteer Committee of Management, a paid coordinator and volunteer staff (we're always in need of more volunteers!) run the House. Reception is staffed Monday to Friday 9am-3pm and the centre is also open weekends and evenings depending on the activities running.

What does WNH offer?

We offer a large number and variety of courses and activities in a supportive welcoming environment.

- Educational and Training Courses: to help you up skill, return to work or lead you to further study. Funding is available for some of these courses for eligible participants. Courses (Term 2) include:
Level 2 First Aid, Recreational Boat and Power Water Craft Training (to get your boat/PWC licence), Introduction to Retail, Book Keeping and Financial Admin, Skills for Getting that Job, MYOB for Small Business, Computers for Beginners, Computers for Business (many other computer classes are also offered), Introduction to Facebook, Twitter and Tumbler.
- Languages: We offer the following at beginner, intermediate and advanced levels: French, German, Spanish and Dutch.
- Health and Fitness: Zumba, Pilates, Tai Chi and Qi gong, Yoga, Seniors Exercise for Health, Cycling, Walking, Belly Dancing are offered.
- Art, Creativity: Painting with Acrylics, Creative Writing, Photography, Jewellery Making, Scrap Booking, Quilting and Stitching.
- Kids: We run School holiday Program most school holidays and during term time offer: Drama and Acting, Spanish, Zumba, Scrap booking, Music and Dance, Science club (for home schoolers) for children.

continued on page 24



LEADING HAND CARPENTRY
COMPLETE BUILDING SOLUTIONS

· quality workmanship · effective project management
· new homes · extensions · renovations

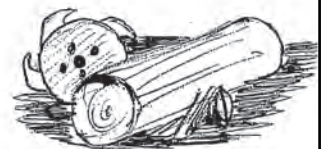


REGISTERED
Building Practitioner

Call 0439 360 896 or email
shannon@lhcarpentry.com.au

MADDEN'S PORTABLE SAWMILLING SERVICES & SALES

Turn your unwanted
trees & logs into
VALUABLE TIMBER



Call Craig on 0410 275 714

• Other: Beginners guide to keeping Livestock, Divine Essence – Chakra Dance, Vibration and Sound workshops, Tea and Angels.

How do I find out more about WNH?

All of the courses mentioned in this article are being offered in Term 2. If you'd like to find out more details about any of the courses/activities mentioned, or to find out more about WNH check out our website www.woodendnh.org.au or call us on 5427 1845.

Can't see anything you like? We'd love to hear your feedback and are always looking for new ideas, new tutors and new volunteers. Come in and connect with your community today.

Submitted by Julie Wilson-Annan

Kyneton District Health Service

Woodend Auxiliary

Our auxiliary held a stall at the April Market, and raised \$411 from the sale of home-made and hand-made preserves, baked goods, and crafts.

Thanks to the Woodend Lions Club for making this space available.

Our main effort for this month is our Mothers' Day raffle, with three excellent prizes. We will be selling tickets up to the Friday before "the day", so watch out for us at the end of the footpath outside Coles, near the High St corner.

We hope those of you who enter Coles via the door nearest the Ian Marks Liquor Store, will remember to take the few extra steps to the other side and buy a ticket from us.

Our raffles are always so well supported by Woodenders, and we really appreciate your help!

Submitted by Jo Clancy



THE GREAT TRENTHAM SPUDFEST
19 MAY 2012

Spudtastic fun, food, music, displays, children's games and activities, entertainment, competitions, spuds for sale, spud hut tours and much much more!

Includes opening night event on Friday 18 May and Spudtacular Dinner on Saturday 19 May

www.trenthamspudfest.org.au • mobile 0419 897 660



Top Hat Productions

- * 8 mm / 16 mm Film to DVD
- * VHS/Mini DV/ Hi 8 to DVD
- * Filming/Editing Services
- * Corporate & Special Events Productions

AVPA Multi-Award Winners
Accredited Producers



PH: 03 5422 3930




Communication is an essential part of today's business environment

Whiteboards are the perfect communication partner in any work environment

- Office
- Warehouse
- Factory
- Classroom
- Home
- Boardroom

WHITEBOARDS



PRESTIGE WHITEBOARDS

Combining style with functionality for a contemporary look. Available with aluminium, graphite & mahogany frames.

PORCELAIN WHITEBOARDS

Ideal for heavy duty use, these boards include a 20 year surface warranty.

PREMIUM WHITEBOARDS

Perfect for general office use & includes a 5 year surface warranty. Full Length pen rail & easy to mount.

BONUS ARTLINE CADDY KIT

- Available in 3 sizes
- 4 per caddy
- Aluminium frame
- 100% recycled plastic
- Full length pen tray
- Heavy duty brackets

Available in a wide range of sizes and frame styles, Featuring mitred corners, dry wipe, and all are wall mountable. Custom sizes available, portrait or landscape style.

CATERING FOR ALL YOUR BUSINESS NEEDS

Printing
Office products
Administrative services



P 5427 3092 E print@collieroffice.com.au
A Shop 5, 130 High Street Woodend

ADVERTISEMENT

Donna Petrovich MP

State Member of Parliament for Northern Victoria Region
Parliamentary Secretary for Sustainability and Environment

Working for the Macedon Ranges Community



Your Community Voice

☎ 5782 2011
84 Sydney Street, Kilmore
✉ donna.petrovich@parliament.vic.gov.au

Authorised by D Petrovich, 84 Sydney Street, Kilmore.

Heritage News

If you were unable to attend the unveiling of new plaques along the Family Heritage Walk which took place in March, a reminder that the supporting displays will remain at the Court House until the end of June.

It is always very gratifying to us to see the enthusiasm of the families as they engage in the preparation of these displays. Family members, who may not have been in touch for years, are suddenly exchanging ideas and sorting through their photo albums for photographs and other items which tell the story of the people being honoured along the walk. So before winter really sets in, why not stroll down to see the latest plaques and call into the Court House on a Wednesday to see the displays.



These displays supporting the trees and plaques dedicated to Margaret Robinson, Sally Shaw and Arthur and Audrey Else and the Godden Family, drew a large crowd after the dedication ceremony. The displays will remain in place at the Court House until the end of June and you are welcome to see them on any Wednesday.

Submitted by Janet Hawkins



TOWN & COUNTRY

Woodend Produce Store

31 Brooke St, Woodend

03 5427 2753 ELGAS

*Poultry, Stock & Horse Feeds,
Hay, Grain, Chaff, Pet Food,
Fencing, Pine Sleepers & Poles,
Concrete, Electric Fencing,
Tanks, Oils & Lubes
Irrigation, Garden Tools,
Potting Mix, Pea Straw, Fertilizer,
Herbicides & Much More!
Elgas LPG Deliveries
We fill BBQ Gas Bottles*

Come in and see what we've got!

Open 7 days

Monday- Friday 8.30 - 5.30

Saturday 8.30 - 4.00

Sunday 9.30 - 2.00

O'CALLAGHAN BROS FIREWOOD Supplies

- ▲ Split redgum firewood pick up or delivered
- ▲ Bagged kindling available
- ▲ Public weighbridge

OPEN 7 DAYS

**28 SAUER Rd New Gisborne
5428 1955 0488 957 090**



Specialising in:
CAR PARK KERBS • ASPHALT EDGING
GARDEN EDGING • VARIOUS PROFILES
REPAIR WORK



World Autism Awareness Day

A divinely sunny autumn day beckoned. Masses of multicoloured balloons face painting, the smell of sausages sizzling and lots of happy faces welcomed over 100 people to the Woodend children's park on Monday April 2nd. Families and friends came to celebrate the diversity that is Autism Spectrum Disorders (ASD's). Autism awareness day heralds the start of a whole month of activities throughout the world to promote community understanding of autism or ASD's.



Danielle and Nicholas Garner- Celebrating World Autism Awareness Day

This event was kindly sponsored by Cobaw Community Health in support of a new group that has formed in the Macedon Ranges to support families that have family member with an Autism spectrum disorder (ASD). This support group aims to be an invaluable resource for parents, carers and individuals with an ASD living in the Macedon ranges.

This is an independent group that will be auspiced by Cobaw Community Health. First and foremost this group hopes to provide a friendly space for parents and carers to catch up and have a chat with others that understand and can support each other. The Macedon ranges ASD support group also hopes to work on other levels, such as helping to create a sense of community and lessen feelings of isolation from the wider community that people who are affected by ASDs may feel. If you would like to join or sponsor the group please contact Fiona Le Nepveu on 5421 1693 email fiona.lenepveu@cobaw.vic.gov.au.

The local community has been very supportive of the group so far with generous donations toward a raffle. Thanks to the Village Larder, the Woodend Pharmacy, New Leaves bookshop, Switch Hair and Beauty and Macedon Ridge Winery. Raffle winners were Danielle and Nicholas (pictured) and Sandra.

Cobaw Community Health provides a range of services to families of a child or young person with an ASD through early childhood intervention services and paediatric allied health services, such as Occupational therapy, Speech pathology and Physiotherapy. For further information on these services for families in the Macedon ranges please call Prue Southey on 5421 1694.

Submitted by P. Southey for Cobaw Community Health

SPORTS NEWS Catch us if you can!

Congratulations to the Macedon Ranges Running Club's Start Running Group (SRG) participants (around 150) who completed their first non-stop running milestone on Sunday April 1. The weather turned out brilliantly allowing family and friends to cheer on the runners over the finishing line. A big thank you to all of the Macedon Ranges Running Club volunteers who woke early and left late to make this running milestone a huge success for all the runners and supporters.

But it's not quite over just yet for the Start Running Groups and their running leaders...it's back to training for the final five weeks of the 13-week program to achieve the ultimate goal - completing a 10km run non-stop in May. Then time to celebrate in style with a special Macedon Ranges Running Club cocktail party for all participants, leaders and assistants.

If you would like more information about Macedon Ranges Running Club please email macedonrangesrunningclub@gmail.com. Submitted by Lisa Cole,

PSYCHOLOGIST

Sam Luxemburg

Registered Psychologist

- Counselling in Woodend & Thornbury (Medicare rebate available)
- Counselling Training
- Myers-Briggs personality testing

Phone: 0428 270 401
www.luxcollege.com.au

STONELAYING & PAVING



Stonemason & Paver specialising in

- Retaining Walls
- Drystone Walls
- Stone Houses
- Paving
- Over 20 years' experience

Cameron Dunn
Ph (03) 5427 4778 Mob 0429 162 589

TAXI



Your Local Taxi Service
Bookings: 9310 5422

TRADE & SERVICE DIRECTORY

ANTENNAS

ANTENNA EXPERTS

- Digital TV antenna's & extra outlets
- NextG/Optus 3G signal boosting
LESS DROPOUTS, FASTER DATA SPEEDS
- Satellite installation
- Ph & data cabling

TEKWORKE We get things connected! **0411 155 617**

CHIROPRACTOR

Mark Brown 30 years experience

- Muscle realign & stretch techniques
- Gentle spine adjustments
- Elbows, wrists, kness, shoulders
- Headaches, migraines & athsma

Upstairs at Westpac Bank, 75 High St

Phone: 0407 526 403

HOME MAINTENANCE

Home maintenance & landscaping service including decking, pergolas, carpentry & painting.
Stuart 0409 150 629
AH 5427 2465

PAINTING

Call Steven
0402 079 482

TRADE & SERVICE DIRECTORY

CLEANING



Not enough hours in your day?
Need help managing
your home?

Stephen Farrell
Personal Services

Very reasonable rates
Through out the Macedon Ranges
Phone 0419 526 275



CIVIL CELEBRANT



'A creative,
inspiring and
professional
experience.'

LOUISE POTTER
CIVIL MARRIAGE CELEBRANT

MOB: 0438 302 218 pinc@bigpond.net

DRESSMAKER



Beryl's Tailoring

DRESSMAKING, ALTERATIONS,
BRIDAL, EVENING & DAY WEAR,
LADIES AND MEN'S REPAIRS

Beryl Bachelor
QUALIFIED DRESSMAKER, NEWHAM
BY APPOINTMENT ONLY
MON TO FRI 9 - 5

5427 0568 0418 510 179
berylb@vic.chariot.net.au

FENCING & GATES

Fencing & Gates

- colourbond
- timber
- picket steel & timber
- period style fencing
- all types of gates
- retaining walls

ph: 0419 005 185 5427 1192

GARDEN MAINTENANCE

Hyland Brothers

Property Maintenance & Services

- Mowing (includes ride-on)
- Edging, Pruning & Trimming
- Clean-up & Rubbish Removal
- Handyman Work/Odd Jobs
- Weeding & Mulching
- Servicing Macedon Ranges



Need a quote? "Ask the Hyland Brothers"
Col 0428 271 935 - Tex 0422 138 368
or 5427 1044

HOME INTERIORS

DECORATE

RENOVATE

Your Home or Room

With Style,

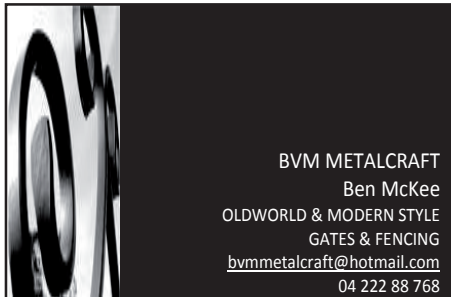
Design + Colour



Present Well
HOME INTERIORS

Call Danielle 0400 664 231 pwhi.com.au

METAL GATES



BVM METALCRAFT
Ben McKee
OLDWORLD & MODERN STYLE
GATES & FENCING
bvmmetalcraft@hotmail.com
04 222 88 768

PAINTING



Aardvark Painting

ABN: 49 178 405 936

- All Painting Works
- Associated Repairs
- Discounts Available
- Call for a Free Quote

0488 094 186 / 0488 095 186

Email: staff@apainting.com.au
Internet: <http://www.apainting.com.au>

PAINTING



BD CROSBIE PAINTING

Ben T: 5427 2164
M: 0431 205 576

Household & Commercial
Interiors & Exteriors
Painting, Staining & Oiling
Decking, Stairs & Hand Rails
Free Quotes

PAINTING

Painting & decorating

Residential & commercial
Rendering
Prompt & professional

Rigoni Painting
Phone 0430 371 001



PHYSIOTHERAPIST

Kyneton Physiotherapy
Robert Rouse

B. App. Sc. (Physio) Member A. Physio. Assoc.
Registered for Comcare, TAC, W/Cover, DVA

30 years treating Woodend folk
74 High St. (Corner New St.) Kyneton
5422 2290

PROPERTY & GARDEN MAINTENANCE

ENJOY YOUR PRECIOUS WEEKENDS

Josh's Home Maintenance trading as

TERRY'S GROUND CREW

Josh 0412 796 578

***Macedon Ranges vouchers accepted*

ALL MOWING AND GARDEN MAINTENANCE

TREE SERVICES



A&P Tree Services

- tree pruning / removal • stump removal
- tree planting / transplanting • rope & harness climbing
- confined space removal • fully insured

Professional commercial & residential tree maintenance
all work carried out by qualified arborist

Call Anthony 0417 059 969

TRENCHING

ASHBY'S TRENCHING

- Drainage & storm water
- Site levelling
- Cable and pipe laying
- Fencing

Phone Mark 0427 973 360

WATER TANK CLEANING

The Water Tank Cleaning Company
Central Victoria ABN: 65 156 529 387

- * Tanks should be cleaned every 2-3 years
- * Tanks can be full or low in water
- * Tanks cleaned without emptying

Mark or Paul

m: 0437 676 689

e: info@watertankcleaners.com.au

SPORTS NEWS



**Small,
medium or
tall?**

*Then you're just right for
basketball!*

The Macedon Ranges Basketball Association welcomes all children preps – grade 5s to experience the joys of basketball.

Reasons to get into basketball:

1. It's good fun!
2. It's a great way to improve ball skills.
3. It's fabulous value at \$50 a term (\$40 if you pay in the first 2 weeks).
4. It's easy – just bring your runners and come for a try-out at Buffalo Stadium.
5. It's social – grab a friend and bring them along too!
6. All of the above + more!

Mondays (girls only) 4 - 4.45pm: Preps – Grade 2,
4.45-5.30: Grade 2 – Grade 5.

Thursdays (boys & girls) 4 - 4.45pm: Preps – Grade 2,
4.45-5.30: Grade 2 – Grade 5.

For more details, go to www.macedonranges.basketball.net.au or contact: Kerry on 5427 1860 or 0415 076021 or korrirt@iprimus.com.au.

Submitted by Claire Green

**CUSTOM PICTURE
FRAMING**

OBJECT (3D) FRAMING
TEXTILE MEDIA
EXPERIMENTAL FRAMING
MIRRORS - TO YOUR DESIGN
FINE ART SALES

bexley's
OF WOODEND

93 HIGH STREET
WOODEND
(next to Maloa House)

P: 03 5427 3003
M: 0425 797 728
E: FRAMING@BEXLEYSOFWOODEND.COM
W: WWW.BEXLEYSOFWOODEND.COM

**Invitation to parents
of primary school students
to our
Information Evening**

Thursday May 3
at 7pm
Melton Road, Gisborne

Includes tour of college and light supper

gisborne.sc@edumail.vic.gov.au
Tel: 5428 3691
www.gisbornesc.vic.edu.au

Gisborne Secondary College

BE ON TOP OF YOUR TAX AFFAIRS BEFORE 30 JUNE 2012

Individuals, Trusts, Companies and Partnerships can all manage their tax through effective planning.

Tax planning can provide significant benefits by incorporating:

- Review of interim financial statements to identify planning opportunities
- Managing deductible business expenditure
- Identifying obsolete stock for write-off
- Identifying potential bad debts
- Ensure motor vehicle log books are accurate for business use percentage
- Ensuring superannuation contributions have been paid
- Capital Gains Tax (CGT) management
- Identifying small business and CGT concessions
- Small business entities may benefit by delaying motor vehicle purchases until after 30 June 2012 (\$5,000 immediate writeoff)
- Review of loan accounts (especially those to shareholders of a company)
- Determine eligibility for rebates and offsets
- Preparation of trust distribution minutes

To discuss further please contact Andrew Marshall or Janine Orpwood - 54273790 (85 High St, Woodend)

Langley | McKimmie

Chartered Accountants

www.langleymckimmie.com.au E: info@lmadvisors.com.au