

THE NEW WOODEND STAR



Circulation of 3340 throughout
Woodend postal district, Newham, Heskett, Ashbourne,
North Woodend, Hanging Rock, Carlsruhe, Cobaw.

AN INITIATIVE OF THE ROTARY CLUB OF WOODEND

November 2012

A Monthly Community Periodical

First Publication 1997

Volume Sixteen No 10

Super Spectacle for Woodend

A warm balmy night is the only magical ingredient required for a special open air cinema treat in Woodend next month.

To celebrate the 4th Birthday of the Woodend Children's Park, Superman Returns will be shown on a wonderful five metre inflatable screen to the public from 6pm on Saturday 24th November. It is a free entry event, generously supported by the Macedon Ranges Shire Council. This event also ties in with the Leukaemia Foundation's Light the Night fundraiser, where valuable funds will be earned through donations. For a \$20 donation, people can get their own beautiful gold, white or blue lantern with proceeds going to the Leukaemia Foundation.

The event aims to bring various community groups together in this wonderful open space for this one night, to raise awareness and funds for their own ventures. To kick start the evening, the Woodend Youth Music Collective will be performing live on stage at Robbie's Lookout, dedicated to Robbie Lodder who fought an amazing battle with Leukaemia when he was 11 years old.



Woodend Neighbourhood House will be on hand to support the event, Woodend Kindergarten will be selling sweets, 2nd Woodend Cubs will be holding a barbecue with burgers, sausages and drinks, and children from the WCP committee will be selling glow sticks, the proceeds of which will be donated to the Very Special Kids Farm here in Woodend.

Superman dress up is encouraged for young and old, and a prize will be awarded to the best costume. Obviously, this wonderful event will be again postponed if the weather is below 5°C, rainy or windy! Stay tuned and keep your fingers crossed for us!

The Woodend Children's Park has proven to be such a special venue for the community in the four years since its opening, and the project has continued its journey of enriching the lives of those who are a part of it. We trust that this event will be the start of many in the years ahead, bringing this special community together.

Submitted by Jane Walduck

Parish fête - Saturday 17th November

Live music, Devonshire teas, pony rides, face painting, Great Woodend Cake Competition and loads of fun for the whole family.

The Anglican Parish of Woodend is hosting its annual fête on Saturday 17th of November from 10am to 2pm in the church grounds at 15 Buckland Street Woodend.

"The fête is a great fun day for the whole family," commented Sylvia Mathews fête organiser.

"We are excited to have Sharyn Frantz from Woodend's Blackbird Cakes judging our cake competition," she added.



Children and adults can enter the competition with the chance to win great prizes including vouchers for Blackbird Cakes. Entries are free and cakes need to be delivered to The Norma Richardson Hall by 9.30am on fête day. Judging will be at 11am the same day.

To enter the competition just visit www.woodendanglican.org.au and follow the links to download the entry form or pick one up from Sharyn's new shop in Anslow Street.

continued on page 2



Rotary Club of Woodend

Would you like to learn more about Rotary?

The Rotary Club of Woodend is part of a world wide organisation committed to helping the community locally and overseas.



We have a range of interesting speakers who present to the club throughout the year. Woodend Rotary meets every Thursday at 6.45pm in The Victoria Hotel, Woodend.

Interested in learning more? Please contact Brendan Watters on 5422 6442.

Continued from page 1

For the non-bakers, there's plenty to entertain you too with live music and a BBQ throughout the day.

Children will love this year's fête; it's packed with activities for the youngsters. They can have their face painted, get a temporary tattoo, go for a ride on a pony, bounce on the jumping castle, enjoy popcorn or enter the colouring and cup cake decorating competitions to win great prizes.

There will also be the traditional, white elephant, book and plant stalls, a raffle for everyone to enjoy and a live auction.

"The parish fête is our largest fund raising event of the year. It raises valuable funds to maintain the operations of the parish. We look forward to seeing the Woodend community on the day," commented Fr Malcolm Thomas, Rector.

"If you've not yet visited our brand new Norma Richardson Hall, come along to the fête and enjoy a Devonshire tea. We'll be serving them in the new hall all day," he added.

For more information visit www.woodendanglican.org.au or find us on Facebook Woodend Anglican.

Submitted by Angela Van Damm

The New Woodend Star

An initiative of the Rotary Club of Woodend Inc.
The Bank, 75 High Street, Woodend, Vic. 3442
ABN 32 685 225 161 No. A0021518E

Layout & printing by Collier Office & Business Assist
EMAIL articles preferred: sales@collierooffice.com.au

Circulation: 3340 copies throughout Woodend and district

Disclaimer: Articles and comments published in this newspaper are the result of contributions from local groups and relevant news articles pertinent to the Woodend district. Neither the Rotary Club of Woodend Inc., The New Woodend Star nor the editorial team are liable for any mistakes, omissions, or misprints. It prints and makes no representation as to the truth or accuracy of any description, and accepts no liability for any loss suffered by any person who relies on any statement contained herein. The opinions expressed are not necessarily those of the editorial team. The committee reserves the right to omit, reject, cut, alter or otherwise re-work submitted articles to make them suitable.

Committee: Barry Napthine, Ivor Johnson, Claudia Green, Brendan Watters, Alexia Downie, Sue Macklin & Jane Watters

Closing date for inclusion of articles or advertising for each issue is the 15th of the month prior to publication Information for Advertisers

Prices for advertising 2012 only. All rates include GST & are priced per month.

- Business card (55mm x 90mm)\$52 inc GST
- Trade Page (60mm x 40mm).....\$38 inc GST
- Quarter page (90mm x 134mm).....\$105 inc GST
- Half page (190mm x 134mm)....\$198 inc GST
- Full page (190mm x 277mm) ...\$338 inc GST
- Insert (of your printed brochure).....\$246 inc GST

Advertisers: please note – it is in your interest to book and pay for a year in advance, as a 10% discount applies to any full year pre-paid booking. Any existing pre-paid ads will revert to the new rate on completion of the pre-paid period.

Advertising bookings to be made with Alexia Downie on 5427 3092 or sales@collierooffice.com.au. Accounts queries can be made to Sue on 5427 4089 or nws@johnsonwoodend.com.au Mail should be directed to: New Woodend Star, C/- The Bank, 75 High Street, Woodend 3442.

Woodend Star Publication Dates for 2012

December December 3rd

Woodend Star Publication Dates for 2013

February	January 28 th	March	February 25 th
April	March 25 th	May	April 29 th

Changes to advertisements, new advertisements or cancellations must all be made by email or in writing. All advertisements will be placed and charged for until notified otherwise.

SUBSCRIBE TO THE NEW WOODEND STAR

Do you live outside the New Woodend Star distribution area? Be sure to receive your copy every month by subscribing. A yearly subscription of 11 issues is just \$34.50. Post to New Woodend Star, C/- The Bank, 75 High Street, Woodend 3442.

Name: _____
 Address: _____
 Phone: _____ Enclosed: Cheque/Money Order for \$34.50

Halloween Community Event

This year Halloween falls on Wednesday 31st of October and once again the Rotary Club of Woodend will be conducting another free sausage sizzle for all members of the Woodend community. This event will be held at the Woodend Childrens Park commencing at 6 pm.

Over recent years there have been a growing number of Woodend businesses and local children who have made an



effort to dress up in the modern Halloween theme. In the spirit of

the modern interpretation of Halloween, Rotary will have lolly bags available for all children in costume.

The Rotary club started the event three years ago and it has grown each year with hundreds now attending. "It is the Rotary Club's way of thanking

those members of the community who support our various activities throughout the year. We would like to see a lot of people turn up in costume to make this a great community event" said Rotary Vice President Grant Hocking.

Submitted by J Watters

Another way to keep fit!

Last week six items of exercise equipment were installed at various points around the Rotary Community Exercise Track completing another stage in this exciting project.



The cost of each station including installation has been kindly donated by local businesses and residents. A sign is to be erected shortly by Woodend Rotary at the track entrance acknowledging the generosity of these benefactors.

All equipment stations will be surrounded by a layer of woodchips which will provide a "softfall" base and also prevent weeds affecting the area. Negotiations are currently being held with the Parks Department to arrange regular grass slashing on either side of the track.

A park bench has already been installed by the Parks Department at the end of the first stage for those joggers needing a well earned rest!!

Details of the final phase of the project – an extension of the current circuit – is still to be decided following submissions to the Macedon Ranges Council by various parties.

Submitted by Brandan Watters

Woodend Rainfall Report 2012

Each month we add the rainfall details and the year to date total. Our rainfall report shows 2007, 2008, 2009, 2010, 2011 and 2012 comparisons. Please note that your own rainfall readings may not exactly match these.

	2007	2008	2009	2010	2011	2012	
January	83.5	17.1	0.08*	54*	227.5	31	Jan
February	27.4	22.1	2.5*	71.5*	115.0	133	Feb
March	35.7	25.4	42.5*	121*	35	84	Mar
April	20.2	20.4	51*	45	63.5	35.5	April
May	95.7	43.7	30.5*	39	73.5	54.4	May
June	105.1	88.7	66.5*	98.5	69	126.8	June
July	83.3	112.5	76.5*	87.5	82.5	102	July
August	34.8	52.2	107.5*	148.5	56	113.7	Aug
Sept	49.8	42.0*	88.5*	97	98.5	54.6	Sept
Oct	12.1	13.0*	46*	154.5	86		Oct
Nov	91.0	67.2	99*	193	82		Nov
Dec	101.2	96.0*	60*	93	120		Dec
YTD:	739.8	600.3	670.5	1202.5	1119.5	732.0	

2012 rain fall is 28.82 inches

For the year of 2011 there was rainfall of **1119.5mm**
1 inch = 25.4 mm therefore the total year 2011 is 44.07 inches

BUDBURST WINE & FOOD FESTIVAL

Saturday 17 & Sunday 18 November 10am - 5pm

Budburst Returns for 2012

As the days lengthen and the sun slowly regains its strength, the grape vines are stirring from their winter slumber. The transformation from dormant crop to fruit laden vines will soon begin - heralded by the annual Budburst Food & Wine Festival on 17th – 18th November.



Get ready to be a part of the great annual pilgrimage to the cellar doors of the Macedon Ranges to enjoy local wine and produce from over 20 of the Region's finest vineyards. This year's Budburst Wine and Food Festival occurs on 17th – 18th November and promises a great weekend in the country less than an hour from Melbourne's fringe. Experience the region's acclaimed cool climate wines and visit the charming townships of Kyneton, Trentham,

continued on page 4

KYNETON EQUIPMENT & PARTY HIRE

FOR ALL YOUR HIRING NEEDS

8-12 BEAUCHAMP ST PHONE (03) 5422 2311

KYNETON VIC 3444 FAX (03) 5422 2930

Email: kynhire@bigpond.net.au
website: www.kynetonhire.com.au

O'Callaghan Bros Firewood Supplies

• SUMMER SPECIAL •

REDGUM FIREWOOD BULK LOADS
BLOCK OR SPLIT
SEMI & 12 mtr LOADS DELIVERED

ALL AREAS

OPEN 7 DAYS

28 Sauer Rd New Gisborne
5428 1955 0488 957 090

Woodend, Lancefield and Glenlyon.

The Budburst Wine and Food Festival is the perfect opportunity to tour the Macedon Ranges and visit wineries, winemakers and locations not usually accessible to the public. Macedon Ranges is home to some of the region's oldest and most acclaimed vineyards, including two winners from this year's Federation Square Wine Awards, Granite Hills and Chanters Ridge. Budburst offers a unique and personalised experience tasting new and exclusive wines. You can meet the winemakers, hear the stories behind each vintage and taste the diversity of the Macedon Ranges wines in the vineyards and wineries where they are grown and made.



Visitors to Budburst purchase a \$15 tasting glass which entitles them to entry and free tastings at all participating wineries across the weekend. As in previous years the program will feature wine makers and restaurateurs matching food and wine; from formal dinners to wood fire pizzas, gourmet barbeques and picnic hampers, there will be something to please every palate. And nothing matches good food and great wine like the sound of fabulous music and Budburst always has more than its share with blues and roots, world music and pop performances scheduled across the weekend.



Taste the wines and share the passion of the Macedon Ranges' winemakers and restaurateurs when you take the road less travelled through the Macedon Ranges region during the Budburst Wine & Food Festival November 17th – 18th 2012.

For more information visit www.budburst.com

Submitted by Paterson PR

**DON'T FORGET TO MENTION
THE NEW WOODEND STAR
WHEN SUPPORTING OUR ADVERTISERS**

BEAUTY IN TOUCH

Classical Beauty Therapist – Kerry Robinson

- Deep Cleansing Facials ▪
- Waxing ▪ Manicures ▪ Pedicures ▪
- Eyelash tinting ▪

Please call 0412 479 901 for an appointment
40A South Road, Woodend

All local groups, clubs and committees are invited to submit articles for publication

CASTLEMAINE—GISBORNE CLEANING SERVICE

CHRISTINE ADAMS, P.O. Box 240 CASTLEMAINE 3450

**Carpet Cleaning Specialists
Duct Cleaning, Window Cleaning, etc.**

For all your cleaning requirements

- no job too big or too small -
- obligation-free quotes

christineadams9@bigpond.com

Mobile: 0419 006 591



Heskett
Estate
Macedon
Ranges

Visit us during Budburst

17th & 18th November 10-5pm

*Sample our award winning wines, whilst
enjoying our delightful food.*

Live music both days

- Sparkling Macedon
- Chardonnay
- Gewürztraminer
- Pinot Noir

NEW RELEASE
2010 Chardonnay &
The Margaret Sparkling
2006

*With roots deep in the rich soil of the
Macedon Ranges, Heskett Estate is a project
of love and passion, with all grapes picked by hand.*

856 Romsey Rd Heskett

5427 0707

Carlsruhe Market

Carlsruhe Annex is a fabulous second campus that all Woodend Primary School students go to in grade 4. We go to Carlsruhe every morning except on a Wednesday. On a Wednesday we go to the main campus so that we can do all our special activities like Art, Music and P.E. Carlsruhe Annex is a farm with animals including, chickens, guinea-pigs, rabbits, sheep and fish. We have 2 new baby chickens named Midget and Batman. Midget the girl is red, yellow and black. The boy Batman is very dark black. We also have a new guinea-pig named Ginger who has red eyes and orange fur. We have one lamb called Jessica and three sheep named Chelsea, Dot and Fudge. We learn to care for the environment as well as learning literacy and numeracy. We are looking forward to our upcoming camp at Phillip Island.

At the Carlsruhe 2012 Market you can see all these things and much, much more. It is being held on Sunday 11th November. There will be lots of fun activities and wonderful bargains as well as a range of delicious food. We hope to see you there. By Grade 4 students Maeve, Miette and Ciara.



Tapestry made by students in 1986. It won first prize at the Melbourne Show and hangs in the the main classroom

JULIANA SMITH BN (Mid), LLB, GDLP
BARRISTER & SOLICITOR

Family and Criminal law
General advice

by appointment:

27 Urquhart Street, Woodend or 72 Queen Street, Bendigo

T | (03) 5444 1181

E | info@jlaw.com.au

SCALE
 BUILDING
 DESIGN & DRAFT



Residential Building Plans

Sketch Design & Planning
 Bushfire (BAL) Assessments
 Site Plans & Site Analysis
 Town Planning Permits
 Building Permits

FREE DESIGN ANALYSIS
 KARYN BIANCO

0425 723 183

On your marks, get set, let's go Little Athletics!

Woodend's Little Athletics season has started well with a record turn-out for the come and try event held on the 12th October. Children were introduced to a range of track and field events and were excited to be performing like little Olympians!



Are these Australia's next top athletes?

This year the club is fortunate to have 4 additional volunteers that have completed an Introduction to Coaching - course of instruction in Track & Field Athletics which is a great resource for the club and all participants.

Little Athletics Woodend meets each Friday at the Buffalo Sports, starting at 5:00pm.

For further information, please refer to the website. www.littleathleticswoodend.com.au

Submitted by Fiona Makin



CarasMatic

GIFTS FOR ALL OCCASIONS

Looking for something special this Christmas?

YOU MAY FIND IT AT CARASMATIC
LEGO SYLVANIAN FAMILIES SCHLEICH
MELISSA & DOUG KATE FINN GOLLIES
GLASSHOUSE AND ECOYA CANDLES
LARGE RANGE OF PHOTO FRAMES
TRINKET BOXES JEWEL BOXES
QUILTS THROWS
AND MUCH MORE

LAYBY AVAILABLE

CARASMATIC

HAS SOMETHING FOR EVERYONE

100 High Street Woodend 3442

5427 3766

carasmatic@bigpond.com



Communities *owning their future.*

Community conversations continue ...

In October, Great Place Woodend hosted an evening of conversation and questions with our community and the West Ward candidates for the Macedon Ranges elections that recently closed. The conversations focussed on several topical areas including the condition of the town's infrastructure regarding roads and footpaths – highlighting in particular, the impact that this has on young, disabled and elderly people in being able to move around the town and access facilities. Another popular topic was the balance between infill development and the larger cluster developments that are emerging around Woodend and some of the consequences. All candidates highlighted the importance of engaging in the forthcoming Town Structure Planning exercise that is about to commence and encouraged us to have our say on the future of our town.

Having continued our conversations into the issues impacting education and learning in Woodend for people of all ages, we next turn our attention to the economy of Woodend and our final session for 2012 when we will be considering several points including:

- defining and measuring the Woodend economy – from where do we derive our income;
- the risks and opportunities for the Woodend economy (eg. efficient railway, the NBN);
- the importance of strong local business for the sustainability of Woodend; and
- the distribution and retention of wealth in Woodend.

This session will be held at the Victoria Hotel, Woodend on Tuesday 27th November, at 6.45 for 7.00pm.

Please RSVP to greatplacewoodend@live.com.au if you are interested in attending – all are welcome.

To find out more about Great Place Woodend : Visit us at Facebook on Great Place Woodend, Follow us on Twitter @Gr8PlaceWoodend, Email greatplacewoodend@live.com.au or Visit www.GreatPlaceAustralia.com.au

Submitted by Andrew Wilson-Annan for Great Place Woodend



FLYING START FITNESS
make it happen!

- Strength / Core / Cardio
- Spin Cycle Classes
- Bootcamp
- Boxing
- Kids & Teens Fitness
- Expert Running Coaching
- Corporate Fitness
- Personal Training
- Mobile Service available



Phone 0425 111 765

Collier Office and Business Assist

FOR ALL YOUR BUSINESS NEEDS

Printing

Office products

Administrative services



It's time to get your marketing and personal Christmas material organised!

Christmas Cards

Create cards for your clients, your friends or your family. Print your own designs or photos, or choose from our templates. Full colour front with either printed or blank inner.

Two standard sizes offered, with custom trimming available.



Customized Calendars



Want to send a calendar but don't have time, ability or software to create it? Our Layout Service can create your custom calendar using logos, photos and specifications you provide.

P 5427 3092

E print@collieroffice.com.au

A Shop 5, 130 High Street Woodend

Woodend Cemetery Trust News

Woodend Cemetery is currently undergoing some refinement. As the cemetery is run by volunteers, along with two part time employees, care must be taken as to which plants are allowed to be planted. Many introduced plants within individual graves which may invade other parts of the cemetery may need to be removed and cannot be allowed to remain.

Additionally, to help maintain the safety of friends, visitors, employees and the environment, glass jars and other containers will be removed. Flowers may still be placed at the graveside. Spent flowers will be periodically removed and disposed of, as will faded and aged artificial flowers.

Other weeds within the cemetery are currently being included in a removal program - these include ivy, broom and vinca. We hope to progressively improve the surrounds for current and future generations.

We may be contacted for enquiries by either telephoning the Secretary, Keryn Allan on 0417 011 300, or in writing to PO Box 179, Woodend 3442.

Submitted by: Philip Johnson for Woodend Cemetery Trust

1st Woodend Cubs Out and About

What an adventure 1st Woodend's Burke Cub Pack had with their end of term sleepover and travel by train to Melbourne to visit the Immigration Museum in order to complete their Travellers Badge.




Cubs and Leaders travelled on trains, trams, buses and their own two legs. One of our Cubs, Sam, worked out that we walked 14.5 km. Members of 1st Woodend Scout Group are everywhere – even in Melbourne. Wontolla received a call from across the Yarra River and it was Shada from our very own Wills Cub Pack, so we gave her a big Cooee!

At the museum we learnt a lot about people, cultures, their journeys and the contributions that immigration has made to our country. As you can see from the photo the Cub Scouts were disguised as sleuths as they stealthily stalked about looking for clues in a sailing ship.

1st Woodend membership enquiries can be directed to either Dietlind Schutte (5427 1633) or Leia Macartney (0429 331 695)

Submitted by Leisa Macartney (1st Woodend Scout Group)



**WOODEND & DISTRICT
PODIATRY**

John F. Shapland
Resident Practitioner

Reg. Department Veteran's Affairs

5427 2064
Business and After Hours

1895 Mt. Macedon Rd., Woodend

Joan P Jane 0403 046 048
PSYCHOLOGIST 5426 4165

- Stress • Post Traumatic Stress •
- Anxiety • Depression • Relationship • Family •
- Mental Skills Training • Sport • Self Esteem

The Bank **Bulk Billing**
75 High St. (Medicare - DVA - GP Referral)
Woodend 3442 Provider Number 2827013A
joanjane@bigpond.com



*Feel sensational
at The Spa*

Our team of professional and passionate therapists can assist you with all of your needs... From essential waxing to purely indulgent facials, massages, body treatments and more, we are here 6 days a week.

The Spa
Beauty Therapy Centre

Gisborne | 3/31 Brantome St Gisborne 3437 | 03 5428 8800
Woodend | 41 Anslow St Woodend 3442 | 03 5427 3322
www.thespa.com.au



King of the Castles

Jumping Castle Hire
Now in Woodend

Present this ad for
\$20 off hire

www.kingofthecastles.com.au

ph: 0435 607 365

Jumping Castles

Meta Massage

SPORTS/REMEDIAL MASSAGE, SHIATSU, REIKI
Raymond White

Telephone 0411 268 336

for an appointment

18 years experience • Chronic and acute conditions
Sports injuries • Rehab work

Woodend Landcare

Over the years, Landcare has tried to determine what the vegetation around Woodend might have comprised prior to European settlement. We have used many sources to come up with a short list of species which we have planted along the creek and in other areas around the town. We think it is important to re-introduce indigenous species, even though our native wildlife does also enjoy many introduced species.

For example, the numerous introduced large conifers provide a major food source for the magnificent Yellow Tailed Black Cockatoo and other cockatoos. Clearly these birds would have relied on indigenous plants with similar seeds in the past. As the introduced pines and cypresses reach the end of their lives, it becomes more important to plant replacement food plants and what better than local indigenous conifers and the local Silver Banksia (*Banksia marginata*). The Banksia has the additional virtues of attracting nectar feeding birds as well as the seed eaters and we have found it to be very adaptable, even tolerating some waterlogging.

Landcare is including these species in our planting mix and they are available at our local indigenous nursery, "Acres Wild". So if you are thinking of planting an attractive large shrub or small tree, why not consider a Silver Banksia or one of our local conifers such as the Black Sheoak (*Allocasuarina littoralis*) or the Drooping Sheoak (*Allocasuarina verticillata*). The Black Sheoak has been used to great effect along the Heritage Walk if you want to check them out..

Finally, for what I consider the very best "fence hider" there is a small native conifer which grows to no more than about 3 metres, has a naturally perfect shape and beautiful blue/green foliage. It loves growing in Woodend although it is native to Tasmania and it is called *Callitris Oblonga*. Much better than any introduced conifer that I have seen.

Submitted by Peter Yates



The next meeting of the Woodend Unit of Red Cross will be on Thursday 1st November at 1.30pm. We meet at 39 High Street Woodend. New members will be made very welcome.

Submitted by M. Hocking



What's on at BUFFALO SPORTS STADIUM

	Monday	Tuesday	Wednesday	Thursday	Friday	Saturday	Sunday
Morning	Tiny Tackers Dance	Janes Gentle Exercise	Occasional Care	Occasional Care	Kindergym	Basketball	
Afternoon	Ladies Netball	Strength For Health	Ladies Basketball	MMA	Strength For Health	Cricket Oval	
Night	Basketball	Basketball	Basketball	Basketball	Junior Club Netball	Cricket Oval	
	ZUMBA	Ladies Netball		Mixed Volleyball	Soccer		Basketball
		Aikido		Aikido			



54273411



Open Garden- A Garden For All Tastes

It is rare to find a diverse range of garden styles in the one spot. You may visit one garden for a perfect show of spring bulbs; another for the best roses; or yet another for a stunning woodland walk.

But a garden in Newham has cleverly combined many of these styles and more. And the garden will be open to the public this month.

The labor of love of Penny and Hilary Roberts, the garden at 159 Dons Road, Newham has been evolving for just 9 years, yet its beauty and diversity belies its relative youth.

So what can the visitor expect?

A romantic formal hedged garden featuring beautiful roses and peonies;

A rambling bush and flower garden with many unusual



plants and a surprise around every corner; A series of quirky walkways, which lead the visitor through stunning woodlands;

An interesting vegetable plot, which uses up-to-the-minute design and horticultural practices;

A native wildflower bed;

And many other less structured garden beds featuring rare plants. All of this is set off by the borrowed landscape – sweeping green pastures up to the tip of the Jim and stunning views over Newham and on to Hanging Rock.

This is a garden which truly inspires. If you only visit one garden this spring, make it this one!

The garden at 159 Dons Road, Newham will be open to the public on Saturday 10th November and Sunday 11th November from 10am to 4pm each day. Refreshments will be available and plants will be for sale. Entry is \$10 per adult. All proceeds go to Newham and Heskett Primary Schools.

Submitted by Frances Spain

Magnetic Websites

Martin Beaumont

PHONE 03 5427 4478
MOBILE 0414 274 988
HTTP www.magneticwebsites.com.au
EMAIL martin@magneticwebsites.com.au

Developing websites for the Macedon Ranges and beyond, ask how we can help you get online

Celebration Cakes for any occasion.

Call in for a consultation, sweet treat, or cake decorating supplies... We'd love to see you!

BLACKBIRD CAKES
37A ANSLOW STREET WOODEND
5427 2473

WWW.BLACKBIRDCAKES.COM.AU

Massage Pilates Remedial Rehabilitation
with Pamela Kell

By appointment
22 Goode Street
Gisborne
5428 1000
0408 093 098

Assisting in the repair and maintenance of your body

Spring Farmers' Market"

Consumers eager to support small, regional producers are encouraged to use the Farmers' Market at Woodend on Saturday 3rd November as their first port of call for fresh, delicious, local nourishment.

Fresh fruits & vegetables, pork, beef, lamb & smallgoods, free-range eggs, organic sourdough bread & pastries, award winning pies & chacuterie, fudge, condiments & home-made curry preparations, fresh juice, extra virgin olive oils, plants, regional wines, high quality stockfeed, live poultry & much more. Home produce exchange from 9am onwards, bring your excess garden produce, preserves, seeds, plants etc to trade with others!

Free-face paint for the kids & live music from Sarah Wilkinson. Dogs welcome on a leash. Please bring your bags, baskets & trolleys!

More information please call Meggs Hannes 0407 860 320

Submitted by Meggs Hannes



P. 5782 2011 • F. 5782 2099
 E. donna.petrovich@parliament.vic.gov.au
 W. www.donnapetrovich.com.au

*Working for
the Macedon Ranges*

**Macedon News:
ENVIRONMENT**



DONNA PETROVICH MLC
 Member for Northern Victoria Region
 Parliamentary Secretary for Sustainability and Environment

“The Baillieu Government is investing in a range of programs and initiatives aimed at protecting and enhancing Victoria’s natural environment.

The Macedon Ranges is renowned for its stunning natural beauty. It is truly a spectacular part of Victoria and I feel very privileged to be a resident and representative for this region and its vibrant communities.”

Donna Petrovich

TACKLING ROADSIDE PESTS AND WEEDS

A Roadside Weeds and Pests Program (RWPP) grant of \$89 832 to the Macedon Ranges Shire Council will help it deal with the problem of plant and animal pests along local roads.

The new RWPP would support the Macedon Ranges Shire Council to plan and implement activities for the long-term management of ‘regionally prohibited’ and ‘regionally controlled’ plant and animal pests on rural roadsides.

The funding available to the Macedon Ranges Shire Council is part of a Victorian Coalition Government program to reduce plant and animal pests over the next three years.

The recent *Bailey Report on Roadside Weeds and Pests* recommended that councils are best placed to control weeds and rabbits on local roadsides and this program will help our local council to do just that along local roads in the Macedon Ranges.

The Victorian Government’s \$7.8 million RWPP is available to 56 councils with responsibilities for rural roads to implement an approved Roadside Weed and Rabbit Control Plan.



Left: Jeanette Powell, Minister for Local Government; Donna Petrovich and Peter Walsh, Minister for Agriculture, at the announcement of the Roadside Weeds and Pests Program (RWPP) of \$7.8 million over three years.

REDUCING BUSHFIRE RISK

The Macedon Ranges is one of the State’s most bushfire-prone areas. The Victorian Coalition Government recognises that planned burning is the best tool we have to reduce the risk to lives and homes from future bushfires.

Cool mosaic burning also protects the health of bushland by minimising the devastating impacts of intense large-scale fires like Black Saturday and the Alpine Fires.



The Coalition Government has committed \$43.7 million to support the Victorian Bushfires Royal Commission recommendations for more planned burns and for free mapping data to emergency response agencies.

In 2011-12 DSE and Parks Victoria completed 197 149 hectares of planned burns – more planned burning on Victoria’s public land than in any other year since 1991, despite it being one of the wettest years on record.

For more information on prescribed burning and sustainability and environmental initiatives in Victoria please visit www.dse.vic.gov.au

SUPPORTING LANDCARE

The Victorian Landcare Program delivers services and initiatives such as grants programs, the Landcare magazine, website and other resources.

The Coalition Government has provided an additional \$1 million for small-scale grants to boost the great on-ground work Landcare does.

The Coalition Government recognises Landcare’s value in the community and its outstanding record in achieving positive outcomes for the environment.

For more information visit www.landcarevic.net.au



Woodend Library News

Woodend Library has a huge range of DVDs and CDs available for loan - and the best thing about it is they are free to borrow! Don't forget - if you are not a Goldfields Libraries member it is free to join - just show 2 forms of I.D. (one with your current address).

You can browse our catalogue online (www.ncgrl.vic.gov.au) and reserve DVDs or CDs from home. To keep abreast of new additions to our collection, check out the 'New Resources' feature.

Here's some of our latest acquisitions...

Movies:

21 Jump Street; Hugo; Extremely Loud and Incredibly Close; Gone; J. Edgar; My Week With Marilyn; Salmon Fishing in the Yemen; The Kid with a Bike (Le gamin au vélo); The Lorax; The Vow; The Woman in the Fifth; Transformers prime: Darkness rising; Tinker, Sailor, Soldier, Spy.

TV series:

Big Love (Season 5); CSI (Season 10); Dalziel and Pascoe (Season 7); Dance Academy (Season 2); Dexter (Season 6); Downton Abbey (Season 2); How to cook like Heston; Silent Witness (Series 13 & 14); The Borgias (Season 1)

Music CDs:

100% Hits, NOW & So Fresh - Winter 2012; NOW: Hits of Winter 2012; Heroes (Willie Nelson); Little broken hearts (Norah Jones); Looking for myself (Usher); The ol' razzle dazzle (Missy Higgins); Shower Songs (as heard on ABC Classic); Spirit Bird (Xavier Rudd); Winners 2012 (CMAA - Tamworth); The Sapphires (original soundtrack)

You can borrow 10 CDs and 10 DVDs for one week - and if no-one else reserves them you can renew them for another week - just give us a call (5427 2074).

Submitted by Susie Prestney for Woodend Library

Three Macedon Ranges Open Gardens

Presented by Kyneton District Health Service

Sunday 25th November, 10.00 am – 4.00 pm, \$6 per garden or \$15 for all three.

"Eungella" 23 Ladye Place Woodend

Peter and Ann purchased this 3 acre property in 2001, when its vegetation consisted of dense, 3 metre tall thickets of gorse, with a few Gums and Wattles. It sloped gently to the north, with the Creek as its boundary. Once the clearing was completed, the Gums turned out to be the Eucalyptus aggregata, or Black Gum, which is Woodend's "own" tree, and locally endangered.

The lowest section was fenced off and planted with local indigenous species, which are developing nicely with very little help after a good start.

The rest of the property is a more conventional garden. Suitable exotic trees and shrubs were added to the existing native trees, plus a small orchard and vegetable garden. The north facing deck has many potted plants, including annuals, succulents and herbs. Many desirable native birds and animals visit, as well as some introduced pest species.

"Woodlands" 97 Whitelodge Rd Woodend (Entrance from Old Lancefield Rd)

Sandie and Peter purchased this seven acre property, part of a former farm, in 2004, with no intention of having anything other than an open, parklike garden. The finding of large rocks in their car-parking area was the catalyst for a total change of plans, and as a result the garden bears its present appearance.

Various separate areas have been planted in many different ways. There are four Rose Beds, planted with mainly

Continued on page 3

Truck & Bobcat Hire



- Paving Turfing Rockeries
- Paling & Colourbond Fencing
- Watering Systems Retaining Walls
- All of your garden and driveway construction catered for

CD & MC Muir Pty Ltd
craig@bobcatcraig.com
0417 331 085 5427 3095

Naturally Divine

For Hair, Body and Soul

Try any colour, face framing foils, stylish cut and blowdry/straighten all for just \$99.00 (long hair extra)

Ladies cuts from \$25.00

Come and see our award winning stylist Tracy, for excellent personalised service.

ph: 54226196 / 0411399493

You have questions  We have Answers

CHINKA (HEP) STEEL - Your "One Stop" Legal Shop

Expert Advice Available

- * Family Law—who gets what?
- * Been charged by the Police?
- * Conveyancing - avoid the traps!
- * Need a Parenting Agreement?
- * Need a Co-habitation Agreement?
- * Executor responsibilities?
- * Been left out of the Will?
- * Buying/Selling a Business?
- * Do you have a current Will?
- * Are you a Victim of Crime?

Ph: 03 5427 2477
74 High St Woodend
chinka@chinkasteel.com.au

www.chinkasteel.com.au

Visit our website for information on various areas of law, useful links, downloadable brochures, plus much more!



LEADING HAND CARPENTRY
COMPLETE BUILDING SOLUTIONS

· quality workmanship · effective project management
· new homes · extensions · renovations

  **REGISTERED**
Building Practitioner

Call 0439 360 896 or email shannon@lhcarpentry.com.au

Continued from page 11

pale-coloured David Austin roses. There is a conifer bed, underplanted with daffodils; a Cornus bed, underplanted with bluebells; a fernery; a flourishing vegetable garden; a bed for succulents and cacti; a large orchard, fully netted, through which the chooks roam; and a greenhouse/ conservatory. The back paddock was planted with local native plantings, and Eucalyptus seedlings and other indigenous plants went into the front paddock.

**"Tugurium" 8 Centenary Ave Macedon
(No parking available in Centenary Ave)**

Stephen Ryan is known all over Australia from his books, talks, and his time as the presenter on the ABC's "Gardening Australia". As might be expected, his garden could be said to be overflowing with plants, many from Stephen's specialist nursery, "Dicksonia Rare Plants", on Mount Macedon. Plant lovers can almost lose themselves in its delights, and Stephen will be there to talk to those who want more information.

Submitted by Jo Clancy

Carlsruhe Community Corner

Good news... The adult exercise equipment is in place next to the children's play area and ready for all the adults in the Carlsruhe area wanting, and needing, some extra exercise. Hope to see you there.

Consultation with the Macedon Ranges Shire continues regarding the development of the Common and Yelka Park. Choosing the shelter, toilet, seating and signage has been completed and costing of the projects is well advanced. The next meeting is to take place on Wednesday the 17th of October. Find further information at www.carlsruhe.com.au Landcare Group will hold their meeting on Monday the 5th of November at 7.30 pm.

All community members are welcome to attend.

Submitted by Margaret Glen

Change. Made Real.

Looking for solutions to stubborn problems?
Solutions are within reach – discrete, personal, powerful.

For sessions via Skype, over the phone or in Woodend:

Call
0419 217 229

Email
change@preetihelena.com

www.preetihelena.com

Preeti Helena
MCouns, BEd
Counsellor, Coach, Consultant

What's New?



30% OFF

*We're clearing out all stocks of
single bed linen in November.
Once they're gone ... they're gone!*

ZAPPA-do

3/87 High Street, Woodend
5427 1270 • www.zappado.co.au

BLACK FOREST

• Sales • Service
• Spare Parts

**Mowers
&
Brush Cutters**

5427 2693

**Blackforest
TYRE AND AUTO**

• GENERAL MECHANICAL REPAIRS • BATTERIES • WHEEL ALIGNMENTS
• SERVICING ALL MAKES AND MODELS • NEW & SECOND HAND TYRES • HANDS FREE CAR KITS
66 URQUHART STREET, WOODEND

**Woodend BATA Late night shopping 30th November,
& Christmas Festival 1st December**

**I love Mini Maestros because...
"I like playing instruments & singing"**
A/ina 3-4 year old class

Children love playing percussion instruments & musical games with Mini Maestros. Best of all, they have fun while they learn!

**Share the love of music with your child in 2012
Enrol Now!**

From 6 months to 5 years of age

Call Jo 0417 703 690
Macedon Ranges, Sunbury

Mini MAESTROS

www.minimaestros.com.au

Grantra
HOME IMPROVEMENTS
Specialising in Bathroom Renovations

PO Box 736, Woodend 3442
0418 175 877
www.grantrahomeimprovements.com.au

Master Builder REGISTERED Building Practitioner

WESTERN
WATER



Western Water is preparing for this year's fire danger period.

However, we cannot guarantee to maintain water pressure or an uninterrupted water supply in the event of a bushfire.

It's important to have an independent water supply.

Go to www.westernwater.com.au to view our *Bushfires and your water supply* brochure to find out more.

PREPARE. ACT. SURVIVE.

FireReady 

1300 650 422  westernwater.com.au BECAUSE WATER MATTERS

Western Water says "Be fire-ready with water"

Western Water is warning Woodend residents that the town's mains water supply may be cut in the event of a fire this summer.

"It's important for people to know that they need an independent water supply if they are planning to stay and defend their home," Western Water's Managing Director, Neil Brennan, says.

"If electricity is cut or our infrastructure is affected by fire, our pumps may fail, cutting the mains water supply," he says.

"If we have extremely high demand for water from customers and the CFA during a fire, water pressure may also drop."

Mr Brennan advises residents to consult their local CFA about their options for an independent water supply and plan ahead.

"We are also doing all we can to prepare for summer, with backup generators ready and water storage tanks at high capacity to cope if we have a fire," he says.

Mr Brennan says Woodend residents can also help the community to be prepared for fire season by 'adopting' a fire hydrant.

"The CFA needs to be able to access fire hydrants quickly and easily," he says.

"You can help by keeping fire hydrants near your home free of debris and vegetation, and calling us if you think a hydrant needs maintenance."

To find out more, visit Western Water's stall at the Bushfire and Emergency Services Expo in Riddells Creek on November 25th.

Submitted by K Smith for Western Water

THE NEW WOODEND STAR *the voice of the community*



kitchen cook table home
Blue Orange Concepts

**for all your
preserving needs**

Shop 2
Telephone

130 High Street, Woodend 3442
03 5427 4500

open 7 days

Lachlan Fleming
CONSTRUCTIONS PT
SERVICING THE MACEDON RANGES

EXTENSIONS
RENOVATIONS
NEW HOMES



Sarah's Ear Candling

Can be beneficial in the relief of:

- ♦ Sinus problems
- ♦ Stress & anxiety
- ♦ Headaches
- ♦ Fatigue
- ♦ Excessive wax
- ♦ Hearing difficulties
- ♦ Allergies
- ♦ Tinnitus (ringing in the ears)
- ♦ Depression

Mobile Service Available

Woodend Massage & Natural Therapies - 70 High Street Woodend
0419 235 320



Coming Soon...

The Amazing Spiderman	31/10
Snow white and the Huntsmen	07/11
Brave	21/11
Magic Mike	26/11
Dark Knight Rises	28/11

65 High St, Woodend, Ph: 54274011
www.networkvideowoodend.com.au

“Dr Livingstone, I presume?”

“Well, no, Josh’s Ground Crew, actually.”

Such was the state of our rural block that we hacked our way through the undergrowth to meet the men we’d asked to come and clean us up in readiness for sale. It was a huge job, too much broom and blackberry, fallen trees, rocks all over the place, and paddocks out of control.

We discussed The Situation. We discussed The Plan of Attack. We discussed The Price. We said, “Go for it!” Undoubtedly one of our best decisions.

I imagine that my ‘wish list’ for the tradie I want when I make that call is pretty similar to yours. I want them to –

Come when they say they’ll come, Arrive on time, Communicate with me, Think about the job, Follow my instructions, Make intelligent suggestions, Work efficiently, Do a good job, Be personable and pleasant to have on site, Give value for money.

Not rocket science, you’d think, but hard to find.

Well, what can I say? These guys are legends. They get a tick on every count, and a 110% report card. Not only are they fabulous to deal with, they are proactive (can you believe this?). Our auction date was hurtling towards us, and the dream team were booked again for the day before. The spring weather had turned the grass into a tropical forest, but the weather forecast was horrific. I phoned Josh. Before I could articulate my panic, he said “I’m sure you’re worried about the weather, so I’ve brought your job forward a day, just to make sure we get it done in time for your auction.” I was speechless. Was it relief? Disbelief?

Blind gratitude? Or was it just that I could no longer speak at all at this stage in the proceedings?


So they put themselves out to get our job done, and made a huge difference to our property. We have now, very wisely, sold the ride-on mower – a move we heartily recommend. All we want to do from here on is phone Josh.

And, yes, we sold! Thanks in no small part to the dream team.

Submitted by Joan & Sam Luxemburg, Very happy campers

Paul Cox
0408 638 516

REC
13242



Kyneton Data & Electrical

Your Local Electricians

INSTALLATION, REWIRING, REPAIRS & MAINTENANCE OF
ALL ELECTRICAL, TELEPHONE & COMPUTER EQUIPMENT

This newspaper is supported by



ENJOY YOUR PRECIOUS WEEKENDS

JOSH’S GROUND CREW

0412 796 578

Spring into action for Spring
BOOKINGS ARE FILLING FAST!

- Lawn mowing
- Brush cutting
- Rubbish removal
- Fire wood cutting
- Fire wood splitting
- Window cleaning
- Gutter cleaning
- Pruning – Fruit trees & Roses
- Hedge trimming
- Weeding
- Handyman maintenance services

**Macedon Ranges vouchers accepted

NOW HIRING!



\$5 PARKING
(Entry normally \$10)

Hanging Rock

Craft Markets Australia presents a market day out at... Hanging Rock

A marvellous variety of food, a relaxed atmosphere and a wide selection of high quality crafts and produce, combine to make a market you'll want to keep coming back to!

Sunday, DECEMBER 2nd, 2012
Sunday, MARCH 17th, 2013

Operating from 10am to 3pm
P 03 5976 3266

South Rock Road,
Woodend, VIC
Via Calder Fwy M79
- Mel Ref: 609 G9
No dogs in market area

More  - www.craftmarkets.com.au






JUST ASK GEOFF

Rural & Domestic
Handyman Services

0417 311 806

For all those jobs the others won't do...

- Farm Fencing & Yards
- Basic Stables & Horse Boxes
- Wood & Implement Sheds
- Chook Sheds
- Basic Home Office Ideas & Solutions
- General Cabinetry & Woodworking
- Creative Woodworking Ideas & Solutions

www.justaskgeoff.com.au
 Join us on  Just Ask Geoff
 email info@justaskgeoff.com.au



TOWN & COUNTRY

Woodend Produce Store

31 Brooke St, Woodend

03 5427 2753 ELGAS

*Poultry, Stock & Horse Feeds,
 Hay, Grain, Chaff, Pet Food,
 Fencing, Pine Sleepers & Poles,
 Concrete, Electric Fencing,
 Tanks, Oils & Lubes
 Irrigation, Garden Tools,
 Potting Mix, Pea Straw, Fertilizer,
 Herbicides & Much More!
 Elgas LPG Deliveries*

We fill BBQ Gas Bottles

Come in and see what we've got!

Open 7 days
 Monday- Friday 8.30 - 5.30
 Saturday 8.30 - 4.00
 Sunday 9.30 - 2.00

Ask Geoff! He's here to help

Born and raised in Bacchus Marsh, I grew up on a dairy farm and was soon milking cows, fixing fences, irrigating, and carting hay etc. No job was too small and every job was essential to the proper running of the family farm.

I left the farm to get a trade after finishing high school, becoming an apprentice aircraft mechanic with Government Aircraft Factories. I then moved to Australian Airlines (TAA) and by 1995, when I moved to Line Maintenance, we had become Qantas, where I stayed until 2012.

During that time I developed a love of woodworking that continues to this day. We renovated our Californian Bungalow home, doing most of the work myself. I built my first shed and renovated the old garage into an art studio for my wife Annette, who along the way learnt lead lighting and made all of the lead light windows inside the house.

In 2004 we moved to Woodend – a friendly country village we happily call home, which very much reminds me of Bacchus Marsh in my youth. We believe it is important to be active in our local community, supporting the local businesses, attending community events, shopping in the town etc. We joined the Woodend CFA soon after moving.

Since that time we have been busy improving our bushland property and helping friends and family with their projects. With the experiences I've gained in most aspects of farm maintenance, practical bush skills, renovating, wood working, cabinetry, the mechanical skills in the aviation business, plus a solid dose of life skills, I feel I'm well qualified to take on most of the tasks you need done. I believe I'm in a unique position to help local residents make the most of their country life style.

As the business name says, Just Ask Geoff. I'm here to help!

Submitted by Geoff Wells

Furniture Upholstery

SCR Upholstery is a new, locally owned business.

We offer

- all aspects of upholstery to modern and antique furniture
- free quotes
- free pick up and delivery



Call Steve - 0419 434 927

Marg's Freerange Childcare

Have your child cared for in a loving home environment with acres to run & play

- Full & Part time positions available
- Excellent references available

Police check, First Aid, CPR Asthma & Anaphylaxis certified

Marg 0412 460 578

Woodend area

COLENZO

...A THING FOR SPRING

Saturday, November 17

'BUDBURST'

Fritters

Pork ribs, potato salad and coleslaw

Strawberry shortcakes

Friday, November 23

DINNER & SHOW brought to you by
COLENZO & 'SWEET NOTHING'S'

Join us for a luscious confection of
homegrown entertainment with a
hearty and homestyle meal

TICKETS ON SALE AT COLENZO

Please call 54272007 for details

Saturday, November 24

Vegetable carpaccio with
pecorino and dried figs

Saltbush Spring lamb rack
and a bean ragout

Lemon delicious and cream

Saturday, December 1

Ligurian fish soup

Wood roasted quails with Rita's
potatoes and asparagus
tossed in parmesan

Tira mi su

Saturday, December 8

Spring bruschetta of peas and
mint, goat cheese, and tapenade

Fillet mignon with sauce
bearnaise

Cherry frangipane

HOURS

Monday - Thursday 8.30-4

Friday 8.30-9pm

Saturday 8.30-4 &
re-open at 6.30pm for dinner

HOLIDAY HOURS

Monday December 24 CLOSED

Tuesday December 25 CLOSED

Wednesday December 26 CLOSED

Thursday December 27 OPEN...

and a return to our usual hours.

We will be OPEN for New Years Eve

We will be CLOSED January 1.



T is for
TOGETHER

Eating Out, In & Around Woodend

the Vic

BAR & BISTRO
THE VICTORIA HOTEL WOODEND

**Book Your Christmas
Celebration Now**

See our website
for details

www.vicwoodend.com.au

email: vicwoodend@bigpond.com
03 5427 2721
67 High Street, Woodend



**Now Open for
Dinner
Every Saturday!**

Open 7 Days

81 High St, Woodend

Phone 5427 3399

info@thevillagelarder.com.au

www.thevillagelarder.com.au

facebook: The Village Larder

twitter: @villagelarder



**Award winning Bread,
Pies & Cakes**

Shop 1 & 2, 115 High St, Woodend
Open daily from 7am
54272486

www.bourkies.com.au



Trying to organise
dinner with friends that
you have been talking
about for months?
6 course
Degustation Dinner
Matched Regional wines
Private dining room
with open fire
\$150 per person
reservations essential

CAMPASPE HOUSE GOLDIES LANE WOODEND 03 5427 2273
www.campaspehouse.com.au

*Space is still available in the
Eating Out Guide.
Prices start at \$52 per month*

* FAB FOOD
* FUNCTIONS & CATERING
BY ARRANGEMENT
Bookings Essential
BYO wine only
Light Snacks Mondays
Free entry for
Macedon Ranges residents

Tel: 5427 0295

Large range of Australiana Gifts

**Hanging
Rock
Café &
Country
House**

Eating Out, In & Around Woodend



UPCOMING EVENTS

Friday 2 November from 6.00pm
Friday night drinks, shared platters available.
A la carte restaurant open for dinner
Availability strictly limited. Reservations essential.

Thursday 8 November
OAKS DAY
Ladies Luncheon at The Bentinck
A fabulous day of racing, food, at a magnificent venue and great company.
Ticket price \$120 includes drinks (not incl spirits) canapés and 2 course lunch.
Fashions on the fields, live crosses to the races, sweeps and more.
10% off for group bookings of 8 or more!
*Availability strictly limited, book now so you don't miss out!
Visit our Website for more information*

Friday 14 December
Christmas Functions at The Bentinck
Treat your team to something a little bit special this Christmas at The Bentinck
We are the perfect location for your end of year dinner or break up celebration. Great value packages available.
Private dining groups of 30 or more
*Availability strictly limited. Reservations essential.
We have no availability on Christmas day.*

8 Carlisle Street, Woodend
p:(03) 5427 2944 w: bentinck.com.au

CONFERENCES WEDDINGS EVENTS



Do you know how many chemicals your family could be eating?

All our fresh produce are Australian grown with no chemical sprays, artificial fertilisers or genetically modified materials.
just as nature intended
Nature's Garden Organic Produce is guaranteed Australian grown and 100% certified organic
Call in and see just how affordable our extensive 100% organic range is at
Shop 4A Collier St, Woodend (cnr Anslow St)
or call 5427 4406
www.naturesgarden.com.au

Naturally, better products



Holgate Brewhouse – Bar & Restaurant



Microbrewery Hotel with cosy fires, stained glass windows and friendly atmosphere.
Award winning local beer made on site. Delicious house made bread, pies and desserts.
Function rooms & stylish accommodation in the heart of Woodend.
Open 7 days lunch & dinner.

79 High St Woodend
Ph 54272510
www.holgatebrewhouse.com

Send a Christmas message with The New Woodend Star

Once again, The New Woodend Star will publish a special Christmas insert with the December edition.

It's a great way for business, both large & small to thank their staff, and customers for their support through out the year.
Please email sales@collierooffice.com.au call Alexia on 5427 3209 to book your space.



Olive Jones
of
Macedon

RESTAURANT
BEER GARDEN
WINE BAR

Open Thursday-Monday
Lunch and dinner
Breakfast on weekends
Barbecue & Wood-fired Pizzas
On Monday nights

54263700
40 Victoria St. Macedon
See our profile in AGFG

Trampolines **LAY-BY NOW**
FOR CHRISTMAS!

Well Below Retail
SAVE \$\$\$

» Free Delivery**
 » Free storage ready for Christmas

Includes **SAFETY NET - PADS - LADDER**

On site installation available
12FT = \$375
14FT = \$445

*Prices subject to change without notice
 **Macedon Ranges

For Inspection and Enquiries: Jason Johnson Ph:0400528129
 just_trampolines@hotmail.com




JIGSAW STAIRCASES

0408 153 124

PO BOX 93 WOODEND 3442
 SERVICING BUILDERS AND OWNER
 BUILDERS ALL OVER MELBOURNE
 AND CENTRAL VICTORIA

WWW.JIGSAWSTAIRCASES.COM.AU
E: JIGSAWSTAIRS@OPTUSNET.COM.AU




ADVERTISEMENT

JOANNE DUNCAN MP
 MEMBER FOR MACEDON

As your local Member of Parliament I am keen to listen to any concerns or ideas you may have.

Please don't hesitate to contact me for assistance on any State Government matter.

Warm regards,
Joanne Duncan



Shop 14/9 Goode St, Gisborne VIC 3437
 P: 5428 2138 F: 5428 2919
 E: joanne.duncan@parliament.vic.gov.au
 www.joanneduncan.com.au

Authorised by J. Duncan, Shop 14/9 Goode St, Gisborne

Bright new play

Woodend Playgroup's fun new mural

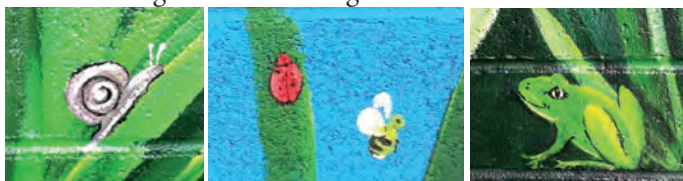
Spring has sprung and children, parents and carers at Woodend Playgroup are all enjoying the bright new mural in the outdoor play area.

Local artist, Jenny Downie, has painted a coloured, fun garden scene to brighten up the area.

"At a recent working bee mums and dads got together to paint the dull brick wall bright blue and the grey concrete bright green, then Jenny worked her magic," commented Playgroup President Faye Cormick.



"It's more than just a picture, the little ones have fun finding and counting the ladybirds, bumble bees, snails, birds and frogs and the smiling sun is such fun"



"Our next project is to develop an interactive learning area inside for everyone to enjoy," added Faye.

Woodend Playgroup is a great place to make life long friends. Children from 0-5 are all welcome. To join email Faye at woodendplaygroup@gmail.com, call Playgroup on 5427 2583 or pop in and say hello at 45 Forest Street.

Submitted by Faye Cormick

Wear a White Ribbon this November

Dear Friends

November 25th November marks a very important day in our community. It's the International Day for the Elimination of Violence Against Women, better known as White Ribbon Day.

White Ribbon Day seeks to change the attitudes and behaviours that lead to and perpetuate violence against women. The stereotype surrounding abuse is that it consists only of physical abuse. Physical abuse is only one aspect of the problem. Other forms of abuse are just as real, just as important, just as dangerous. There is no 'lesser' form of abuse,

Of course, most men are not violent towards women, but many of us ignore the problem, or see it as something

Continued on page 20

which doesn't have anything to do with us.

Take a stand against violence. By wearing a white ribbon and taking the White Ribbon Oath, you will be joining a community of like-minded people determined to treat all women with respect. Taking the Oath is a powerful symbol of your intention to be part of real change to stand up for the women in your life.

The money raised through the sale of white ribbons goes to the White Ribbon Foundation for education and male leadership programmes aimed at men and boys around Australia.

If you would like more information about White Ribbon Day visit www.whiteribbonday.org.au

If you or someone you know is concerned about domestic violence; for urgent assistance please call 000, or for help and information, please call LifeLine on 13 11 14 or Mensline Australia on 1300 78 99 78.

From Joanne Duncan, Member for Macedon

Dreaming of food, wine and style at the House....

This month at Woodend Neighbourhood House why not try one of our exciting new workshops.

- Wine appreciation (Thursday 6.15pm-7.15pm, \$20 each) - Starting on 1st November and running for three consecutive Thursday nights, you can impress your friends by learning about good local wines and how to match wine with food.
- Cooking workshops (Thursday 7.00pm-8.30pm, \$20 and Saturday 2.30pm-4.30pm, \$25) - Novembers workshops have a focus on family, friends and Christmas. Learn how to successfully manage and plan for your family meals and get some ideas about what you can cook and how to use your leftovers (3rd, 8th & 10th of November). You can also learn how to prepare yummy canapés and easy Christmas party food with no fuss for busy people (15th & 17th of November). Learn the secrets of how to cook the perfect Christmas roast and that's not just turkey roasts (22nd & 24th of November)! There's also a Quick and easy BBQ sessions, so no more excuses for serving charcoal (29th of November & 1st of December). All cooking classes are done in the master class style with professional, local chef Erica. There are very limited places so book now!
- Nutrition workshops (Thursday 9.30am-11.00am \$20 each) – want to revamp your favourite recipes to make them healthy (8th of November), maybe you want to read food labels properly (22nd of November) or learn about the role of food in active lifestyles (6th of December). You'll find it all in these workshops.
- Hair care and styling workshops (Thursday 5.00pm-6.30pm \$60 for 4 sessions) – learn to braid, straighten, up style & do party hair, so you can get really creative in party season (1st -22nd of November).
- Dream workshop (Monday 5th, 12th, 19th of November 12.30pm-2.00pm, \$15 each) – learn what your dreams mean in this series of workshops.

So stop dreaming about it and book a workshop today!

Call 5427 1845 for information and booking or visit www.woodendnh.org.au.

Submitted by Julie Wilson-Annan



KEEP YOUR COOL THIS SUMMER...

Do you live in a hot home with poor thermal performance and high energy costs? Are you dreaming of a cool home and much lower energy bills?

Does this sound like your home?

- ✓ Your home is 'heat box' hot in the summer and freezing cold winter.
- ✓ Once your heating or cooling is turned off, your home is uncomfortable again within 10 -15 minutes.
- ✓ Your thermostatically controlled heating/cooling system only switches off for a short time.
- ✓ Your energy bills are extraordinarily high!

Now, it is easy to retrofit your home to be cool in summer and cosy in winter, with significantly lower energy bills (up to 80%)! All the expertise to retrofit YOUR home is right here in the Macedon Ranges with Australia's leaders in energy efficiency retrofit, ecoMaster!

Call 5428 8526 and speak with Amanda, Sue or Lyn for a discussion about your home's potential; or pop in and see our new showroom, corner of Barry & Ladd Road, New Gisborne.

www.ecoMaster.com.au



Are You Sick of Having Love Handles?

Do you want firmer looking thighs, legs and stomach? Are you finding it difficult to get rid of those last few kilos? Fat Cavitation helps you lose weight instantly to give you the body you deserve!

Fat Cavitation is a NEW, Non Invasive treatment system, for the safe reduction of fat and cellulite. It's painless and a safer alternative to liposuction. When ultrasound is applied to specific areas of the body such as the abs, thighs or buttocks. A careful, selective release of ultrasound waves combined with a process Called 'CAVITATION' targets and destroy's fat cells in the body. The end result is a **visible reduction in fatty tissue**. For more information visit us in the salon or look on our website. We also have 17 limited one off packages available.

SPECIAL OFFER: For just \$295, book a Fat Cavitation Session at Alissa Kate Salon and Spa and receive this amazing package deal!

Fat Cavitation Session \$295

FREE consultation with a fully qualified therapist valued at \$45

FREE Radio Frequency to firm and tighten the skin valued at \$290

FREE lymphatic drainage to rid the body of liquefied fat valued at \$135

FREE Second treatment valued at \$295

That's \$1060
of value for just
\$295! You save
\$765!

But HURRY! This offer is only available to the first 37 callers, so phone Alissa Kate on 5427 3822 NOW!

Our Amazing Guarantee: if you don't lose weight after your first Fat Cavitation session, you'll get it for free!

Testimonial: "I had my first session and lost 4cm's around my waist. I can not wait for my next treatment!" Alissa, Salon Owner, Woodend

Be wary of cheap imitations: Alissa Kate offers no other treatment like it!

EXCITING NEWS

Due to high demand Joanne has increased her days. She is now available for appointments on Mondays!!!

Acrylic Nails new Price \$45

Gel Polish Special \$25

Spray Tan \$25

Eyelash Extensions \$99



Alissa Kate Salon and Spa, 3/115 High Street, Woodend

www.beauty-salon-woodend.com alissa@alissakatesalon.com

Benefit Concert for Resonance String Orchestra

On November 17th a special Benefit Concert will be held in aid of Woodend's Resonance String Orchestra. Founding member of the internationally-acclaimed Flinders Quartet and renowned cello soloist Zoe Knighton will be presenting a program of Bach's solo cello suites. Funds raised will go towards the orchestra's Visiting Artists Program, which employs a range of professional musicians to work with the orchestra's students.

"The six suites by J.S. Bach form the centrepiece of cello literature and their mystique, ingenuity and sheer beauty continues attracting all lovers of music. They have become some of the most loved pieces of string music – perfect for bringing attention to the wonderful work Resonance String Orchestra is doing with Woodend locals.

I am so proud to be associated with such a vibrant group of musicians!" Zoe Knighton

The concert will be held at 2.30 pm at the St. Ambrose Church, Woodend, on Saturday, 17th of November. Tickets \$20/\$15 or Family tickets \$55.

www.trybooking.com/BVVO

Submitted by R Franks

Woodend BATA

Mark the date in your diary! Woodend's traders will be hosting late night shopping on Friday 30th November as well as a Christmas Festival on Sunday 1st of December.

With loads of great deals and plenty of Christmas cheer, it's a great way to support your community and prepare for Christmas

Submitted by Karen Cousens



Empowering Birth Preparation Class

A One Day Intimate Workshop with a Holistic Approach to Pregnancy, Birth and Early Parenthood

Dates: 7 Oct & 18 Nov 2012 and 17 Feb & 21 Apr 2013
Time: 10am to 4.30pm
Venue: Ohana Healing Centre, 677 Mt Macedon Road, Mt Macedon
Cost: \$100 individual, \$155 Couple, \$90 doulas/midwives
Enquiries: Rachael McLeod – 0415288438
rachael@birthbynature.com.au www.birthbynature.com.au
Bookings essential – numbers strictly limited.

MADDEN'S PORTABLE SAWMILLING SERVICES & SALES

Turn your unwanted trees & logs into VALUABLE TIMBER



Call Craig on 0410 275 714

ATO BUSINESS AUDITS

The ATO is upping the ante in relation to its field audits of small to medium enterprises (SMEs). The businesses under review in the 2012 - 2013 financial year include:

- Plastering
- Cafes
- Defence force personnel
- Information Technology managers
- Plumbers

TIPS for being prepared:

- Keep your records up to date (invoices/ receipts/ financial statements)
- Ensure all tax registrations and lodgments are up to date & completed on time
- Periodically review your situation to ensure your tax position matches your current circumstances
- Get advice for any issue which is complex or may have some risk which needs to be resolved.

Please give us a call for further information or assistance.

Riverwood Group Pty Ltd
Accountants, Advisors & Planners
 111 High Street Woodend
 2/19 Bourke Street Kilmore
Phone: 5427 8000
www.riverwoodgroup.com.au
 Email: admin@riverwoodgroup.com.au



BAKERY LANE GALLERY

Amanda AISH
 Marian ALEXOPOULOS
 Robin BAKER
 Anita BARLEY
 Richard CHAMERSKI
 Helen COTTLE
 Ann-Maree GENTILE
 Lisa HONEYCHURCH
 Neil MATTERSON
 Bev MACLEAN
 Mick PATTERSON
 Michael PARKER
 Dawn ROBINSON
 Lorna RYAN BURDEN
 Jessie SZIGETHY GYULA
 Lorna THRIFT BROOKS

OPEN NOW

42B Anslow st Woodend, VIC 3442

HOURS wed - sun 10am to 5pm or by appointment

CONTACT

www.facebook.com/BakeryLaneGallery
bakerylanegallery@gmail.com
 dawn 0411 025 445

Capital Radiology opens



Capital Radiology will commence their services at Brooke Street Medical Centre in October.

Capital's services include general radiology (plain film) as well as ultrasound services. Capital apologises for the delay in set-up.

Whooping cough

Whooping cough (pertussis) is still in our community. This highly infectious disease is transmitted via air-borne droplets from coughs and sneezes. Immunisation can prevent the illness which can be seriously debilitating and at times fatal. Babies are especially at risk. They are too young to have completed the vaccinations required for immunity.

The Government has now closed its free program of immunisation for parents of new-born babies. Nevertheless, those in contact with new born babies especially should consider immunisation. Vaccinations do not provide life-long immunity and so re-immunisation is needed. People may be susceptible to pertussis 5-10 years after their last vaccination (1).

Many private health funds cover a range of immunisations.

1. Ebdon, A, Royle, J & Massie, J "Whooping cough: optimising prevention". *Medicine Today*, June 2011.

Farewell Monash medical students

Our current group of 4th year Monash medical students leaves at the start of November. They go on to complete both written and practical clinical exams. We wish them all the best.

Thank you to all patients who have involved themselves in the students' consultations. Your willingness to participate is of great assistance to their education and skills development.

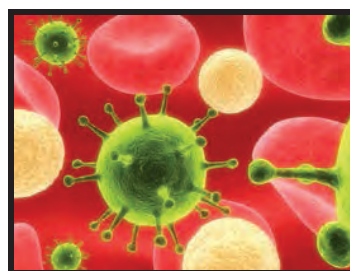
Our next group of medical students arrive in February 2013.

New doctor for Brooke Street

We take great pleasure in introducing Dr. Dan Wijeratne to the Practice. Dan comes with general practice experience having worked in Sunbury before joining the Brooke Street team.

Urinary tract infections

Unfortunately urinary tract infections (UTIs) are common. UTIs often occur in women, babies and the elderly, although men can certainly be affected. Symptoms include the frequent urge to urinate, even when there is little urine to pass; a burning sensation on urinating; an ongoing sensation that the bladder is full; pain above the pubic bone and blood in the urine can also be experienced. Symptoms in the elderly and babies may be less specific – see your doctor.



These infections are often caused by bacteria such as *E. coli* – the reason being that *E. coli* is present in the anus which is only a small distance (especially in women) from the opening to the urinary tract (urethra). However other micro-organisms could be involved. See your doctor if you experience symptoms.

Sometimes the infection enters the kidneys and this presents serious health concerns. Symptoms such as chills, fever or lower abdominal or back pain may indicate kidney infection. See your doctor for treatment.

To help prevent a UTI: wipe from front to back when visiting the toilet (ie. from the urethra to the anus); empty your bladder directly after sexual activity; drink plenty of fluids to wash out the urinary system.

Further information about UTIs can be found at The Better Health Channel.

[http://www.betterhealth.vic.gov.au/bhcv2/bhcv2/bhcv2/Urinary_tract_infections/\\$File/Urinary_tract_infections.pdf](http://www.betterhealth.vic.gov.au/bhcv2/bhcv2/bhcv2/Urinary_tract_infections/$File/Urinary_tract_infections.pdf)

This page is proudly sponsored by the 19th HOLE SHOPPING CENTRE



Upcoming Events

October

- 28 Woodend's Teddy Bear Show
- 31 Kyneton Music Festival 2013 – Closing date for musician's applications
- 31 Halloween Community Event – Woodend Children's Park

November

- 1 Rotary Youth Leadership Awards – Closing date for applications
- 3 Woodend Farmers' Market
- 3 Newham plant sale
- 5 Carlsruhe Landcare meeting
- 7 Tylden Primary School Concert "Land of Oz"
- 8 Kyneton District Health Woodend Aux. Meeting
- 8 Australian Decorative & Fine Arts Society evening – Kyneton Town Hall
- 10-11 Open Garden - Newham
- 11 Mount Macedon Challenge
- 11 Carlsruhe Market
- 14 Macedon Ranges Film Society
- 16 Kevin Kropinyeri @ Newham
- 17 St Mary's Church fete
- 17 Carlsruhe Community consultation
- 17 Zoe Knighton – Benefit concert for Resonance String Orchestra
- 17 – 18 Budburst Wine Festival – Macedon Ranges
- 18 Literature discussion – Red Door books Lancefield
- 18 Malmsbury Village Fayre
- 18 Sugar & Spice market
- 24 Tylden Primary School 150th celebrations
- 24 Film Night- Children's Park
- 25 Open Garden 3 locations Macedon Ranges
- 25 White Ribbon Day
- 25 CFA Riddells Creek Summer ready
- 27 Community conversations _ The Vic Hotel Woodend--
- 30 Late night Shopping

December

- 1 Woodend Farmers market
- 1 Christmas Festival WBATA
- 2 – 8 Rotary Youth Leadership - Camp Oasis
- 24 Crib St Mary's
- 24 10.00pm "Midnight" Eucharist St Mary's
- 25 10.30am Eucharist at St Mary's
- 30 Late Night Shopping in Woodend

January

- 5 Woodend Farmers Market

March

- 2-3 Relay for life
- 10 Family Heritage Walk Dedication
- 16 Woodend Carnival St Ambrose School

COMMUNITY GROUPS CONTACT DETAILS

- Alcoholics Anonymous, Friday night, Cobaw Community Centre, 0409 131 144
- Australian Breastfeeding Association, Heather, 5427 2398
- Cobaw Thursday Walking Group 5427 3340
- Daylight Masonic Lodge, 5427 2480
- 1st Woodend Scout Group, 5427 2848, Leisa 0429 331 695
- Friends of Macedon Ranges Library, Sheila/Don 5427 3644
- Garden Club, 5422 6062 / 5427 3340
- Kyneton Municipal Band, Doug, 0411 420 113
- Lancefield-Macedon Ranges, Relay For Life, Melissa, 0438 831 427
- Living Word Christian Church, 5429 6327
- Historical Society, Courthouse, 5427 2523
- Macedon Ranges & District Motor Club, 10 Webb Cres, New Gisborne 1st Wednesday each month 8pm
- Macedon Ranges Animal Aid, Buffalo Sports Stadium, 5427 1752
- Macedon Ranges Bridge Club, 5420 7595
- Macedon Ranges Families of Children with Disabilities Support Group, 5427 3365
- Macedon Ranges Residents Assoc., 5427 1481 or 5427 2651
- Macedon Ranges Photographic Society, Ron Mathews, 5427 3284
- Parent Support 4 LD, - Kerrie 0414 432 158
- Probus, 5427 2003
- R.S.L., Anslow Street, 5427 3122
- Red Cross, 5427 1260
- Rotary Club of Woodend, meetings weekly at Vic Hotel Thursdays 6.45pm, Brendan 5422 6442
- St. Mary's Guild, 11am, 4th Wednesday of month
- St. Mary's Street Stall, 9-12 noon outside Woodend Newsagency (2nd Sat of the month)
- Woodend Art Group, Railway Station, 5427 1659
- Woodend Business & Tourism Group woodendtraders@gmail.com
- Woodend Landcare Group, Jo 5427 1909 or Doug 5427 2666, 3rd Tues Meeting, 4th Sunday Working Bee
- Woodend Hanging Rock Petanque Club, Hanging Rock Reserve, 5427 2477
- Woodend Lions Club, Meetings 2nd/4th Wednesday each month, Barry McDonald, 5427 1272
- Woodend Neighbourhood House, 47 Forest St, 5427 1845
- Woodend Pony Club, 5427 2793
- Woodend Senior Citizens Club, Comm. Centre
- Woodend SES Training Nights Monday, Urquhart St
- Woodend Tennis Club Nadine, 0439 399 838
- Woodend Winter Arts Festival Inc., Jacky, 0417 225 268

Ian Marks Liquor
1300 627 575 ext 24 &34

Blue Orange Concepts: homeware
5427 4500

Woodend Pizza & Pasta
5427 3777

Coles Supermarket
5427 2377

**Collier Office & Business Assist
and Woodend Copy Centre**
5427 3092

Pets Haven
5427 3603

Mitre-10 Woodend Hardware
5427 2314

BP Woodend
5427 2248

Target Country
5427 4366

Macedon Ranges Travel Services
5427 4777

Kosmac & Clemens: optometrists
5427 4577

Woodend Cycles
5427 2662

Salvation Army Family Store
5427 4421

Loose Change Bargains
5427 4466

Bodywise Underwear
1300 66 17 66

Australia Post
5427 2600

Feeling Framed
5427 4455

The Spa Beauty Therapy Centre
5427 3322

HIGH STREET SHOPS

Color Me Cooper
5427 1454

Chelleon For Hair
5427 3246

RT Edgar Real Estate
5427 1222

Woodend Bakery Cafe
5427 3434

MACEDON RANGES SELF STORAGE

- * 7 day access
- * Individual units
- * Affordable prices
- * Insurance available
- * Now Fully Alarmed

Store your:
* Cars
* Boats
* Business documents
* Furniture etc.

Lot 3, Hoyle Court, Kyneton 5422 1898
(Off Beauchamp St) 5422 3488

CROWTHERS FURNITURE

Showroom opening soon

- Wardrobes - Entertainment units - Outdoor rooms
- Bathrooms - Sideboards - Libraries - Kitchens

Follow on facebook

0458440455 crowthersfurniture@gmail.com
Website under construction

BUDBURST WINE & FOOD FESTIVAL

Saturday 17 & Sunday 18 November 10am - 5pm

Woodend Self Storage

(Vic) Pty Ltd

- 66 Units available
- Full security
- Trailer hire available
- 7 day access
- Affordable prices
- Insurance available



For any enquiries please contact
Leonie or Dennis Barker
5427 4175

Has our rubbish tip moved?

We live in an amazing community-orientated township... why though has the mentality emerged that the doorstep of charitable opportunity shops are a free dumping ground for rubbish.

As business traders and frequent observers, we are alarmed to see the growing piles of 'junk' left on the doorsteps of the Woodend Salvation Army Op Shop every Monday morning.

The Salvos op shop hours of business are Mon – Fri 9am-5pm and Sat 9am-1pm. We appeal to the wider Woodend Community to continue the patronage of our op shops and support their valuable work but to be mindful of the important role and effort carried out by the dedicated staff and team of volunteers. The Salvos recycle items in clean and good condition to be sold in order to raise funds for community projects and those in need of goods & services and humanitarian assistance within our society.

The majority of goods left at the op-shop are of good quality, however, it is the obvious emergence of 'dropping off unsaleable rubbish', soiled mattresses, broken furniture and treating the Salvos as the weekend tip which is a concern. The reason we have a rubbish transfer station in our town is because this is the correct site for depositing rubbish.

If you are aware of those who perpetuate this behaviour perhaps you might contact the local police station with their name or registration number. Then they may be reminded of their community obligations and the correct manner for the disposal of their unwanted goods and/or rubbish, without placing further drain on the resources of our hard working Australian charities, who assist those in need. Put your hand in your pocket and pay to dispose of your rubbish at the transfer station as most in our community do.

Sincerely, Jennifer Hannan-Merrett & Irene O'Duffy

An afternoon of Literature and Discussion

– 5 Authors, 1 Topic. 2-5pm Sunday 18th November

The Macedon Ranges Book Club, and Lancefield and Romsey Community Banks proudly announce an exciting fundraising afternoon at the Romsey Community Hub. A passionate discussion by 5 prominent authors on 'Why Read'.

Local authors – Paul Carter (Hale and Hardy), Michael Meehan (Deception, and Salt of Broken Tears), and Amy Choi (Playing House), join Courtney Collins (The Burial) and Shane Jesse Christmass (Croak and Grist) who will each give their interpretation on why we all should read, followed by a gourmet afternoon tea and panel discussion. Tickets available online for only \$15. www.webticketing.com.au No door sales.

Book sales and signings by these fabulous authors will be available before and after the event.

All proceeds go towards reading services for the aged in the Macedon Ranges Shire.

Proudly supported by Procure Support Services, Curly Flat Winery and Red Doors Books of Lancefield.

Submitted by Kate Christie

Be fire ready for summer at the CFA Bushfire & Emergency Services Expo

Residents from the Macedon Ranges and beyond are encouraged to be fire ready for this summer by attending the CFA Bushfire & Emergency Services Expo, the one-stop shop for bushfire information and advice.

The expo, on Sunday 25th of November from 10am to 3.00pm, will take place at the Riddells Creek Fire Station, Main Road, Riddells Creek. It will be an opportunity to pick up bushfire planning advice from CFA and DSE, attend a range of bushfire safety information seminars and chat to the agencies involved in bushfire preparation and recovery. A number of businesses will also be on hand to demonstrate their range of products that could be used to either prepare or defend your home against bushfire.

Event organizer, Riddells Creek Fire Brigade member Alex Batty, said the event was the ideal forum to learn about bushfire preparation and survival. "Having all the agencies and exhibitors in the one space allows people to ask as many questions as possible, which hopefully goes some way to informing their bushfire survival plans and decision-making on high risk fire days," he said.

People who would like more information about the expo are encouraged to visit the event website at www.riddellcfa.com.

Submitted by Dean Anderson, Community Safety Manager, Riddells Creek Fire Brigade

Interested in promoting your business with a profile in The New Woodend Star? Contact Alexia - sales@collieroffice.com.au

Ramai Skin & Body Care

Ramai Skin & Body has recently launched in Woodend, offering the Macedon Ranges community and visitors to the area an unparalleled beauty experience.


Samantha Moore is the brains behind Ramai and promises her clients exceptional service at affordable rates. With services including waxing, manicures, pedicures and spray tans as well as Sam's luxurious massage and facials, Ramai really is your one stop shop for all your beauty needs.

Sam is extremely passionate about creating an experience for her clients. Her treatments are designed to awaken and invigorate all the senses and are tailor made for each individual client. Whether you visit Ramai for a massage, an eyebrow tint or anything in between, you will always leave feeling relaxed and pampered.

Sam also cares deeply for the environment and sources the highest quality products that are recyclable and do not contain any harsh chemicals. Not only will the planet thank you for choosing Ramai but your skin will too.

Ramai is open 7 days a week with extended hours to cater for the busiest people so don't wait any longer. Spoil yourself and call Sam at Ramai to book your next beauty treatment.

Submitted by Wise Words Copywriting



WOODEND JUNIOR FOOTBALL CLUB INC.
We are the Mighty Flying Hawks

WOODEND JUNIOR FOOTBALL CLUB

Expressions of interest invited
Coaches for season 2013

Age Groups:
Under 9's, Under 10's,
Under 12's, Under 14's &
Under 16's

Applications in writing can be submitted to:
John Nicholls
President, Woodend Junior Football Club
president@woodendhawks.com.au

Kylie Barton
Secretary, Woodend Junior Football Club
secretary@woodendhawks.com.au

Applications close
Friday 9th November 2012



SPRAY TAN
WAXING / TINTING
FACIALS
PEDICURES & MANICURES
MASSAGE

Samantha Moore
0438062143
www.facebook.com/RamaiSkinBodyCare



"for all your water needs"

The Water Bloke Specialises in

- Rainwater Tank Installations
- Tank To Toilet connections
- Grey Water Recycling

We're based in Woodend, so call us for a free consultation and Water Audit of your home.

Contact Craig on 0410 275 714
thewaterbloke@gmail.com

WARNER'S JEWELLERS

EST. 1912 ~ 4th Generation Jewellers

Manufacturing Jewellers

Jewellery Repairs

Watch & Clock Repairs

Valuations & Rethreading

97 High Street, Woodend

5427 1573

Advertisers can receive a 10% discount when pre-paying for 11 editions.



Custom picture, artwork, tapestry and memorabilia framing, professionally and economically performed in-house

A comprehensive range of Art supplies at very competitive prices

- Pencil & paint by numbers sets for youngsters
- Artist's quality brush and paint sets for the more experienced
- Matt boards and mounts for artwork presentation
- Books & magazines for the art enthusiast, or those just wanting a good read

43 Anslow Street, Woodend – 5427 4455
Next to the post boxes
feelingframed@bigpond.com

Tongues

The king made a banquet and ordered his clever slave to serve the best food that money could buy. The main food at the meal was tongue... all kinds of tongue cooked in all kinds of ways. All the side dishes and even dessert were also tongue... When the king objected, the slave said: "My Lord, what excels the tongue? It is the channel of wisdom and learning. By it we make speeches and carry out business. By it great personas are made known. With our tongue we speak even to God. King, there is nothing equal to the tongue." The king and all the guests were astounded to hear all this wit and wisdom come from the slave. The next day the king threw another banquet. The same guests came back. This time the king ordered the slave to serve the worst kind of meat he could find. Again, he served tongue - and only tongue. When the king began to scold the slave over this, he answered: "My Lord, can there be anything worse than the tongue? Treasons, deaths, violence, injustices, fraud, murder, wars - all are debated and decided by the tongue. The tongue ruins empires and countries, peoples and families. What is worse than the tongue?"

The bible says in the Book of James: *And so blessing and cursing come pouring out of the same mouth. Surely, my brothers and sisters, this is not right! For if we could control our tongues, we would be perfect and could also control ourselves in every other way. And those who are peacemakers will plant seeds of peace and reap a harvest of righteousness.*

What sort of a harvest are you planting with your tongue?

You choose!

If you would like to know more about how Jesus can help you control your tongue please contact the Encourage Church Office on 5429 6327. We would be happy to assist you in reaping a New Harvest in Life.

You are also invited to join us at one of our Sunday Services or one of our fortnightly Life Groups.

We also offer Before & After School care; Fortnightly Youth events and weekly Children's programs.

Submitted by Pastor Marilyn Hunter - "Encourage Church"

lawyers & business consultants

lawyers

noy

l e g a l
s e r v i c e s

- business sales + leases
- conveyancing
- wills + estates
- commercial agreements

5426 3500 • justine@noy.com.au

macedon ranges & melbourne



Microsoft Scam callers targeting Woodend

Following reports from numerous locals having received calls from imposters posing as Microsoft employees offering to fix PC viruses. It's a timely reminder for all residents to be vigilant. Here's some facts from Australian Competition & Consumer Commission's Scamwatch:

If you receive a call out of the blue from a stranger requesting access to your computer, money or your personal details, just hang up.

How these scams work

You receive a call out of the blue from someone claiming to be from (or have a relationship with) Windows or Microsoft and that they have detected a virus on your computer.

To confirm the diagnosis, the caller asks you to open Windows Event Viewer on your machine to check if it is infected. Several error messages are listed and this reinforces their claims, even though errors are common and usually harmless. The caller tells you that these are of significant concern and offers to refer you to a 'technician' who could fix the problem—for a fee.

At this point, you're offered a number of solutions that seem to make perfect sense. Depending on the intent of the particular scammer involved, the 'technician' might:

- Install an antivirus program on your computer—typically the kind that you can download for free from reputable companies—and charge up to \$250 for the service.
- Ask for your credit card details but install nothing. Your details might then be sold to other parties or used for fraudulent purposes.
- Install malware on your computer—this enables your computer to be controlled remotely for other illegal and harmful activities.
- Access and steal personal and financial details from your computer.

Follow-up scam

Scammers have also been known to make follow-up calls to people who initially fell victim to the scam. In these calls the scammer falsely claims to be from a foreign government, foreign law enforcement body, or from your bank, and offers to recover the money that you initially lost—in return for a fee.

Protect yourself

If you receive a phone call out of the blue about your computer system's security status and requesting remote access - hang up - even if they mention a well-known

company or product. NEVER give an unsolicited caller remote access to your computer.

If you have given remote access to your computer, or you fear that your computer has been hacked, seek out help or advice from a qualified and reputable computer technician.

Do not give out your personal, credit card or online account details over the phone unless you made the call and the phone number came from a trusted source.

Make sure your computer is protected with regularly updated anti-virus and anti-spyware software, and a good firewall - but research first and only purchase the software from a source that you know and trust.

If you have fallen victim to a scam or you receive a lot of unsolicited emails and phone calls consider changing your email address and phone numbers.

If you think you have provided your account details to a scammer, contact your bank or financial institution immediately.

You can report a scam to the ACCC via the report a scam page on SCAMwatch or by calling 1300 795 995.

Submitted by The New Woodend Star



WOODEND COMPUTER SERVICE

Sales - Service - Training & Help

THE BANK - 75 HIGH ST WOODEND
JASON JOHNSON - 0400528129
pcs@live.com.au




24sevenalarms.com.au

24 Seven Alarms Aust Pty Ltd

- Alarms installed, Serviced and Monitored
- Data cabling and phone line installation
- Medical Alert Systems
- Access Control Systems PSBL: 732-083-90s
- Digital Video Surveillance CCTV packages: domestic and commercial

1800 247 111/ 03 5427 4411
sales@24sevenalarms.com.au



FAIRHURST CONVEYANCING

and Secretarial Services

For all your
Property Transfers
Ring Sue Fairhurst on
5427 2382
27 Urquhart Street, Woodend
MVCA & AIC

Mark Brown

30 years experience

- Muscle realign & stretch techniques
- Gentle spine adjustments
- Elbows, wrists, kness, shoulders
- Headaches, migraines & athsma

Upstairs at Westpac Bank, 75 High St

Phone: 0407 526 403

Welcome to the Woodend Star

Kids Club November Birthdays

2nd	Harry Fox	Turns	7
3rd	Bailey Thorne	Turns	8
3rd	Jordan Crook	Turns	7
4th	Elizabeth Brand	Turns	11
6th	Alice Meacham	Turns	11
7th	Alex Plant	Turns	7
9th	Jacob Lamb	Turns	11
9th	Bradley Hennekam	Turns	5
10th	Alice McKinnon	Turns	12
14th	Allan Johnson Molina	Turns	8
20th	Keira Lupson	Turns	11
21st	Jemparra Hickie	Turns	6
22nd	Aden Cooper	Turns	10
25th	Bryson Gilbert	Turns	10
26th	Juliette Johnson Molina	Turns	5
27th	Jamieson Muir	Turns	11
29th	Emily Davidson	Turns	12

Happy Birthday Everyone!

JOIN THE WOODEND STAR KIDS CLUB

Fill in your details below and mail to P.O. Box 387 Woodend
Age limit is 13 years old. Must be a resident of the 3442 postcode

Full name: _____

Address: _____

Date of Birth: _____ Age: _____

Phone: _____

Parent/Guardian

Signature: _____

Sponsored by:



Shop 5, 130 High St, Woodend. P: 5427 3209 e: sales@collieroffice.com.au

**You can collect your birthday surprise by
visiting Collier Office & Business Assist**

Malmsbury Village Fayre

Sunday 18th November, 2012 at Malmsbury Botanic
Gardens, Calder Highway, Malmsbury from 10:30am to
4.00pm.

The Fayre is a wonderful chance to taste the wines, produce
and foods of the region or take in a tour of the beautiful &
historic Malmsbury Botanic Gardens. Sample the delicacies
available from the multicultural food stalls or buy some tasty
local produce and enjoy a picnic lunch in the gardens in
spring. - A great family day out

Submitted by Sandra Aitken

Lancefield / Macedon Ranges Relay for Life

Understanding the impact of cancer on our communities
Cancer is a leading cause of disease burden in Victoria with
78 new diagnoses and 29 deaths from cancer every day. A
total of 28,363 Victorians were diagnosed and 10,673 died
from cancer in 2010.

An estimate of the effect of a disease on the community
is the "years of potential life lost" (YPLL). This measures the
loss of life due to a disease up to an arbitrary life expectancy
of 75 years.

In 2010, persons dying of cancer in Victoria lost an
estimated 62,000 years of potential life. This is more than
four times the YPLL from other major causes of death, such
as ischaemic heart disease, stroke and chronic respiratory
disease.

Though cancer incidence rates continue to increase
(annual % increases of 0.9% for men and 0.6% for
women), death rates have declined steadily since 1982
with average falls of 1.4% per year for males and 1.1%
for females. This reflects earlier detection through
screening, falling tobacco-related cancer rates for males and
improvements in treatment and outcome.

It is estimated that by 2013 the annual incidence of
cancer will reach almost 32,000, an increase of 16% from
2010. During the same period, deaths from cancer will
increase to around 11,000 per year. Though actual numbers
of new cases and deaths are increasing rapidly, this is largely

continued on page 30

AVAILABLE FOR LEASE IN WOODEND

NEW SHOP SPACE



AVAILABLE IN 19TH HOLE SHOPPING CENTRE EARLY 2013

- SHOP 1 90 sq m
- SHOP 2 214 sq m

SHOP & OFFICE SPACE AVAILABLE NOW

- SHOP 169 sq m
- OFFICE 8 14 sq m
- OFFICE 10 33 sq m

CONTACT IVOR JOHNSON
Phone 5427 4089 or 0407 273 961
75 HIGH ST WOODEND

continued from page 29

due to the growth and ageing of the Victorian population.

The latest report on cancer from the Australian Institute of Health and Welfare shows the five-year survival rate from all cancers increased from 47 per cent to 66 per cent from 1987 to 2010.

However the improvement was mixed for individual cancers.

The cancers that had the largest survival gains over time were prostate cancer, kidney cancer and non-Hodgkin lymphoma.

Over this period there was no appreciable improvement in five-year survival rates for those with mesothelioma, pancreatic cancer and lung cancer.

Women recorded higher survival rates after a cancer diagnosis than men at 67 per cent, compared to 65 per cent.

The Cancer Council

The Cancer Council of Victoria has been leading the fight against cancer for over 70 years. It provides a range of support services for cancer sufferers and their families, funds and conducts research into cancer and has an active public advocacy program directed at reducing the risk and incidence of cancer. For more detailed information about the activities of the Cancer Council go to www.cancervic.org.au



Who will you Relay for?
www.relayforlife.org.au
1300 65 65 85

Relay For Life

Here in the Macedon Ranges the Relay For Life held each year at Lancefield Park works to raise funds to support the work of the Cancer Council. During the last 10 years this Relay has raised over \$960,000. As an event the Relay acknowledges and celebrates the lives of those who are living with cancer, remembers those we have lost to cancer and commits to fighting back against cancer by raising funds to be used by the Cancer Council in combating cancer.

The next Lancefield Macedon Ranges Relay For Life is on 2nd and 3rd March 2013. To find out more about Relay For Life and to register a team go to www.relayforlife.org.au

Submitted by Ken Wiltshire, ChairManager Lancefield Macedon Ranges Relay For Life(ph 54296420 after hours)

Family Heritage Walk

The 2013 Dedication Ceremony for Plaques and Trees in the Woodend & District Heritage Society, Family Heritage Walk will be held on Sunday 10th March. If you are not familiar with The Walk, take a stroll down the path from the rear of the Old Court House to the Five Mile Creek, then along towards the Bluestone Bridge, where there are now 70 dedicated Plaques and Trees. Information Kits can be picked up at the Old Court House in Forest St on Wednesdays, or phone Rosemary on 54271893. Applications close mid November.

Submitted by Rosmary Wilkinson

ARE YOU A PRIMARY PRODUCER?

Primary producers are those entities that cultivate or propagate plant materials and/or maintain animals for purpose of selling them or their bodily produce.

Concessions available to primary producers include:

- Automatic access to non commercial losses by an individual when assessable income from other sources is less than \$40,000
- Deferral of taxable income through the use of Farm Management Deposits
- Ability to average Primary Production Income over 5 years to allow for taxable income fluctuations
- Ability to vary the valuation method for stock
- Primary Production Land can be acquired in a Self Managed Superannuation Fund
- Small Business Capital Gains concessions upon disposal of active Primary Production land
- Goods & Services Tax exemption available upon sale of farm land if used in farming business for at least 5 years prior to the sale and the buyer intends to use the land as a farming business
- Access to deductions for Landcare operations
- Three year write off for water facility expenditure
- Access to applicable government grants
- Stamp Duty "family farm" exemption upon generational succession

If you are a primary producer or would like to discuss the above please contact Andrew Marshall or Janine Orpwood on 5427 3790 (85 High Street, Woodend) for an initial consultation.

Langley|McKimmie

Chartered Accountants

www.langleymckimmie.com.au E: info@lmadvisors.com.au

CENTRAL VICTORIAN TIMBER

- Sleepers •
 - Treated Pine •
 - Posts •
 - Hardwood •
 - Plaster •
 - Doors •
 - Redgum Firewood •
- Specialists in house lots and extensions

Phone: 5427 1090

Email centralvictimber@bigpond.com

Monday to Friday 8am - 5pm Saturday 9am-12pm

**988 Blackforest Drive Woodend
(Old Sawmill Site)**

Tylden Primary School's

Wonderful New Classroom Kitchen

Tylden PS is very pleased and proud to announce the opening of their brand new classroom kitchen. "It's really good." "It's up to date." "We love cooking!" were a few of the students' comments after their very first pizza-making lesson. "I especially like the dishwasher as I don't like washing dishes," grinned Estelle in Year 6. The teachers will use the multi-unit kitchen to teach cooking of course as well as holding community events and science lessons too.

The addition of the classroom kitchen adds yet another extra-curricular activity for our students, one that we're sure will be educational and lots of fun.

Academic News

The students at Tylden Primary have been learning about Ancient Olympic games, architecture, way of life and inventions. They learnt that some inventions are still being used today even though it's thousands of years later. The students designed some great art work. They designed plates inspired by the beautiful Ancient Greek and Roman amphora (jugs) and floor mosaics. The students also made full size togas and constructed sandals they could wear as well as pencil holders, bean mosaics and wax writing tools. All these artworks are on display in the Gallery at Tylden Primary School.



Submitted by M. Corcoran

A Free Sample of Fabulous ADFAS

The Australian Decorative & Fine Arts Society, much more easily referred to as ADFAS, is drawing the 2012 season to a close. It has been a fabulous year of lectures and excursions, including a Grand Day Out to the Archibald Exhibition at TarraWarra and an exclusive tour of the penthouse suites in the Melbourne Art Series Hotels.



Dr Susan Lowish and Henry von Bibra enjoying discussions at earlier ADFAS meeting

The excitement is set to continue in 2013 with an equally fabulous range of arts-based activities already planned. But every wise owl knows that you shouldn't believe everything you read in the newspapers, and so you are warmly invited to come along and see for yourself. The final event of the ADFAS year is on November 8th in the Kyneton Mechanics Institute at 7.30pm. John O'Donnell is a local musician with an international reputation, and he will entertain his audience with a talk entitled 'Games Composers Play'.

A light supper of sandwiches and wine will be served afterwards, which is a great opportunity to meet new friends and to find out what the society is all about. Come along as our guest, and the usual fee of \$20 will be waived for everyone who takes out an ADFAS subscription for 2013. ADFAS is not a secret society, even though you may never have heard of it. It is open, welcoming and friendly and offers its members the best value around town. See you on the 8th November!

For more info contact Caroline: 0424 668 053.

Submitted by C Boehm

The fencin' fella

- colorbond
- tubular
- timber
- steel picket
- pool

Mini Earthmoving Kanga Loaders

Attachments include:
rotary hoe, soil leveling bar,
4 in 1 bucket, trenchers,
post hole diggers, tipper

SHAUN BARRON

MOB: 0407 232 900 or 5422 3488 AH

Quality Blinds at factory direct prices

- Sunscreen/Blockout Blind
- Latest Styles/Fabrics/Colours
- Automated Blinds
- Roller/Roman Blinds/Venetians
- Exterior Awnings
- Professional Installation Team

Ring Now for a **Free** In House Consultation/Quotation

Mark 0437 759013

Simon 0458 338995

Contemporary Blinds
Where Style is Affordable



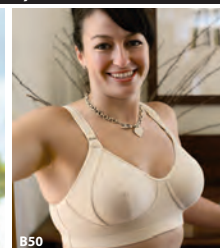
bodywise
UNDERWEAR

www.bodywise.com.au
1300 66 17 66
Shop 19, 130 High St, Woodend

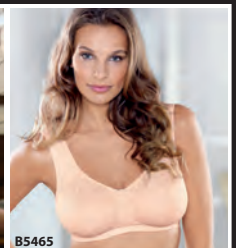
Wire-free bras, briefs & more... sizes 10 to 30



B5529



B50



B5465

• wire-free • everyday comfort • all ages • maternity • sports • wardrobe basics •


All news items, articles and community news columns must be received by 15th of each month.

Bradley's Curtains & Blinds Showroom Open Day Celebrating 40 Years in Woodend



[www.facebook.com/
BradleysCurtainsBlinds](http://www.facebook.com/BradleysCurtainsBlinds)

When we opened in Woodend in 1972, we gave away a Dragster bicycle. To celebrate our 40th anniversary and with our exciting new showroom, we are giving another cool Dragster away !!

For your chance to Win, all you have to do is  Like our Facebook page.

The Lucky winner will be randomly selected on our showroom opening day.

Sausage sizzle, gold coin donation with all proceeds going to Very Special Kids, Glen Osmond Farm.

Saturday 10th November 10-1

We would love everyone to join us- have a look and a snag!

Bradley's Curtains + Blinds PTY LTD

72 High Street, Woodend, 3442
abn 95 158 839 653

t 03 5427 2361
f 03 5427 1019
e sales@bradleyscurtains.com
w bradleyscurtains.com



WOODEND NURSERY

"LOCAL KNOWLEDGE FOR LOCAL CONDITIONS"

36 URQUHART ST, WOODEND

5427 1866

Full range of plants, seedlings
& gardening accessories
open 7 days



Top Hat Productions

- * 8 mm / 16 mm Film to DVD
- * VHS/Mini DV/ Hi 8 to DVD
- * Filming/Editing Services
- * Corporate & Special Events Productions

AVPA Multi -Award Winners
Accredited Producers



PH: 03 5422 3930

NURSERY ROAD

GARDEN SUPPLIES

Sand | Soil | Mulch | Pots | Plants

Water features | Fire wood

Hire Equipment | Synthetic turf

Sleepers | Wine barrels | Pavers

42 Nursery Road Macedon 3440 Victoria | Email hello@nrgsupplies.com.au
Telephone 03 5426 2400 | Facsimile 03 5426 4972
General open hours Monday-Friday 7:30-5pm, Saturday-Sunday 9-5pm
Arrangements outside these hours can be made.

Cancer and Natural Therapy Foundation

– *What's on in November, 2012*

The Cancer and Natural Therapy Foundation is a non-profit, registered charity organisation aimed at assisting people in accessing information and resources in the area of natural therapies and expanding health care options. To enable them to make informed choices. The Foundation provides the following services and resources: information and referral, resource library, professional counselling, guest speaker program, support groups, reiki healing, ifas treatment, ear candling, quarterly newsletter, self help workshops and educational films.

Weekly Support Groups:

- Health Awareness Support Group

Offering meditation, reiki healing and general discussion on natural therapies and preventative medicine. Tuesdays 7.30-9.30pm.

- Self Empowerment and Healing Support Group.

For "confidence building" and "positive living". Thursdays 10-11.30am.

Health Workshop

- Reiki 1 Workshop. Facilitated by Clive Rees, Reiki Master. Sunday 25 November, 9am-5pm. Cost: \$95 members, \$100 Concession and \$125 non members. Workshop Manual \$15. (Includes Lunch and refreshments).

Held at Neighbourhood House and Community Centre, Elizabeth Drive, Sunbury. Phone: 9740 3977 (Mon/Wed/Fri) or Sandra on 0411 100 947.

Website: www.cancernaturaltherapyfoundation.org

All welcome!

Submitted by Sue de Jonge, Cancer and Natural Therapy Foundation

ON TIME!!!

Tired of being late for your appointments?

Sun-Ranges Hire Cars

can look after all your travel needs, with Prompt & Personal door to door service for less than you think

Airport Transfers – Business & Corporate Travel – Weddings & Special Occasions – Sporting Events – Theatre Nights

Phone 0468 347742

0402 228 286

Pacifique Vue Vanuatu

Luxury Accommodation
www.pacifiquevue.com
Ocean front + FREE rental car

Heritage News

Anyone for quoits?

The following article from the Kyneton Guardian 8th October 1887 caught my eye and set me wondering. Is quoits still being played? Mentioning this to one of the volunteers he remarked that by coincidence, he had also just read an article that noted that the London and Liverpool Hotel was about to put in a new quoit ground – the date, 21st July 1886. Interesting! Had a quoit craze suddenly hit Woodend?

The article he had found recorded that “H.D. McKenzie of the London and Liverpool Hotel has provided a fresh amusement at his hotel by forming a quoit ground at the back of his garden, where lovers of the game can enjoy an afternoon’s play.”

Incidentally, for newcomers, the London and Liverpool Hotel was also known as McKenzie’s and once the golf course was established, ‘The Nineteenth Hole’. Now all that remains is the Nineteenth Hole Shopping Centre as the hotel which stood there so proudly for many years and catered to scores of visitors to the district was destroyed by fire in April 1960.

But back to quoits: The October 1887 article which had first caught my attention reported that, “On Tuesday last a scratch quoits match took place at the Farmers Arms Hotel. There was also a party attended by about 40 or 50 ladies and gentlemen including the beauty and musical talent of the neighbourhood. The ladies did the most and best portion of the singing. Mrs James Evans sang Kathleen Mavourneen as she can sing it. (sic). Mr. M. Shannon sang Beautiful Isle of the Sea in grand style. Miss J. Gagiero sang Killarney very sweetly accompanied by her sister. Mr. George Coop gave his well known, favourite recitation, The Favourite Wins. Mr Summers recited Shield’s Reply to Lord Lyndhurst. An adjournment then took place to the ballroom where Messrs R. Bradley and J. Kenny applied the motive power on the violin. Songs and dances succeeded each other. Mr. M.J. O’Brien sang The Meeting of the Waters, accompanied in very good taste by Miss Nellie Daniel. The irrepressible James Evans was one of the leading spirits of the evening. The entertainment was in honour of the birthday of Miss Helena O’Brien, the heroine of the evening.” The article then continued – my favourite part: “On Wednesday a quoits match took place between Woodend and Kyneton. Owing to several of the players having been guests at the Farmer’s Arms on the previous evening, some of the best men on the Woodend side saw two pegs where others only one, and the team was knocked into a cocked hat.”

Submitted by Janet Hawkins.

Space is still available to advertise in the Trades & services section. Prices start at \$38 per edition. Call Alexia 5427 3092 for further information.



Now is the time to start reducing the risk of fire!

The Fire Restriction period is not far away.

In recent years, we have experienced several relatively mild summers, and this year predictions are that it will be similar. In fact, following heavy winter rains and strong spring growth, this year promises to be another dangerous grass fire season. And, NOW is the time to start preparing to reduce the risks of fire danger to you, your family and your property.

Be careful burning off – even a small fire

For small clearing fires, a permit is not needed, however there are still strict guidelines you should be aware of. If a burn escapes due to carelessness and damages someone else’s property, you will be held responsible.

By law the size of pile of material being burned must not exceed 2 cubic metres at any time, and you are meant to have cleared a firebreak of at least 3 metres around a fire, to ensure that the fire can be restricted to a controllable size. The space above the fire should also be free of any flammable material and vegetation.

You should not burn too close to adjoining land. Do the courteous thing and notify neighbours prior to the fire being lit, so that they can bring in washing and close doors and windows. If they are surprised by sudden smoke they may also unnecessarily call the CFA.

Naturally, what you burn should be dry garden waste and not produce any toxic fumes. You will need to have adequate methods of controlling and extinguishing the fire in place. And you shouldn’t just set fire to a large pile and let it burn.

For further information contact Captain Mick Christie on 0419 870 601 or 1st Lieutenant Mike Dornau on 0409 093 935. On Sundays call the Woodend CFA on 5427 2356 or visit the station in Urquhart Street . Or you can visit our website: www.woodendcfa.org.

Submitted by 1st Lieutenant Mike Dornau, Woodend CFA

DON’T FORGET!

**Emergency Service Expo at Riddles Creek
on November 25th**

PAINTING

Painting & decorating
Residential & commercial
Rendering
Prompt & professional

Rigoni Painting
Phone 0430 371 001



PLUMBING

Col Hanna
PLUMBING

*General Plumbing
*Maintenance & Renovations


**HIGH PRESSURE
DRAIN CLEANER**

P: 0407 301 138
colhanna71@hotmail.com



TRADE & SERVICE DIRECTORY


CLEANING



Not enough hours in your day?
Need help managing
your home?

Stephen Farrell
Personal Services

Very reasonable rates
Through out the Macedon Ranges
Phone: 0419 526 275



CARPENTRY



Euro-Style
Carpentry Service
Hans Van Den Hengel
Carpenter

Serving the Macedon Ranges

0432 388 400

DRESSMAKER



Beryl's Tailoring
DRESSMAKING, ALTERATIONS,
BRIDAL, EVENING & DAY WEAR,
LADIES AND MEN'S REPAIRS

Beryl Bachelor
QUALIFIED DRESSMAKER, NEWHAM
By APPOINTMENT ONLY
MON TO FRI 9 - 5

5427 0568 0418 510 179
berylb@vic.chariot.net.au

FENCING & GATES

Fencing & Gates

- colourbond
- timber
- picket steel & timber
- period style fencing
- all types of gates
- retaining walls

ph: 0419 005 185 5427 1192

GARDEN MAINTENANCE



Hyland Brothers
Property Maintenance & Services

- Mowing (includes ride-on)
- Edging, Pruning & Trimming
- Clean-up & Rubbish Removal
- Handyman Work/Odd Jobs
- Weeding & Mulching
- Servicing Macedon Ranges

Need a quote? "Ask the Hyland Brothers"

Col 0428 271 935 - Tex 0422 138 368
or 5427 1044

HANDY MAN

HANDYMAN SERVICE

Servicing the Macedon Ranges
Honest Reliable Friendly & Local

Phone **PETER**
0431 252 477 or 5423 5282

Minor repairs	Dripping Taps
Basic Carpentry	Tiling
Fence repairs	Paving
Gardening	Painting
Mowing	Odd Jobs



HOME INTERIORS

DECORATE
with style
RENOVATE
TRANSFORM
with confidence



Present Well
HOME INTERIORS

Call Danielle 0400 664 231 pwhi.com.au

HOME MAINTENANCE

Home maintenance & landscaping
service including decking,
pergolas, carpentry & painting.

Stuart 0409 150 629
AH 5427 2465

MASSAGE

Massage on High

- Remedial • Relaxation • Pregnancy •
- Lymphatic drainage • Cupping •
- Thai foot massage

All massages are charged at \$1 per min plus \$5
• gift vouchers available •
members of AAMT

Mon to Fri 9am to 8pm Sat & Sun 10am to 5pm
30 High St Kyneton 3444 5422 2511

METAL GATES



BVM METALCRAFT
Ben McKee
OLDWORLD & MODERN STYLE
GATES & FENCING
bvmmetalcraft@hotmail.com
04 222 88 768

PAINTING



Aardvark Painting
ABN: 49 178 405 936

- All Painting Works
- Associated Repairs
- Discounts Available
- Call for a Free Quote

0488 094 186 / 0488 095 186
Email: staff@apainting.com.au
Internet: <http://www.apainting.com.au>

PAINTING



GEE'S
Painting etc.

Call Steven
0402 079 482

STONELAYING & PAVING




Stonemason & Paver
specialising in

- Retaining Walls
- Drystone Walls
- Stone Houses
- Paving
- Over 20 years' experience

Cameron Dunn
P 5427 4778
M 0429 162 589

www.cdunnstone.com.au

TAXI



Bookings: 9310 5422

CROWN CABS
Your Local Taxi Service

To go in a monthly draw for a \$20 voucher
to spend next time you ride with Crown Cabs,
Send this advert to:
P.O. Box 25 Tullamarine, 3043.

TREE SERVICES



- tree pruning / removal • stump removal
- tree planting / transplanting • rope & harness climbing
- confined space removal • fully insured

Professional commercial & residential tree maintenance
all work carried out by qualified arborist

Call Anthony **0417 059 969**

SERVICE, REPAIR & ACCESSORIES FOR ALL CARS

MACEDON RANGES

4x4



Driving lights



Communications

CHRISTMAS GIFT VOUCHERS AVAILABLE

YOUR 4X4 EXPERTS

7 LIGAR ST WOODEND

5427 4468