

THE NEW WOODEND STAR

Circulation of 3500 throughout

Woodend postal district, Newham, Hesket, Ashbourne,
North Woodend, Hanging Rock, Carlsruhe, Cobaw.



AN INITIATIVE OF THE ROTARY CLUB OF WOODEND

September 2013

A Monthly Community Periodical

First Published 1997

Volume Seventeen No 8



RESONANCE STRING ORCHESTRA

On September 15th at 3pm Resonance String Orchestra will conclude their year long "Back to Baroque" project with a public concert at Sacred Heart College, Kyneton (Mary Maloney Theatre).

Resonance String Orchestra is a regional community orchestra, it provides outstanding music education and experience to students of intermediate to advanced level.

The orchestra currently has 30 members, comprising students from fifteen different schools around the region, as well as tertiary and adult string students.



courtesy Kim Selby Photography

One of the notable features of the orchestra is its outstanding 'visiting artist' program which has involved high-calibre professional musicians who conduct workshops with the Resonance students.

Anna Webb made the following observations:

"The enthusiasm and responsiveness of the Orchestra and the caring professionalism of its tutors were remarkable. The orchestra and its links to the world of professional music-making provide a rare and genuinely high-quality artistic and educational experience for young people in regional Victoria."

President of Resonance String Orchestra Heather Cummins observes: "The artists employed through this scheme provide our students with access to models and expectations of excellence... We help them grow not only as skilled and musical performers, but as informed and engaged listeners.."

Throughout 2013, the Resonance String Orchestra has been focusing on the Baroque era, in particular looking at the Baroque Concerto form and its relationship between soloists and orchestra.

This project has provided members of the orchestra with an opportunity to examine, listen and learn about period instruments as played by baroque specialists. Orchestra members have had a unique opportunity to study style specific elements, such as bowing articulation, ornamentation, orchestration and musical form.



Back by popular demand

The Cantorion Cymreig Victoria Welsh Choir has performed at the Royal Albert Hall in London, they have toured overseas several times, performed on both BBC and ABC radio and now they are bringing their unique sound to perform in the Macedon Ranges.

Single Performance in Woodend

This special performance, to support the Woodend CFA, will include a choir of more than 50 wonderful voices.

The entertaining 2 hour show can include Welsh hymns, folk and traditional songs from around the world, spirituals, classical songs and opera choruses, and songs from 'the Shows', with informative introductions to each item. There will also be local support acts featuring internationally renowned Huw Jones on harp.

For more information and bookings call CFA member, and former choir member, Keith Beman on 5427 1463.

Held at St Ambrose Church, Templeton Street, Woodend on Sunday September 8 at 2pm. Tickets are \$30 per person (including light refreshments), \$25 for pensioners and CFA members. Credit Cards Accepted
A world class choir

Formed in 1980, the Cantorion Cymreig Victoria Welsh Choir is a traditional Welsh male voice choir singing in four-part harmony, with some of the repertoire sung in Welsh ... 'the language of heaven'. They toured Wales in 1995, and again in 1999 when they became the first Australian Welsh male choir to compete in the Welsh National Eisteddfod. In 2004, they again made history by winning 3rd prize at Newport.

You can find out more information about this wonderful group by visiting the website: www.vicwelsh.asn.au – the site also includes several songs performed by the choir.

Proceeds to support the Woodend CFA

Submitted by Mike Dornau

continued on page 2

Attention businesses, trades and services

Christmas is coming and its time to book your place in The New Woodend Star annual Christmas feature. It's a great way to thank your customers for their support or to advise if your taking a break over the holiday period.

Regularly a sell out, this Christmas feature also acts as a fund-raiser for Woodend's Rotary Club so it's a wise way to spread your advertising costs at Christmas.

Email Alexia sales@collieroffice.com.au to secure your space.

continued from page 1

Resonance String Choir

The culmination of this year-long project is the annual concert which will take place on Sunday September 15th at 3 pm at Sacred Heart College, Kyneton (Mary Maloney Theatre)

The program will feature pieces from the Baroque era including Corelli's Christmas Concerto, Handel's Water Music and Bach's Brandenburg Concerto no. 3 which will be played by the orchestra's tutors and visiting artists.

All of the visiting artists will return to play in this final concert on 15th September, both in solo performances and with the whole orchestra. A highlight of the concert will be Vivaldi's double violin and double cello concertos - to be performed by a Senior Resonance orchestra member and the visiting artists.

The visiting musicians will perform on period instruments throughout the concert and many of the Resonance players will perform using baroque bows purchased for the orchestra with the assistance of funding from Arts Victoria.

Residents of the Macedon Ranges, students and lovers of music, friends and supporters are all warmly invited to attend on September 15th to share in the musical accomplishments of some very committed musicians of this region.

All ticketing enquiries can be made through the Trybooking website: www.trybooking.com/DFDF

For concert queries contact: Heather Cummins 5427 3581

"Resonance String Orchestra's 'Back to Baroque' Project is supported by the Victorian Government through Arts Victoria."

Submitted by Nicole Spicer

The New Woodend Star

An initiative of the Rotary Club of Woodend Inc.
The Bank, 75 High Street, Woodend, Vic. 3442
ABN 32 685 225 161 No. A0021518E

Layout & printing by Collier Office & Business Assist
EMAIL articles preferred: sales@collieroffice.com.au

Circulation: 3500 copies throughout Woodend and district

Disclaimer: Articles and comments published in this newspaper are the result of contributions from local groups and relevant news articles pertinent to the Woodend district. Neither the Rotary Club of Woodend Inc., The New Woodend Star nor the editorial team are liable for any mistakes, omissions, or misprints. It prints and makes no representation as to the truth or accuracy of any description, and accepts no liability for any loss suffered by any person who relies on any statement contained herein. Persons or organisations submitting material for publication in the New Woodend Star do so on the condition that the New Woodend Star has the right to reproduce this material in electronic format,

Committee: Barry Napthine, Ivor Johnson, Claudia Green, Brendan Watters, Alexia Downie, Sue Macklin & Jane Watters

Closing date for inclusion of articles or advertising for each issue is the 15th of the month prior to publication

Information for Advertisers

Prices for advertising 2013 only. Rates are not subject to GST

Business card (55mm x 90mm)	\$54
Trade page (60mm x 40mm)	\$40
Quarter page (90mm x 134mm)	\$109
Half page (190mm x 134mm)	\$205
Full page (190mm x 277mm)	\$348
Insert (of your printed brochure).	\$256

Advertisers: please note - it is in your interest to book and pay for a year in advance, as a 10% discount applies to any full year pre-paid booking. Any existing pre-paid ads will revert to the new rate on completion of the pre-paid period.

Advertising bookings to be made with Alexia Downie via sales@collieroffice.com.au or 5427 3092. Accounts queries can be made to Sue on 5427 4089 or nws@johnsonwoodend.com.au Mail should be directed to: New Woodend Star, C/- The Bank, 75 High Street, Woodend 3442.

Woodend Star Publication Dates for 2013

September September 2nd November October 28th
October September 30th December December 2nd

Changes to advertisements, new advertisements or cancellations must all be made by email or in writing. All advertisements will be placed and charged for until notified otherwise.

SUBSCRIBE TO THE NEW WOODEND STAR

Do you live outside the New Woodend Star distribution area? Be sure to receive your copy every month by subscribing. A yearly subscription of 11 issues is just \$36.00. Post to New Woodend Star, C/- The Bank, 75 High Street, Woodend 3442.

Name: _____

Address: _____

Phone: _____ Enclosed: Cheque/Money Order for \$36.00

Is your investment subject to CGT?

If you have an investment it may be subject to Capital Gains Tax (CGT)

The ATO has reminded taxpayers that they should keep all records of purchases or acquisitions of assets that may be subject to CGT, and records relating to their sale or disposal.

Records should show:

- the nature of the act, transaction, event or circumstance;
- how it resulted in a capital gain or capital loss;
- the date it occurred; and
- the parties involved.

The records used to work out the amount of the capital gain or capital loss should also be kept, including:

Receipts (of purchase or transfer; insurance; rates, land tax and stamp duty; maintenance, repairs or modifications); Accounts showing brokerage on shares; Interest details; Records of associated professional services; Records from previous owner (eg for inherited assets); Any market valuations.

Please contact us for further information or assistance with CGT and/or your tax planning and compliance requirements.

Riverwood Group Pty Ltd
Accountants, Advisors & Planners
111 High Street Woodend
2/19 Bourke Street Kilmore
Phone: 5427 8000
www.riverwoodgroup.com.au
Email: admin@riverwoodgroup.com.au



They're Calling On You



Please donate your old mobile phones through our recycling program at Woodend Primary School. A drop off point has been set up at the office of the school.

All the phones donated will be:-

- diverted from landfill.
- lessening the demand for coltan mining by giving the coltan in your old mobile phone a second life.
- helping raise much needed funds to support primate conservation in the Democratic Republic of the Congo (DRC).

In 2008 Zoos Victoria partnered with the Australian Recycling Program (ARP) and the Jane Goodall Institute (JGI) to raise awareness of coltan mining, particularly in the Democratic Republic of Congo. The mining of this metallic ore is destroying the mountain forest habitat of the Eastern Lowland Gorillas and is driving them towards the brink of extinction.

The "They're Calling On You" campaign is the only Australian mobile phone recycling program which raises money to enhance the conservation efforts in the Congo. Half of the funds raised are donated to the JGI to help pay the wages and supply food for the rangers who protect the gorillas. With their loss of habitat the gorillas fall prey to poachers and become bush meat. The remaining funds contribute to Zoos Victoria's gorilla conservation program onsite.

The phones donated will either be refurbished or recycled. Refurbishment provides a coltan coated capacitor within the mobile phone with a second life, which consequently lessens the demand for coltan. Refurbished phones are then re-sold by ARP to disadvantaged communities overseas. Phones that are too old for refurbishment are diverted from landfill and recycled into other products.

Since the program began, over 50,000 phones have been recycled and over \$100,000 has been raised to help gorilla conservation.

Please help us to raise awareness of the impact of coltan mining on the gorilla populations and raise funds to support their protection. **Recycle your old phone today!!**

Submitted by Pam Lenders, Woodend Primary School

Find the New Woodend Star online!
www.newwoodendstar.org.au



Feel sensational
at The Spa

Our team of professional and passionate therapists can assist you with all of your needs...
 With microdermabrasion, IPL, peels, facials, massages, waxing and more, we are open 6 days a week.

The Spa

Beauty Therapy Centre

Gisborne | 3/31 Brantome St Gisborne 3437 | 03 5428 8800
 Woodend | 41 Anslow St Woodend 3442 | 03 5427 3322
www.thespa.com.au

Woodend Rainfall Report 2013						
Each month we add the rainfall details and the year to date total. Our rainfall report shows 2007, 2008, 2009, 2010, 2011 and 2012 comparisons. Please note that your own rainfall readings may not exactly match these.						
	2008	2009	2010	2011	2012	2013
January	17.1	0.08*	54*	227.5	31	3.9
February	22.1	2.5*	71.5*	115.0	133	97.4
March	25.4	42.5*	121*	35	84	53
April	20.4	51*	45	63.5	35.5	20.5
May	43.7	30.5*	39	73.5	54.4	83.2
June	88.7	66.5*	98.5	69	126.8	147.8
July	112.5	76.5*	87.5	82.5	102	101.8
August	52.2	107.5*	148.5	56	113.7	
Sept	42.0*	88.5*	97	98.5	54.6	
Oct	13.0*	46*	154.5	86	39	
Nov	67.2	99*	193	82	31.4	
Dec	96.0*	60*	93	120	21.4	
YTD:	7600.3	670.5	1202.5	1119.5	823.8	471.6mm

Woodend Self Storage

(Vic) Pty Ltd

66 Units
 Full security
 Trailer hire available
 7 day access
 Affordable prices
 Insurance available



For any enquiries please contact:
 Leonie or Dennis Barker 5427 4175 or 0413 869 583
 33 Bowen Street Woodend

Friends of Hanging Rock - Bird Identification Walk

The Friends of Hanging Rock in conjunction with The Woodend Bird Observers' Group will be hosting an Identification Walk at Hanging Rock Reserve on Saturday 21st. September, starting at 9:30 a.m. The walk is open and free to interested members of the general public. Meet at the Hanging Rock Café. Bring your own binoculars and good footwear.

Enquiries to Martin Joiner on 54 270 592.



A Powerful Owl- Just one of the birds you may be lucky enough to spot at Hanging Rock.

Spring Art Show

Don't miss the Woodend Spring Art Show held at the Woodend Railway Station rooms Saturday October 5 and Sunday October 6, from 10 am to 4.00 pm.



The members of the Woodend Art Group (WAG) are preparing for their annual Exhibition. Many local businesses gladly sponsor this local endeavour, giving artists an opportunity to win a substantial prize. The main prize is, the Gordon Cope Williams prize of \$ 250 for the best work of art.

All prizes mention the name of the sponsor, the prizes come in various denominations.

The Woodend Spring Art Show has become well known in the district and people from far and wide come to check it out. The exhibition is open all weekend, and you are asked to contribute by gold coin at the door.

The exhibition will be opened on Friday October 4 at 7.00 pm and is by invitation. Invitations are available from the Art group's president Mrs Jenny Shaw or any member of WAG. All sponsors receive their invitation personally or by mail.

Come and admire what local artists have produced for your enjoyment, you might even like it that much that you would want to take the painting home.

Submitted by John Vander Reest

BUSINESS OPPORTUNITY

The time has come to retire. So, this profitable business is for sale. Genuine enquiries invited.

 **ZAPPA-do** *Baby and You!*

3/87 High St, Woodend • 5427 1270 • www.zappado.com.au



When you shop with a local business
YOU GET BETTER SERVICE

The logo for naturalgrace, featuring a stylized green and orange leaf design above the text "naturalgrace" in a lowercase, sans-serif font.

Holistic Funeral Directors

Natural choices in after
death and funeral care

5427 3112

info@naturalgrace.com.au

www.naturalgrace.com.au

Woodend BATA

Woodend Winter Wonderland was a huge success with the Woodend Library and Woodend Community Centre a hive of activity with children and their families working with Lulu and textiles in the library, having their faces painted by Fiona, storytelling with Danielle and Lyn, enjoying delicious cup cakes and soup made by the Woodend Playgroup and the hall was packed for the very lively and fun Flash Twinkle Toes Silly Circus Show on Saturday 27th July.



Families flocked to Woodend's Community Centre for fun kids activities

Thank you to all the children who participated in the colouring competition, entered the Best-Dressed 'Winter' Kids and Pet Parade, followed the yarn trail counting the motif and voted for the best dressed 'Winter Window' themed business display. Thank you also to the following business who donated prizes for the event: Bodywise Underwear, Color me Cooper, Feeling Framed, Kerrie's Bundle of Bears, Pets Haven, Target, Woodend Newsagency, Woodend Pharmacy and Woodend Post Office.

Congratulations to the Colouring Competition winners for their colourful entries. Special thanks to Alexia at Collier Office & Business Assist for donating the printing for the colouring in competition and all the coloured flyers which were placed in windows around town.

Winners of the Colouring in Competition

Woodend Kindergarten: 4 year old: Olivia, 5 year old: Bridgette. Primary Schools category (by age) 5 year old:



Blackbirds Cakes had the favourite window display, featuring this magnificent cake.

Cooper (St Ambrose PS); 6 year old: Georgia (Newham PS); 7 year old: Minna (Newham PS); 8 year old: Mariam (Hesket PS); 9 year old: Isabella (Newham PS); 10 year old: Tiana at (St Ambrose PS); 11 year old: Chantell (St Ambrose PS); 12 year old: Lachlan (Hesket PS).

Many thanks to all business operators who took the time and effort to participate in the Woodend BATA Customer survey, Best Dressed Winter Window and 'follow the yarn motif' display which was a talking point for many people.

Best Dressed Winter Window, and winner of a \$100 Voucher - Dinner for Two at Village Larder was Blackbird Catering – Sharyn Frantz. If you have not yet seen Sharyn's amazing handcrafted cakes, please pop in!

Best Dressed Winter Window voter, who won a \$25 Voucher to Maloa House was Elaine Saunders.

Follow the yarn motif winner was 9 year old Lily who received a \$50 Gift Voucher kindly donated by Coles.

For business operators

What information would be helpful to you as a small business? Please contact BATA at woodendtraders@gmail.com with your ideas and to register your interest.

When you shop with your local businesses

-you keep more money in your local community.

Submitted by Woodend Business and Tourism Association

THE WOODEND WOOF WALKER 

Call Chris for all your pet sitting needs.

All pets catered for on a home visit basis.

P: 0431 533 509

E: info@woodendwoofwalker.com

W: www.woodendwoofwalker.com

O'CALLAGHAN BROS Firewood Supplies

- ▲ Split Redgum & Box Firewood
- ▲ Large Bags Dry Kindling
- ▲ Sold by Weight or Measure
- ▲ Yard Pick Up or Delivery
- ▲ All Areas FREE within Victoria Small or Large Loads
- ▲ Registered Public Weighbridge Onsite
- ▲ Weighbridge Tickets for VicRoads
- ▲ After Hours Pick Up by Arrangement

OPEN 7 DAYS & Public Holidays
28 SAUER Rd NEW GISBORNE
5428 1955 0488 957 090


Specialising in:
CAR PARK KERBS • ASPHALT EDGING
GARDEN EDGING • VARIOUS PROFILES
REPAIR WORK

IAN
0409 443 036

Dr Alison Killoh

Beyond the symptoms

On Ash Wednesday in February 1983, Dr Alison Killoh arrived at the Woodend Fire Station (now the Video shop) to find one gumboot in a pool of water and four men locked into the operations room, which was completely cordoned off to the public. They were taking rescue and distress calls.

"I stood before the open door of the fire station and everything was pitch black, very apocalypse-like. Then there was a big explosion at the service station in Black Forest Drive. The wind changed and the fire galloped up Mt Macedon. I watched in horror and thought, 'What can I do? There are people dying up there now.' I knew the access problems and the rapidity with which the fire hit.

Then people started coming through requesting permission to return and collect relatives etc. One woman handed me her baby so she could go back and help. I recorded names of people who came through and tried to think of the disadvantaged people who would need help. I went to Donald's Road to help the ambulance officers rescue a stroke victim and his carer. Devon Lodge (now Excessories on the corner of High and Anslow Streets) was a special accommodation facility and when they asked for advice I said, 'Get everybody dressed and make the biggest pot of tea and bikkies you can. Just be ready to go.'

There was a great sense of helplessness. At that time I wasn't in practice and so I had no doctors' bag but I volunteered in Casualty at Gisborne hospital where I began to hear survival stories. Through my work with St John Ambulance, I developed an interest in Emergency Management and Post Disaster Recovery. I've worked with the Emergency Management Institute on Mt Macedon and I've held a continued interest in how communities



recover from emergencies. I'm particularly interested in Post Traumatic Stress Disorder because of my work with the fires and police over the years and have recognised my own stress as a response to Ash Wednesday. In the years since, I've been interested in seeing how people attend to rebuilding and the community issues that arise after a disaster. Ash Wednesday highlighted my sense of belonging to this community. My life is wound into it."

Alison grew up in Niddrie and attended Dousta Gala primary and Essendon High School. Her early competitiveness was apparent in the first week of school when she tripped on the bench seats she'd lined up as hurdles and split her head open. She went on to represent the Victorian Women's team in Amateur Athletics.

- Barefoot Hoof Trimming
- Sports & Remedial Massage for Horses
- Flexi-Tree & Treeless Saddles
- Renegade & Cavallo Hoof Boots

www.hest.com.au 0419 326 281
Woodend Victoria Australia

Holistic Equine Sports Therapy

JULIANA SMITH BN (Mid), LLB, GDLP

BARRISTER & SOLICITOR
Focusing on Family & Criminal Law
Bendigo & Macedon Ranges
Woodend Office (by appointment)
27 Urquhart St. Woodend Vic 3442
72 Queen Street Bendigo 3550 Victoria (head office)
T: (03) 5444 1181 E: info@jlaw.com.au

Testimonials
"I was extremely happy with my service from Juliana Smith and her team. They were so compassionate and I felt I was provided with quality advice and service. I would recommend them to anyone." M.M. Gisborne. May 2013.
"Juliana took on a case a lot of solicitors wouldn't have. Juliana listens, gives honest advice and got a good result." K.B. Bendigo May 2013.

**Massage
Pilates
Remedial
Rehabilitation**
with Pamela Kell

By appointment
22 Goode Street
Gisborne
5428 1000
0408 093 098

Assisting in the repair and maintenance
of your body

**Truck &
Bobcat
Hire**

- Paving Turfing Rockeries
- Paling & Colourbond Fencing
- Watering Systems Retaining Walls
- All of your garden and driveway construction catered for

CD & MC Muir Pty Ltd
craig@bobcatcraig.com
0417 331 085 5427 3095

Her academic aptitude was no less apparent with science her great love. 'It was not so much about compassion that I chose medicine over teaching, as to extend my love of physics and chemistry and the amazing world of science. I enjoyed all medical studies, particularly learning to solve problems.'

Alison then fell from the academic world of uni to the harsh reality of night duty in Emergency at Western General Hospital in Footscray.

'I started on a stinking hot night on the first or second of January and it was so busy with road trauma and the like. It was a horrendous experience and I was quite neurotic by the end of it. I was terrified of making mistakes. Urgent care medicine was humbling. Thank god for experienced nurses, who groan every year when we new interns come through.'

To combat burn-out, Alison and her husband Charles visited Scotland to meet his parents and she returned to GP training where she found herself engrossed in the human aspect of her patients. 'I'd have all the cubicles full and I'd be getting the life story of everybody and the nurses would be ripping their hair out.

I was beginning to enjoy being with people and getting their story but acute care was not the right setting. One day after about 45 minutes with a young girl, the nurse said, 'I think you should find yourself a country town and be a very good country GP.'

We moved to Woodend where Charles had been building the house and eventually we had two children. I became involved with the Uniting Church, St John's Ambulance, the Emergency Services and the schools. I also worked to establish the Cobaw Community Health Service as the need for counselling, physio and other services increased. I swapped my mother's apron for a duffle coat

in order to attend the first community meeting. I latter became President and Chair of the committee. It was a great model of holistic health care.

I began doing locum work in the mid 1980s and I went back into practice about 1990. I was well established in the community and there was a need for a resident doctor, however I felt I needed the support of other GPs and so Peter Ferguson and I bought Dr Waters' business and started the Brooke Street Medical Clinic. We implemented a 24-hour service and Richard Bills quickly came to the rescue. We welcomed him with open arms.

I love to hear stories, to understand people's lives. People have all sorts of physical ailments that I've been trained to recognise and treat with pills and potions and lotions, but very early on I was interested in their whole story. The medical condition is just one part of the equation and people respond in different ways to illness. Right from the beginning of my practising medicine, my consultations became longer as I engaged people more in their story.'

Alison was awarded Citizen of the Year at age 40 though she credits the many people who have 'created the stages upon which she has danced.' The award reinforced to her that she was living her life among people with whom she shares much in common.

Brooke Street now employs close to 50 people and though Alison retired from patient consultations in 2009, she continues working in the Woodend Aged Care facility and teaches Monash 4th year medical students. Through these and other community groups Alison continues to actively involve herself in the Woodend community in which she is a valued and highly respected member.

Photography and story by Kathy Mexted



JUST ASK GEOFF
Rural & Domestic
Handyman Services
0417 311 806

For all those jobs the others won't do...

- Small storage, wood & chook sheds
- Small Farm Odd Jobs & Repairs
- Fallen trees – cut & split
- Gorse & Blackberry mulching
- Small cabinets, woodwork & woodturning
- Custom CNC Wood Engraved Signs & Carving

Join us on

 *Just Ask Geoff* or

email info@justaskgeoff.com.au

www.justaskgeoff.com.au

Anna Redenbach
Nutritional Consultant

B.HlthSc (Nutritional Medicine), Cert. IV Health Science (Nursing)
A.N.T.A registration AHPRA registration

Nurturing health in a holistic manner

-  dietary and lifestyle review
-  diagnostic evaluation
-  emotional support

Good health and vitality can not only be achieved, but sustained.

M | 0424 144 265 **E** | anna.redenbach@gmail.com
A | Suite 1/4 Collier Street, Woodend

Lachlan Fleming **CONSTRUCTIONS%**

EXTENSIONS, RENOVATIONS, NEW HOMES

SERVICING THE MACEDON RANGES



0401 499 898



Email: flemingconstructions@bigpond.com



Marriage Celebrant

Patsy Buckland
0437 179 078

www.allmarriagecelebrations.com
Located in Woodend

Christmas in August

Hesket Primary School students were delighted with their untimely Christmas dinner recently. The students enjoy their weekly Masterchef Cooking Classes but had the extra challenge of preparing and serving a Christmas feast for the whole school to enjoy. The students prepared a roast with all of the trimmings and plum pudding ice cream for dessert. Some students were busy decorating the table and ensuring the room had that warm, festive feel.



(L) Prep student, Jessica is ready to enjoy her main course. (R) The students seated at their Christmas table.

The young chefs are excelling at typing up their recipes at each session. Those Maths skills are certainly put to the test in ensuring quantities are correct. The children are looking forward to harvesting fresh vegetables and herbs from their garden bed. Grade 2 boy, Myles is busy checking each day on the plants growth and ensuring that no weeds are to be found. "Our dinner was really delicious, especially the dessert," commented Grade four student, Imogen. "We can really cook!"

Submitted by C Palmer, Hesket Primary School Principal

Film Night

The Macedon Ranges Rural Australians for Refugees group will host a film night, showing "Between the Devil and the Deep Blue Sea" in support of the Asylum Seeker Resource Centre in West Melbourne.

To be held at The Norma Richardson Hall, Buckland Street Woodend on Friday 27th September. The evening will start at 7pm. Bring along your family and friends to support this event. All donations to ASRC.

Enquiries to Rosie 0417 730 978.

Submitted by Sheila Drummond

CASTLEMAINE—GISBORNE CLEANING SERVICE

CHRISTINE ADAMS, P.O. Box 240 CASTLEMAINE 3450

Carpet Cleaning Specialists

Duct Cleaning, Window Cleaning, etc.

For all your cleaning requirements

- no job too big or too small -
obligation-free quotes

christineadams9@bigpond.com

Mobile: 0419 006 591

**BE LOCAL
BUY LOCAL**

SUPPORT OUR COMMUNITY AND SHOP LOCALLY

NURSERY ROAD

GARDEN SUPPLIES

Sand | Soil | Mulch | Pots | Plants

Water features | Fire wood

Hire Equipment | Synthetic turf

Sleepers | Wine barrels | Pavers

42 Nursery Road Macedon 3440 Victoria | Email hello@nrgsupplies.com.au

Telephone 03 5426 2400 | Facsimile 03 5426 4972

General open hours Monday-Friday 7:30-5pm, Saturday-Sunday 9-5pm

Arrangements outside these hours can be made.

POLARIS

Financial Services Pty Ltd

www.polarisfp.com.au

ABN 99131105514

Your Income Is Your Greatest Asset

Did you know that premiums for income protection insurance where your plan is held as a personal plan (outside super) are tax deductible!

Did you also know that if you place Income Protection Insurance within a superannuation fund:

- Your super fund pays your premiums. This puts more money in your pocket & Improves cashflow for business people & professionals
- You can set up a plan with the same benefits as a personally held policy, like a benefit period until age 65 or 70 years.
- The premiums become a tax deduction to your super fund.

If you have an old personally held Income Protection policy and a recent health issue that could prevent you from being re-underwritten, in many cases we can transfer your policy into a super fund without having to underwrite you again.

If you were to get sick and become unable to work for a period or the rest of your life your income would cease whilst you couldn't work. This is why it is so important to hold income protection insurance.

Work cover only covers you if you become injured at work. It doesn't cover you at any other time. The amount that Work cover pays is capped, so higher income earners would be paid much less than their wage whilst recovering. Work related permanent disabled could be paid a lump sum payout, in general the amount is quite a lot less than what they actually need. So Income Protection insurance would ensure that even if you become injured at work you would be able to receive an on-going income in addition to the Work cover payout.

Centrelink do pay a sickness benefit whilst you are recovering, provided that you have your job to go back to once recovered. If your job ceases, Centrelink ceases. The payment is the same amount as the NewStart Allowance, which is tiny and would barely cover most mortgage repayments. Again Income protection is Vital.

Call in and talk to Peter Willmott. He can structure your insurances in a smart cost effective way

Peter Willmott Insurance Adviser

Authorised Representative # 443474
Securitor Financial Group Pty Ltd AFSL 240687

securitor

BT
Financial Group

Office: Shop 6 / 38 Brantome St Gisborne Ph 5420 7373

Vet Angel

'at home euthanasia' service is the gentle way of saying goodbye to your beloved pet.

Euthanasia means "good death," and is the act of ending a life in order to relieve pain and suffering. You might consider having your pet euthanised (or 'put to sleep') if it has a painful and incurable condition, or if debilitating age-related changes impair its quality of life.

The decision to euthanase a beloved pet can be one of the toughest decisions an owner must make. As a veterinarian with over ten years experience I can help you with this decision. I offer consultation over the phone and in your home. I am happy to work with your usual veterinary practice. If it is possible to make your pet comfortable then palliative care is available.

At home euthanasia means that you and your pet remain in peaceful and familiar surroundings. There's no car trip, no need to sit in a waiting room full of people, no need to be hurried. You can choose a time that is more convenient to you and your family outside normal clinic hours. While cuddling your pet in its favourite spot, medication is given to create a deep relaxing sleep. Once asleep, a lethal dose of anaesthetic is administered. You can bury your pet at home or I can arrange for your pet to be cremated individually or in a group. If your pet dies naturally at home I can collect your pet and provide the same aftercare.

Submitted by Michelle Williams



Vet Angel

Compassionate end of life services for companion animals in your home

- Consultation • Palliative care
- Euthanasia • Burial or cremation

Dr Michelle Williams BSc BVMS (hons) 0408 506 836

Woodend R.S.L

Please note that a special general meeting will be held at the Woodend R.S.L at 7pm on the 3rd September 2013 to endorse the rule changes passed at the State Conference in July. Then the General Meeting as advertised in the newsletter will follow.

Submitted by R.J Till – Vice President Woodend R.S.L

ADVERTISEMENT

Woodend is part of the Bendigo Electorate for the next federal election.

LABOR CANDIDATE FOR BENDIGO

LISA CHESTERS



PO Box 58 Bendigo 3552
E lisa.chesters@vic.alp.org.au
T [@LMChesters](https://www.facebook.com/LisaChestersBendigo) /LisaChestersBendigo

Contact your local ALP Branch on 5427 3644

Authorised by B. Murray 34 View Street Bendigo 3550

The Spring Sessions

@ Woodend Community Permaculture Garden

Want to make a real difference on election day? Come along to the Woodend Community Permaculture Garden's Spring Sessions and get some valuable local advice on growing your own organic fruit and vegetables.


Spring is the perfect time to get back into the garden and prepare for the growing season ahead. Three short sessions will provide Macedon Ranges locals with some useful tips about growing successful summer crops, preparing soil, and planting bush foods.

"The free sessions involve locals teaching locals about their experiences growing fruit and vegetables in the Macedon Ranges", explains organiser Krista Patterson-Majoor from the Macedon Ranges Sustainability Group. Presenters include experienced gardeners, Bruce Hedge, Alice Aird, Helen Scott, and Marg Thornell and indigenous flora expert, Jessie Szigethy-Gyula.

The Woodend Community Permaculture Garden will provide the perfect backdrop for demonstrating and sharing some great ideas. The garden is located behind the Neighbourhood House, at 47 Forest Street. Starting at 9.30 am on Saturday 7th September, each session will run for half an hour with morning tea available in between, as follows:

- 9.30 am: Local Secrets for Successful Summer Crops with Helen Scott, Bruce Hedge and Alice Aird
- 10.15 am: Preparing your soil for planting with Marg Thornell
- 11 am: Bush Foods Garden Launch and Planting with Jessie Szigethy-Gyula

continued on page 10



SUNBURY & MACEDON RANGES FAMILY DAY CARE

established service for more than 30 years!

- ✓ Childcare with qualified educators working with children in small groups.
- ✓ Current vacancies are in Romsey, Lancefield, Woodend, Sunbury for babies, toddlers, pre-schoolers and school age children.
- ✓ Educational programs to meet individual needs.
- ✓ Flexible hours arranged, charged on hourly basis - 7 days per week.

Contact the Family Day Care Coordinator
9744 9534 or fdc@sunburychc.org.au



Blue Orange Concepts

now stocking

WOOD WICK CANDLES

Shop 2 130 High Street, Woodend 3442
Telephone 03 5427 4500

open 7 days

continued from page 9

The Spring Sessions continued

As Alice Aird suggests "you'll never regret that you planted some veggies, only that you didn't".

A showbag of garden goodies will be given to the first ten people who register for all three sessions. For more information and to register call Krista on 0408 204 449 or email kristafish@hotmail.com.

Submitted by K Patterson-Majoor

Farmers' Markets in September

Woodend - 7th September Kyneton - 14th September

Riddles Creek - 21st September Lancefield - 28th September

All markets from 9am to 1pm - get in early for best selection!

Premium quality meats - homegrown, conventional & organic vegetables & fruits, free-range eggs, honey, cheese, organic sourdough bread, exceptional preserves & sauces, rare plants, potted herbs, fine regional wines, award winning olive oils & much much more!

Bring your own bags, baskets & trolleys. Dogs (friendly) welcome on a leash. Free face-paint for the kids. Live music from local musicians.

"Victorian farmers' markets provide an opportunity for our farmers to sell direct and take full credit for their efforts. By shopping at farmers' markets customers are guaranteed access to quality, freshly harvested produce whilst supporting local farmers and directly putting money back into regional Victorian communities."

More information go to www.vicfarmersmarkets.org.au

Submitted by Meggs Hannes

A Grand Tasting

Due to the great success of last year's - Grand Tasting It's on again!!

This is your chance to attend a fabulous event where you will have the opportunity to taste a huge range of boutique wines, craft beers and ciders from Australia and around the world as well as cheese from the Calender Cheese Company.

Every ticket purchased before the event will go into the draw to win a mixed dozen of wine and other door prizes. Great discounts will be offered for ordering on the day.

The Grand Tasting will be held in the main dining area of the Bentinck on Saturday 12th October from 1pm to 5pm. Tickets for the tasting are \$22 (\$25 on the day) this also includes tea, coffee and petit fours with live music by Sarah Wilkinson.

Please note that persons under the age of 18 will not be admitted. Contact Caz, Caz 2 or Caite at Woodend Wine Store Monday - Thursday 10pm - 7pm, Friday - Saturday 10am - 8pm, Sunday & Public Hols 11am - 6pm call 5427 2228 or email caz@woodendwinestore.com.au

Dont forget to check out www.woodendwinestore.com.au/latestnews for all details.

Submitted by C Bailey

And Pigs might fly!

Newham Mechanics Institute has just received a community grant from the Macedon Ranges Shire Council for a Sculptural Pig Project.

Ten fibreglass life size pigs will be manufactured (they will be an upscaled version of the small brass pig outside General Store - Newham's mascot)

Local artists of note will each decorate a pig, with the tenth to be decorated by pupils at the Newham Primary School. All ten pigs will be displayed in strategic locations around the village for a month before a pig festival, and the local community & visitors will vote to select the three to be placed permanently around the village.

The event will conclude with a Festival in Autumn 2014 comprising Pig Art installations in Mechanics Hall, Newham, community orchard produce and local musicians. This will build on the very successful Sustainability & Harvest Festival community days.

More details will be given in future New Woodend Star editions. Sculptural Pig Project Steering Group members can be contacted on 5427 0661.

Submitted by Fran Spain on behalf of steering group

BLACK FOREST

• Sales • Service
• Spare Parts

Mowers & Brush Cutters

5427 2693

Blackforest TYRE AND AUTO

• GENERAL MECHANICAL REPAIRS • BATTERIES • WHEEL ALIGNMENTS
• SERVICING ALL MAKES AND MODELS • NEW & SECOND HAND TYRES • HANDS FREE CAR KITS

66 UROUHART STREET, WOODEND

SELL YOUR CAR TODAY

Prestige ~ Family ~ Sports ~ 4X4

car connect direct

0418 183 360

Cash ~ Bank Chq ~ Finance Paid Out
Email: ccdirect@bigpond.net.au
LMCT - 10132W



THE SEPTEMBER OF OUR YEARS

The Greatest Hits - *By request.*
 (...with sincere apologies to Frank Sinatra.)

Patrick, for you the Creme Caramel; Kate, the Haloumi salad; Rob, the Nut-crusted beef cutlet; For Wendy, the dark chocolate tart. The beat goes on. Here they are...Enjoy.

Saturday, September 7

Fried haloumi with potato and olive salad
 Nut crusted yearling beef cutlet and minted green beans
 Crème Caramel

HOURS

Monday - Thursday 8.30 - 4
 Friday 8.30 - 9pm
 Saturday 8.30 - 4 & for dinner from 6.30 - late

Saturday, September 14

Seared sea scallops with celeriac puree, guanciale and roast apple
 Keepsake casserole
 Dark chocolate tart with blood orange

Christmas gatherings? Friday evening drinks? Catching up with mates? Checking out your daughters new boyfriend? You can do all these things and more at Colenso! And keep in mind, we are open all through the day and into Friday evening.

Saturday, September 21

Tagliolini al limone
 Braised lamb shanks with parsnip puree and caponata
 Walnut cake with sherry and muscatel ice cream



Saturday, September 28

Citrus cured salmon with our flatbread, beetroot relish and creme fraîche
 Slow roasted pork neck with crushed nicola potatoes, sauteed cabbage and pancetta
 Apple tart with sour cream ice cream

And another thing...

DECEMBER HOLIDAY HOURS

CLOSED DECEMBER 23, 24, 25 & 26 and return to regular business hours.

Eating Out, In & Around Woodend



Bar • Bistro • Accommodation

Function Room available for 21sts, Birthdays,
Weddings, Conferences etc

Come along and enjoy great food and open fire

FATHERS DAY LUNCH

bookings essential

DEAN & CURRUTHERS

5th October

MACEDON WANTS A MATE SINGLES NIGHT with DJ

9th November

lunch and dinner - Wednesday to Sunday

a: 33 Smith Street Macedon 3440
p: 5426 3233 w: macedonrailwayhotel.com.au
facebook: Macedon Railway Hotel

It's time to say
"Thanks for all your hard work"

A light hearted long lunch over a **High Tea Party**
in elegant surrounds is a unique way to celebrate
the success of your 2013.

From just \$49 per guest which includes
the first glass of bubbly, as an added
bonus* to you every 10th guest is free!



CAMPASPE HOUSE
A COUNTRY HOUSE HOTEL & RESTAURANT

*Monday to Friday events

GOLDIES LANE WOODEND 03 5427 2273
www.campaspehouse.com.au

BE LOCAL - EAT LOCAL

SUPPORT THE LOCAL BUSINESSES WHO SUPPORT THE
AREA WHERE YOU LIVE, WORK AND PLAY

* FAB FOOD
* FUNCTIONS & CATERING
BY ARRANGEMENT
Bookings Essential
BYO wine only
Light Snacks Mondays
Free entry for
Macedon Ranges residents

Tel: 5427 0295

Large range of Australiana Gifts

Hanging Rock Café & Country House



BAR & BISTRO
THE VICTORIA HOTEL WOODEND

FUNCTION ROOM

Are you planning a

Function, Celebration, Meeting,
Workshop, Trade Show, Gathering,
Reunion, Wedding, Birthday, Wake.
Work Farewell or Breakup.

Call us.

Also Private Meeting Room
Seats 20

See website for details
www.vicwoodend.com.au
email: info@vicwoodend.com.au
03 5427 2721
67 High Street, Woodend



**Award winning Bread,
Pies & Cakes**

Shop 1 & 2, 115 High St, Woodend

Open daily from 7am

54272486

www.bourkies.com.au

Eating Out, In & Around Woodend



The Village Larder

Now Open for
Dinner
Every Friday & Saturday!

Open 7 Days
81 High St, Woodend
Phone 5427 3399
info@thevillagelarder.com.au
www.thevillagelarder.com.au
facebook: The Village Larder
twitter: @villagelarder



Holgate Brewhouse – Bar & Restaurant



Microbrewery Hotel with cosy fires, stained glass windows and friendly atmosphere.
Award winning local beer made on site. Delicious house made bread, pies and desserts.
Function rooms & stylish accommodation in the heart of Woodend.
Open 7 days lunch & dinner.

79 High St Woodend
Ph 54272510
www.holgatebrewhouse.com

*Space is available in the
Eating Out Guide.
A great way to promote your upcoming
Christmas events and menus.
email sales@collieroffice.com.au
for more information*

BUSINESS FOR SALE

RedBeard Historic Bakery + Café



A regional icon

- Located in beautiful Trentham, Victoria's fastest-growing tourist town
- Organic sourdough bakery + 125-seat café
- 8 years of continuous profitable growth
- 2013-14 forecast revenue \$1.7 million (~60% from café)
- Experienced local staff
- Recent designer renovation + fit out
- Long lease

Contact Michael Kerr for more information:
M. 0416 213 300
E. michael.kerr@kerrcapital.com.au

Picture yourself with a red beard...

RedBeard Historic Bakery is now for sale. Located in Trentham, RedBeard is famous for superb organic sourdough, baked in a historic woodfired oven. The business - which opened in 2005 - also comprises a highly popular café, regular group tours, booked-out baking workshops and busy stalls at many regional farmers' markets.

'It's with trepidation that we announce that we are selling RedBeard, as we know that many of our customers have a strong interest in, and an emotional connection with our business,' said Alan Reid, who co-owns RedBeard with his brother John.

'Creating and running RedBeard has been extremely rewarding. We are very proud to have built such a popular regional institution on foundations of traditional baking craft, high-quality ethical food and environmental sustainability. 'However, it has been an intense experience, at times testing the limits of brotherly love and family tolerance! After 8 years, John and I are ready to move on and follow different dreams,' explained Alan.

'We have diligently put systems, equipment and a great team in place to ensure that RedBeard can thrive under new management. We intend to pass the RedBeard baton (or baguette!) to someone with the same passion that we have put into the business.'

We'd like to thank all our customers for their support and our talented staff for their ongoing input. We are grateful to be part of the wonderful community of this region.

Submitted by Bec Colles

Do you travel to Melbourne and need help attending medical or dental appointments?

Approximately 50,000 regional Victorians travel to Melbourne each year for medical treatment. But a lack of familiarity with Melbourne's public transport network can be problematic for many older people from regional Victoria. When this is compounded by a disability or medical condition, navigating to a medical appointment can seem a formidable task.

There is a terrific service available to anyone who needs assistance to negotiate Melbourne to get to a medical or dental appointment.

The service, provided by Travellers Aid, will arrange for a Medical Companion Service volunteer to meet you at Flinders Street or Southern Cross Stations and accompany you to your appointment.

If you find it difficult to get about there is a free buggy service also offered at Southern Cross Station. Buggies need to be booked with 48 hours' notice when arranging the Medical Companion service.

The Medical Companion Service operates Monday to Friday 8.00am – 6.00pm and weekend or out-of-hours services can be requested depending on volunteer availability. Travellers must purchase their own public transport tickets, but the cost of the volunteer's transport is covered by Travellers Aid.

Make your booking by calling 1300 700 399 between 7.15am – 9.45pm (7 days per week) or leave a message on the Travellers Aid answering machine with your name, contact number and a Travellers Aid staff member will return your call to finalise your booking.

If you are deaf or hard of hearing, you can email scs@travellersaid.org.au for a booking form or call the relay service on 133 677 before calling 1300 700 399 to make your booking. Please allow 48 hours for confirmation.

Warm regards - Joanne Duncan MP State Member For Macedon

Grandparents Day at St Ambrose

On Wednesday, July 24th, St Ambrose Parish School held its annual Grandparents Day. We were overwhelmed by the large number of visiting grandparents, parents or special friends who joined us for the day. We celebrated Mass together with our Parish Priest, Father Martin Fleming, and our beautiful church was "packed to the rafters!" At our reflection, a large number of children read out their thoughts about their Grandparents and these proved to be funny, touching and often quite beautiful.

After Mass, we returned to our classrooms where hives of activity could be seen until the bell rang!! Many children enjoyed a shared lunch with Grandparents, parents, family and/or friends. While the children enjoyed a play outside, many of our visitors gathered in the Supper room for some refreshments. Our visitors were treated to delicious scones with jam and cream, made especially for them by the students in Year 5/6F, under the watchful care of one of our parents, Maria Williams. Our Year 6 students waited on our guests and did a terrific job! Altogether, it was a most successful day thanks to the efforts made by our students and staff, and of course, our special visitors! We love having our Grandparents visit and look forward to doing it all again next year.

Submitted by Jayne O'Callaghan, R.E.L. St Ambrose

ADVERTISEMENT

JOANNE DUNCAN MP

MEMBER FOR MACEDON

As your local Member of Parliament I am keen to listen to any concerns or ideas you may have.

Please don't hesitate to contact me for assistance on any State Government matter.

Warm regards,
Joanne Duncan



Shop 14/9 Goode St, Gisborne VIC 3437

P: 5428 2138 F: 5428 2919 E: joanne.duncan@parliament.vic.gov.au

www.joanneduncan.com.au

Authorised by J Duncan, Shop 14/9 Goode St, Gisborne



**Kid's Cake
Decorating Classes
at Blackbird Cakes
on the
SCHOOL HOLIDAYS**

Check our Website for details!

**BLACKBIRD
CAKES**
37A ANSLOW STREET
WOODEND
5427 2473

WWW.BLACKBIRDCAKES.COM.AU



PAULINE BROWN

Pauline Brown retired to live in Woodend about three and half years ago. Many of you will recognise her however, as her connection with Woodend began many years previously. As the Braemar College Careers Advisor from 1990 to 2003, Pauline has influenced the lives of many young local people. Pauline then worked for Melbourne University also as a Careers Counsellor, and then as a Business Service Manager prior to her retirement.

Pauline had volunteered during earlier stages of her life, but was looking forward to retirement and the opportunity to devote more of her time to the causes she passionately believes in. A chance invitation from a neighbour to attend the Red Cross Big Cake Bake, at the Woodend Community Centre in 2011; has led to Pauline's continual involvement with the group since that date. She has now accepted the position of Secretary, and says she enjoys volunteering with a group of like minded women, within her local community.

Pauline also volunteers at the Asylum Seeker Resource Centre in North Melbourne on a weekly basis. Her role is as an Education Advisor, and Pauline says to work with such gracious and appreciative people is an absolute pleasure. "They are so grateful, it is almost embarrassing. The tiniest thing you do is appreciated so much". Pauline views her volunteering as a way of contributing, and says that our response to asylum seekers is our biggest challenge as a nation. There are many myths regarding asylum seekers. The reality is that after release from detention they receive six weeks of rental assistance, and then they are on their own. Pauline's volunteer work organising English language classes and training courses, is a minefield of legislation. Some people are eligible for training, others are not. This is all determined by when and how they arrived in Australia. All boat arrivals since August 2012 are not entitled to do any paid work, training or study at all.

Pauline believes that she receives much more from her volunteering work, than she could ever possibly give. It is an incredibly important part of her life, and her contribution to our local and broader communities is greatly appreciated and respected by all.

Written by Marion Coulson
for Woodend Neighbourhood House – Woodend Connects

**green bean machine
mobile coffee**

new drive through location

**Black Forest Saw Mill site
Black Forest Drive**

**Mondays to Fridays
9.00am to 12 midday**
(excluding Public Holidays)

also at the Woodend Train Station
Platform 2
Mondays to Fridays
5.15am to 8.30am
(excluding Public Holidays)

for fast efficient drive through service
**SMS your order
0439 354 432**

Like us on Facebook
www.facebook.com/thegreenbeanmachine

For more information contact
Dean on 0439 354 432

In conjunction with Woodend Neighbourhood House, The New Woodend Star will highlight some of the wonderful volunteers who contribute so much to our community.

Did you know 1 in 4 people living in Woodend are volunteers? That's amongst the highest in the nation, and part of the reason Woodend's groups and clubs are so varied and vibrant. If you would like to highlight the actions of a volunteer you know - email sales@collierooffice.com.au for more information.



Macedon Ranges Community Exchange

Macedon Ranges Community Exchange offers an alternate way to participate in the local economy by trading skills, services and products without using cash.

Participating in the Community Exchange strengthens your local community and can improve your quality of life. It is not intended to replace the money economy but can provide the 'something extra' that you may otherwise miss out on when money is scarce.

Our local currency is 'rocks'. A 'rock' is a credit to the value of an Australian dollar. These credits are generated when you provide a service or 'sell' an item to another member. Credits generated can then be used to spend on other members offerings.

New offerings include; VCE English tutoring, farm produce, heat lamp, George Foreman grill, picture frames, washing machine, sewing repairs, shed storage space, weeding, business assistance, bike rack for car, organic chick peas, portable pet cage for hire, draught excluders for doors, gardening & lawn mowing, chickens & garden design.

New wants this month include; styrofoam boxes with lids in good condition, large plastic tubs, an old boat, help with gardening, house cleaning, window washing and more. These are just the NEW listings, to find these and many more, sign up on the website www.mrce.net.au to access the system. *This is a free service* provided by volunteer administration & auspiced by the Lancefield Neighbourhood House.

Macedon Ranges Community Exchange recently received funding through the Macedon Ranges Shire Community Grants program. This will be used to promote at local farmers' markets & at other local events

The first members market (a place where members can meet, trade goods & discuss services they have on offer, with other members & the general public who may be interested in joining this great network) is scheduled for Sunday October 13th at Lancefield on the Central Plantation in High St from 10am to 11am.

Please let us know if you would like to participate in this first market & we can promote your presence through the MRCE newsletter as we approach the day. You will need to be enrolled as a member for consideration. More information? Please check out the website or ring 0407 860 320.

Submitted by Meggs Hannes



"for all your water needs"

The Water Bloke Specialises in

- Rainwater Tank Installations
- Tank To Toilet connections
- Grey Water Recycling

We're based in Woodend, so call us for a free consultation and Water Audit of your home.

Contact Craig on 0410 275 714
thewaterbloke@gmail.com



SOVEREIGN financial

Sovereign Financial is a family business built on the values of Trust, Insight, Expertise and Relationships. We are an independently owned financial advisory firm that specialise in a range of services including:

- Retirement Planning
- Wealth Creation
- Investment and Portfolio Management
- Taxation Advice
- Estate Planning
- Centrelink Advice
- Personal Protection Insurance

Please contact Jerome Smith or Sarah Connolly on 03 9629 9223 to arrange a time to speak to one of our experienced advisers.

Office Locations:

Ballarat Office
88 Mair Street East
Bakery Hill
03 5333 7088

Melbourne Office
Suite 1 Level 6
470 Collins St
Melbourne
03 9629 9223

Kew Office
5 Wellington St
Kew
03 9855 0578

Sovereign Financial Group Pty Ltd AFSL 383416

ZIPTRAK Panel Blinds

@ **Bradley's**
Curtains+Blinds

t 5427 2361 fx 5427 1019
72 High Street, Woodend VIC 3442



Protect your entertaining area all year around by enclosing it with the mesh or PVC panel blinds.

Specially designed slotted side tracks allow the blind to glide smoothly and easily and to stop at whatever location you require.

Versatility of spring, crank or motor operation.

WOODEND HEARING CENTRE



Did you know 1 out of 6 Australians suffer from hearing loss?

- Are you having problems understanding what people say?
- Do you have problems hearing in background noise?
- Have you worked in a noisy environment?

If you answered yes to any of the above, you may have a hearing loss.



Woodend Hearing Centre

Located in the Brooke Street Medical Centre
Cnr Brooke St & Templeton St, Woodend

P: 5427 1002 M: 0425 238 109

Government and worksafe accredited practice. Latest digital technology available. Hearing aids fitted free to pensioners* (*Conditions apply)

Spring High Tea

The Romsey Region Women's Network (RRWN) is excited to announce tickets are now on sale for our Spring High Tea next month. The event will be held in the stunning gardens of Campaspe Country House in Woodend and is open to all women in the Macedon Ranges. The focus of the occasion will be on women's health & wellbeing and the importance of women gathering in friendship.

Held at Campaspe Country House - Goldies Lane, Woodend on Sunday 20th October - 12.30pm til 4.00pm

The event features guest speakers

- Taryn McKerrow - Simply Divine Life & Women's Health Loddon Mallee, Bendigo
- Melaine Traynor - You Can Fitness, Romsey
- Kathryn Riches - Colenso, Woodend
- Scott Pape - Barefoot Investor, Chintin

Ladies come in your prettiest dress

To register your interests please email - info@rrwn.com.au. Tickets are \$50 and include, "Roaming High Tea" & gift bag full of goodie and are on sale till the 30th of September, so get in quick as we are limited to 80 guests. This is sure to be a fabulous day - a great opportunity to get dressed up and meet some amazing women in our region. Based on the success of the day we hope to make this an annual event that people come to look forward in their calendar.

A big thank you goes out to the Lancefield & Romsey Community Bendigo Bank for helping make this event possible. Any profit made will be donated back to someone in our community whether it is an individual in need or make a contribution towards a larger community project.

Enquiries welcome Romsey Region Women's Network Inc., 111 Main Street, Romsey VIC 3434, Email: info@rrwn.com.au, find at [Facebook.com/Romsey Region Women's Network Inc.](https://www.facebook.com/RomseyRegionWomen'sNetworkInc) (RRWN)

Submitted by Hanna Sutton

ADVERTISEMENT

Greg Bickley

Liberal for Bendigo



*Real Local.
Real Action.*

Office 51 Bull Street, Bendigo 3550 Phone (03) 5443 0924
Email greg.bickley@vic.liberal.org.au Web gregbickley.com.au

Authorised by Damien Mantach, 104 Exhibition St, Melbourne VIC 3000.

You have Questions  We have Answers

CHINKA (HEP) STEEL - Your "One Stop" Legal Shop

Expert Advice Available

- | | |
|-----------------------------------|-------------------------------|
| * Family Law—who gets what? | * Executor responsibilities? |
| * Been charged by the Police? | * Been left out of the Will? |
| * Conveyancing - avoid the traps! | * Buying/Selling a Business? |
| * Need a Parenting Agreement? | * Do you have a current Will? |
| * Need a Co-habitation Agreement? | * Are you a Victim of Crime? |

Ph: 03 5427 2477

74 High St Woodend
chinka@chinkasteel.com.au

www.chinkasteel.com.au

Visit our website for information on various areas of law, useful links, downloadable brochures, plus much more!



FAIRHURST CONVEYANCING
and Secretarial Services

For all your

Property Transfers

Ring Sue Fairhurst on

5427 2382

27 Urquhart Street, Woodend

MVCA & AIC

Lost medical forms

After you've left your appointment: where do you store your pathology request forms, referrals, and reports? We request that you put them in a safe place, that's easily located for when they're needed.

We are often asked to chase up copies or make duplicates for patients who have misplaced these documents. This takes time away from other patients who are booked on the day and leaves staff running behind.

Your assistance would be much appreciated.

Is food or nutrition an issue?

Many people struggle to lose weight. Others aren't sure what diet would be best for medical conditions, food allergies, pregnancy, children or vegetarians. Some people just want to know how to deal with junk food cravings.

Our dietitian and nutritionist Annie Barry can help with all sorts of food and nutrition related issues. She also understands that many people often struggle with personal issues related to eating. To make an appointment or enquire about fees – call 5427 1002.

After-hours service



As discussed in our last edition, after-hours services are now coordinated by the Macedon Ranges & North Western Melbourne Medicare Local.

For assistance outside our opening hours, call:

“After hours GP helpline” on 1800 022 222

In the first instance patients will speak with a Registered Nurse who will assess your needs and transfer the call to a GP if required.

The doctor at the helpline has access to detailed information about nearby hospital services for referral if urgent care is required.

**In a medical emergency, always call
000 - for an ambulance**

Brooke St. Medical Centre – tel. (03) 5427 1002

Just because you're older...

... doesn't mean you have to be at high risk for falls. Many hospitalisations and deaths related to falls can be prevented with some simple steps!



What are some of the falls risk factors?

- Poor footwear
- Poor spectacles
- Home hazards
- External hazards
- Poor balance
- Muscle weakness
- Slower reaction times
- Medical conditions

Use it or lose it – but you can improve it

People often become “deconditioned” – ie. they become unbalanced and lose physical ability through lack of activity, flexibility and muscle strength. With help and practice – you can improve this.

We can help you reduce falls risks

Our Exercise Physiologists can help you regain or improve balance, strength and flexibility.

After properly assessing your falls risk, a gentle plan will be developed to help you move in ways that reduce your risk for falls.

Other things to do

- Aside from booking in with one of our Exercise Physiologists for a proper assessment and treatment plan, you can:
- Talk to your GP if you think you are at risk – you may need related illnesses treated, medications reviewed, etc.
- For those aged 75 and over - participate in an annual Medicare health assessment. Our nurses can make referrals for practical supports in your home.
- Ensure you wear well-fitting shoes with low or no heels and good non-slip grip.
- Get hazards for tripping, in and outside the home, removed.

After hours GP Helpline - tel. 1800 022 222

WOODEND PLAYGROUP inc

The good news keeps coming for Woodend Playgroup!

Woodend Playgroup is delighted to announce that it has successfully secured a Telstra Kids Fund Grant to the value of \$1,200 for its learning corner project.

With the help of local designer and committee member, Amanda Tout, Woodend Playgroup will create a dedicated learning corner that promotes different types of learning and stimulation through play.

Amongst the many varied benefits of the learning corner, activities will promote the use of language, logic, spatial awareness, music and interpersonal skills.

"A key outcome for the learning corner is to help children gain self-confidence through experiential learning in preparation for kindergarten and school," said Faye Cormick, President of the Woodend Playgroup Committee.

"A big thank you to Telstra employee, Colin Bruhn and Committee member Deb Hicks, who submitted the application on behalf of Woodend Playgroup," added Faye.

Initiated by Telstra Employees, Telstra's Kids Fund has distributed over \$8.3 million since 2002, supporting more than 7,200 community projects across Australia. It has improved facilities, programs and equipment for the benefit of local children and young people around Australia.

In other great news, the Woodend Lions Club has donated \$1,000 to Woodend Playgroup in acknowledgement of its efforts over the last 12 months and, of course, the untimely break-in.

In addition, they have also committed to providing a fire-proof Chubb security filing cabinet for Woodend Playgroup in the event it needs to securely store anything in future.

Speaking about the Woodend Lions Club's community scheme, Faye Cormick expressed her appreciation to the Club.

"What a wonderful group of people who work tirelessly to serve our community. We were absolutely thrilled with the donation, which will be put towards bathroom renovations to improve access for our little members today and tomorrow," said Faye.

Woodend Playgroup is planning a cake stall at the Woodend Newsagency on election day (Saturday 7 September) and the Pre-Loved Pop-Up Market is back by popular demand and will make its appearance at Woodend Playgroup's Forest Street location on Saturday 5 October.

Members of the community interested in more information or those who would like to join Woodend Playgroup can call 0467 093 878, make an enquiry via Facebook or email WoodendPlaygroup@gmail.com

Submitted by Laurissa Mailler

ENJOY YOUR PRECIOUS WEEKENDS



we're back!

TERRY'S GROUND CREW

**All mowing & garden
maintenance**

Plus - new services -

**Dingo Mini Digger
& Tip Truck**

***Macedon Ranges vouchers accepted*

0400 909 303



TOWN & COUNTRY

Woodend Produce Store

31 Brooke St, Woodend

03 5427 2753 ELGAS

*Poultry, Stock & Horse Feeds,
Hay, Grain, Chaff, Pet Food,
Fencing, Pine Sleepers & Poles,
Concrete, Electric Fencing,
Tanks, Oils & Lubes
Irrigation, Garden Tools,
Potting Mix, Pea Straw, Fertilizer,
Herbicides & Much More!
Elgas LPG Deliveries
We fill BBQ Gas Bottles*

Come in and see what we've got!

Open 7 days

Monday- Friday 8.30 - 5.30

Saturday 8.30 - 4.00

Sunday 9.30 - 2.00

View current and back issues of The New Woodend Star at www.woodendstar.org.au



THE Anglican Parish of Woodend

Farewell Father Malcolm

Anglican parishioners from Woodend and Trentham will farewell their Rector, Fr Malcolm Thomas on Sunday, 15 September 2013 on his retirement.

Fr Malcolm thanks all who have supported him in his ministry in this parish, and appreciates the friendliness of the local shopkeepers who have also been very supportive!

Fr Malcolm said that the highlight of his tenure was the building of The Norma Richardson Hall after 6 years without any facility.

“Our new hall has really changed the way we meet as a congregation: it has opened up the social opportunities and helped build links to the wider community,” he commented.

After completing his HSC at Melbourne Grammar, Fr Malcolm joined the Bank of NSW (now Westpac) in Melbourne. On an overseas trip to Europe, he decided that he would follow in his father’s and grandfather’s footsteps and become a priest. He studied at St Barnabas’ Theological College, Adelaide and was ordained in 1980. Most of his ministry has been based in Melbourne, until moving to Coleraine, Casterton & Balmoral parish in SW Victoria for 6 years before coming to Woodend.

Fr Malcolm will move to Creswick, near Ballarat, with his cat Alexina and Maltese dog, Holly, also a regular churchgoer accustomed to peering down at the congregation from the Bishop’s chair!

Diary date: Spring Fair

This year’s Spring Fair will be held on Saturday 16 November in the church grounds and The Norma Richardson Hall at 15 Buckland Street. Activities planned include, animal farm, face painting, raffle, Devonshire teas, BBQ, live music, plant stall, cake competition, jumping castle and lots lots more. A great day out for the whole family.

Services

Regular services are held at St Mary’s Anglican Church on Sundays at 10.30am and Wednesdays at 10am. Whether you’re new to Woodend or just visiting please come and join us and stay for a cuppa afterwards. St Mary’s is located at 15 Buckland Street, Woodend. Contact: The Rev’d Malcolm Thomas 5427 2460

You can keep up to date via www.woodendanglican.org.au, on Facebook - Woodend Anglican or contact us by email woodendanglican@gmail.com

Submitted by St Mary’s Anglican Church Committee



When you shop with a local business
YOU SUPPORT LOCAL JOBS

Carlsruhe Community Corner

Carlsruhe Community Planning Group:

The building of the BBQ shelter and the toilet is complete as are the paths connecting the BBQ area and the playground area. A meeting of the Planning Group will be held soon to commence planning for the opening celebrations of the area. More information will be provided as soon as details are completed.

Carlsruhe History:

Just a reminder that there are plans to write a comprehensive history of Carlsruhe from its establishment to the present day. It would be very helpful if anyone has photos, family history or other documents that they would be happy to scan or copy and send to Margaret at margaret.glen1@bigpond.com

Landcare meeting

Landcare Group meeting is on Tuesday the 10th of September at 7.30 pm. Anyone interested in being involved please come along to the meeting.

Anyone looking for information on the above groups, please email us on carlsruheccpg@hotmail.com

Submitted by Margaret Glenn

ADVANCED TREE SALES

Trees grown in air pruning pots, 2-3m high
100 + species available

Weekends 21st September – 17th November
Saturday 9-5 & Sunday 9-2 or by appointment

609 Spring Hill-Tylden Road, Spring Hill

Melways Ref: X909 E9 (Between Woodend & Daylesford)

Nick & Carrie: 0422 736 165

www.ancientnatives.com.au

Delivery & EFTPOS available

See website for list & directions



Macedon Ranges Family Law

New family law

practice in Gisborne
All areas of family law,
separation, divorce, property
settlements, care of children,
maintenance etc

Come find out where you stand with a **free** initial
appointment

Phone: 5428 8344 email: megan@macedonrangesfamilylaw.com.au

13 Goode St, Gisborne 3437

www.macedonrangesfamilylaw.com.au

WOODEND NURSERY

“LOCAL KNOWLEDGE FOR LOCAL CONDITIONS”

36 URQUHART ST, WOODEND

5427 1866

Full range of plants, seedlings
& gardening accessories
open 7 days

Australian Decorative & Fine Arts Society

On the house

If you have ever considered joining ADFAS, now is the perfect time to come along for a free preview.

Our last lecture of the year is on Thursday 3rd of October, and will take a light-hearted look at all the hype surrounding modern art 'isms'. So if you have ever wondered what Fauvism, Surrealism Symbolism and all the rest are really about, come along to the Kyneton Town Hall at 7.30pm to hear UK speaker Linda Collins explain. She might even have a shot at making sense of the trickiest of them all, the infamous Post-modernism.

As an added bonus to the evening, entry will be free to all those who take out a new subscription to ADFAS Central Victoria for 2014.

You are warmly invited to come along to find out what ADFAS is all about. You won't be disappointed.

For further information or to register for the 3 October please call Caroline on 0424 668 053 / 5422 3293

Submitted by C Boehm

Woodend Bookkeeping

Registered BAS Agent | MYOB Professional Partner

For all your bookkeeping/administration needs

ATO electronic BAS lodgement

Paperwork ready for your Accountant to lodge your tax return

Dianne Adams P 5427 2233 M 0416 011 227
E di@woodendbookkeeping.com.au



BUDA

Historic HOME & GARDEN

Plant Nursery
Function Hire
Talks & Tours
Exhibitions
Events

www.budacastlemaine.org

Tel: 03) 5472-1032



CLARITY
Integrated technology services

- Business / home networking
- Home Audio/video
- Broadband wireless
- Hardware sourcing & evaluation

Ian Templeton | 0419 556 140

2ND Woodend Scouts reach new heights!

It all started on the Wednesday before camp, with all of our budding climbers going to Gisborne Scout Hall for a safety briefing and knot-tying instruction. As we drove to the hall we all thought "how boring - more knots!" How wrong we were! We learnt how to fit our harnesses and tie new knots. Then we got to try out the belaying system on one of the Venturers from Gisborne, with a rope hanging from their roof.



We drove to Mt. Stapleton in the Grampians on Friday night, stopping on the way for "important camping food" (Macca's). Arriving about 10.30pm in the rain, we quickly set up camp and then hopped into our warm cosy sleeping bags about midnight, talking a bit longer until we fell asleep.

The next morning we had breakfast, fitted our harness and helmet, and headed down to the rock climbing wall. There were 8 different grades of climbs all set up, ready to go. The day could not have been better. It didn't look too challenging until you took your first couple of steps up the wall, then it was a bit daunting. But the rock climbing team talked us through the climb and before we knew it we were half-way up the wall. They even managed to get the most nervous scouts climbing like spider-kids.

We all learnt how to climb, belay and operate the prussic safety system. Every scout agreed this was a fantastic adrenalin-rushing day, and we could not thank the climbing team enough. On Sunday we finished our weekend camp by hiking around the local area and seeing all the spectacular scenery the Grampians had to offer.

Written by Lachlan Sutton, a scout at 2nd Woodend Scout Group

Rock-climbing is one of the many exciting adventures that 2nd Woodend scouts do. Over the last year we have gone caving, scuba-diving, flying, canoeing, welding and hiking. If you'd like to be part of the adventure, call Andrew Johnson on 0400 616 393 for more information.

Submitted by A. Johnson



**WOODEND & DISTRICT
PODIATRY**

John F. Shapland

Resident Practitioner

Reg. Department Veteran's Affairs

5427 2064

Business and After Hours

1895 Mt. Macedon Rd., Woodend

This page is proudly sponsored by the 19th HOLE SHOPPING CENTRE



September

- 2 Brown Paper Bag Short Film & Photography Festival
- 7 Woodend Playgroup Cake Stall @ Newsagency,
- 7 Woodend Farmers Market & Landcare FREE Native plant stall
- 7 Woodend Community Permaculture Garden Spring session
- 10 Carlsruhe Landcare meeting
- 11 Macedon Ranges Film Society – Film Night
- 14 Kyneton Farmers Market
- 15 Resonance String Orchestra - Back to Baroque
- 15 CFA Fundraiser featuring Cantorion Cymreig Victoria Welsh Choir Welsh Choir
- 20 Kindergym – Carnival Day Buffalo Stadium
- 21 Riddles Creek Farmers Market
- 21 Vegetarian Food Forum – Woodend Neighbourhood House
- 21 Friends of Hanging Rock – Bird identification walk
- 27 Macedon Ranges Rural Australians for Refugees – Film Night
- 28 Lancefield Farmers Market
- 28 Duneira - Concert & lecture

October

- 5 Woodend Playgroup Pre-Loved Pop-Up Market
- 5–6 Woodend Art Group Spring Art Show
- 11–26 Kyneton Theatre Company - RENT
- 12 Woodend Wine Store - A Grand Tasting
- 20 Romsey Region Women's Network – High Tea
- 26 Duneira Concert - see www.duneira.com.au
- 27 Craft Market Hanging Rock

November

- 2 Duneira- Seraphim Trio perform music by Haydn & Beethoven
- 3 Duneira- special open garden with heritage car & Flynn Silver exhibition
- 3 Duneira- Bushwalk of Mt Macedon with Stephen Ryan
- 16 Woodend Anglican Spring Fete at St Mary's
- 24 Giborne/Ballararat Sigers- "Elijah"- St Ambrose
- 30 Duneira- Bushwalk with Stephen Ryan. Concert, Childrens Theatre, lecture. Go to www.duneira.com.au for more info

December

- 14 Duneira Christmas carols in the garden with Ensemble Gombert 5pm. BYO picnic rug.

February

- 28 Kyneton Music Festival & Beard Fest Till March 2

March

- 1&2 Lancefield & Macedon Ranges Relay for Life
- 15 Woodend Autumn Carnival – hosted by St Ambrose School and Parish
- 23 Woodend & District Heritage Society – Dedication Ceremony

COMMUNITY GROUPS CONTACT DETAILS

- Alcoholics Anonymous, Friday night, Cobaw Community Centre, 0409 131 144
- Australian Breastfeeding Association, Heather, 5427 2398
- Cobaw Thursday Walking Group 5427 3340
- Daylight Masonic Lodge, 5427 2480
- 1st Woodend Scout Group, 5427 2848, Leisa 0429 331 695
- Friends of Macedon Ranges Library, Sheila/Don 5427 3644
- Garden Club, 5422 6062 / 5427 3340
- Kyneton Municipal Band, Doug, 0411 420 113
- Lancefield-Macedon Ranges, Relay For Life, Kathy 0419 644 688
- Living Word Christian Church, 5429 6327
- Historical Society, Courthouse, 5427 2523
- Macedon Ranges Art Trail Nadine 0439 399 838
- Macedon Ranges & District Motor Club, 10 Webb Cres, New Gisborne 1st Wednesday each month 8pm
- Macedon Ranges Amateur Radio Club Graeme 0418 838 300
- Macedon Ranges Animal Aid, Buffalo Sports Stadium, 5427 1752
- Macedon Ranges Bridge Club, 5420 7595
- Macedon Ranges Families of Children with Disabilities Support Group, 5427 3365
- Macedon Ranges Residents Assc., 5427 1481 or 5427 2651
- Macedon Ranges Photographic Society, Ron Mathews, 5427 3284
- Parent Support 4 LD,- Kerrie 0414 432 158
- Probus, 5427 2003
- R.S.L., Anslow Street, 5427 3122
- Red Cross, 5427 1260
- Rotary Club of Woodend, meetings weekly at Vic Hotel Thursdays 6.45pm, Brendan 5422 6442
- St. Mary's Guild, 11am, 4th Wednesday of month
- St. Mary's Street Stall, 9-12 noon outside Woodend Newsagency (2nd Sat of the month)
- Woodend Art Group, Railway Station, 5427 1659
- Woodend Business & Tourism Group woodendtraders@gmail.com
- Woodend Landcare: Meetings and weekend working bees - Jo 5427 1909
- Thursday Crew - morning - Stewart 5427 4615
- Woodend Hanging Rock Petanque Club, Hanging Rock Reserve, 5427 2477
- Woodend Lions Club, Meetings 2nd/4th Wednesday each month, Barry McDonald, 5427 1272
- Woodend Neighbourhood House, 47 Forest St, 5427 1845
- Woodend Pony Club, 5427 2793
- Woodend Senior Citizens Club, Comm. Centre
- Woodend SES Training Nights Monday, Urquhart St
- Woodend Tennis Club Laura 0408 881 763
- Woodend Winter Arts Festival Inc., info@wwaf.org.au

Ian Marks Liquor
8554 0540

Blue Orange Concepts: homeware
5427 4500

Woodend Pizza & Pasta
5427 3777

Coles Supermarket
5427 2377

**Collier Office & Business Assist
and Woodend Copy Centre**
5427 3092

Pets Haven
5427 3603

Mitre-10 Woodend Hardware
5427 2314

BP Woodend
5427 2248

Target Country
5427 4366

Macedon Ranges Travel Services
5427 4777

Kosmac & Clemens: optometrists
5427 4577

**Alissa Kate
Skin, Body, Beauty, Hair**
5427 3822

Salvation Army Family Store
5427 4421

Loose Change Bargains
5427 4466

Bodywise Underwear
1300 66 17 66

Australia Post
5427 2600

Feeling Framed
5427 4455

The Spa Beauty Therapy Centre
5427 3322

HIGH STREET SHOPS

Color Me Cooper
5427 1454

Chelleon For Hair
5427 3246

RT Edgar Real Estate
5427 1222

Woodend Bakery Cafe
5427 3434



Landcare LIFE

LIFE – Landcare Is For Everyone is the slogan for Landcare nationally. During Landcare week 2–7 September events are taking place around the country.

Woodend Landcare will be providing spring gardening advice, inviting you to visit their stand at the Woodend Farmers Market on Saturday 7 September to collect your FREE native plant.

“We receive quite a few calls and emails from locals asking for advice on what plants grow well in Woodend, so we thought that a spring plant stall would appeal to our community,” said new president Kate Daniel.

Woodend Landcare will be on hand at the Farmers Market from 9am to 1pm and have around 250 plants to give away, including native lily, acacia and eucalypt.

We’ve been busy providing on-ground works, as well as local knowledge recently. We’re proud to say that Landcare has been working closely with Rotary to clear woody vegetation around the new exercise track at Buffalo stadium, as well as doing mowing and mulching maintenance around exercise points along the route. The track is already a great community asset, busy with joggers, families and dog-walkers most days.

If you’re new to Woodend and are interested in getting involved with Woodend Landcare you can sign up to our blog site at www.woodendlandcare.wordpress.com You’ll receive an email when we publish something new. The blog site also provides a handy list of indigenous plants if you are planning plantings for the spring.

Submitted by Angela Van Dam



Kindergym at Buffalo Stadium

Come along to Carnival Day

Kindergym is holding its term 3 special theme ‘Carnival’ day on Friday 20 September, 10am–11:30am at the Buffalo Sports Stadium in Woodend.

Bring the kids for face painting, juggling, balloons, music and more performed by “Pass the Parcel”. There will be loads of laughter and fun to be had on the day.

Kids love Kindergym

Kindergym is a physical and social development program for children ages 1–5 years. IT develops children’s gross motor skills, coordination, balance and social skills.

The program is offered weekly at Buffalo Sports Stadium in Woodend. Friday Session times: 10–11am for 1-3 years and am–12 noon for 3-5 years. Cost is \$9.20 per casual visit, or purchase a 10 pass card valid for 6 months for \$85.

Great times and friendships are made at Kindergym!

Buffalo Sports Stadium is managed by Macedon Ranges Shire Council. For more information, contact us on 5427 3411 or buffalo@mrc.vic.gov.au.

Submitted by G. Gamble for MRSC

Kyneton Theatre Company presents



This world wide hit was written and composed by Jonathan Larson and based on Puccini’s opera “La Boheme”.

The musical depicts “young artists struggling to celebrate life in the shadow of drugs, poverty and AIDS.” Larson’s score blends pop, dance, salsa, rhythm and blues, gospel and rock. RENT has had a huge following since 1996.

Kyneton Theatre Co’s production of RENT is directed and choreographed by Melanie Burlak, assisted by Don White, with Music Direction by Kate Taylor.

The role of “ANGEL” is played by Ryan Ireland aged 23. Ryan started in theatre at the age of 10. He attended Stagecoach weekend school for 5 years, delving into Jazz, Tap and Contemporary dance. At 18 Ryan specialised in Contemporary dance. In 2008 he performed on the West End as part of the Youth Dance England Festival.

In Australia Ryan did a Music Theatre course at the University of Ballarat Arts Academy, where he attended for 3 years graduating in 2011. Ryan’s looking forward to the challenging role of Angel. We wish him every success.

Staged at Kyneton Secondary College, the show commences on 11th October, finishing on the 26th. Tickets are available now, to see session times and to book tickets go to www.trybooking.com/DFYO or phone Olivia Kelly 5427 4210.

Submitted by F Kelly



Top Hat Productions

- * 8 mm / 16 mm Film to DVD
- * VHS/Mini DV/ Hi 8 to DVD
- * Filming/Editing Services
- * Corporate & Special Events Productions

AVPA Multi -Award Winners
Accredited Producers



PH: 03 5422 3930

KYNETON EQUIPMENT & PARTY HIRE

FOR ALL YOUR HIRING NEEDS
8-12 BEAUCHAMP ST PHONE (03) 5422 2311
KYNETON VIC 3444 FAX (03) 5422 2930

Email: kynhire@bigpond.net.au
website: www.kynetonhire.com.au

Montessori Pre School

Do you have trouble getting your children out of the house and doing activities outside? An exciting activity that has been happening at the Montessori Pre-School is gardening with Phe. We have been fortunate that Phe, a parent of our students has a love of gardening. She has been happy to spend time with the children outside raking, planting and general exploring of our yard. Do your children love cooking? We have also been fortunate that another parent Johanna spent time with the children cooking a chocolate zucchini cake. This was a delicious activity enjoyed by all children.

Would you like to come and visit our centre? Would you like to find out more about what Montessori means? Please call 54286376 to book into our next Thursday afternoon tour. We are still taking enrolments for our Early Learning program and direct entry 4 year old program for 2014.

Submitted by Sally Jackson



61 Main Rd, Riddells Creek
5428 6376
www.macedonrangesmontessori.com.au

4 Year Old Kindergarten 2014 Direct Entry - Lower Fees

Thursday afternoon tours
call to book a place



Woodend Library

E-Books at the library

Goldfields libraries now have access to almost 2,000 new and popular ebooks through our 'BorrowBox' service.

Our ebooks will work on any ereader (or computer) except for Kindle ereaders. You can access BorrowBox books directly through our website on a computer, or if you have a tablet or smart phone that works too! All you need to do is download the BorrowBox app, tell it which library system you are from (Goldfields Libraries) and sign in with your normal card details.

You can borrow ebooks for two weeks at a time and renew them if you have borrowed a book that was a bit longer than you expected. BorrowBox will remember which page you were up to, allow you to reserve books to read later and even suggest featured books to try.


You can also download about 800 different audio books.

Both the ebooks and audio books are added to regularly, so it's worth checking back every now and again to see if something new appeals. Books range across genre and age-range. We have crime, biographies, romance and more! We have Young Adult and kid's stories. Whatever you read, BorrowBox should have something you'll love.


More details can be found on our website ncgrl.vic.gov.au in the 'E-Library' tab.

Thanks to the Woodend community for contributing to our Community Art Project. We certainly 'warmed up Woodend'!

Submitted by Stuart Winser and Lulu Cockram



TOYS



IN WOODEND

"CARASMATIC"

100 HIGH STREET, WOODEND, - PH 5427 3766

LEGO

SYLVANIAN FAMILIES

SCHLEICH

RAVENSBURGER JIGSAWS

FRICTION CARS

GOLLIES - DOLLIES - TEDDIES

LAYBY AVAILABLE

LIKE US ON FACEBOOK

CENTRAL VICTORIAN TIMBER

- Sleepers •
- Treated Pine •
- Posts •
- Hardwood •
- Plaster •
- Doors •
- Redgum Firewood •

Specialists in house
lots and extensions

Phone: 5427 1090

Email centralvictimber@bigpond.com

Monday to Friday 8am - 5pm Saturday 9am-12pm

988 Blackforest Drive Woodend (Old Sawmill Site)

SPECIALS NIGHTS

MONDAY & THURSDAY | TUESDAY & FRIDAY
PARMA NIGHT \$16 | **SEAFOOD NIGHT \$16**

With hot drink or soft drink

ALL WEEK
SENIORS MENU * \$16

2 Course meal deal
with soup/dessert & hot drink or soft drink

Come in and see our other specials



bp Carlsruhe Roadhouse
371 COBB & CO ROAD,
CARLSRUHE VIC - 3442
TEL : 03 5422 1848



Samantha Moore
0438 062 143

Awaken the goddess within®



**with Eye of Horus
latest makeup looks
and trends for
spring**

A workshop on Day & Night time looks, with special guest Makeup Artist - Kelly Garner.

Door Prize | Amazing Deals | Free look book
Champagne and canapes

Tuesday 17th September, 6pm - 8.30pm
@ Schatzi's Cafe, 111 High Street Woodend

A \$45 deposit secures your place, redeemable on Eye of Horus products purchased on the night.

RSVP to Samantha by 3rd September, **0438 062 143**

Film society looks back

A year of films at the Macedon Ranges Film Society would be incomplete without something by that masterful film director, Alfred Hitchcock. In August, the film was Rear Window. It explores not only the notion of what to do if you suspect a crime has been committed, but also the fine line between righteous investigation and voyeurism.

Hitchcock dallies ably with these two ideas, demonstrating the conflict between them yet pushing us further into the mystery with his usual blend of suspense and drama, employing his signature cinematographic style, choice of main characters and evocative music. James Stewart plays "Jeff" Jefferies who is assisted in his venture to solve the mystery by his girlfriend, Lisa Fremont, played by Grace Kelly, looking gorgeous in a range of outfits designed by Edith Head.

On Wednesday, 11th September, the film society continues in its efforts to show films of a broad genre. Four short films will make up the September screening, beginning with Adam Elliot's Harvie Krumpet, an Australian clay animation featuring the voices of Geoffrey Rush and Kamahl. In 2003, this won the Academy Award for Animated Short Film.

This will be followed by three short films by New Zealand-born director, Jane Campion. This is a departure from the normal format of screening one film only although the viewing time adds up to be roughly similar to that of one feature.

The Macedon Ranges Film Society meets on the second Wednesday of every month at 7 p.m. in the Woodend Community Centre. Film notes are provided and for those who wish, there is supper kindly supplied by our members, following the screening. Email mrffilmsociety@gmail.com or call Christine on 5429 5452 or Lorraine on 5427 0921.

Submitted by Christine Caley

Red Cross

The next meeting of the Woodend Unit of Red Cross will be held on Thursday 5th September at 1.30pm. We meet at 39 High Street Woodend. All new members will be made very welcome.



Submitted by M. Hocking

Meta Massage

SPORTS/REMEDIAL MASSAGE, SHIATSU, REIKI
Raymond White

Telephone 0411 268 336

for an appointment

18 years experience • Chronic and acute conditions
Sports injuries • Rehab work

- ♥ AMMONIA FREE COLOURS
- ♥ LADIES HAIR DRESSING
- ♥ MEN'S HAIRDRESSING
- ♥ STUDENTS & CHILDREN'S HAIRDRESSING
- ♥ MAKE UP ARTISTRY
- ♥ HAIR EXTENSIONS
- ♥ BEAUTY THERAPY
- ♥ WAXING
- ♥ EYEBROW AND LASH TINTING
- ♥ HAIR STYLING
- ♥ BLOW WAVE
- ♥ HAIR UP'S
- ♥ PEELS
- ♥ IPL
- ♥ INJECTABLES
- ♥ LASER
- ♥ MICRODERMABRASION
- ♥ EYE BROW THREADING
- ♥ DERMAL ROLLING
- ♥ SKIN REJUVENATION
- ♥ EYE LASH EXTENSIONS
- ♥ SUGARING AVAILABLE LATE SEPTEMBER
- ♥ NON SURGICAL FACE LIFT
- ♥ FAT CAVITATION
- ♥ FORMOSTAR
- ♥ BLOW WAVE BAR
- ♥ SPREAY TANNING
- ♥ MASSAGING PEDI SPA CHAIR
- ♥ ACRYLIC NAILS
- ♥ FACIALS
- ♥ ANIT AGING TREATMENTS
- ♥ WEIGHT LOSS TREATMENTS
- ♥ MANICURE AND PEDICURES
- ♥ CONSULTATION ROOMS FOR MELBOURNE FACE PLACE

DR DANIEL LANZER (MBBS FACD)
DERMATOLOGIST/ COSMETIC SURGEON
JO EVANS (BN)



GRAND OPENING CELEBRATION DAY THURSDAY 19TH SEPTEMBER

Do you want to see the salons renovations? Well the 19th September is the day!!! To celebrate our move we are having a grand opening day. We will be having promotions and packages that are only available on the day.

There will be door prizes to be won and gift packs given away. We will be having Ask the Experts for Hair Colour, Skin Consultations, Make up and Free consultations with nurse Jo from Melbourne Face Place. Bookings are essential as there are limited appointments available.

OPEN DAY SPECIALS

Hi Gloss Semi Package

- Signature Style Cut
- Blow dry and Style
- FREE Professional Consultation
- FREE High Gloss Semi Colour

Only \$65 – Valued at \$179

only 11 packages available on the day

VIP MAKE UP

- Make up consultation
 - Make up lesson
 - Make up Application
- Valued at \$95**

Only \$30 to secure your booking – Redeemable on products brought on the day
only 9 packages available – Be Quick

Eye Make Over

- Eyebrow Design Consultation
- Eyebrow Styling
- FREE Collagen Eye Treatments
- FREE Eyebrow Tint
- FREE Eye lash Tint
- FREE relaxing Hand Massage

Only \$39 – Valued at \$179

only 13 packages available on the day

Professional Skin Analysis

- Skin Analysis
- Detailed Consultation
- FREE Pomegranate Enzyme Peel
- FREE Scalp Massage

Only \$30 to secure your booking – Redeemable on products brought on the day
Valued at \$95
only 9 packages available – Be Quick



- Free Consultations
- Free IPL Patch Test
- Customised Packages Available
- Under Arm IPL Hair Removal \$50 save \$30
- Skin Rejuvenation \$150

SShhhh ask about our special Anti Wrinkle Treatments ...

- LIPOSUCTION
- LIPOSCULPTURE
- BLEPHAROPLASTY
- SUTURE LIFT
- FAT BANK STEM
- CELL TRANSFER
- LASER RESURFACING
- INJECTABLE TREATMENTS
- DERMAL FILLER
- MUSCLE RELAXANTS
- LASER/IPL TREATMENTS
- PHOTO REJUVENATION
- HAIR REDUCTION
- SKIN TREATMENTS
- GLYCOLIC PEELS
- DERMAPEN SKINCARE

MELBOURNE
FACE PLACE

M: +61 416 970 534 T: +61 3 5427 3822 E: info@melbournefaceplace.com
www.melbournefaceplace.com * www.drlanzer.com

FREE COSMETIC CONSULTATION FOR DR. LANZER

Ultrasound Fat Reduction Got a **BUDGE** that wont **BUDGE?**

BLAST Your Fat Cells away with ultrasound

Tighten FLABBY SKIN with RF fat melting
Ultrasonic cavitation, Safer alternative to liposuction

Lose centimetres in one treatment
Instant results, no down time, pain free



SPECIALS

Tummy \$129 save \$166
Thighs \$159 save \$136
Arms \$99 save \$196

Hurry only 7 packages Available



Non Surgical Face Lift
Immediately Tightens the Skin
Improves Skin Tone
Stimulate new Collagen
A reduction in the appearance
of double chins.

ONLY \$149 Valued at \$499

Non Surgical Face Lift
Free Lactic Peel
Free Micro Dermabrasion
Hurry only 5 available per month

Introducing **FORMOSTAR**
INTRO SPECIAL ONLY \$79
HELPS WITH:

Weight and centimetre loss
Increased Blood Circulation
Improved Skin Condition
Burns up to 1200 calories

Detoxification
Pain Relief
Sports Recovery

Well being and more...



We Have Moved... New Address 15/130 High Street Woodend

03 5427 3822

www.beauty-salon-woodend.com.au

alissa@alissakatesalon.com

Western Water offers community grants

Western Water is urging community and environmental groups in the region to apply for up to \$2000 in funding under its grants program.

There are two types of grants available – Sammy's community garden grants for sustainable community gardens, and Frances' environment grants for projects to improve biodiversity and liveability.

Sammy grants, named for Western Water's slithering mascot Sammy Snake, are aimed at garden projects with education and health benefits for the community.

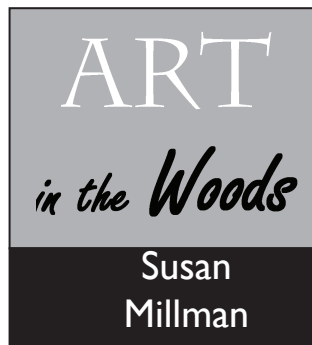
Not-for-profit groups can apply for a grant to pay for plants, equipment or watering systems. In-kind support such as labour is also on offer.

Environment groups applying for Frances grants must demonstrate that their project will enhance biodiversity, protect flora and fauna or provide educational benefits.

All projects must take place within Western Water's service area. The grants are part of Western Water's Corporate Social Responsibility program, which aims to give back to the community.

For more information and eligibility criteria, go to WesternWater.com.au or call 9218 5455. Entries must be in by September 20 (Sammy grants) or September 27 (Frances grants) and winners will be announced in late October.

Submitted by K Smith for Western Water



Artistic inspiration is frequently derived from natural and spiritual worlds. Susan Millman, however, goes into a creative spin around bits of steel. Give her a disused bike chain, plough discs or ball bearings and her imagination ignites.

Susan moved to Woodend in 2007 seeking community and a country lifestyle.

Her foray into Susan's Salvaged Sculptures followed the completion of a welding certificate and saw her realise a dream to weld a seahorse sculpture out of discarded forklift chain.

The metre-high seahorse, finished in October 2012, was exhibited alongside works from established artists at Outdoor Art in Kyneton (OAK). It later found a home in coastal south-west Victoria.

This year has been a major turning point for Susan, who left a long-term career in the airfreight industry to focus on her art. In February she participated in the REVIVE sustainable art exhibition at Woodend's Bakery Lane Gallery, then two months later achieved a five-year goal in presenting at Artanica, Macedon.

Two shapes that have dominated her work so far are the heart, representing love and courage, and the five-pointed star, representing hope and faith.

Sporting a new red and silver welding helmet, the joy is palpable as she makes sparks fly in her garden shed with Roger the Jack Russell at her side.

ART in the Woods features Woodend residents participating in the 2013 Macedon Ranges Art Trail. All studios are open year round by appointment. Pick up a brochure at the Woodend Visitor Information Centre or download a copy for locations and information at: visitmacedonranges.com/arts-culture

Submitted by Nadine Hartnett



WE ARE ON THE MOVE

To meet the needs of our expanding business Langley McKimmie are moving premises on Friday 6 September 2013

New office details are:

**17 Nicholson Street
Woodend
Tel: 03 5427 8100 (new)
Fax: 03 5427 3793**

Please note we will have limited access to office phones and emails on the day of the move, however it will be business as usual on Monday 9 September 2013.

Langley|McKimmie
Chartered Accountants
www.langleymckimmie.com.au E: info@lmadvisors.com.au



Local support from Aussie Homes Loans

Woodend resident Sion Orritt is a fully accredited mobile mortgage broker with Aussie Home Loans and being local is able to offer quick, reliable solutions for any home loan or refinance requirement.

Aussie Homes Loans is Australia's leading mortgage broking business, having been awarded Australian Mortgage Broker of the year for 6 consecutive years. Best of all, you can be secure in the knowledge that you are dealing with a reputable company that has been a consumer champion for over 2 decades.

As Sion says, "It really is smart to ask Aussie. For a home purchase or refinance I compare the best loans from all of Aussies lending panel, saving you the time and effort of doing it yourself.

When I do this comparison for my clients, it's clear that most people are surprised at how many better options there are in the market than they may just get from their bank. With so many loan products and lenders available, its little wonder that it can be confusing, not to mention time consuming. As an accredited Aussie home loan specialist my knowledge enables the client to make this decision simple and time effective, and at no charge for my services".

With Aussie, clients have access to a panel of 17 quality lenders, which allows you to select the right loan solution for your current and future needs and lifestyle requirements.

Sion is contactable on 0498 498898 or sion.orritt@aussie.com.au.

Submitted by Sion Orritt

Would your bank tell you if a competitor had a better home loan?

Sion Orritt will.

Call Sion Orritt
your local Aussie Broker
0498 498 898
sion.orritt@aussie.com.au

It's Smart to Ask



When you shop with a local business

YOU ENCOURAGE COMMUNITY

ON TIME!!!

Tired of being late for your appointments?

Sun-Ranges Hire Cars

can look after all your travel needs, with Prompt & Personal door to door service for less than you think

Airport Transfers – Business & Corporate Travel – Weddings & Special Occasions – Sporting Events – Theatre Nights

Phone 0468 347742

The ageing Agents boots

Sitting with Dad, a retired stock and station agent auctioneer and farmer, I noticed his beautiful soft RM Williams boots by the bed and was immediately transported to the back step of our big old weatherboard house. He passed away last month.

The well-worn brown leather boots, always covered in mud and manure, need to be cleaned. It's a simple job and is usually relegated to the youngest capable child.

Cattle sales on Friday, Sheep every second Monday. The boots are left on the back verandah, just by the bottom step – always to the left. The phone starts ringing at 6pm as truckies, farmers and agents complete their business. Dinner goes cold in the oven while it's sorted.

The basis of the boot cleaners toolkit includes newspaper spread on the verandah below the bottom step, a damp rag, nugget, and a specially designated old bone handled bread and butter knife. The only companion on this lonesome task is Rover, the faithful Kelpie. He knows to scarper when the boots are banged together to loosen the mud. He's only just cleaned the same mud from his own paws.

Awaiting dinner, he may as well share this moment while the poop is scooped from the sole, the mud scraped from the sides, and the whole lot wiped clean with the damp cloth. With one hand against the warm soft interior leather, replenishing brown nugget is smeared thick with a brush. Rubbed into the cracks it is brushed to a shine then finished with a polishing cloth. The boots wait by the bottom step for the following morning, and are always pulled on in a hurry.

They are never replaced outright. They're sort of phased out. A new pair appears but they're just for the office where they will slowly soften and the creases will find their place. How many pair of boots have passed through in a working life? When will he stop wearing them?

When his weakening legs have only the strength to carry slippers, and Rover has grown whiskers.

Written by Kathy Mexted



JIGSAW STAIRCASES

0408 153 124

PO BOX 93 WOODEND 3442
SERVICING BUILDERS AND OWNER
BUILDERS ALL OVER MELBOURNE
AND CENTRAL VICTORIA

WWW.JIGSAWSTAIRCASES.COM.AU

E: JIGSAWSTAIRS@OPTUSNET.COM.AU



Venue Hire

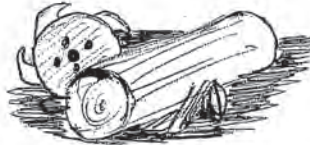
Planning an event or function? Buffalo Sports Stadium, Forest Street, Woodend and Macedon Community Centre, Tony Clarke Reserve, Waterfalls Road, Macedon are available for hire.

Please contact the friendly team on 5427 3411 for more information.

Submitted by S Hughes for MRSC

MADDEN'S PORTABLE SAWMILLING SERVICES & SALES

Turn your unwanted trees & logs into VALUABLE TIMBER



Call Craig on 0410 275 714

Don't Miss – "Case Schrage"

– Coming Soon to Riddells Creek, Romsey & Woodend!
Wild animal tamer – tamed by God!

Motivational speaker Case Schrage travels throughout the world with a powerful, life changing message that is not to be missed.

Case Schrage is a wild animal trainer and has worked with wild animals for 23 years.

- 7 times he has come close to death.
- At one time a 5 – ton killer whale threw him through the air.
- Another time a lion grabbed him by his left arm, yet he survived- because God had a plan for his life!

Case will also be showing a multimedia presentation.

Come along and hear Case on: Saturday September 7th at 7:30pm at Riddells Creek Neighbourhood House.

Sunday 8th September at 10am at Encourage Church 7 Mitchell Court Romsey and 6pm at Woodend Community Centre.

Entry is free with refreshments provided and a free-will love offering will be taken up.

Encourage Church aims to bring world class speakers to our local community so that we can "Encourage one another to be all that we can be in life and in God".

For further details please contact Encourage Church Office 5429 6327.

Submitted by Denise Eddy for Encourage Church

 **bodywise**
UNDERWEAR

www.bodywise.com.au
1300 66 17 66 or 5427 1895
Shop 19, 130 High St, Woodend
next to post office

Wire-free bras, briefs & more... sizes 10 to 30



B5529 B50 B5888

• wire-free • everyday comfort • all ages • maternity • sports • wardrobe basics •

2SCALE
BUILDING DESIGN & DRAFT
RESIDENTIAL BUILDING PLANS

Sketch Design & Planning
Bushfire (BAL) Assessments
Town Planning Permits
Building Permits

KARYN BIANCO  REGISTERED Building Practitioner

0425 723 183
WWW.2Scale.com.au

lawyers & business consultants

noy
legal services

lawyers

- business sales + leases
- conveyancing
- wills + estates
- commercial agreements

5426 3500 • justine@noy.com.au
macedon ranges & melbourne

POLARIS
Financial Services Pty Ltd
www.polarisfp.com.au

"If you are truly prepared, then you are able to feel financially confident"

Talk to Polaris today to see what an **Adviser** can do for you

Anneliese Super, Retirement, Investment & SMSF
Peter Insurances, Life, Income TPD Living & General
Colin Home Loans & Specialist Lending
Gillian Administration

Shop 6 - 38 Brantome St Gisborne 3437
Ph 5420 7373
enquiries@polarisfp.com.au




Polaris Financial Services Pty Ltd ABN 99 131105514
Corporate Authorised Representative & Credit Representative of Securitor Financial Group Pty Ltd
Australian Financial Services Licence & Australian Credit Licence 240687 ABN 48 009189 495



We hope you find our Term Four (Oct-Dec 2013) brochure, inserted in this edition of the Woodend Star, informative and enticing. We have been busy looking for new courses to interest you and, of course, keeping some of the old favourites. Watch out for our new Introduction to Self-Publishing (e-publishing), an exciting new course aimed at the writer who wants to understand the principle stages of e-publishing, develop the basic skills in creative writing for electronic media, editing and proof-reading, graphic design, and marketing, be able to find support for these stages and be able to upload a document onto the major publishing sites.

Our puppetry club for kids is going well (though a few more members wouldn't go astray). Sue Blakey – puppeteer and puppeting mentor – would really like to see the art of puppetry passed on to adults as well. It is still one of the few art practices that is still predominantly passed from mentor to student. Come along and expand your art practice. Our other art classes are still going strong, so if you're looking for something different to do then why not check out our courses?

We are still seeking donations of hand tools, old work benches and storage spaces to assist in establishing a new Community Shed (like a Men's Shed but broader) that we are calling The Woodend Workshop. It's an initiative of the Woodend Neighbourhood House, Rotary Club of Woodend, some dedicated community members and Macedon Ranges Shire Council's Community Partnerships and Youth Services teams. Call us on 5427 1845 to get more information on how you can get involved.

We are looking for more volunteers at the Neighbourhood House. We need front of house, media, marketing, governance and handy people to come along and share their skills. We have a community needs analysis coming up, a community shed on the way and a range of activities that need community help. Drop in and speak to us about how you can help.

Submitted by Jill Scanlon - Coordinator

Welcome to the Woodend Star Kids Club September Birthdays

4th	Holly Mcleish	Turns 13
9th	Jack Turner	Turns 11
16	Lachlan Ormerod	Turns 10
17	Fletcher Cooper	Turns 7
19	Mikeely Lever	Turns 8
21	Jayden Merlo.....	Turns 10
24	Sam Hicks	Turns 3
26	Matilda Rice	Turns 13

Happy Birthday Everyone!

JOIN THE WOODEND STAR KIDS CLUB

Fill in your details below and mail to P.O. Box 387 Woodend
Age limit is 13 years old. Must be a resident of the 3442 postcode

Full name: _____

Address: _____

Date of Birth: _____ Age: _____

Phone: _____

Parent/Guardian

Signature: _____

Sponsored by:



**You can collect your birthday surprise by
visiting Collier Office & Business Assist**



24sevenalarms.com.au

24 Seven Alarms Aust Pty Ltd

- Alarms installed, Serviced and Monitored
- Data cabling and phone line installation
- Medical Alert Systems
- Access Control Systems PSBL: 732-083-90s
- Digital Video Surveillance CCTV packages: domestic and commercial

1800 247 111/ 03 5427 4411
sales@24sevenalarms.com.au

0402 228 286



Pacifique Vue Vanuatu

Luxury Accommodation
www.pacifiquevue.com
Ocean front + FREE rental car



Time To Start Your Pre-Summer Clean Up!

Now that the weather is starting to improve, people are beginning to venture outdoors more often, especially into the garden and other areas on larger properties. So, NOW is the time to start preparing to reduce the risks of fire danger to you, your family and your property.

Why you should clean up

The ferocity of a fire depends on a number of factors, including the weather, ground slope and especially the amount of 'fuel' on and around your house or property.

Fuel is the only factor that you can alter before an unplanned fire starts. Fuel reduction is therefore one of the most important preventions you can undertake, with the most effective methods including mowing, raking, slashing and burning.

Clearing volatile fuels such as grass, undergrowth, fallen leaves, bark, dead branches and twigs will lower the intensity of a fire.

Reduce green and you won't see red!

In grasslands, the intensity of grassfires increases with the height and weight of the grass. Cut the long grass within 30 metres of the house, and then keep it under control. If grass cannot be kept short by grazing animals, it should be slashed well before the fire danger period so that cut grass has time to rot prior to summer.

A well maintained garden will reduce the fire intensity around our house and make it safer for you to stay and defend your home, and put out spot fires started by embers from the main fire.

Make sure all vegetation around the house is pruned, especially any overhanging branches, clear ground around trees from dead undergrowth and fallen branches. If you live on a slope, greater ground clearance is desirable, especially under established trees.

Remove over-hanging branches and clear leaves and twigs from roof gutters— something you should do on a regular basis.

Move wood piles and other flammable materials away from the house. Isolate potential fire sources such as incinerators or rubbish pits.

Be careful burning off

- For small clearing fires, a permit is not needed, however there are still strict guidelines you should be aware of. If a burn escapes due to carelessness and damages someone else's property, you will be held responsible.
- By law the size of pile of material being burned must not exceed 2 cubic metres at any time, and you are meant to have cleared a firebreak of at least 3 metres around a fire, to ensure that the fire can be restricted to a controllable size. The space above the fire should also be free of any flammable material and vegetation.

For further information contact Captain Mick Christie on 0419 870 601 or 1st Lieutenant Mike Dornau on 0409 093 935, call the Woodend CFA on 5427 2356, visit the station in Urquhart Street or our website: www.woodendcfa.org. The Woodend CFA is a volunteer emergency service, committed to Creating a Safer Community.

Submitted by 1st Lieutenant Mike Dornau, Woodend CFA

procure support services
BRIDGING THE GAP IN HEALTHCARE

Our local business offers personalised private mobile healthcare support to assist our clients in maintaining their independence in their own home and community. We are there when family and friends can't be.

Call our highly skilled Nursing Team today to discuss how we can enhance your lifestyle and independence, including health and domestic coordination.

Please refer to our website for a full description of services offered by our experienced team.

Our Services

- **Transport**
– Qualified Nursing assistance to or from hospital, medical or other health appointments, on time, and in comfort. Wheelchair and walker enabled.
- **Social Support**
– assistance to attend shopping, social outings, lunch, movies etc.
- **Patient Advocacy**
– attendance at medical appointments to translate jargon, take notes for family, assist with scripts, pathology and radiology.
- **Personal Nursing and Home Care**
– in your own comfortable surroundings.

procaresupport.com.au
1300 783 765

FOR ALL YOUR BUSINESS NEEDS
Printing
Office products
Administrative services

Winter's dull days getting you down?

Brighten up your office space this spring with these fun & colourful supplies that won't break the bank.

Range includes:
Files & folders
Clip boards
Note books
Binders
Expanding wallets
+ more

Durable, fashionable, fun and bright!
Bring a splash of colour into your office, school or home.

P 5427 3092 E print@collieroffice.com.au
A Shop 5, 130 High Street Woodend

SPORTS NEWS

Play Basketball this summer in Woodend

Summer season runs October to March -Low fees - Training sessions for all junior players - All new players welcome to try before you buy.

The Macedon Ranges Basketball Association offers basketball in Woodend across 12 competition levels from Under 10s through to adults. The MRBA is a professionally run, local sporting club dedicated to providing a fun, inclusive and skillful basketball competition for the Woodend community.

The summer season begins 14 October. Check out our website for the training and game timetable – www.mrba.com.au. Training and games are played in excellent indoor facilities at Buffalo Stadium in Forest Street, Woodend - with access to outdoor courts for some training sessions.

Players are welcome for all age levels – get in touch now so we can include you in the numbers for the summer competition as we are currently preparing timetables.

- Junior competitions for boys and girls are offered across four age groups: Under 10s, Under 13s, Under 15s and Under 18s.
- Women play Sunday nights. Men play Thursday nights. There's also a mid-week daytime Ladies comp and an All Abilities comp on Sundays.

Feeling FRAMED

bringing art to life

Custom picture, artwork, tapestry and memorabilia framing, professionally and economically performed in-house

A comprehensive range of Art supplies at very competitive prices

- Pencil & paint by numbers sets for youngsters
- Artist's quality brush and paint sets for the more experienced
- Matt boards and mounts for artwork presentation
- Books & magazines for the art enthusiast, or those just wanting a good read

43 Anslow Street, Woodend – 5427 4455
Next to the post boxes
feelingframed@bigpond.com

Fees

- Just \$130 for the entire summer season (covers Term 4 2013 and Term 1 2014) with early bird payment discount of \$20 available before 4 November. An annual insurance fee of \$35 is also required.
- Primary age students pay \$110 and register via the Aussie Hoops program to receive a free basketball, bag, reversible training singlet - including insurance cover.
- All junior players' fees cover the cost of games as well as weekly training sessions with experienced trainers.

New players needed for ladies comp

Games on Wednesday mornings at Buffalo Stadium. Fun and very friendly competition. Instruction provided plus tips from umpires. Please call Emma Sambrooks on 0412 558 788.

Submitted by E. Sambrooks and N. Cooper



Do you know how many chemicals your family could be eating?

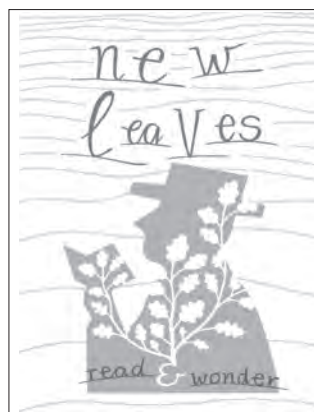
All our fresh produce are Australian grown with no chemical sprays, artificial fertilisers or genetically modified materials.

just as nature intended

Nature's Garden Organic Produce is guaranteed Australian grown and 100% certified organic. Call in and see just how affordable our extensive 100% organic range is at Shop 4A Collier St, Woodend (cnr Anslow St) or call 5427 4406

www.naturesgarden.com.au

Naturally, better products



Over the cold?

Woodend's favourite bookstore stocks a beautiful range of Cook, Knit, Design, Play, Garden or just Disappear-By-The-Fire books. Come in and choose something to warm you.

Tarot Readings now available on Sundays.
Book in store, over the phone or on enquiries@newleaveswoodend.com.au

We welcome Special Orders and Lay-Bys, and Gift Vouchers are available.
Cnr Anslow & Collier Sts, Woodend
5427 3772

SPORTS NEWS

Woodend District Netball Club



Grandfinal Day and Presentation night

The WDNC will hold their Winter Grandfinal day at Buffalo Stadium on Saturday 14th September. With over 100 netballers registered to take part it will certainly be a fun and full day. The day will commence with the Under 11 Round Robin's 4 teams playing it out to win a place in the Grandfinal.

The Net Set Go girls and boys will showcase skills they have learnt under the guidance of Anne-Louise Lindner. Medals and certificates will be presented after the match. Net Set Go program is a program that is run at club level to teach the skills of netball to children between the ages of 5-8. These very keen children will progress to an Under 9 modified game this coming Summer Season.

The under 15 Grandfinal will no doubt be a nail biter, so come down to support all the players, coaches, umpires

and committee. Part of the celebrations of the day will include a "shoot out" across all age levels with the winners receiving a Gilbert netball.

Come 5pm, excited girls and boys will arrive in an array of disco outfits for presentation night and disco. The evening will include best and fairest awards, coach awards and the best players in a Grandfinal awarded.

We thank all our sponsors for their support throughout the year as we would not be able to provide a great netball club without their generosity. Jenny and Phil Boldiston Bricklaying, 19th Hole Shopping Centre, MR Projects, Pearse Earthmoving, RedBeard Bakery, Kerrie's Bundle of Bears, John Cameron Plumbing, Joan Gladman Real Estate, David Garrahan Jigsaw Staircases, Tylden General Store and Riverwood Group. Please support these wonderful local businesses

We look forward to our summer competition which commences on Friday 18th October. On line Registrations are now open, please go to our website to register. This is a great way for players to maintain friendships, form new ones and keep fit and active in a safe and welcoming environment.

Please contact Andrea Norden on 0403 043 222 for or visit our website woodend.netballvic.asn.au

Annual General Meeting

The Annual General Meeting of the Woodend District Netball Club will take place in the meeting room of Cobaw Community Health (Woodend Hub) at 7:30 pm Monday 14th October 2013.

All committee positions will be declared open and we welcome all interested parties to attend the meeting, in particular anyone wishing to join the committee or help out in any capacity.

Please contact Andrea Norden (President) 0403 043 222 for further information

The fencin' fella

- colorbond
- tubular
- timber
- steel picket
- pool

Mini Earthmoving Kanga Loaders

Attachments include:
rotary hoe, soil leveling bar, 4 in 1 bucket, trenchers, post hole diggers, tipper

SHAUN BARRON

MOB: 0407 232 900 or 5422 3488 AH

WARNER'S JEWELLERS

EST. 1912 ~ 4th Generation Jewellers

Manufacturing Jewellers

Jewellery Repairs

Watch & Clock Repairs

Valuations & Rethreading

97 High Street, Woodend

5427 1573

Furniture Upholstery

SCR Upholstery

We offer

- all aspects of upholstery to modern and antique furniture
- free quotes
- free pick up and delivery



Steve - 0419 434 927

www.scrupholstery.hipages.com.au

Quality Blinds at factory direct prices

- Sunscreen/Blockout Blind
- Latest Styles/Fabrics/Colours
- Automated Blinds
- Roller/Roman Blinds/Venetians
- Exterior Awnings
- Professional Installation Team

Ring Now for a Free In House Consultation/Quotation

Mark 0437 759013

Simon 0458 338995

Contemporary Blinds
Where Style is Affordable



Maiaveda Holistic Day Spa

Relax • Restore • Rejuvenate

offering authentic Ayurvedic & holistic therapies for beauty & wellness

Massage, Facials, Body & Healing Treatments

A unique, tailored experience . . . explore something different

Gift Certificates Available

www.maiaveda.com.au

tel. 5422 2730

Upstairs at The Mill, 18 Piper St, Kyneton

Heritage News

Jannysse Williams whose book "Echoes of the Past – a history of Newham and Cobaw" became a best seller, has almost completed work on the history of Woodend and district hotels. This book, which incorporates wonderful illustrations by Joycelyn Moreland, is going to be a real collector's item and all going well, will be ready for sale in plenty of time for Christmas. Every scrap of information about each hotel (believe it or not, over fifty!) has been carefully woven into a fascinating story resulting in a very readable and fascinating look at life in our district over the years.

During her research, Jannysse came across this article in the 1934 *Woodend Star*. Here follows a section of the article which we found quite fascinating. (The full article will be included in the September "Heritage News").

"A WOODEND CENTENARIAN"

We learn that our much respected resident, Mrs. Elizabeth O'Connor, attained her 100th birthday on the 24th December. Arriving in Australia in March 1862, she came to Woodend by train, and thence by coach proceeded to Kyneton to join her sister who had a drapery business there. The coach left the old Woodend Hotel at 9 o'clock at night. The Hotel stood on the site of the present Campaspe Motor Garage (Now Bourkie's Bakehouse) A short distance over the Woodend bridge the coach passed what was then called "Canvas Town", on the slopes of the old racecourse, now the golf links, and the numerous tents there, lit up with candles, the illuminant of those days, gave to her the impression that the scene was a gypsy camp. She remembers that other passengers in the coach laughed at her as a "new chum", when she remarked that "there seemed to be a lot of gypsies at this place"

Leaving Kyneton for the diggings at Garlick's Lead near Trentham, Mrs. O'Connor's sister opened a general store there. She came to Woodend in 1865 with her sister and resided here for some time then entered into business with her two daughters at Drummond St. Carlton in 1888. Her only son was killed at Gallopoli in 1915, and after his death she came back to Woodend where, it is very pleasing to say, she is still able to take an interest in daily affairs and relate to her friends informative and entertaining reminiscences over her period of exceptional longevity."

W&DHS publications are available from the Woodend Court House on Wednesdays. Our most recent publications "They Went to War" and "The Walkers" are also available from Collier Office & Business Assist.

Submitted by Janet Hawkins.

SPORTS NEWS

Macedon Ranges Touch Football

Summer Season 2013

Macedon Ranges Shire Council's leisure team is accepting enrolments for the Macedon Ranges touch football summer season, and offering free 'come and try' sessions on Tuesday 1st and 8th October.



Touch football is similar to rugby-league, but removes the element of tackling and dangerous physical contact. It is a fast flowing game, and extremely easy to learn. It's great for fitness and is a fun social sport for men, women and children of all ages. Teams and individual players of all abilities accepted in either our A or B grade competitions.

We also run a fantastic junior development program for children and teens aged 6–16 years. Our amazing team of coaches have played and coached at state level and will provide your children with fantastic training. Our head coach Chris Pain is the current Victorian Under 15 boys coach, and has developed many of our junior players to Victorian teams over the past seven years.

Meeting at Dixon Field Reserve, Gisborne on Tuesday nights, competitions for Senior Mixed A & B Grade and Junior Coaching for 6–16 year olds.

Come and try sessions will be hosted on Tuesday 1 and 8 of October, Juniors at 5pm–6pm and Seniors at 6pm–7pm

Competitions start on Tuesday 15 October. Our 8 week junior coaching program will start on Tuesday 22 October.

Registrations for all programs are due on Tuesday 8 October. For more information contact Megan Lorkin on 5428 7155 or email touchfootball@mrsc.vic.gov.au.

Submitted by G Gamble for MRSC

HOME MAINTENANCE

Home & Property Maintenance

• No Job Too Small •

Call now for a Quote

Handyman • Prepare for Sale
Renovations • Extensions

P: 0411 555 925

E: baiame1@optusnet.com.au

MASSAGE

MASSAGE ON HIGH

All massages are charged at \$1 per min plus \$5

• gift vouchers available •

Remedial • Relaxation • Pregnancy • Lymphatic drainage • Thai foot massage

30 High St Kyneton 5422 2511

Open 7 days a week

75 High St Woodend (Westpac Building) 0467 250 747

Tuesday to Saturday

10min Neck & Shoulder \$10

20min Foot Massage \$20

members of AAMT

PAINTING



Aardvark Painting

ABN: 49 178 405 936

- All Painting Works
- Associated Repairs
- Discounts Available
- Call for a Free Quote

0488 094 186 / 0488 095 186

Email: staff@apainting.com.au
Internet: http://www.apainting.com.au

PAINTING

Call Steven
0402 079 482

PAINTING

Painting & decorating

Residential & commercial

Rendering

Prompt & professional

Rigoni Painting

Phone 0430 371 001



TRADE & SERVICE DIRECTORY

CARPENTRY

Paul Gaskin
Qualified Carpenter
0438 440 986

Decks, Pergolas
Bathrooms, Renovations
& all your carpentry needs,
throughout the
Macedon Ranges
Free quotes



paulgaskin12@yahoo.com.au

CHIROPRACTOR

Mark Brown
30 years experience

- Muscle realign & stretch techniques
- Gentle spine adjustments
- Elbows, wrists, kness, shoulders
- Headaches, migraines & athsma

Upstairs at Westpac Bank, 75 High St

Phone: 0407 526 403

CLEANING



Not enough hours in your day?
Need help managing
your home?

Stephen Farrell
Personal Services

Very reasonable rates
Through out the Macedon Ranges
Phone 0419 526 275



CONCRETING

Brown's Concreting

- ✓ Driveways
- ✓ Paths
- ✓ House & Shed Slabs
- ✓ Extensions

Luke Brown 0458 919 198

DRESSMAKER

Beryl's Tailoring

DRESSMAKING, ALTERATIONS,
BRIDAL, EVENING & DAY WEAR,
LADIES AND MEN'S REPAIRS

Beryl Bachelor
QUALIFIED DRESSMAKER, NEWHAM
BY APPOINTMENT ONLY
MON TO FRI 9-5

5427 0568 0418 510 179
berylb@vic.chariot.net.au



FENCING & GATES

Fencing & Gates

- colourbond
- timber
- picket steel & timber
- period style fencing
- all types of gates
- retaining walls

ph: 0419 005 185 5427 1192

HANDY MAN

HANDYMAN SERVICE

Servicing the Macedon Ranges
Honest Reliable Friendly & Local

Phone **PETER**

0431 252 477 or 5423 5282

Minor repairs	Dripping Taps
Basic Carpentry	Tiling
Fence repairs	Paving
Gardening	Painting
Mowing	Odd Jobs



HOME INTERIORS

DECORATE
with style
RENOVATE
TRANSFORM
with confidence



Present Well
HOME INTERIORS

Call Danielle 0400 664 231 pwhi.com.au

HOME MAINTENANCE

Home maintenance & landscaping
service including decking,
pergolas, carpentry & painting.

Stuart 0409 150 629

AH 5427 2465

METAL GATES



BVM METALCRAFT
Ben McKee
GATE AUTOMATION
OLDWORLD & MODERN STYLE
GATES AND FENCING
bvmmetalcraft.com.au
ben@bvmmetalcraft.com.au
04 222 88 768

MOVING & TRANSPORT

To / The
From / In
Macedon
Ranges

Mini Van Man

0408 190 728

If your job is too small for a truck & too big for a car...
Ring the Mini Van Man

Removal & Courier Service

TILING

TAPPIN TILING

For all types of floor and wall tiling
including natural stone, indoor and outdoor

Quality workmanship and reliability

Servicing the Macedon Ranges & beyond

Call Grant for a free quote now - 0450 234 255

STONELAYING & PAVING

DUNN

Stonemason & Paver
specialising in

- Retaining Walls
- Drystone Walls
- Stone Houses
- Paving
- Over 20 years' experience

Cameron Dunn
P 5427 4778
M 0429 162 589

www.cdunnstone.com.au

TAXI

**CROWN
CABS**
Your Local Taxi Service

Bookings: 9310 5422

To go in a monthly draw for a \$20 voucher
to spend next time you ride with Crown Cabs,
Send this advert to:

P.O. Box 25 Tullamarine, 3043.

TREE SERVICES



A&P Tree Services

- tree pruning / removal • stump removal
- tree planting / transplanting • rope & harness climbing
- confined space removal • fully insured

Professional commercial & residential tree maintenance
all work carried out by qualified arborist

Call Anthony **0417 059 969**

Woodend Wine Store

Presents it's annual

GRAND TASTING

Saturday October 12th 1pm—5pm

At the Bentinck, 8 Carlisle St, Woodend

Come and spend the afternoon tasting over 200 different beers, wines, ciders and selected spirits

*All pre purchased tickets go into the draw to win a mixed dozen and other prizes

*Complementary afternoon tea

*Discounts for ordering on the day

*Live music by Sarah Willkinson

Tickets \$22 pre purchased at Wine Store
\$25 on the day

Monday to Thursday 10am - 7 pm

Friday and Saturday 10am—8pm

Sunday & Public Holidays 11am – 6pm

42e Anslow Street, Woodend. 03 5427 2228

caz@woodendwinestore.com.au

www.woodendwinestore.com.au/latestnews

Persons under 18 not admitted